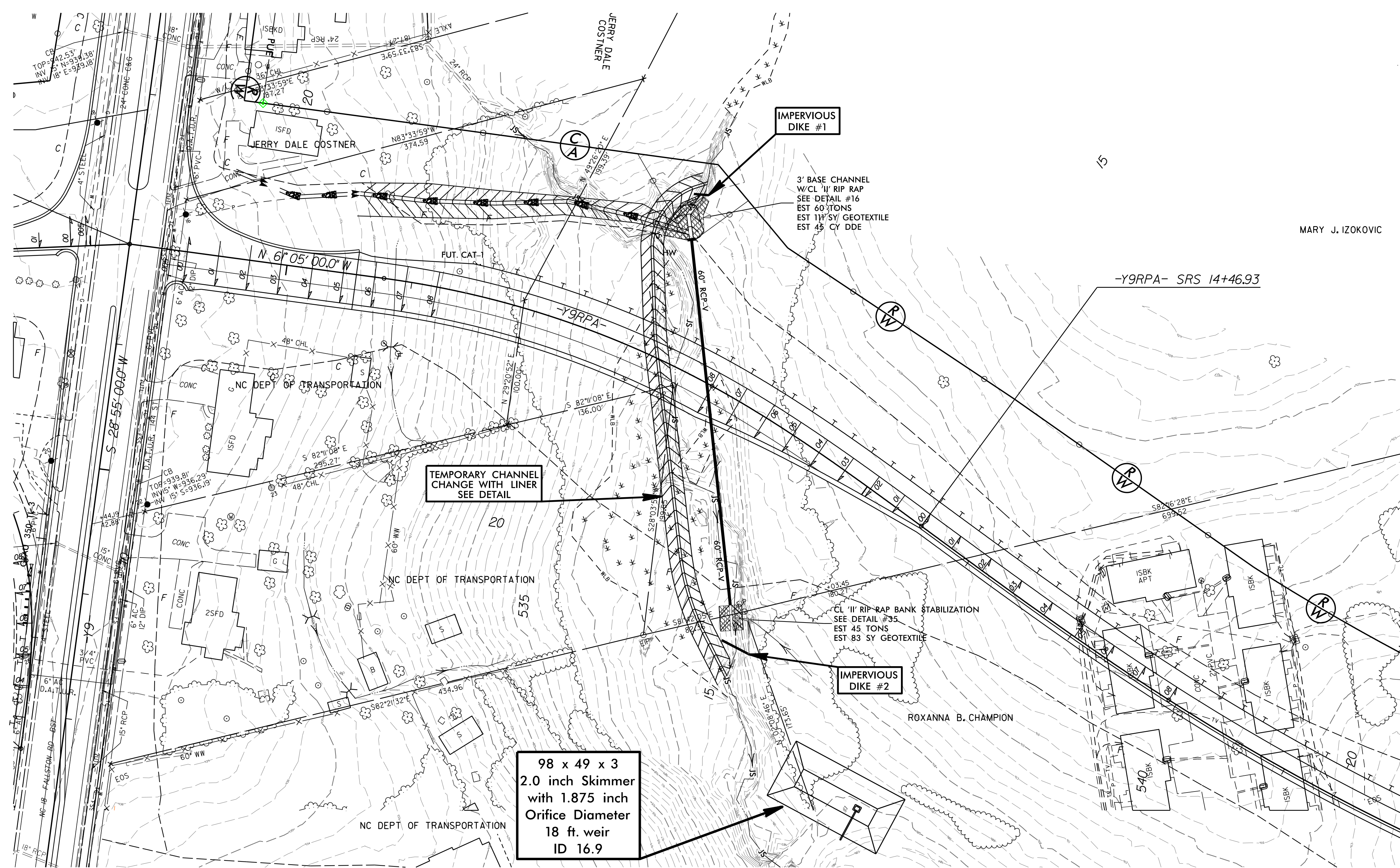


# 60" RCP CONSTRUCTION SEQUENCE STA. 16+52 -Y9RPA- UT TO HICKORY CREEK

PROJECT REFERENCE NO. R-2707C	SHEET NO. EC-16B/CONST.16
RW SHEET NO.	
ROADWAY DESIGN ENGINEER	HYDRAULICS ENGINEER

- 1.) CONSTRUCT SKIMMER BASIN 16.9.
- 2.) CONSTRUCT TEMPORARY CHANNEL CHANGE WITH LINER (SEE DETAIL).
- 3.) INSTALL IMPERVIOUS DIKES #1 AND #2 AND DIVERT FLOW INTO TEMPORARY CHANNEL.
- 4.) DEWATER CONSTRUCTION AREA, UTILIZING SKIMMER BASIN 16.9 FOR PUMPED EFFLUENT.
- 5.) INSTALL 60" RCP W/HEADWALL, UPSTREAM CHANNEL AND DOWNSTREAM BANK STABILIZATION IN ACCORDANCE WITH THE PLANS.
- 6.) REMOVE IMPERVIOUS DIKES #1, #2 AND TEMPORARY CHANNEL AND DIRECT FLOW THROUGH 60" RCP.
- 7.) COMPLETE ROADWAY.



98 x 49 x 3  
2.0 inch Skimmer  
with 1.875 inch  
Orifice Diameter  
18 ft. weir  
ID 16.9

