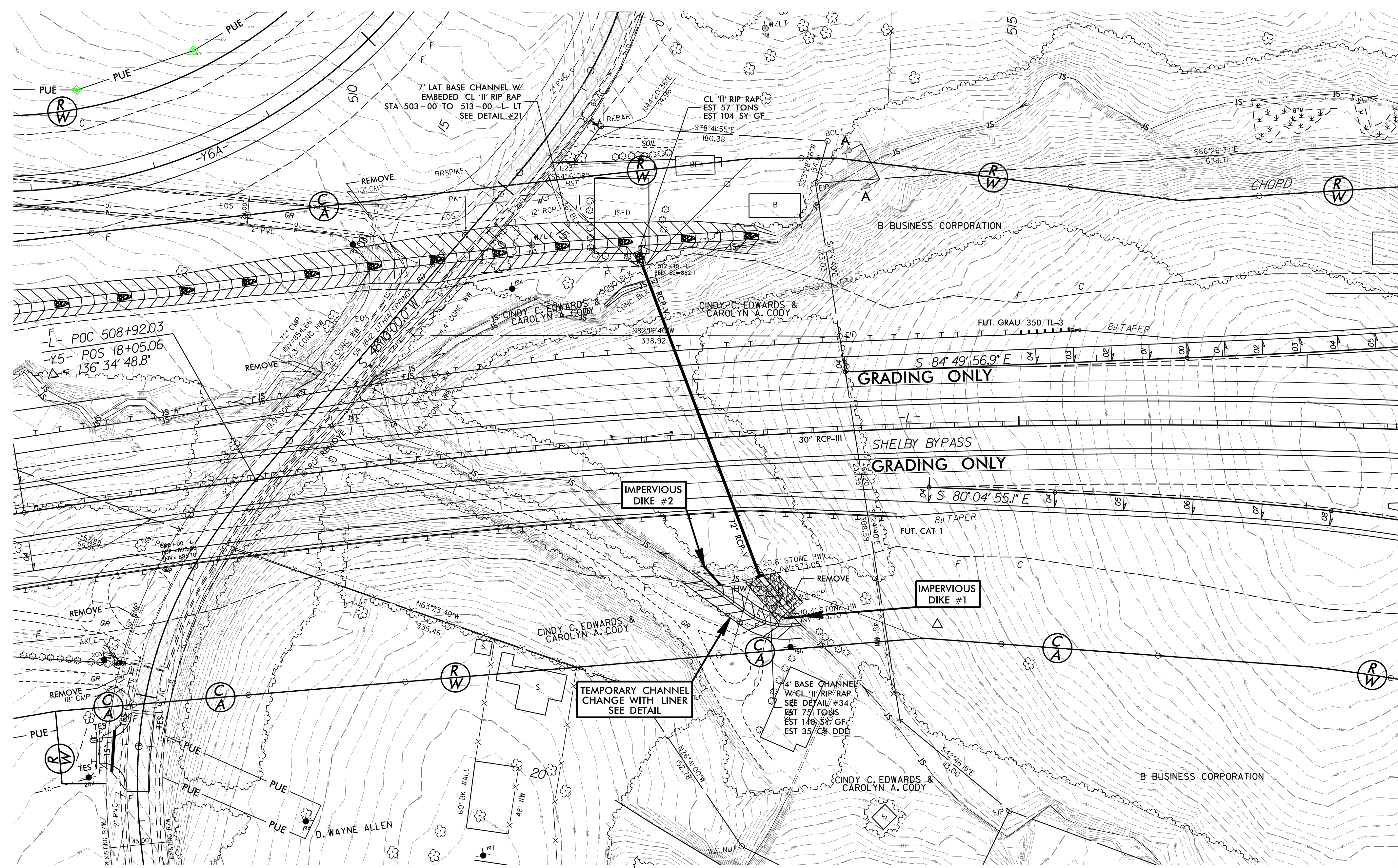


# 72" RCP CONSTRUCTION SEQUENCE STA. 512+52 -L- UT TO WILLIAMS CREEK

PROJECT REFERENCE NO. R-2707C	SHEET NO. EC-15A/CONST.15
RW SHEET NO.	
ROADWAY DESIGN ENGINEER	HYDRAULICS ENGINEER

- 1.) CONSTRUCT 7' LATERAL BASE CHANNEL FROM STA. 503+00 TO 513+00 -L- RT.
- 2.) CONSTRUCT TEMPORARY CHANNEL CHANGE WITH LINER (SEE DETAIL).
- 3.) INSTALL IMPERVIOUS DIKES #1 AND #2 AND DIVERT FLOW INTO TEMPORARY CHANNEL.
- 4.) DEWATER CONSTRUCTION AREA, UTILIZING SPECIAL STILLING BASIN(S) FOR PUMPED EFFLUENT.
- 5.) INSTALL 72" RCP W/HEADWALL AND INLET CHANNEL IN ACCORDANCE WITH THE PLANS.
- 6.) REMOVE IMPERVIOUS DIKES #1, #2 AND TEMPORARY CHANNEL AND DIRECT FLOW THROUGH 72" RCP.
- 7.) COMPLETE ROADWAY.



NAD 83/95

