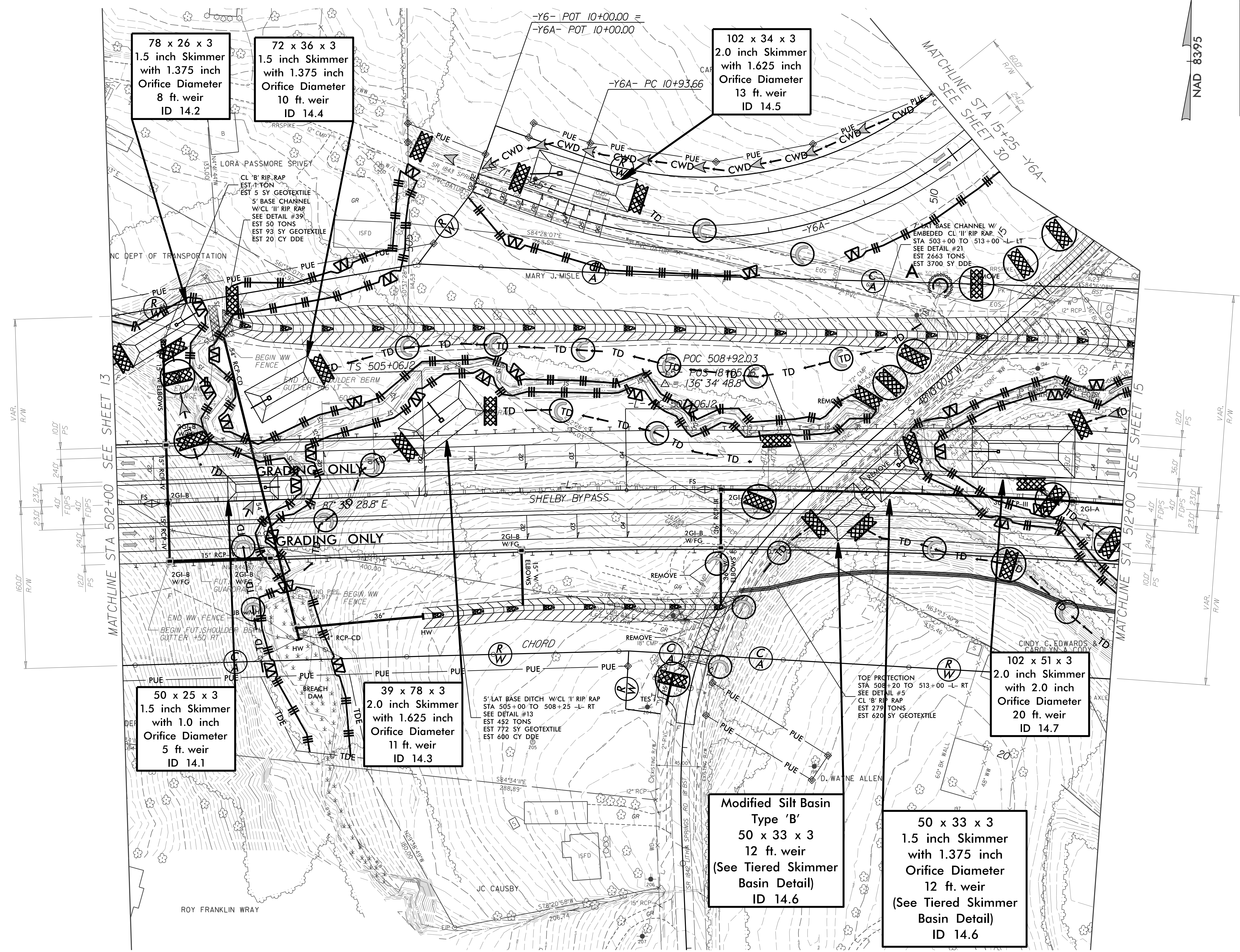
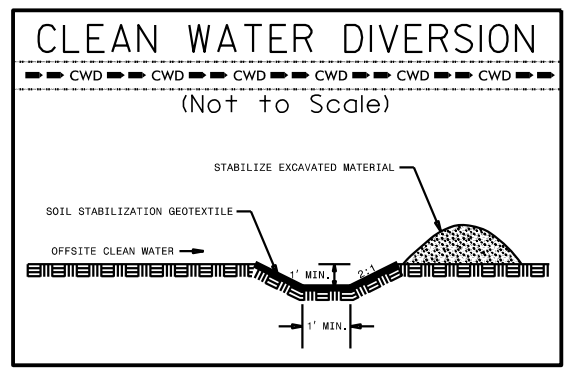


PROJECT REFERENCE NO.	SHEET NO.
R-2707C	EC-14/CONST J4
RW SHEET NO.	
ROADWAY DESIGN ENGINEER	HYDRAULICS ENGINEER

CLEARING AND GRUBBING  
EROSION CONTROL FOR  
CONSTRUCTION SHEET 14



78 x 26 x 3  
1.5 inch Skimmer  
with 1.375 inch  
Orifice Diameter  
8 ft. weir  
ID 14.2

72 x 36 x 3  
1.5 inch Skimmer  
with 1.375 inch  
Orifice Diameter  
10 ft. weir  
ID 14.4

102 x 34 x 3  
2.0 inch Skimmer  
with 1.625 inch  
Orifice Diameter  
13 ft. weir  
ID 14.5

50 x 25 x 3  
1.5 inch Skimmer  
with 1.0 inch  
Orifice Diameter  
5 ft. weir  
ID 14.1

39 x 78 x 3  
2.0 inch Skimmer  
with 1.625 inch  
Orifice Diameter  
11 ft. weir  
ID 14.3

102 x 51 x 3  
2.0 inch Skimmer  
with 2.0 inch  
Orifice Diameter  
20 ft. weir  
ID 14.7

Modified Silt Basin  
Type 'B'  
50 x 33 x 3  
12 ft. weir  
(See Tiered Skimmer  
Basin Detail)  
ID 14.6

50 x 33 x 3  
1.5 inch Skimmer  
with 1.375 inch  
Orifice Diameter  
12 ft. weir  
(See Tiered Skimmer  
Basin Detail)  
ID 14.6

NOTE:  
PLACE TEMPORARY ROCK SEDIMENT DAMS TYPE - B  
AND TEMPORARY ROCK SILT CHECKS TYPE - A AT  
DRAINAGE OUTLETS.

INSTALL PIPE(S) IN JURISDICTIONAL AREAS WITHOUT IMPACTING STREAM UNTIL  
AREA STABILIZED AND ACCORDING TO NCDOT BEST MANAGEMENT  
PRACTICES FOR CONSTRUCTION AND MAINTENANCE ACTIVITIES MANUAL.

FOR DITCH DETAILS SEE SHEET 2D-1  
FOR PFSH DETAILS SEE SHEET 2D-2  
FOR -L- PROFILE SEE SHEET 48  
FOR -Y6A- PROFILE SEE SHEET 58