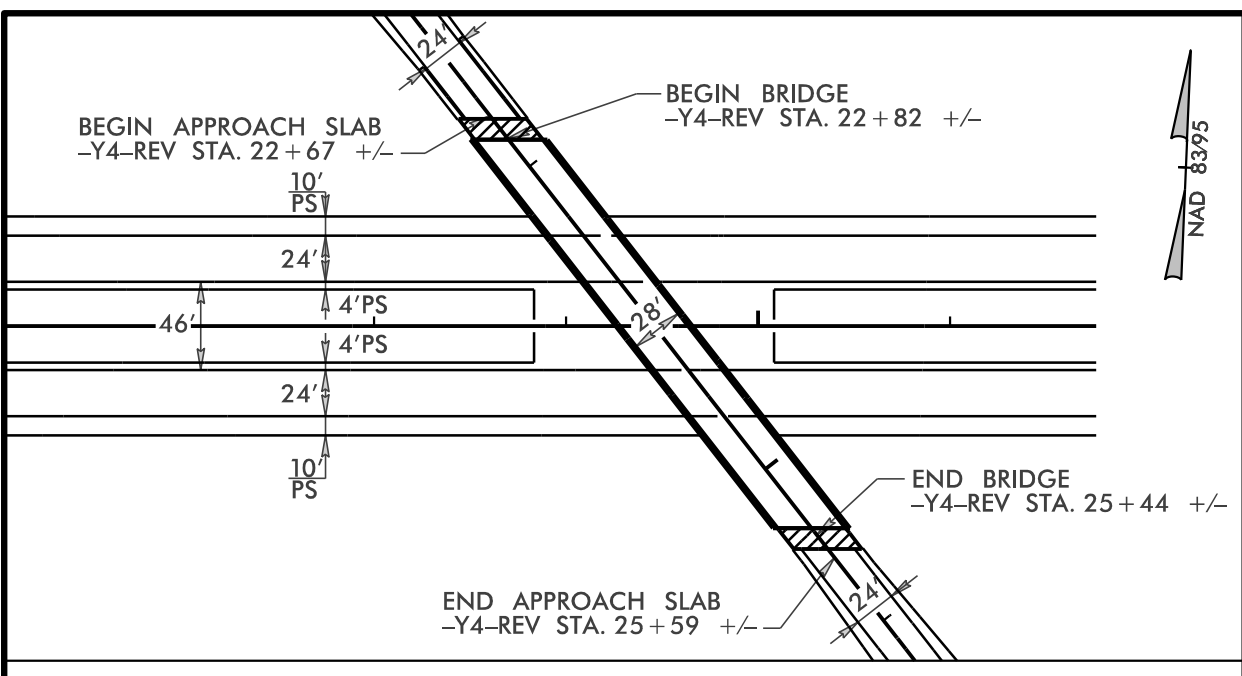
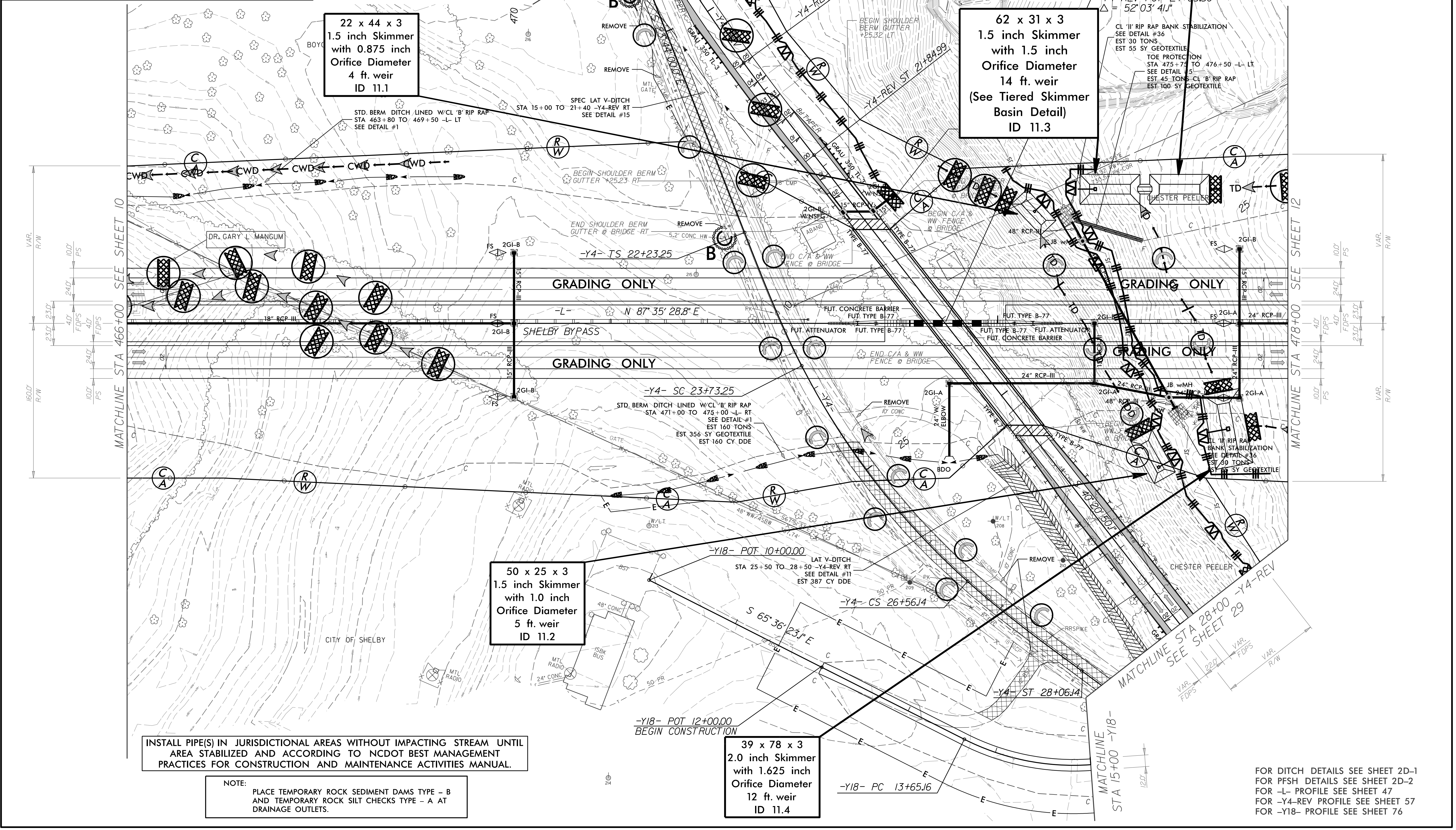
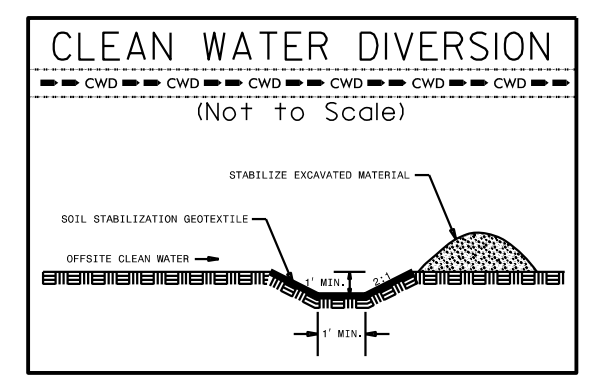


PROJECT REFERENCE NO.	SHEET NO.
R-2707C	EC-II/CONST.II
RW SHEET NO.	
ROADWAY DESIGN ENGINEER	HYDRAULICS ENGINEER

CLEARING AND GRUBBING EROSION CONTROL FOR CONSTRUCTION SHEET 11



SKETCH SHOWING BRIDGE RELATIVE TO PROPOSED PAVEMENT



22 x 44 x 3
1.5 inch Skimmer
with 0.875 inch
Orifice Diameter
4 ft. weir
ID 11.1

62 x 31 x 3
1.5 inch Skimmer
with 1.5 inch
Orifice Diameter
14 ft. weir
(See Tiered Skimmer
Basin Detail)
ID 11.3

Modified Silt Basin
Type 'B'
62 x 31 x 3
14 ft. weir
(See Tiered Skimmer
Basin Detail)
ID 11.3

50 x 25 x 3
1.5 inch Skimmer
with 1.0 inch
Orifice Diameter
5 ft. weir
ID 11.2

39 x 78 x 3
2.0 inch Skimmer
with 1.625 inch
Orifice Diameter
12 ft. weir
ID 11.4

INSTALL PIPE(S) IN JURISDICTIONAL AREAS WITHOUT IMPACTING STREAM UNTIL AREA STABILIZED AND ACCORDING TO NCDOT BEST MANAGEMENT PRACTICES FOR CONSTRUCTION AND MAINTENANCE ACTIVITIES MANUAL.

NOTE: PLACE TEMPORARY ROCK SEDIMENT DAMS TYPE - B AND TEMPORARY ROCK SILT CHECKS TYPE - A AT DRAINAGE OUTLETS.

FOR DITCH DETAILS SEE SHEET 2D-1
FOR PFSH DETAILS SEE SHEET 2D-2
FOR -L- PROFILE SEE SHEET 47
FOR -Y4-REV PROFILE SEE SHEET 57
FOR -Y18- PROFILE SEE SHEET 76