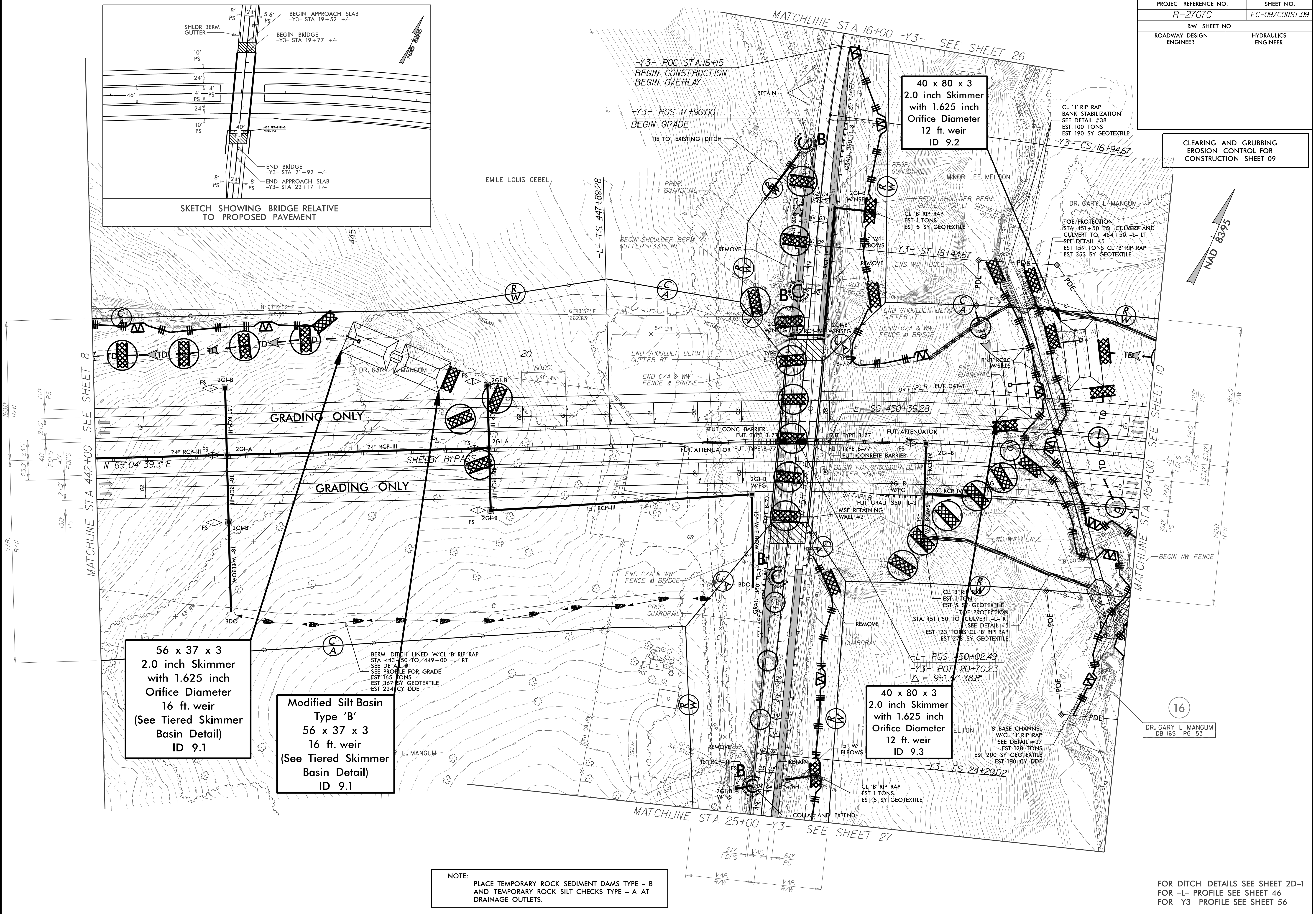
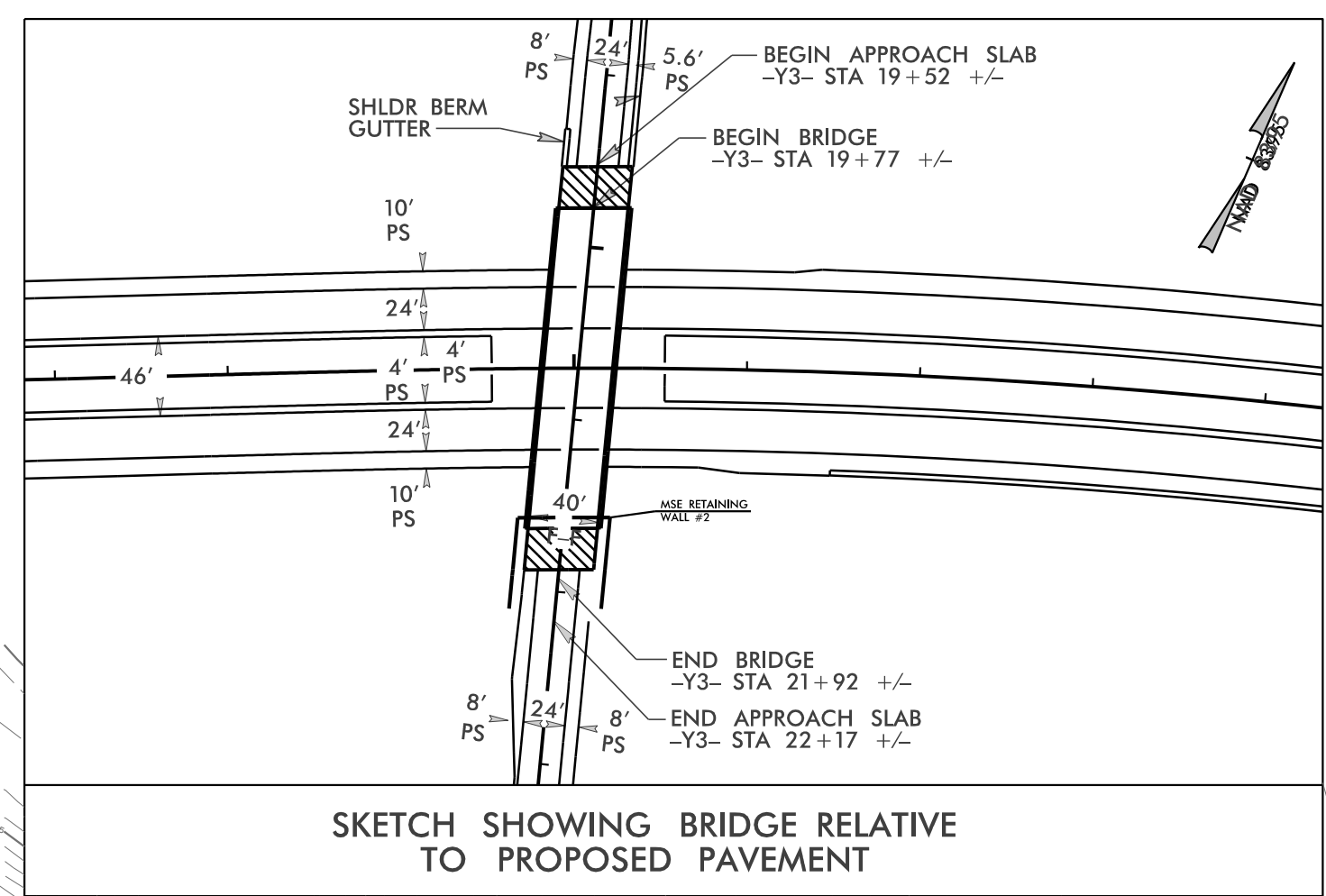


PROJECT REFERENCE NO.	SHEET NO.
R-2707C	EC-09/CONST.09
RW SHEET NO.	
ROADWAY DESIGN ENGINEER	HYDRAULICS ENGINEER

CLEARING AND GRUBBING EROSION CONTROL FOR CONSTRUCTION SHEET 09



56 x 37 x 3  
2.0 inch Skimmer  
with 1.625 inch  
Orifice Diameter  
16 ft. weir  
(See Tiered Skimmer  
Basin Detail)  
ID 9.1

Modified Silt Basin  
Type 'B'  
56 x 37 x 3  
16 ft. weir  
(See Tiered Skimmer  
Basin Detail)  
ID 9.1

40 x 80 x 3  
2.0 inch Skimmer  
with 1.625 inch  
Orifice Diameter  
12 ft. weir  
ID 9.3

40 x 80 x 3  
2.0 inch Skimmer  
with 1.625 inch  
Orifice Diameter  
12 ft. weir  
ID 9.2

NOTE: PLACE TEMPORARY ROCK SEDIMENT DAMS TYPE - B AND TEMPORARY ROCK SILT CHECKS TYPE - A AT DRAINAGE OUTLETS.

16  
DR. GARY L. MANGUM  
DB 165 PG 153

FOR DITCH DETAILS SEE SHEET 2D-1  
FOR -L- PROFILE SEE SHEET 46  
FOR -Y3- PROFILE SEE SHEET 56