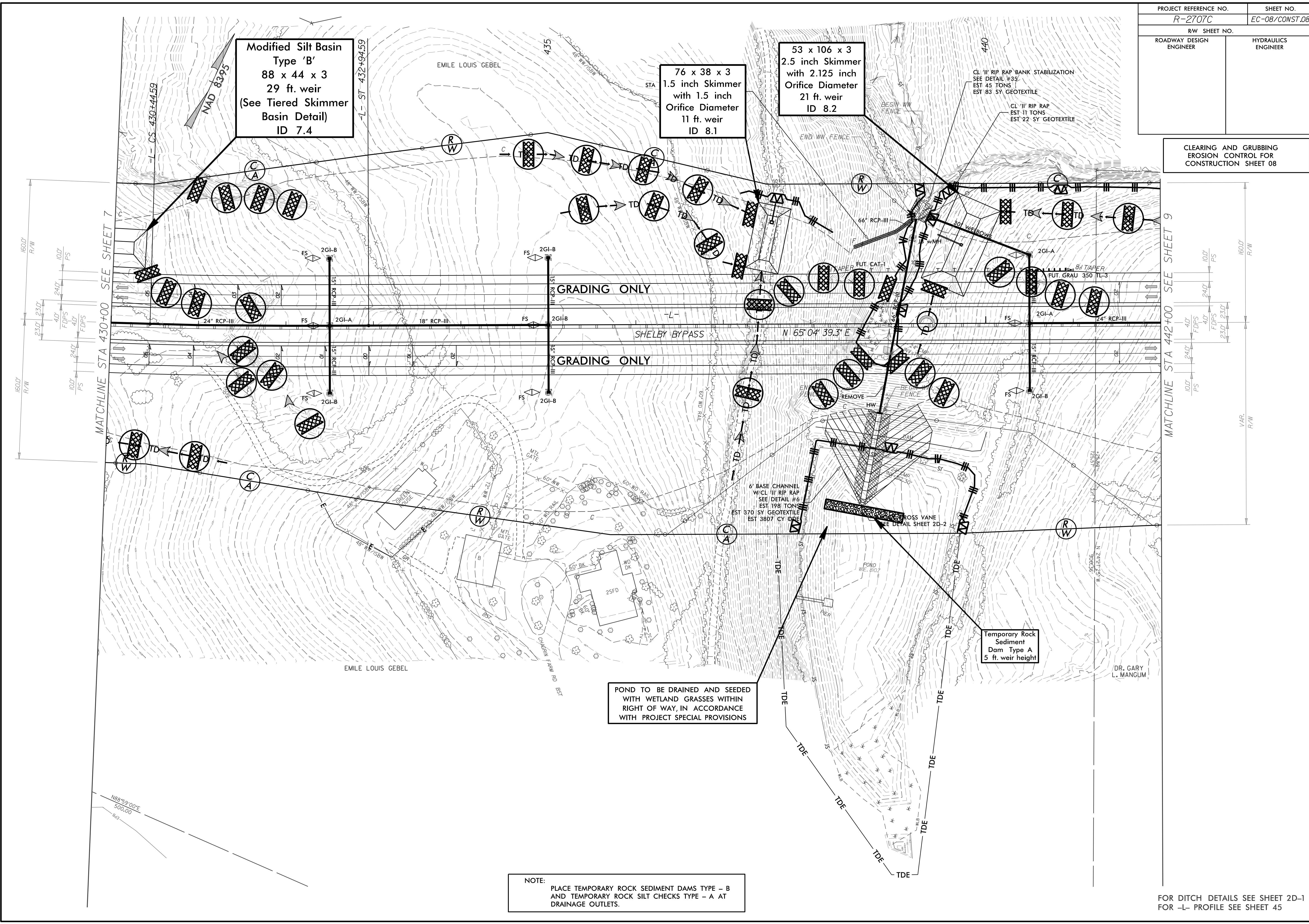


PROJECT REFERENCE NO.	SHEET NO.
R-2707C	EC-08/CONST.08
RW SHEET NO.	
ROADWAY DESIGN ENGINEER	HYDRAULICS ENGINEER

CLEARING AND GRUBBING
EROSION CONTROL FOR
CONSTRUCTION SHEET 08



Modified Silt Basin
Type 'B'
88 x 44 x 3
29 ft. weir
(See Tiered Skimmer
Basin Detail)
ID 7.4

76 x 38 x 3
1.5 inch Skimmer
with 1.5 inch
Orifice Diameter
11 ft. weir
ID 8.1

53 x 106 x 3
2.5 inch Skimmer
with 2.125 inch
Orifice Diameter
21 ft. weir
ID 8.2

Temporary Rock
Sediment
Dam Type A
5 ft. weir height

POND TO BE DRAINED AND SEEDED
WITH WETLAND GRASSES WITHIN
RIGHT OF WAY, IN ACCORDANCE
WITH PROJECT SPECIAL PROVISIONS

NOTE:
PLACE TEMPORARY ROCK SEDIMENT DAMS - B
AND TEMPORARY ROCK SILT CHECKS TYPE - A AT
DRAINAGE OUTLETS.

FOR DITCH DETAILS SEE SHEET 2D-1
FOR -L- PROFILE SEE SHEET 45

DR. GARY
L. MANGUM