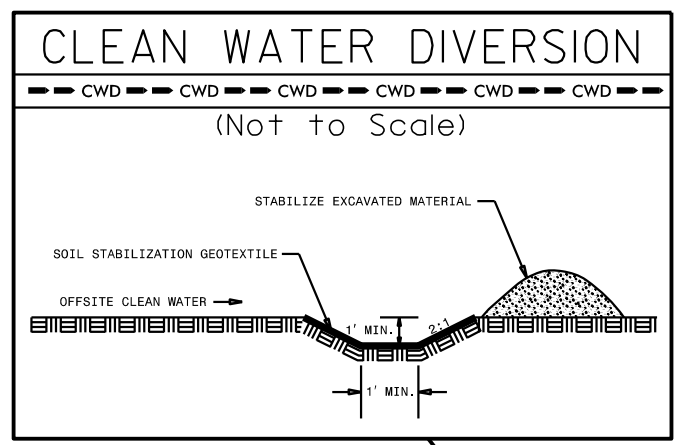


PROJECT REFERENCE NO.	SHEET NO.
R-2707C	EC-07/CONST.07
RW SHEET NO.	
ROADWAY DESIGN ENGINEER	HYDRAULICS ENGINEER

CLEARING AND GRUBBING EROSION CONTROL FOR CONSTRUCTION SHEET 07



NOTE: PLACE TEMPORARY ROCK SEDIMENT DAMS TYPE - B AND TEMPORARY ROCK SILT CHECKS TYPE - A AT DRAINAGE OUTLETS.

SAFETY FENCE ENDANGERED PLANT BOUNDARY

SEE PLAN SHEET 2P FOR ADDITIONAL ROW LIMITS DUE TO ENDANGERED HERITAGE PLANTS

ENVIRONMENTALLY SENSITIVE AREA DO NOT DISTURB

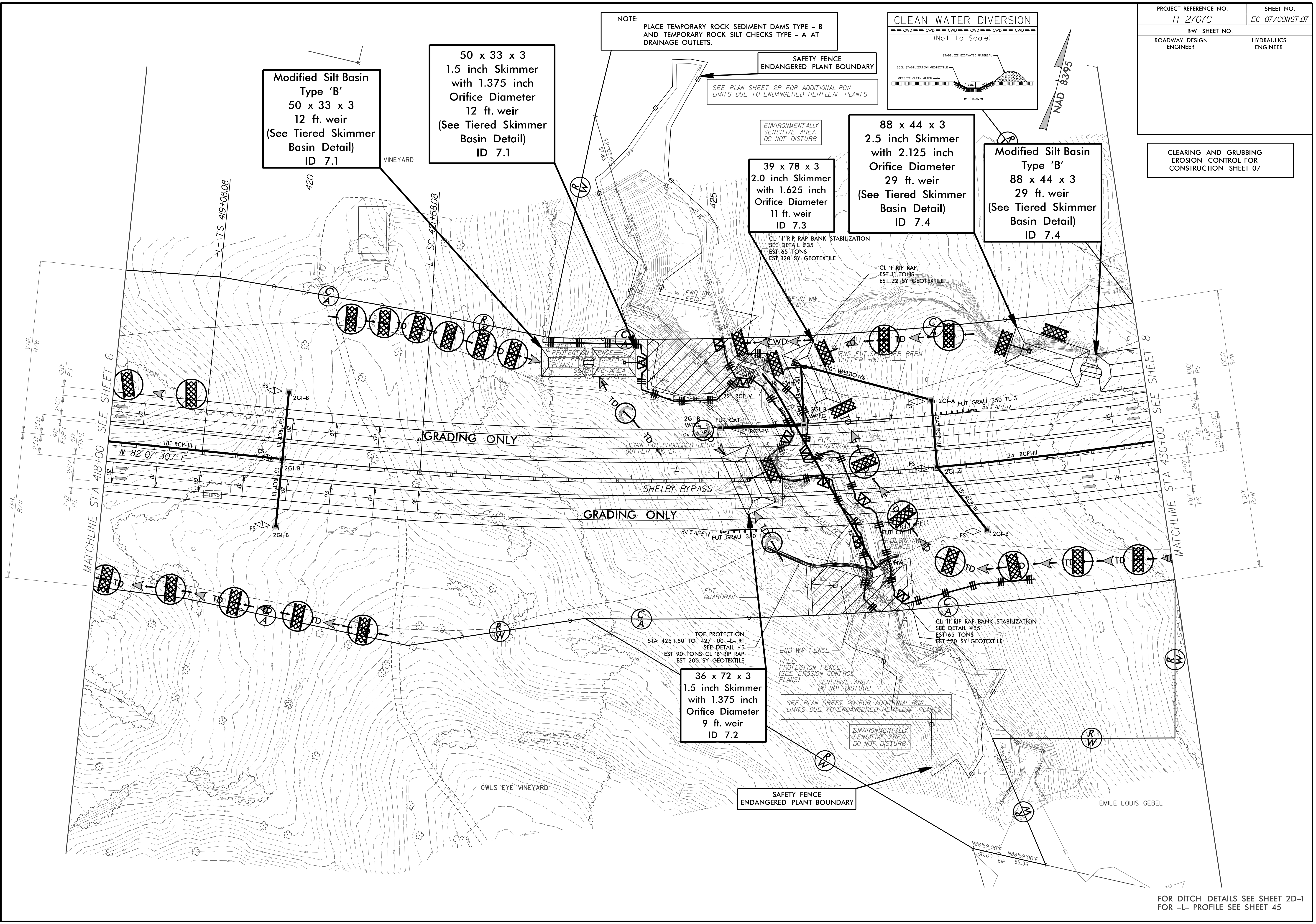
88 x 44 x 3
2.5 inch Skimmer
with 2.125 inch Orifice Diameter
29 ft. weir
(See Tiered Skimmer Basin Detail)
ID 7.4

Modified Silt Basin
Type 'B'
88 x 44 x 3
29 ft. weir
(See Tiered Skimmer Basin Detail)
ID 7.4

39 x 78 x 3
2.0 inch Skimmer
with 1.625 inch Orifice Diameter
11 ft. weir
ID 7.3

50 x 33 x 3
1.5 inch Skimmer
with 1.375 inch Orifice Diameter
12 ft. weir
(See Tiered Skimmer Basin Detail)
ID 7.1

Modified Silt Basin
Type 'B'
50 x 33 x 3
12 ft. weir
(See Tiered Skimmer Basin Detail)
ID 7.1



FOR DITCH DETAILS SEE SHEET 2D-1
FOR -L- PROFILE SEE SHEET 45