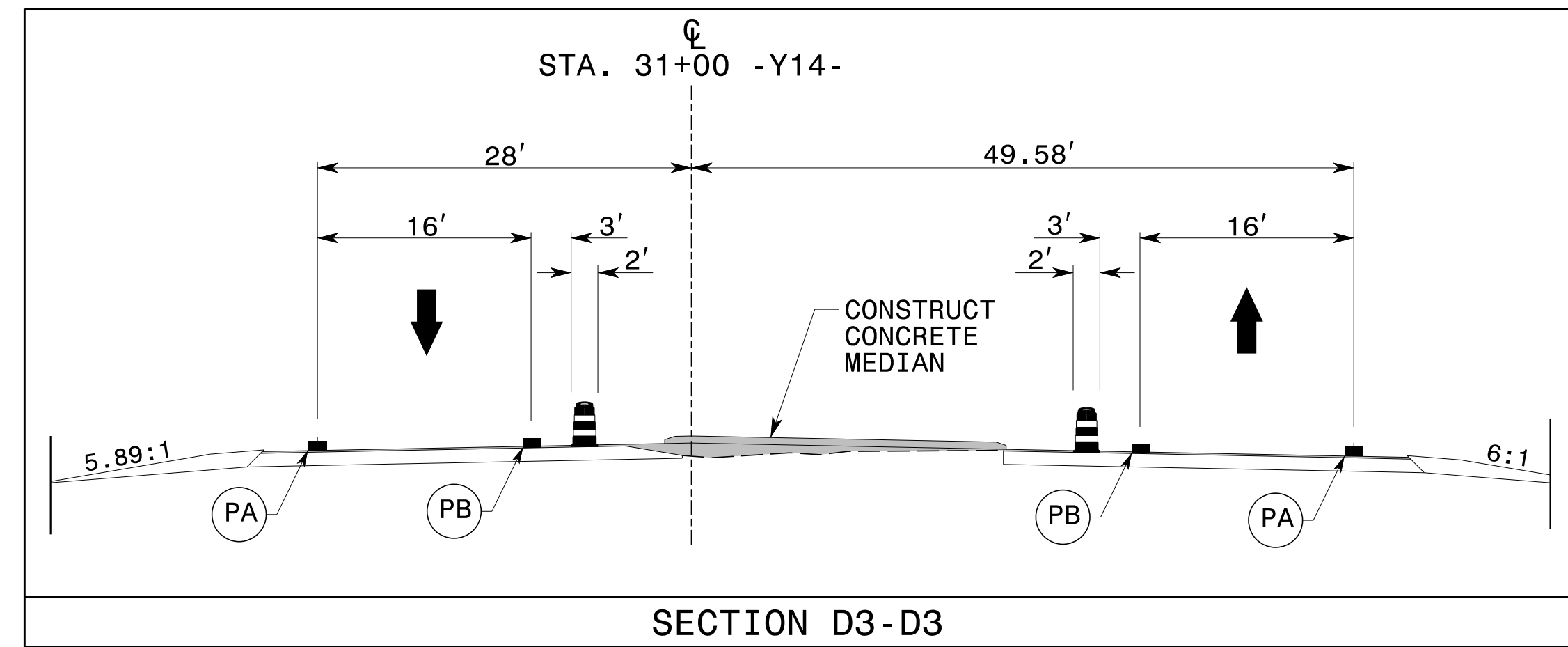
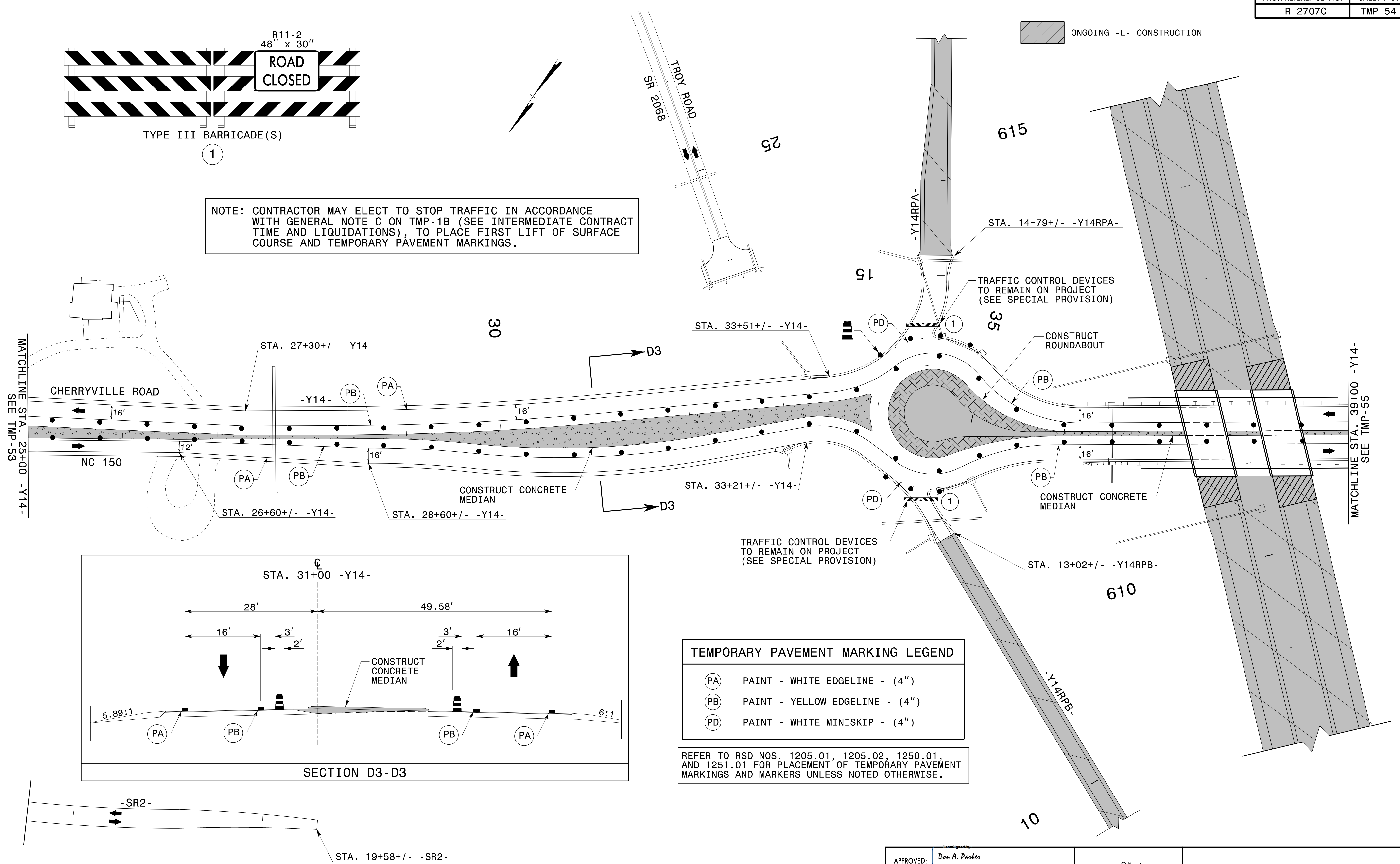


NOTE: CONTRACTOR MAY ELECT TO STOP TRAFFIC IN ACCORDANCE WITH GENERAL NOTE C ON TMP-1B (SEE INTERMEDIATE CONTRACT TIME AND LIQUIDATIONS), TO PLACE FIRST LIFT OF SURFACE COURSE AND TEMPORARY PAVEMENT MARKINGS.



TEMPORARY PAVEMENT MARKING LEGEND	
(PA)	PAINT - WHITE EDGELINE - (4")
(PB)	PAINT - YELLOW EDGELINE - (4")
(PD)	PAINT - WHITE MINISKIP - (4")

REFER TO RSD NOS. 1205.01, 1205.02, 1250.01, AND 1251.01 FOR PLACEMENT OF TEMPORARY PAVEMENT MARKINGS AND MARKERS UNLESS NOTED OTHERWISE.

2/16/2017 P:\TIP\Projects-R\2707C\TrafficControl\TCP\SITE_6\2707C_TC_SITE6_PH3_TMP54.dgn User:scodts

APPROVED: *Don A. Parker*
DATE: 2/16/2017

**DOCUMENT NOT CONSIDERED FINAL
UNLESS ALL SIGNATURES COMPLETED**



**SITE 6
PHASE III DETAILS
CHERRYVILLE ROAD
NC 150
(-Y14- AND -Y15-)**