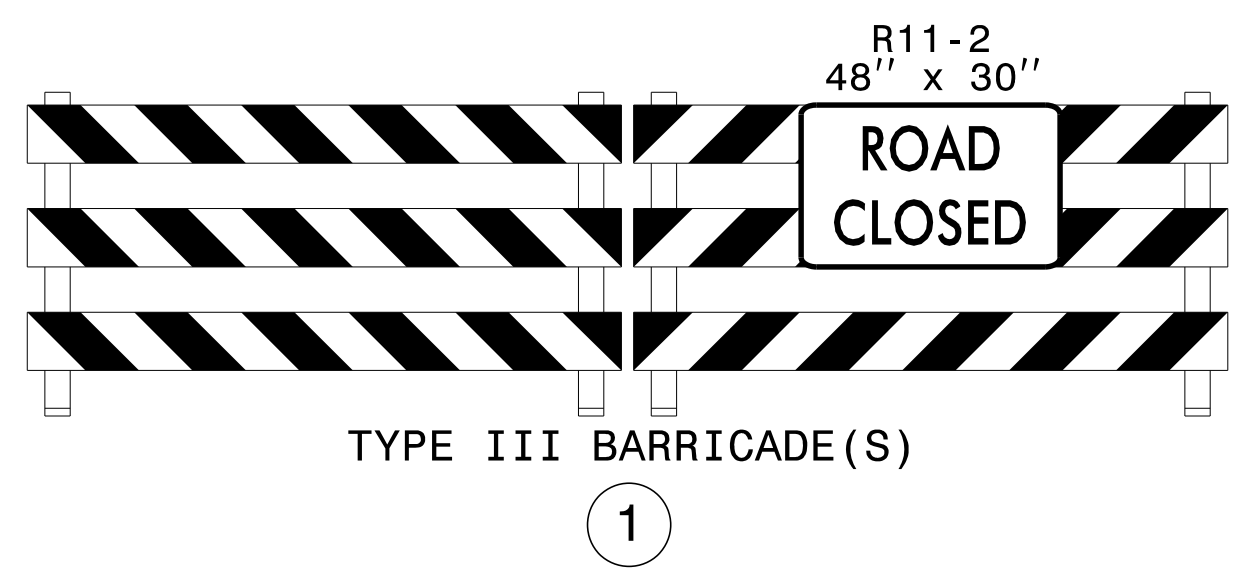


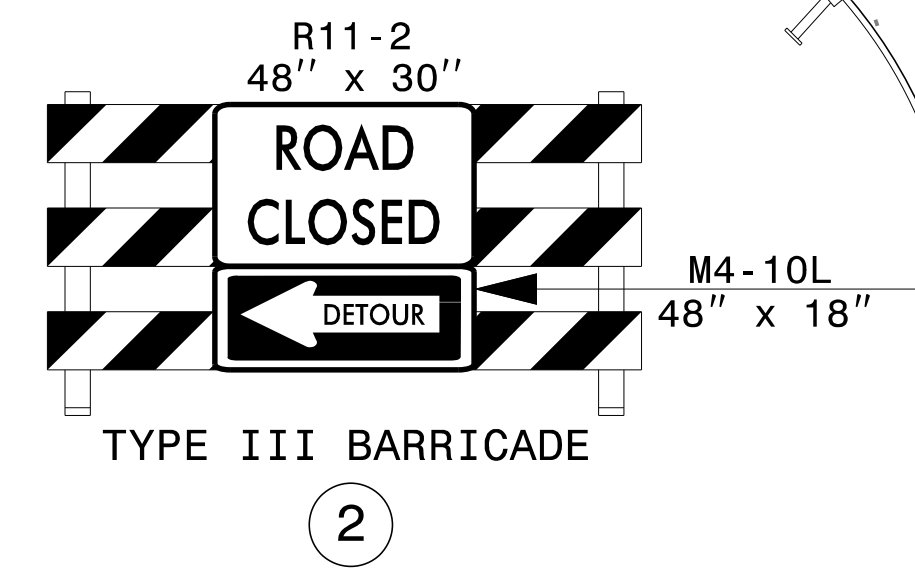
TEMPORARY PAVEMENT MARKING LEGEND	
(PA)	PAINT - WHITE EDGELINE - (4")
(PI)	PAINT - YELLOW DOUBLE CENTER - (4")

REFER TO RSD NOS. 1205.01, 1205.02, 1250.01, AND 1251.01 FOR PLACEMENT OF TEMPORARY PAVEMENT MARKINGS AND MARKERS UNLESS NOTED OTHERWISE.



TYPE III BARRICADE(S)

1



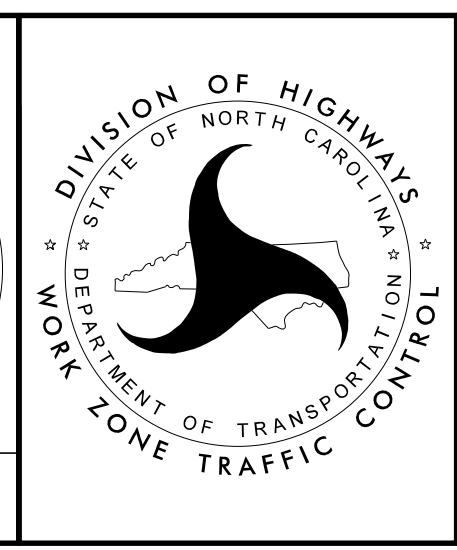
TYPE III BARRICADE

2

APPROVED: *Don A. Parker*
40482862618410...

DATE: 2/16/2017

**DOCUMENT NOT CONSIDERED FINAL
UNLESS ALL SIGNATURES COMPLETED**



**SITE 6
PHASE II DETAILS
NORTH POST ROAD
NC 180
(-Y11-REV2, -Y11A,
-Y11B-, AND -Y14-)**

2/16/2017
 P:\TIP\Projects-R\2707C\TrafficControl\TCP\SITE_6\2707C_TC_SITE6_PH2_TMP52.dgn
 User:scodts