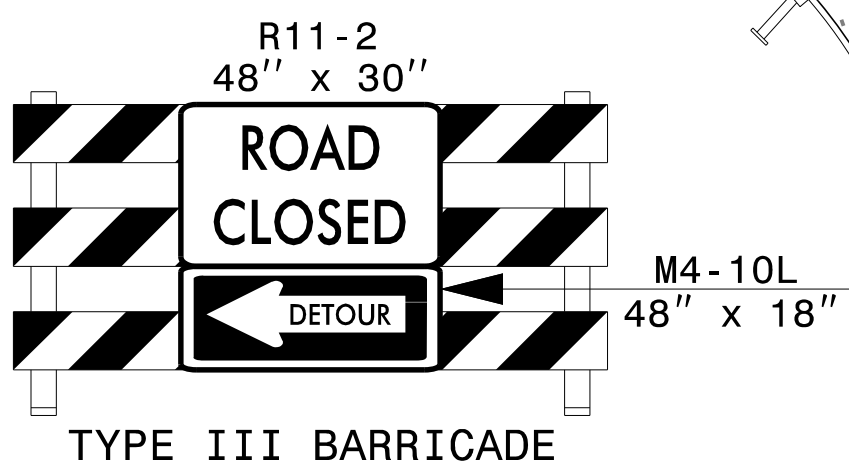
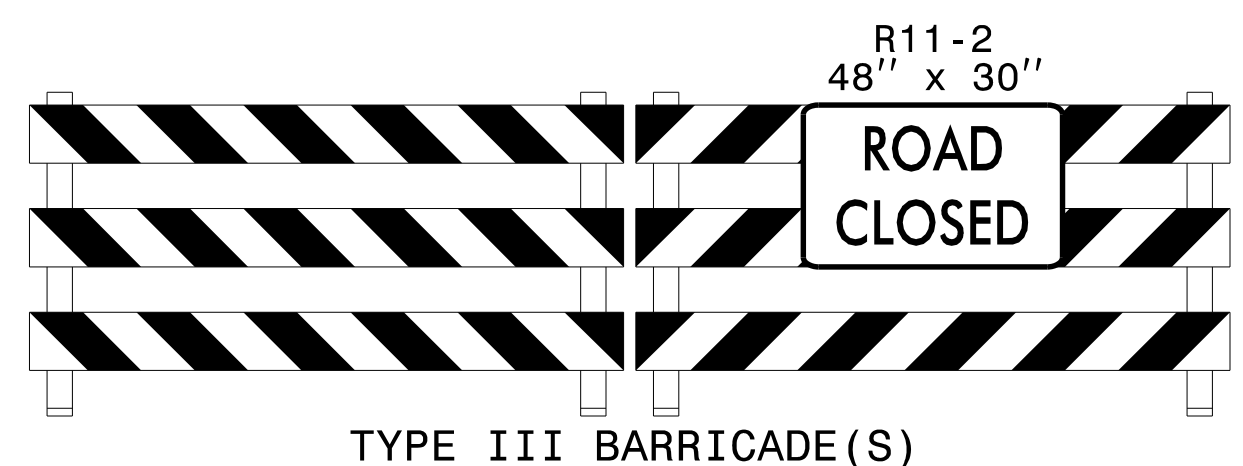
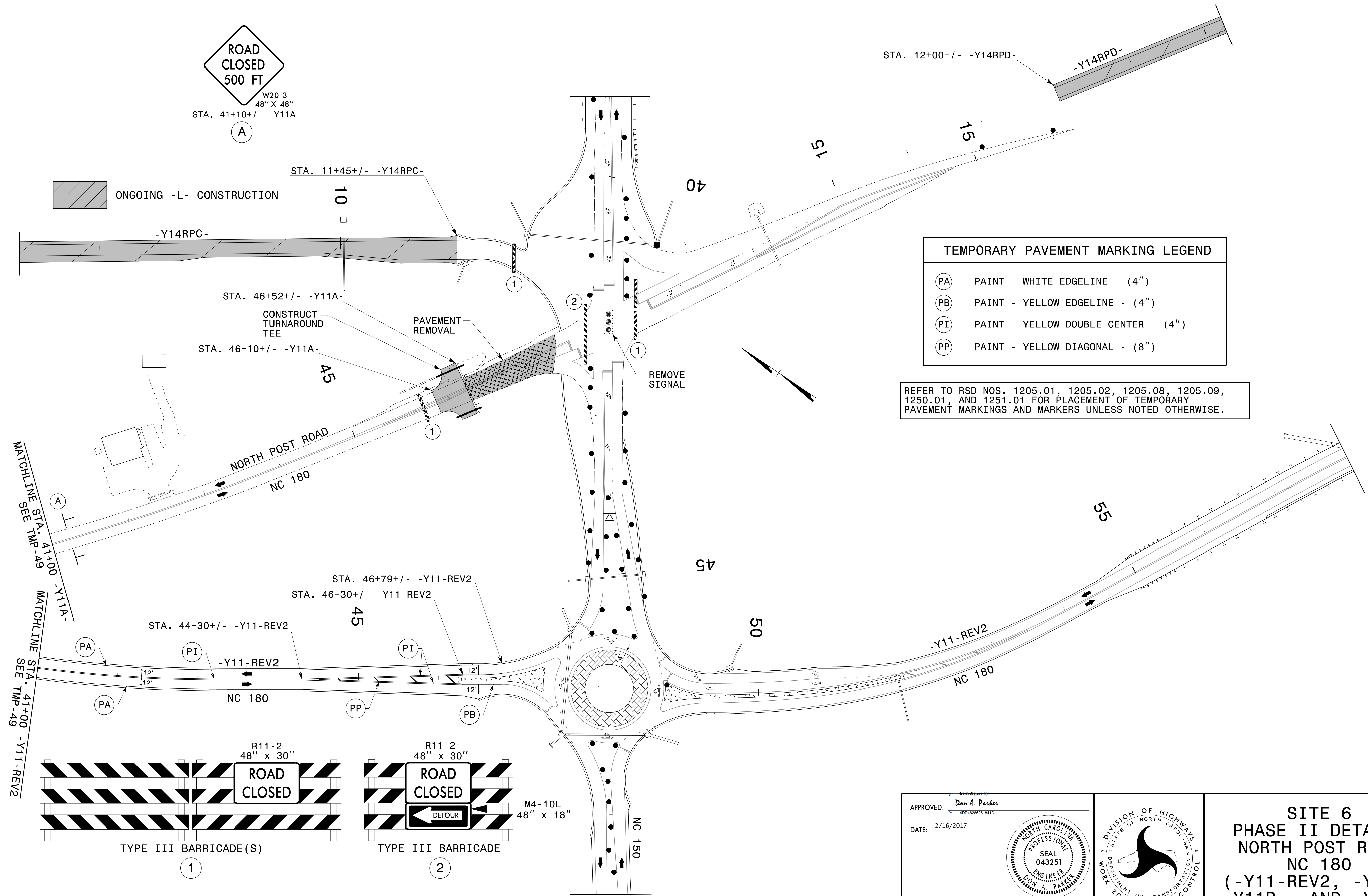


ONGOING -L- CONSTRUCTION

TEMPORARY PAVEMENT MARKING LEGEND	
(PA)	PAINT - WHITE EDGELINE - (4")
(PB)	PAINT - YELLOW EDGELINE - (4")
(PI)	PAINT - YELLOW DOUBLE CENTER - (4")
(PP)	PAINT - YELLOW DIAGONAL - (8")

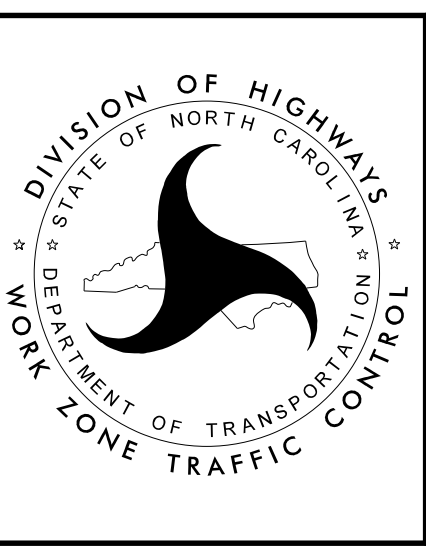
REFER TO RSD NOS. 1205.01, 1205.02, 1205.08, 1205.09, 1250.01, AND 1251.01 FOR PLACEMENT OF TEMPORARY PAVEMENT MARKINGS AND MARKERS UNLESS NOTED OTHERWISE.



APPROVED: *Don A. Parker*  
40042802619410...

DATE: 2/16/2017

**DOCUMENT NOT CONSIDERED FINAL UNLESS ALL SIGNATURES COMPLETED**



**SITE 6**  
**PHASE II DETAILS**  
**NORTH POST ROAD**  
**NC 180**  
 (-Y11-REV2, -Y11A,  
 -Y11B-, AND -Y14-)

2/16/2017  
 P:\TIP\Projects-R\2707C\TrafficControl\TCP\SITE\_6\R2707C\_TC\_SITE6\_PH2\_TMP50.dgn  
 User:scodts