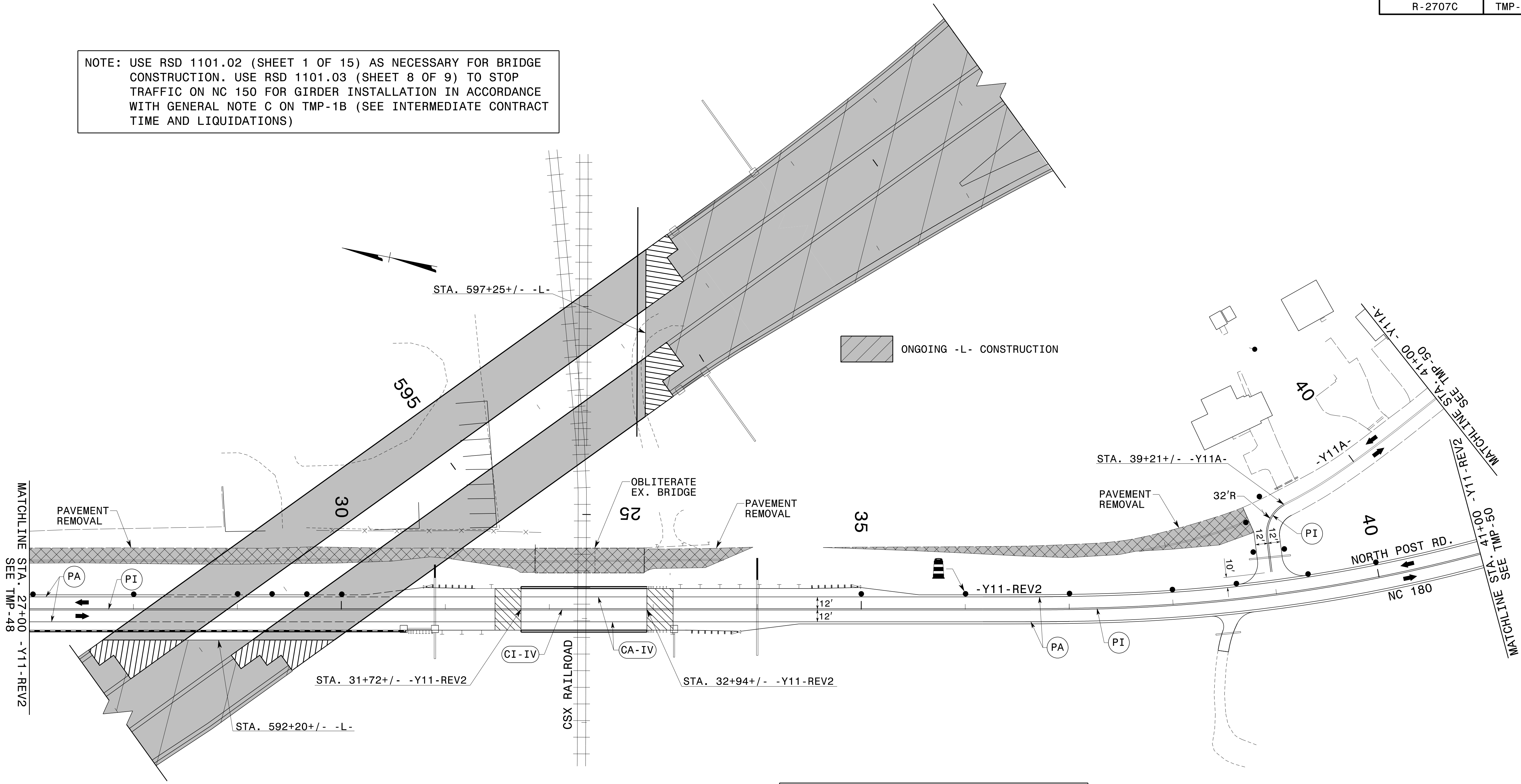


NOTE: USE RSD 1101.02 (SHEET 1 OF 15) AS NECESSARY FOR BRIDGE CONSTRUCTION. USE RSD 1101.03 (SHEET 8 OF 9) TO STOP TRAFFIC ON NC 150 FOR GIRDER INSTALLATION IN ACCORDANCE WITH GENERAL NOTE C ON TMP-1B (SEE INTERMEDIATE CONTRACT TIME AND LIQUIDATIONS)



SEE TMP-49A FOR -Y11-REV2 CROSS-SECTIONS

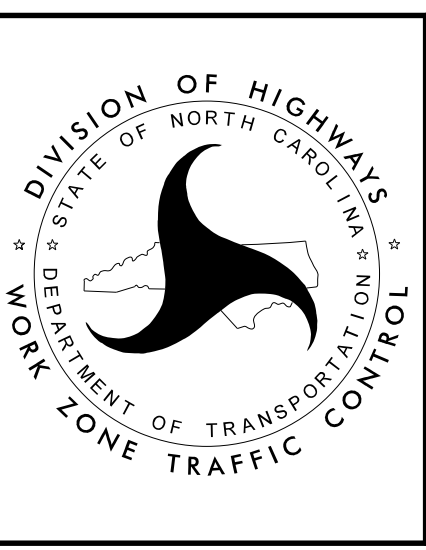
TEMPORARY PAVEMENT MARKING LEGEND	
CA-IV	COLD APPLIED PLASTIC (TYPE 4) - WHITE EDGELINE - (4")
CI-IV	COLD APPLIED PLASTIC (TYPE 4) - YELLOW DOUBLE CENTER - (4")
PA	PAINT - WHITE EDGELINE - (4")
PI	PAINT - YELLOW DOUBLE CENTER - (4")

REFER TO RSD NOS. 1205.01, 1205.02, 1205.12, 1250.01, AND 1251.01 FOR PLACEMENT OF TEMPORARY PAVEMENT MARKINGS AND MARKERS UNLESS NOTED OTHERWISE.

APPROVED: *Don A. Parker*  
40482802618410...

DATE: 2/16/2017

**DOCUMENT NOT CONSIDERED FINAL  
UNLESS ALL SIGNATURES COMPLETED**



**SITE 6  
PHASE II DETAILS  
NORTH POST ROAD  
NC 180  
(-Y11-REV2 AND  
-Y11A-)**

2/16/2017  
 P:\TIP\Projects-R\2707C\TrafficControl\TCP\SITE\_6\2707C\_TC\_SITE6\_PH2\_TMP49.dgn  
 User:scodts