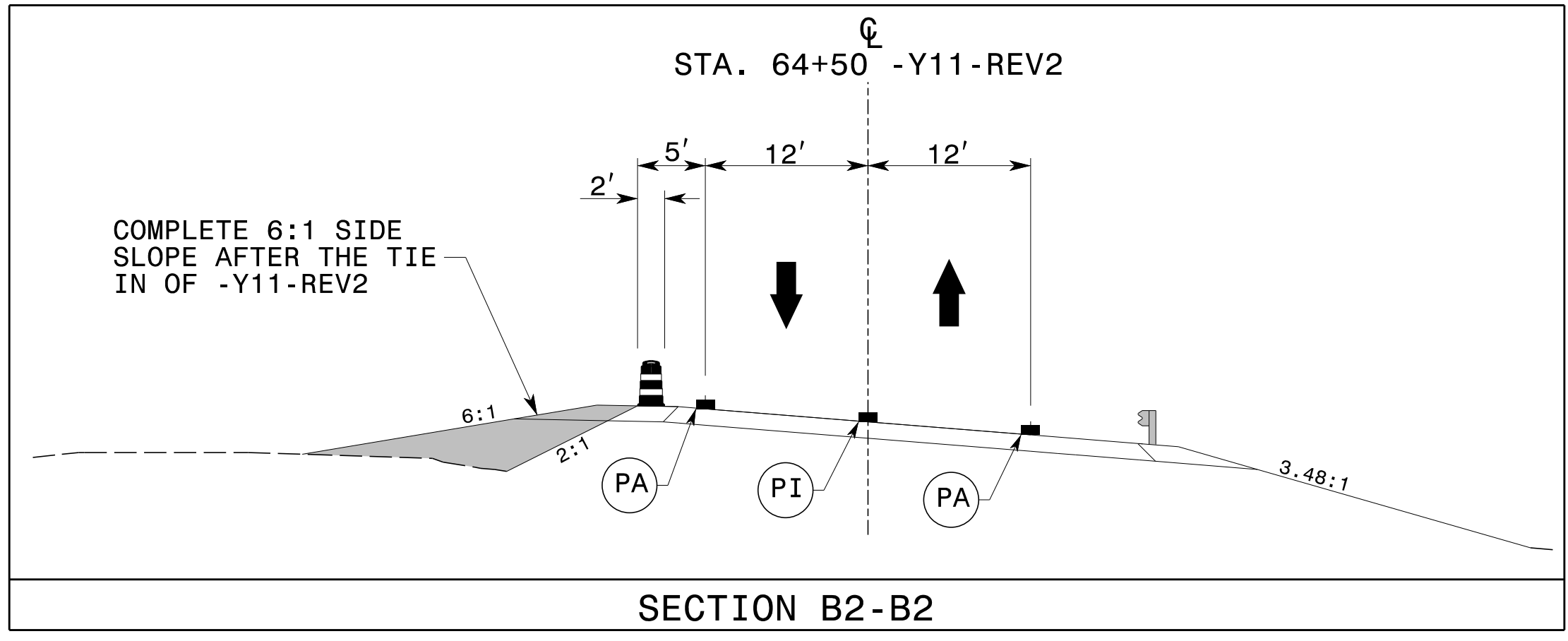
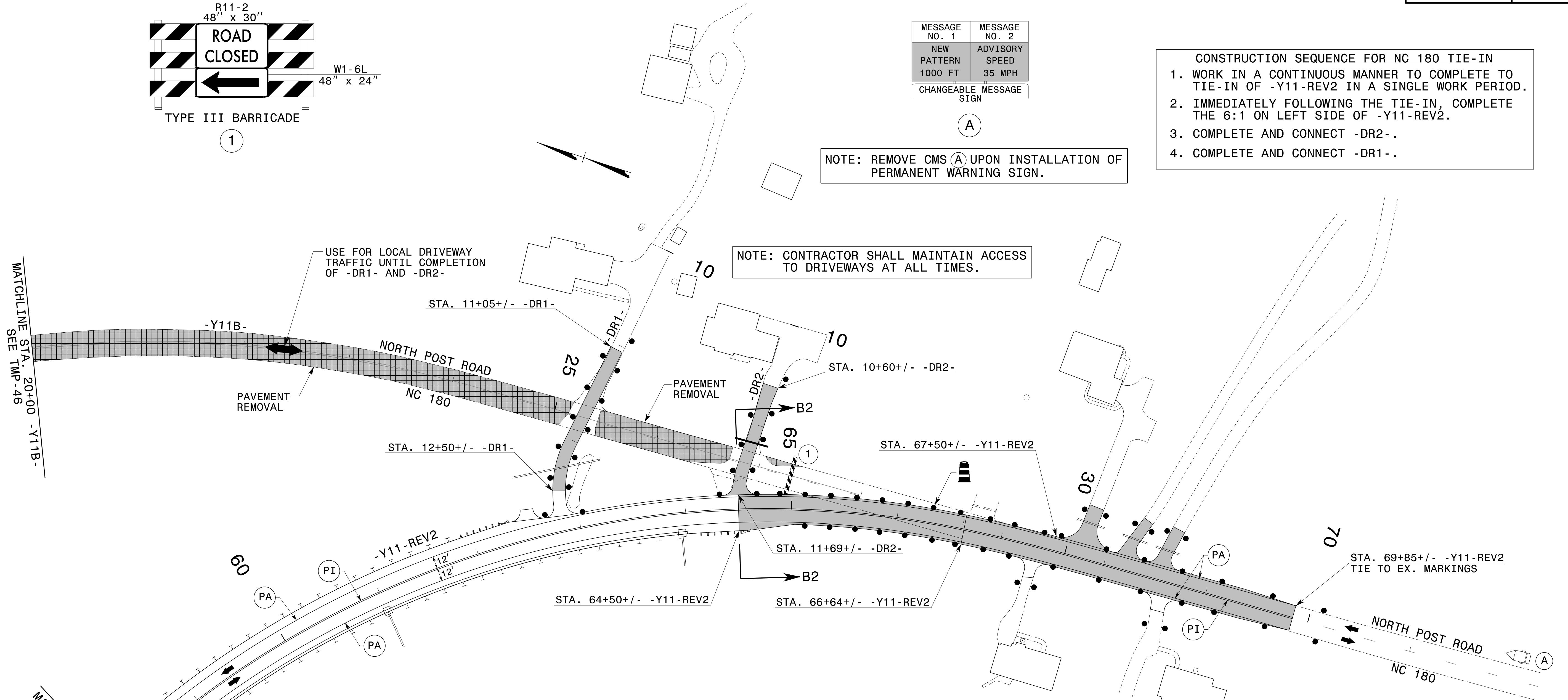


MESSAGE NO. 1	MESSAGE NO. 2
NEW PATTERN	ADVISORY SPEED
1000 FT	35 MPH
CHANGEABLE MESSAGE SIGN	

- CONSTRUCTION SEQUENCE FOR NC 180 TIE-IN**
1. WORK IN A CONTINUOUS MANNER TO COMPLETE TO TIE-IN OF -Y11-REV2 IN A SINGLE WORK PERIOD.
 2. IMMEDIATELY FOLLOWING THE TIE-IN, COMPLETE THE 6:1 ON LEFT SIDE OF -Y11-REV2.
 3. COMPLETE AND CONNECT -DR2-.
 4. COMPLETE AND CONNECT -DR1-.

NOTE: REMOVE CMS (A) UPON INSTALLATION OF PERMANENT WARNING SIGN.

NOTE: CONTRACTOR SHALL MAINTAIN ACCESS TO DRIVEWAYS AT ALL TIMES.



TEMPORARY PAVEMENT MARKING LEGEND

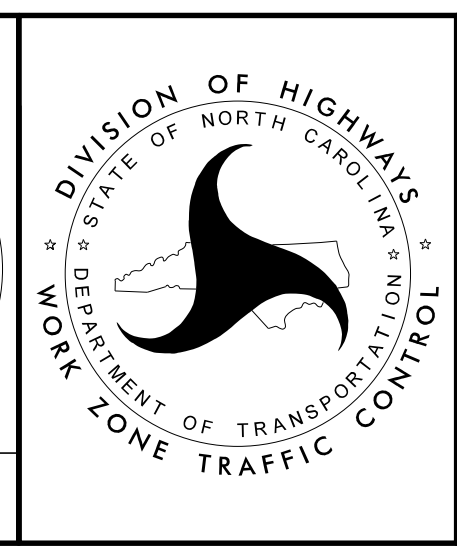
(PA)	PAINT - WHITE EDGELINE - (4")
(PI)	PAINT - YELLOW DOUBLE CENTER - (4")

REFER TO RSD NOS. 1205.01, 1205.12, 1250.01, AND 1251.01 FOR PLACEMENT OF TEMPORARY PAVEMENT MARKINGS AND MARKERS UNLESS NOTED OTHERWISE.

APPROVED: *Don A. Parker*
40048282618410...

DATE: 2/16/2017

DOCUMENT NOT CONSIDERED FINAL UNLESS ALL SIGNATURES COMPLETED



**SITE 6
 PHASE II DETAILS
 NORTH POST ROAD
 NC 180
 (-Y11-REV2 AND -Y11B-)
 STEP 3**

2/16/2017
 P:\TIP\Projects-R\2707C\TrafficControl\TCP\SITE_6\2707C_TC_SITE6_PH2_TMP47.dgn
 User:scodts