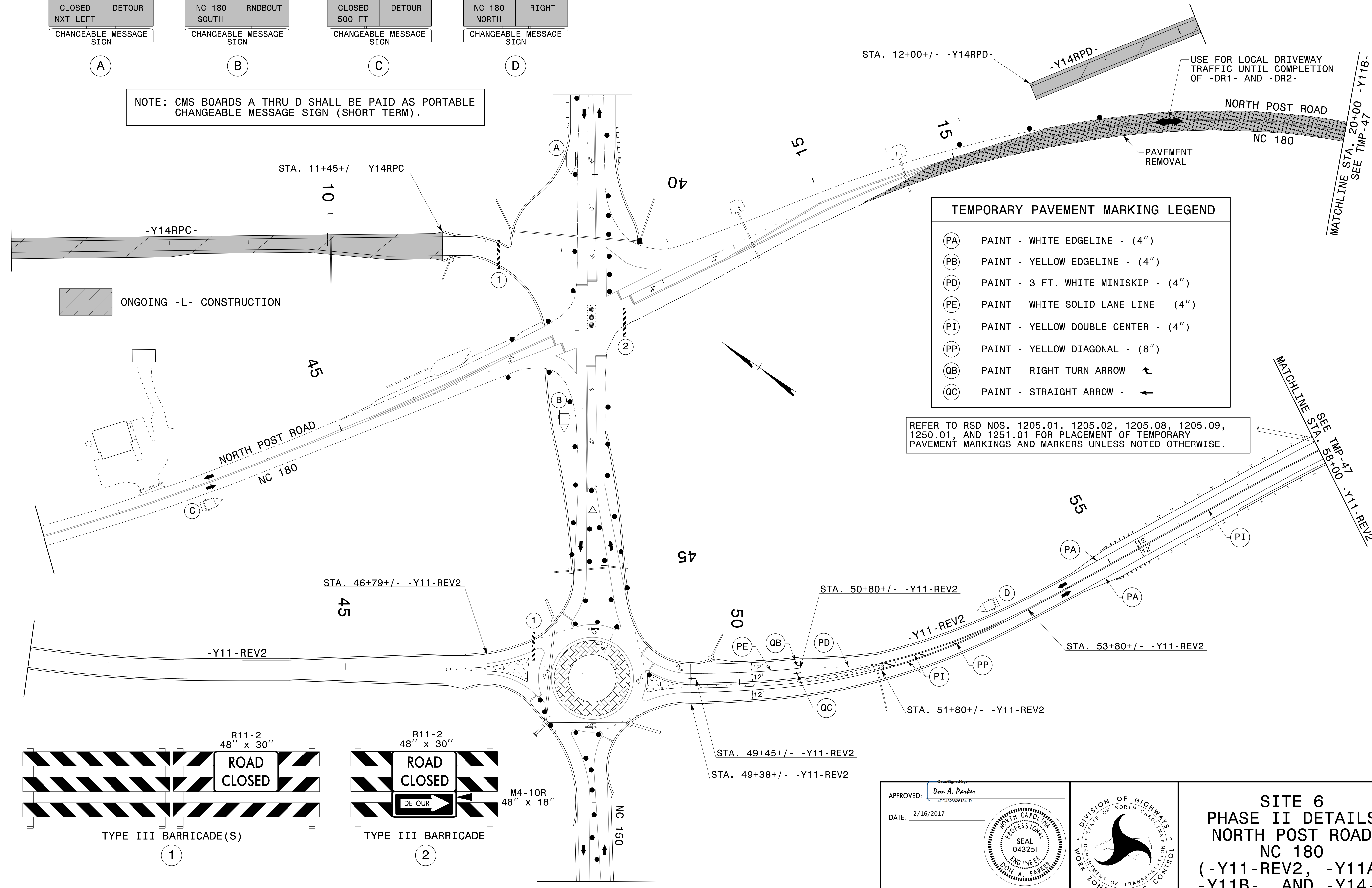


MESSAGE NO. 1 ROAD CLOSED NXT LEFT	MESSAGE NO. 2 FOLLOW DETOUR	MESSAGE NO. 1 TO NC 180 SOUTH	MESSAGE NO. 2 USE RDNBOUT	MESSAGE NO. 1 ROAD CLOSED 500 FT	MESSAGE NO. 2 FOLLOW DETOUR	MESSAGE NO. 1 TO NC 180 NORTH	MESSAGE NO. 2 NEXT RIGHT
CHANGEABLE MESSAGE SIGN		CHANGEABLE MESSAGE SIGN		CHANGEABLE MESSAGE SIGN		CHANGEABLE MESSAGE SIGN	

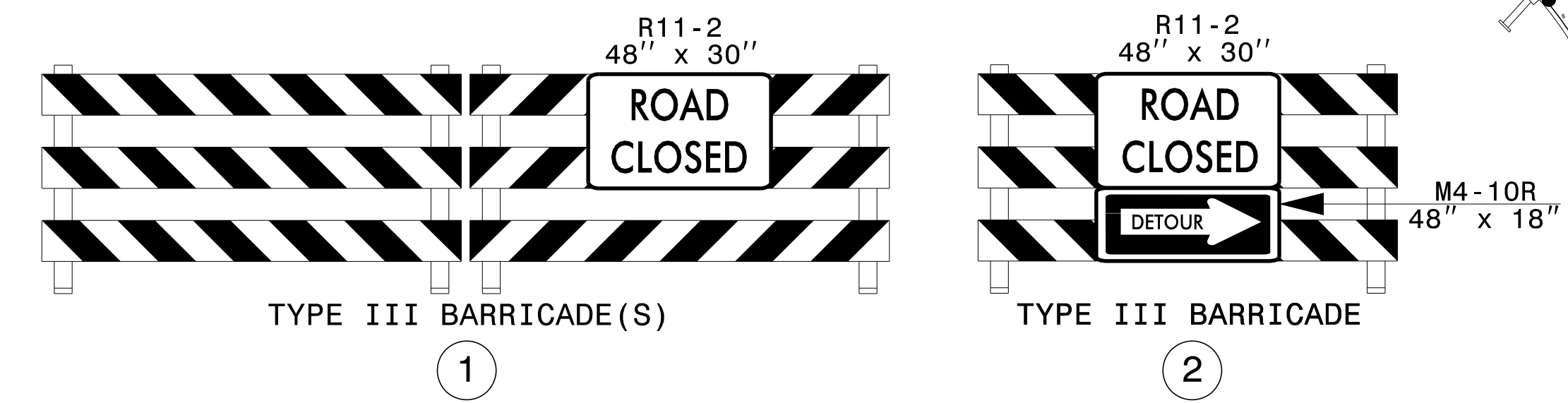
(A) (B) (C) (D)

NOTE: CMS BOARDS A THRU D SHALL BE PAID AS PORTABLE CHANGEABLE MESSAGE SIGN (SHORT TERM).



TEMPORARY PAVEMENT MARKING LEGEND	
(PA)	PAINT - WHITE EDGELINE - (4")
(PB)	PAINT - YELLOW EDGELINE - (4")
(PD)	PAINT - 3 FT. WHITE MINISKIP - (4")
(PE)	PAINT - WHITE SOLID LANE LINE - (4")
(PI)	PAINT - YELLOW DOUBLE CENTER - (4")
(PP)	PAINT - YELLOW DIAGONAL - (8")
(QB)	PAINT - RIGHT TURN ARROW - ↘
(QC)	PAINT - STRAIGHT ARROW - →

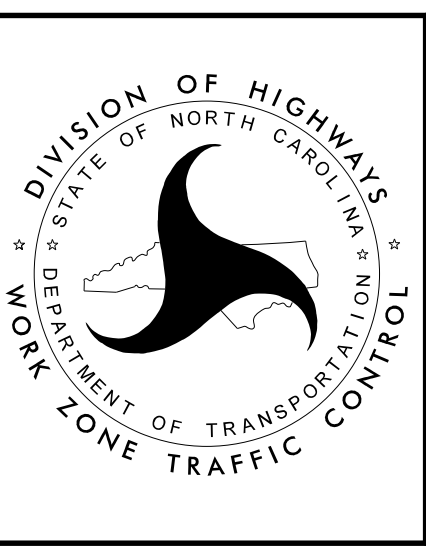
REFER TO RSD NOS. 1205.01, 1205.02, 1205.08, 1205.09, 1250.01, AND 1251.01 FOR PLACEMENT OF TEMPORARY PAVEMENT MARKINGS AND MARKERS UNLESS NOTED OTHERWISE.



APPROVED: *Don A. Parker*  
 DATE: 2/16/2017

SEAL  
 043251  
 ENGINEER  
 DON A. PARKER

DOCUMENT NOT CONSIDERED FINAL  
 UNLESS ALL SIGNATURES COMPLETED



**SITE 6**  
**PHASE II DETAILS**  
**NORTH POST ROAD**  
**NC 180**  
**(-Y11-REV2, -Y11A,**  
**-Y11B-, AND -Y14-)**

2/16/2017  
 P:\TIP\Projects-R\2707C\TrafficControl\TCP\SITE\_6\2707C\_TC\_SITE6\_PH2\_TMP46.dgn  
 User:scodts