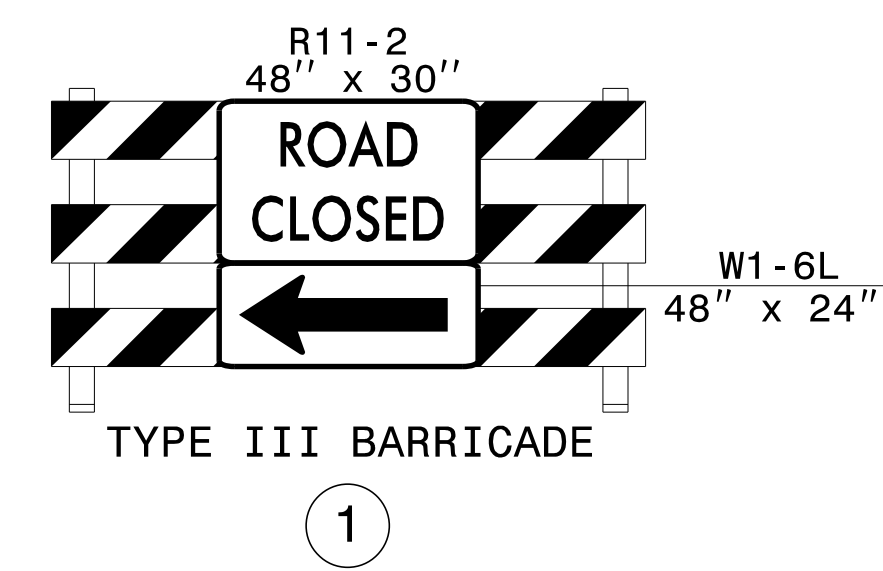
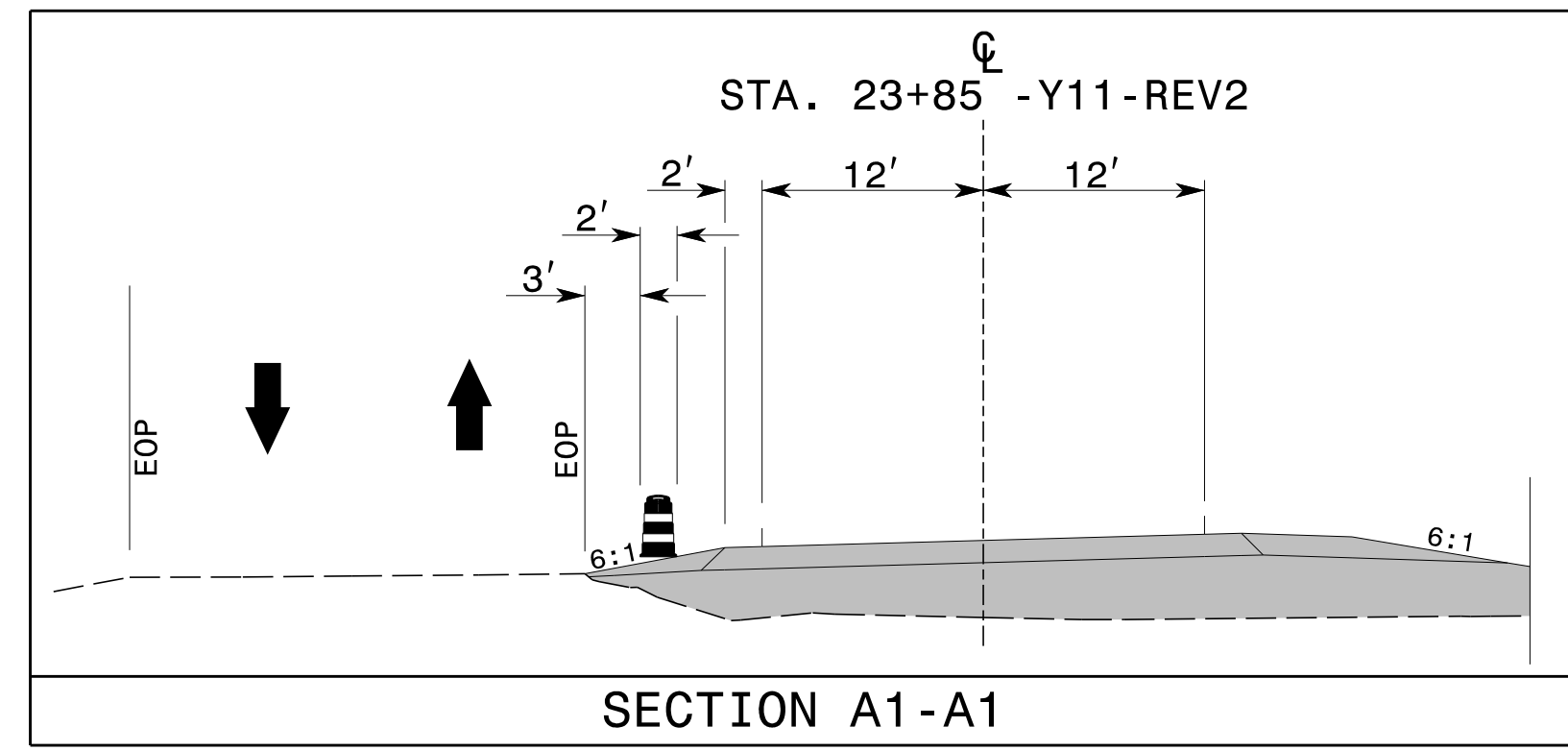
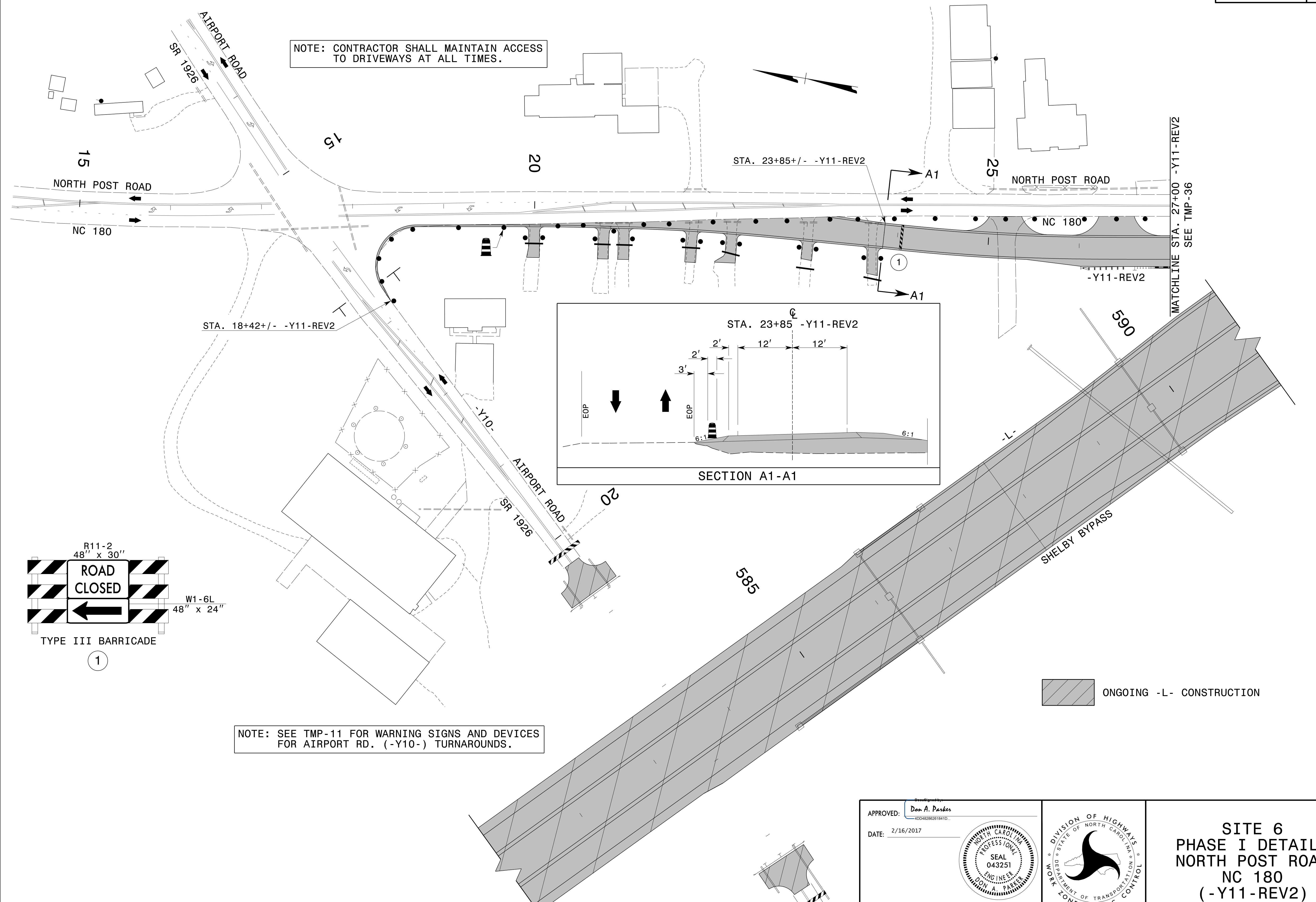


NOTE: CONTRACTOR SHALL MAINTAIN ACCESS TO DRIVEWAYS AT ALL TIMES.



NOTE: SEE TMP-11 FOR WARNING SIGNS AND DEVICES FOR AIRPORT RD. (-Y10-) TURNAROUNDS.

ONGOING -L- CONSTRUCTION

2/16/2017  
 P:\TIP\Projects-R\2707C\TrafficControl\TCP\SITE\_6\2707C\_TC\_SITE6\_PHL\_TMP35.dgn  
 User:scodts

APPROVED: *Don A. Parker*  
 DATE: 2/16/2017

**DOCUMENT NOT CONSIDERED FINAL  
UNLESS ALL SIGNATURES COMPLETED**

**SITE 6  
PHASE I DETAILS  
NORTH POST ROAD  
NC 180  
(-Y11-REV2)**