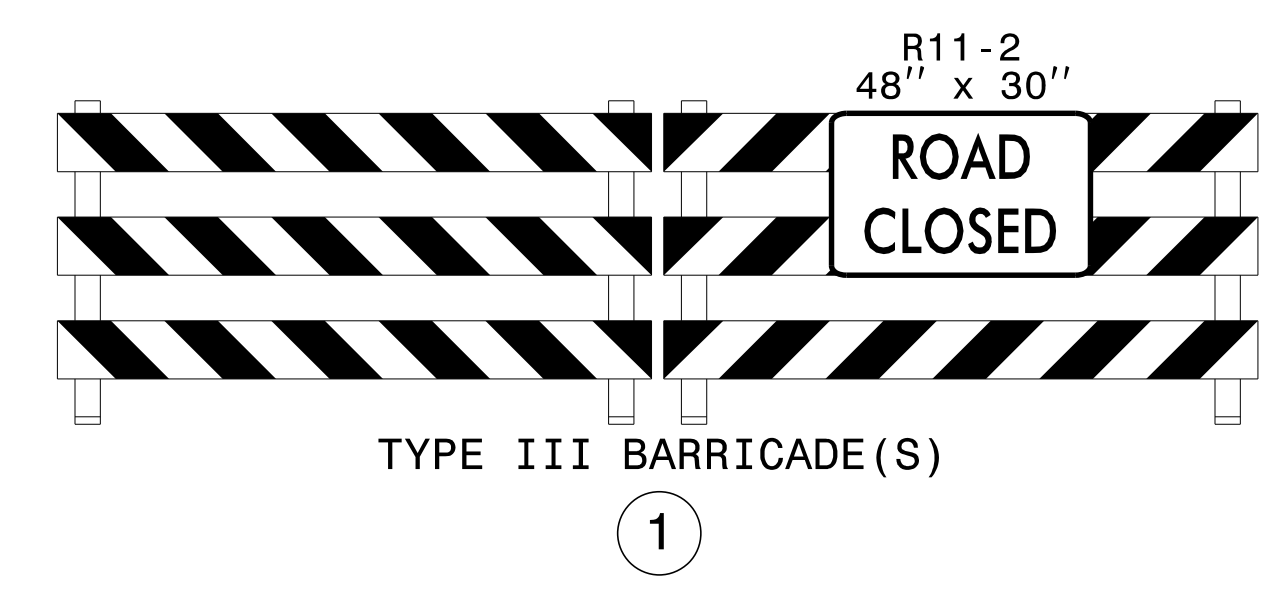
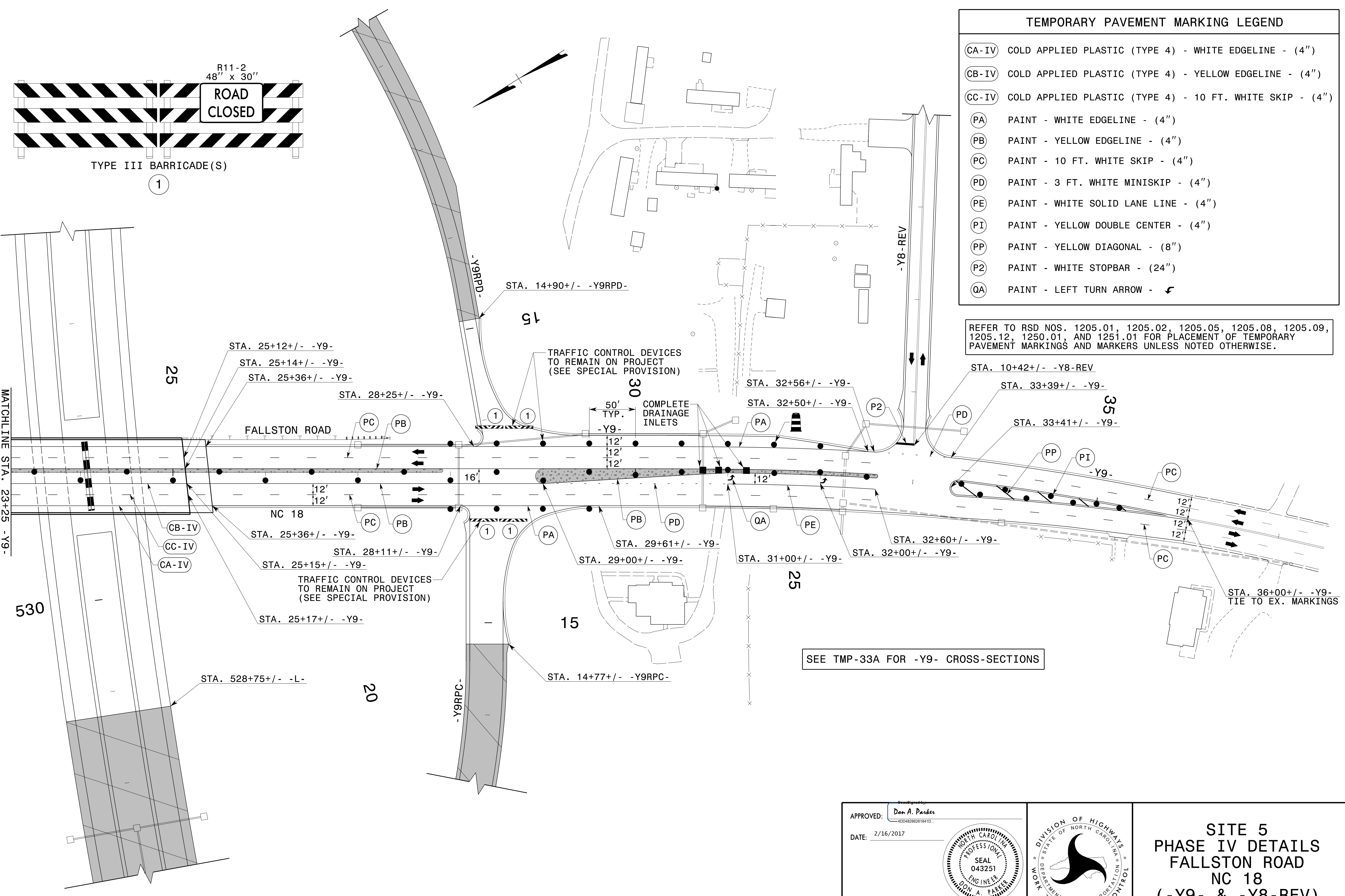


TEMPORARY PAVEMENT MARKING LEGEND	
(GA-IV)	COLD APPLIED PLASTIC (TYPE 4) - WHITE EDGELINE - (4")
(GB-IV)	COLD APPLIED PLASTIC (TYPE 4) - YELLOW EDGELINE - (4")
(CC-IV)	COLD APPLIED PLASTIC (TYPE 4) - 10 FT. WHITE SKIP - (4")
(PA)	PAINT - WHITE EDGELINE - (4")
(PB)	PAINT - YELLOW EDGELINE - (4")
(PC)	PAINT - 10 FT. WHITE SKIP - (4")
(PD)	PAINT - 3 FT. WHITE MINISKIP - (4")
(PE)	PAINT - WHITE SOLID LANE LINE - (4")
(PI)	PAINT - YELLOW DOUBLE CENTER - (4")
(PP)	PAINT - YELLOW DIAGONAL - (8")
(P2)	PAINT - WHITE STOPBAR - (24")
(QA)	PAINT - LEFT TURN ARROW - ↙

REFER TO RSD NOS. 1205.01, 1205.02, 1205.05, 1205.08, 1205.09, 1205.12, 1250.01, AND 1251.01 FOR PLACEMENT OF TEMPORARY PAVEMENT MARKINGS AND MARKERS UNLESS NOTED OTHERWISE.

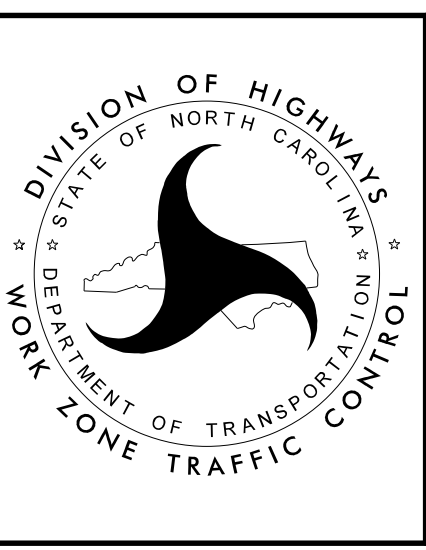


APPROVED: *Don A. Parker*  
40482802618410...

DATE: 2/16/2017

**SEAL**  
 043251  
 ENGINEER  
 DON A. PARKER

**DOCUMENT NOT CONSIDERED FINAL UNLESS ALL SIGNATURES COMPLETED**



**SITE 5  
 PHASE IV DETAILS  
 FALLSTON ROAD  
 NC 18  
 (-Y9- & -Y8-REV)**

2/16/2017  
 P:\TIP\Projects-R\2707C\TrafficControl\TCP\SITE 5\R2707C\_TC\_SITE5\_PH4\_TMP34.dgn  
 User:scodts