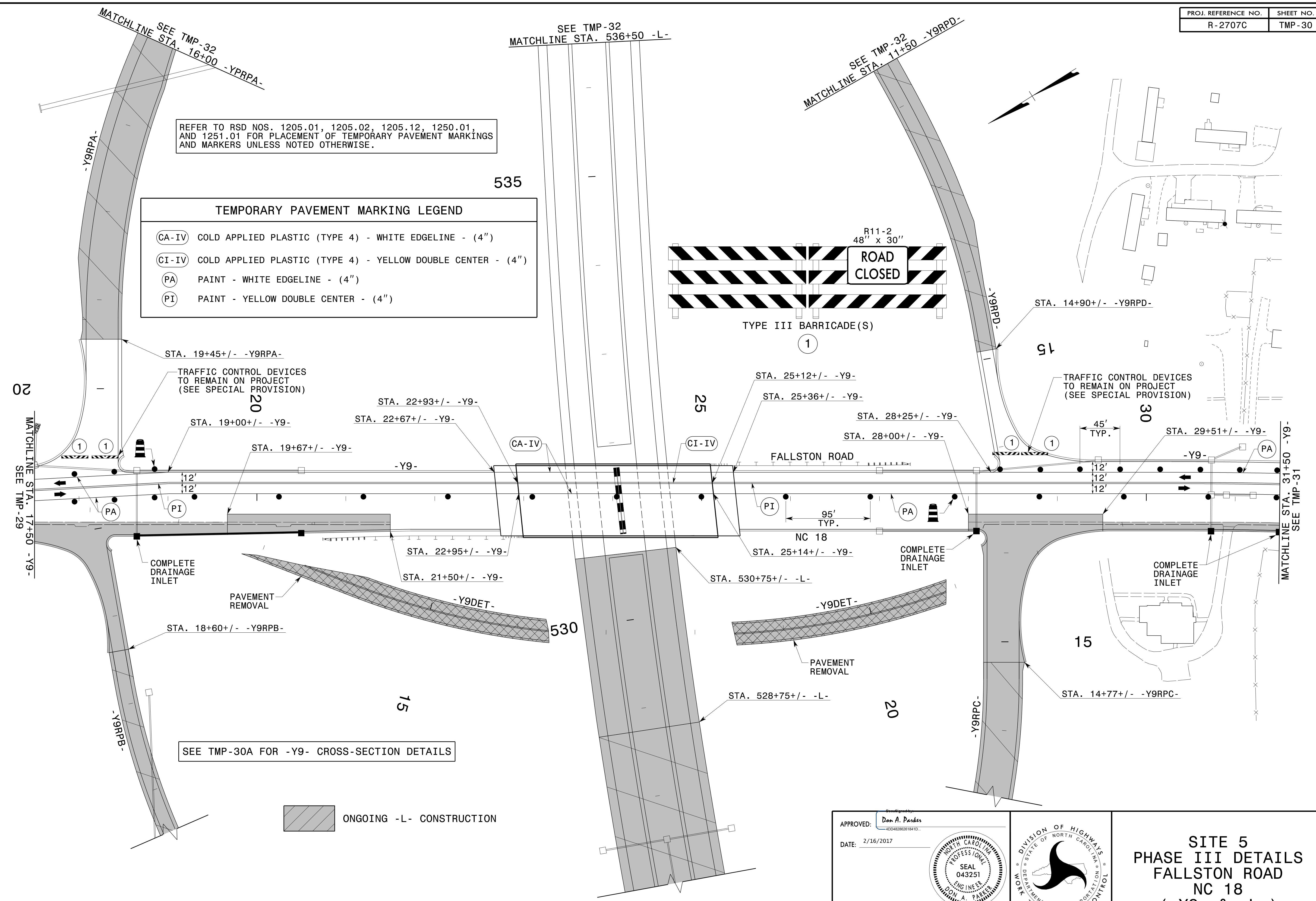
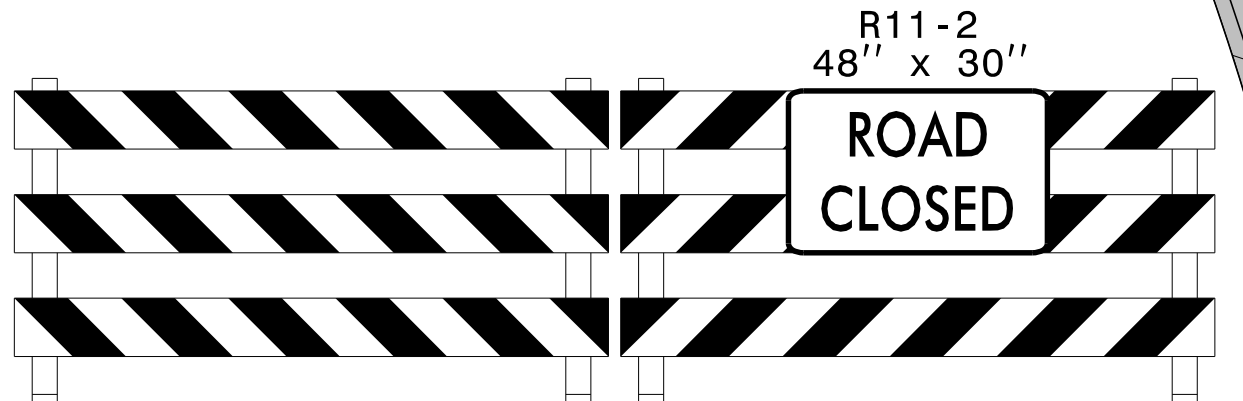


REFER TO RSD NOS. 1205.01, 1205.02, 1205.12, 1250.01, AND 1251.01 FOR PLACEMENT OF TEMPORARY PAVEMENT MARKINGS AND MARKERS UNLESS NOTED OTHERWISE.

TEMPORARY PAVEMENT MARKING LEGEND	
CA-IV	COLD APPLIED PLASTIC (TYPE 4) - WHITE EDGELINE - (4")
CI-IV	COLD APPLIED PLASTIC (TYPE 4) - YELLOW DOUBLE CENTER - (4")
PA	PAINT - WHITE EDGELINE - (4")
PI	PAINT - YELLOW DOUBLE CENTER - (4")

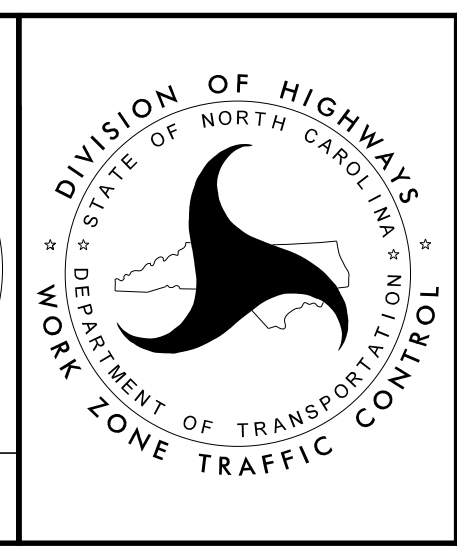


2/16/2017
P:\TIP\Projects-R\2707C\TrafficControl\TCP\SITE_5\AR2707C_TC_SITES_PH3_TMP30.dgn
User:scodts

APPROVED: *Don A. Parker*
40482802618410...

DATE: 2/16/2017

DOCUMENT NOT CONSIDERED FINAL
UNLESS ALL SIGNATURES COMPLETED



**SITE 5
PHASE III DETAILS
FALLSTON ROAD
NC 18
(-Y9- & -L-)**