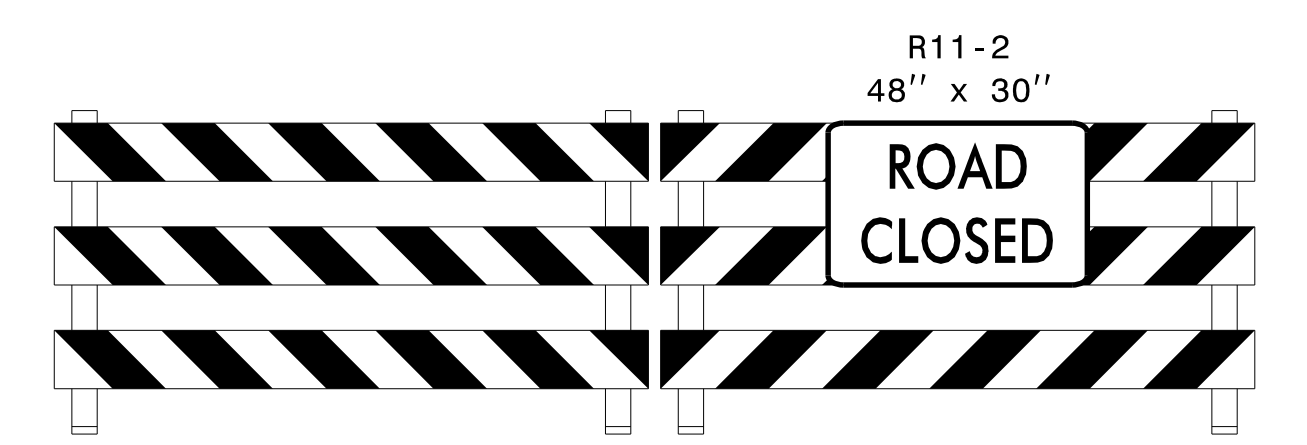
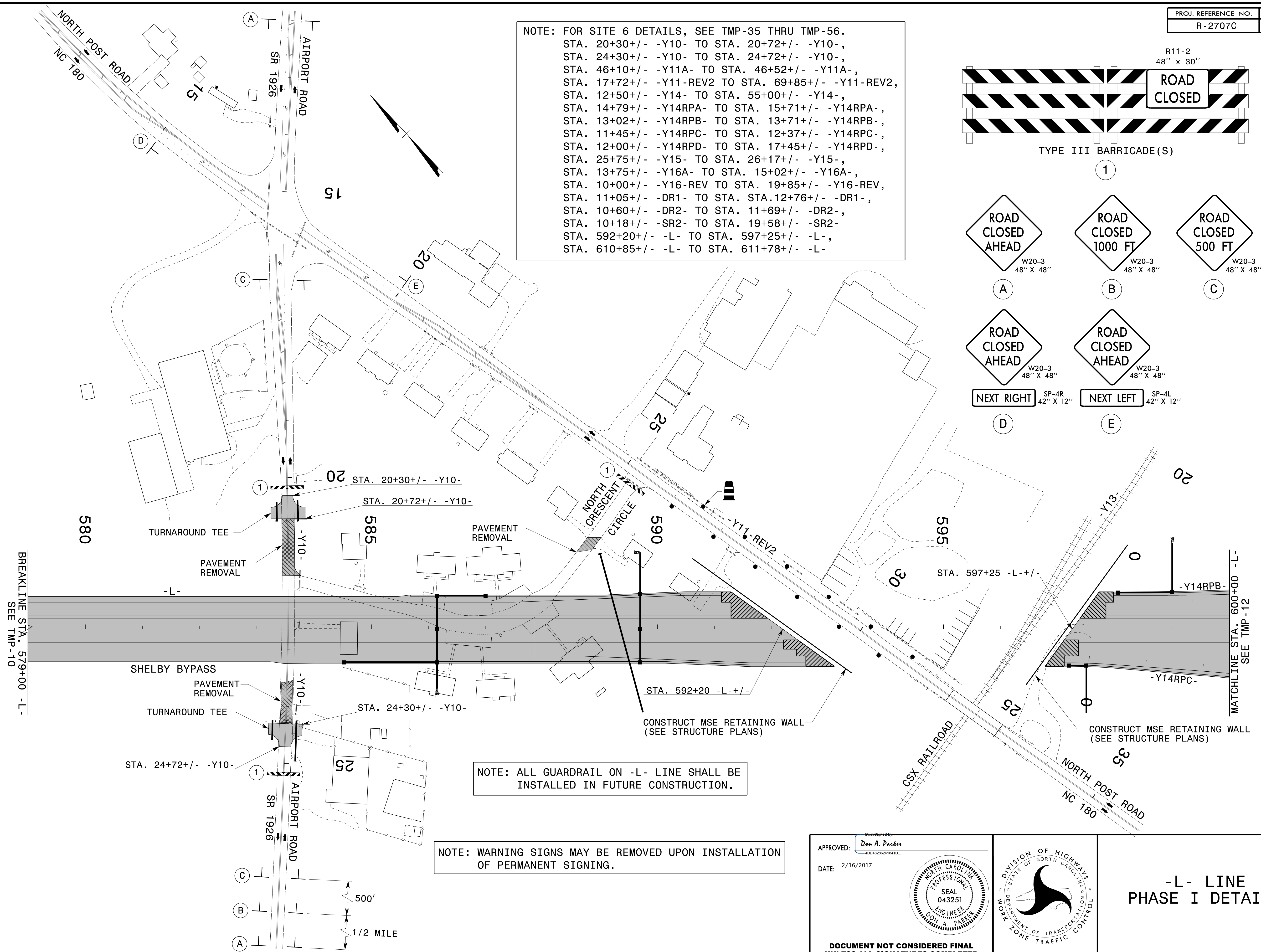
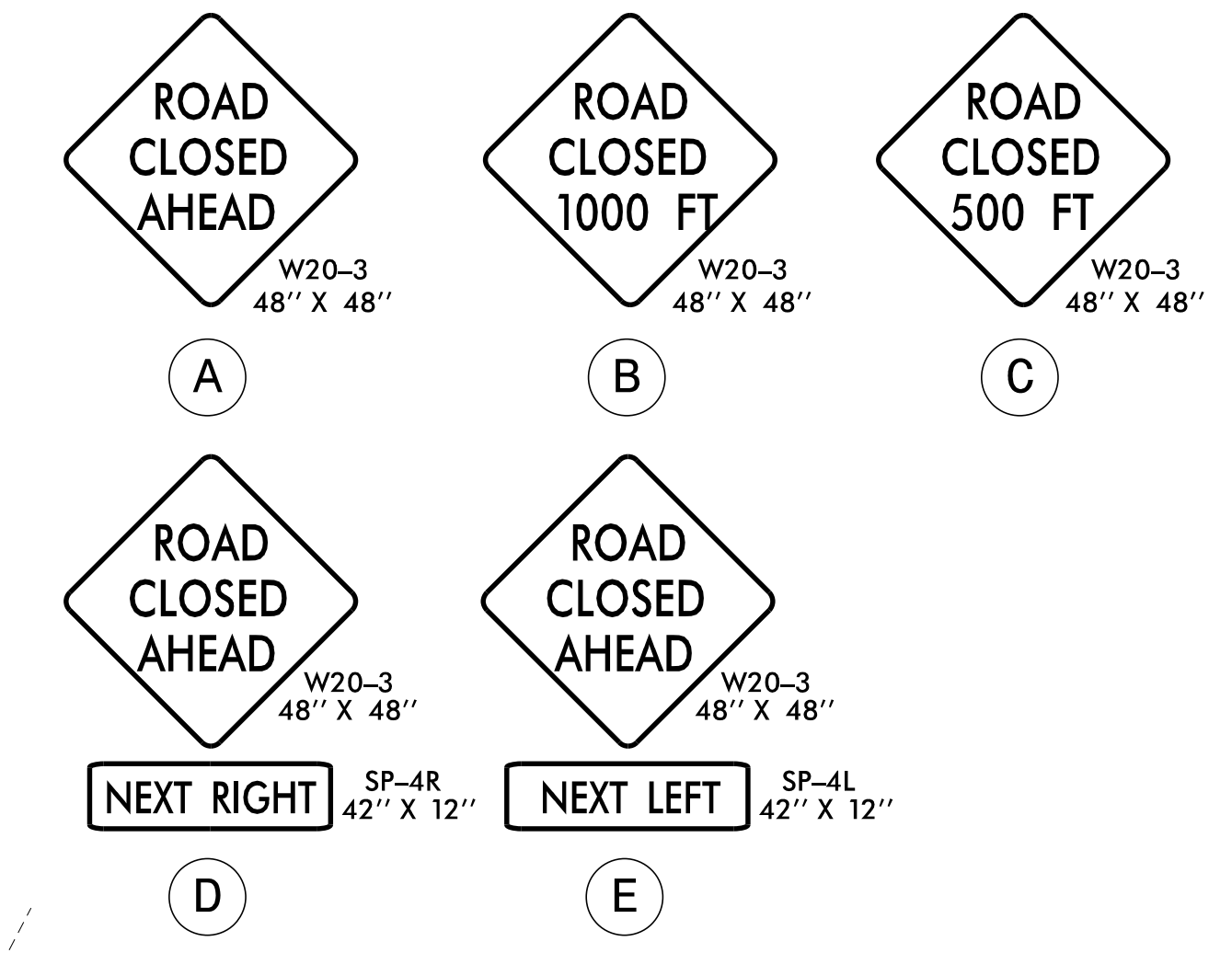


NOTE: FOR SITE 6 DETAILS, SEE TMP-35 THRU TMP-56.  
 STA. 20+30+/- -Y10- TO STA. 20+72+/- -Y10- ,  
 STA. 24+30+/- -Y10- TO STA. 24+72+/- -Y10- ,  
 STA. 46+10+/- -Y11A- TO STA. 46+52+/- -Y11A- ,  
 STA. 17+72+/- -Y11-REV2 TO STA. 69+85+/- -Y11-REV2 ,  
 STA. 12+50+/- -Y14- TO STA. 55+00+/- -Y14- ,  
 STA. 14+79+/- -Y14RPA- TO STA. 15+71+/- -Y14RPA- ,  
 STA. 13+02+/- -Y14RPB- TO STA. 13+71+/- -Y14RPB- ,  
 STA. 11+45+/- -Y14RPC- TO STA. 12+37+/- -Y14RPC- ,  
 STA. 12+00+/- -Y14RPD- TO STA. 17+45+/- -Y14RPD- ,  
 STA. 25+75+/- -Y15- TO STA. 26+17+/- -Y15- ,  
 STA. 13+75+/- -Y16A- TO STA. 15+02+/- -Y16A- ,  
 STA. 10+00+/- -Y16-REV TO STA. 19+85+/- -Y16-REV ,  
 STA. 11+05+/- -DR1- TO STA. STA.12+76+/- -DR1- ,  
 STA. 10+60+/- -DR2- TO STA. 11+69+/- -DR2- ,  
 STA. 10+18+/- -SR2- TO STA. 19+58+/- -SR2- ,  
 STA. 592+20+/- -L- TO STA. 597+25+/- -L- ,  
 STA. 610+85+/- -L- TO STA. 611+78+/- -L-



TYPE III BARRICADE(S)

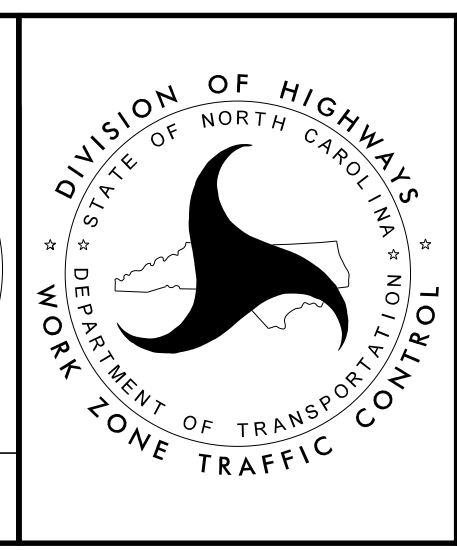


NOTE: ALL GUARDRAIL ON -L- LINE SHALL BE INSTALLED IN FUTURE CONSTRUCTION.

NOTE: WARNING SIGNS MAY BE REMOVED UPON INSTALLATION OF PERMANENT SIGNING.

APPROVED: *Don A. Parker*  
 DATE: 2/16/2017

**DOCUMENT NOT CONSIDERED FINAL UNLESS ALL SIGNATURES COMPLETED**



**-L- LINE PHASE I DETAILS**

2/16/2017  
 P:\TIP\Projects-R\2707C\TrafficControl\TCP\ -L- LINE\2707C\_TC\_PHL\_TMP11.dgn  
 User:scodts