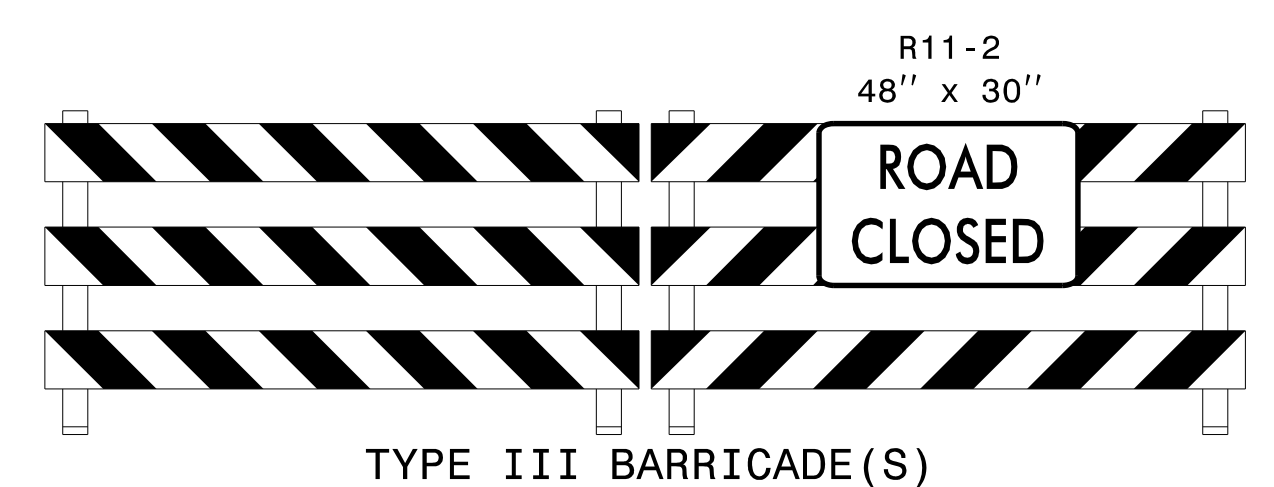


NOTE: FOR SITE 5 DETAILS, SEE TMP-22 THRU TMP-34.
 STA. 24+12+/- -Y8- TO STA. 24+85+/- -Y8- ,
 STA. 33+00+/- -Y8A- TO STA. 35+97+/- -Y8A- ,
 STA. 10+24+/- -Y8-REV TO STA. 36+00+/- -Y8-REV ,
 STA. 11+06+/- -Y9DET- TO STA. 24+22+/- -Y9DET- ,
 STA. 10+70+/- -Y9- TO STA. 36+00+/- -Y9- ,
 STA. 19+45+/- -Y9RPA- TO STA. 20+94+/- -Y9RPA- ,
 STA. 18+60+/- -Y9RPB- TO STA. 20+00+/- -Y9RPB- ,
 STA. 14+77+/- -Y9RPC- TO STA. 16+27+/- -Y9RPC- ,
 STA. 2+55+/- -Y9RPD- TO STA. 8+50+/- -Y9RPD- ,
 STA. 14+90+/- -Y9RPD- TO STA. 16+29+/- -Y9RPD- ,
 STA. 528+75+/- -L- TO STA. 544+50+/- -L-

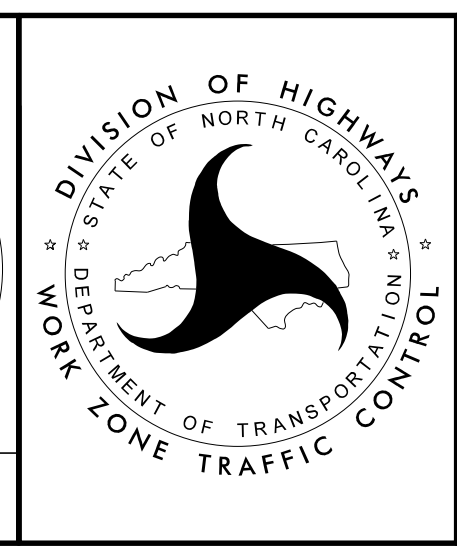
NOTE: ALL GUARDRAIL ON -L- LINE SHALL BE INSTALLED IN FUTURE CONSTRUCTION. ALL DRAINAGE INLETS ON -L- LINE SHALL BE COVERED.



APPROVED: *Don A. Parker*
 DATE: 2/16/2017

SEAL
 043251
 ENGINEER
 DON A. PARKER

DOCUMENT NOT CONSIDERED FINAL
 UNLESS ALL SIGNATURES COMPLETED



-L- LINE
 PHASE I DETAILS

2/16/2017
 P:\TIP\Projects-R\2707C\TrafficControl\TCP\1- LINE\2707C_TC_PHL_TMP09.dgn
 User:scodts

