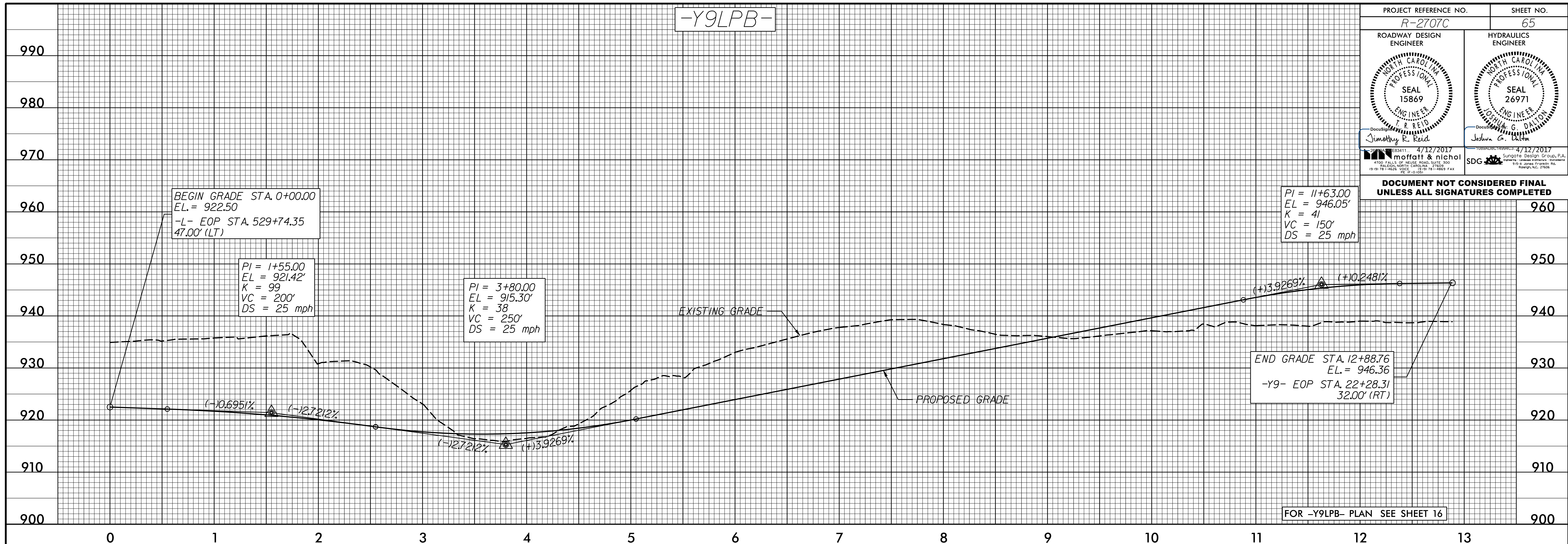


-Y9LPB-

PROJECT REFERENCE NO. R-2707C	SHEET NO. 65
ROADWAY DESIGN ENGINEER SEAL 15869 J. R. REID moffatt & nichol	HYDRAULICS ENGINEER SEAL 26971 JOSHUA G. DALTON SDG
4/12/2017	4/12/2017

4700 FALLS OF NEUSE ROAD, SUITE 300
RALEIGH, NORTH CAROLINA 27609
919-881-4626 FAX 919-889-7744

4700 FALLS OF NEUSE ROAD, SUITE 300
RALEIGH, NORTH CAROLINA 27609
919-881-4626 FAX 919-889-7744



DOCUMENT NOT CONSIDERED FINAL UNLESS ALL SIGNATURES COMPLETED

960

950

940

930

920

910

900

0

1

2

3

4

5

6

7

8

9

10

11

12

13