

-Y9RPD-

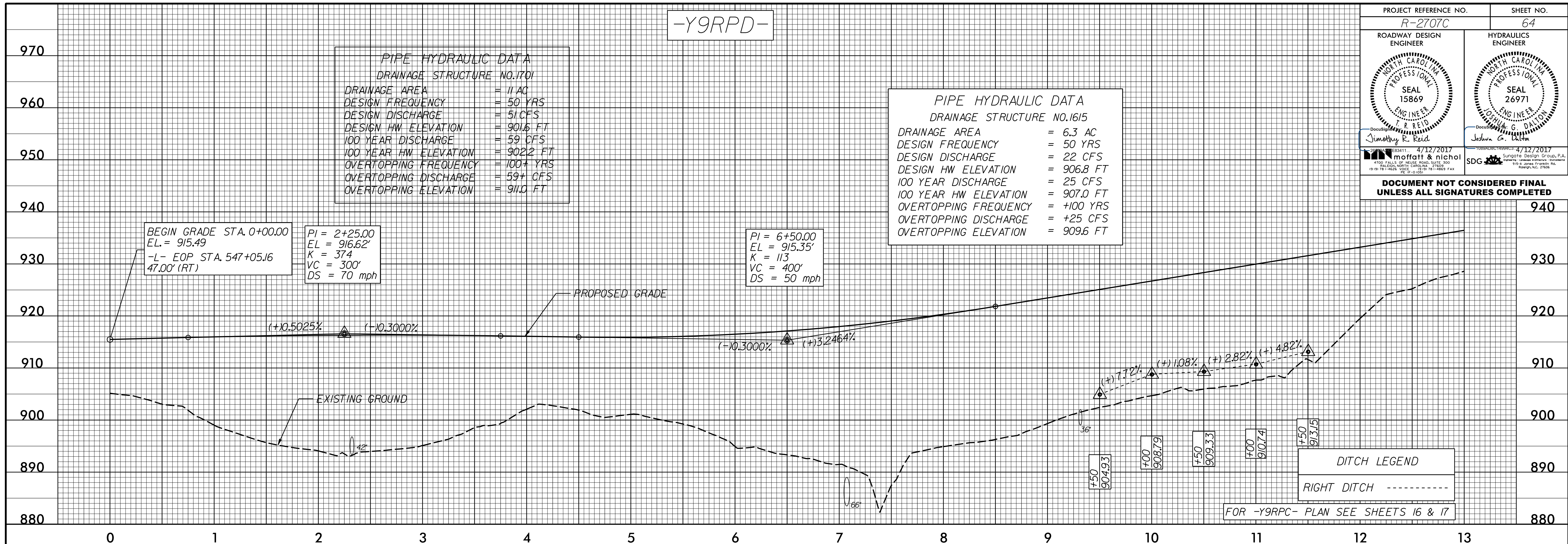
PROJECT REFERENCE NO. R-2707C	SHEET NO. 64
ROADWAY DESIGN ENGINEER J. R. REID SEAL 15869 NORTH CAROLINA PROFESSIONAL ENGINEER	HYDRAULICS ENGINEER JOSHUA G. DALTON SEAL 26971 NORTH CAROLINA PROFESSIONAL ENGINEER
4/12/2017 moffatt & nichol 4700 FALLS OF NEUSE ROAD, SUITE 300 RALEIGH, NORTH CAROLINA 27609 919-881-4626 FAX 919-881-4689 FAX	4/12/2017 SDG Sungate Design Group, P.A. 1100 S. JONES FERRY RD. DURHAM, NC 27604
DOCUMENT NOT CONSIDERED FINAL UNLESS ALL SIGNATURES COMPLETED	

PIPE HYDRAULIC DATA
DRAINAGE STRUCTURE NO.1701

DRAINAGE AREA = 11 AC
DESIGN FREQUENCY = 50 YRS
DESIGN DISCHARGE = 51 CFS
DESIGN HW ELEVATION = 901.6 FT
100 YEAR DISCHARGE = 59 CFS
100 YEAR HW ELEVATION = 902.2 FT
OVERTOPPING FREQUENCY = 100+ YRS
OVERTOPPING DISCHARGE = 59+ CFS
OVERTOPPING ELEVATION = 911.0 FT

PIPE HYDRAULIC DATA
DRAINAGE STRUCTURE NO.1615

DRAINAGE AREA = 6.3 AC
DESIGN FREQUENCY = 50 YRS
DESIGN DISCHARGE = 22 CFS
DESIGN HW ELEVATION = 906.8 FT
100 YEAR DISCHARGE = 25 CFS
100 YEAR HW ELEVATION = 907.0 FT
OVERTOPPING FREQUENCY = +100 YRS
OVERTOPPING DISCHARGE = +25 CFS
OVERTOPPING ELEVATION = 909.6 FT



-Y9RPD-

PI = 14+20.00
EL = 940.34'
K = 142
VC = 200'
DS = 50 mph

END GRADE STA. 16+27.24
EL. = 944.15
-Y9- EOP STA. 28+39.11
33.43' (RT)

PROPOSED GRADE

EXISTING GROUND

