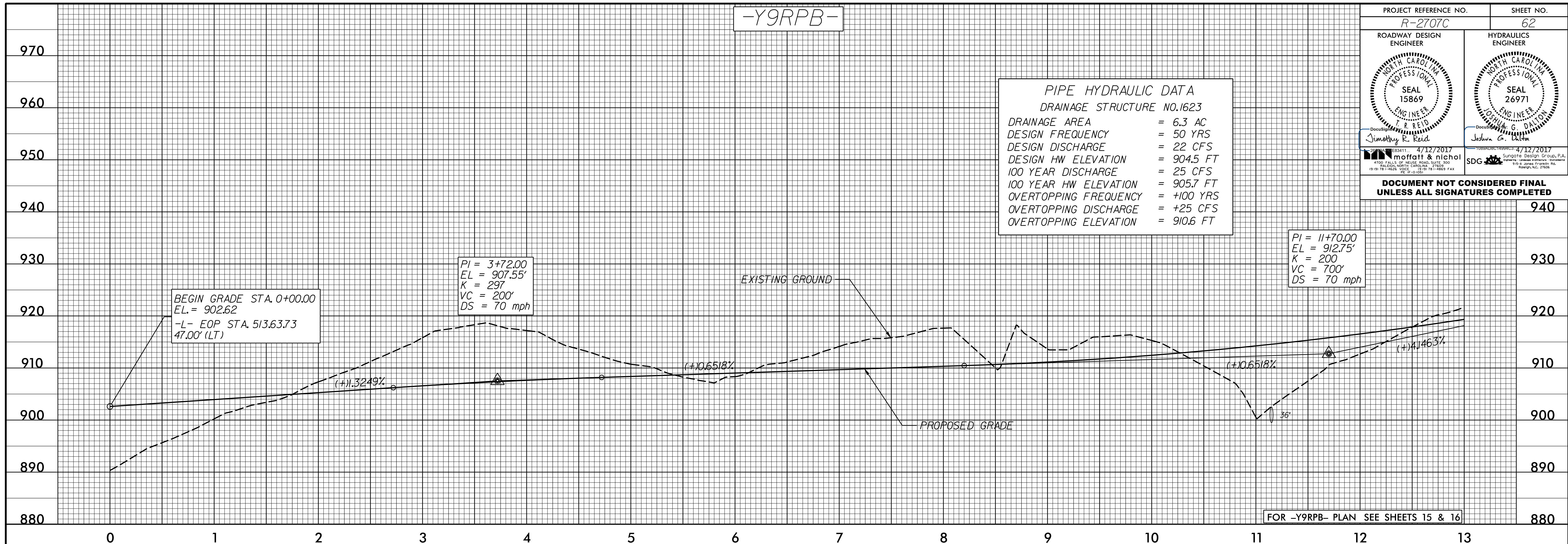


-Y9RPB-

PROJECT REFERENCE NO. R-2707C	SHEET NO. 62
ROADWAY DESIGN ENGINEER JIMMEY R. REID NORTH CAROLINA PROFESSIONAL SEAL 15869	HYDRAULICS ENGINEER JOSHUA G. DALTON NORTH CAROLINA PROFESSIONAL SEAL 26971
4/12/2017 moffatt & nichol	4/12/2017 SDG
DOCUMENT NOT CONSIDERED FINAL UNLESS ALL SIGNATURES COMPLETED	

PIPE HYDRAULIC DATA
DRAINAGE STRUCTURE NO.1623

DRAINAGE AREA = 6.3 AC
DESIGN FREQUENCY = 50 YRS
DESIGN DISCHARGE = 22 CFS
DESIGN HW ELEVATION = 904.5 FT
100 YEAR DISCHARGE = 25 CFS
100 YEAR HW ELEVATION = 905.7 FT
OVERTOPPING FREQUENCY = +100 YRS
OVERTOPPING DISCHARGE = +25 CFS
OVERTOPPING ELEVATION = 910.6 FT



-Y9RPB-

