

PROJECT REFERENCE NO. R-2707C	SHEET NO. 43
ROADWAY DESIGN ENGINEER JIMOTHY R. REID SEAL 15869 ENGINEER	HYDRAULICS ENGINEER JOSHUA G. DALTON SEAL 26971 ENGINEER
4/12/2017 moffatt & nichol 4700 FALLS OF NEUSE ROAD, SUITE 300 RALEIGH, NORTH CAROLINA 27609 919.881.4626 FAX 919.881.4629	4/12/2017 SDG Sungate Design Group, P.A. 114 Jones Branch Rd. Farmingdale, NY 11735 631.273.8800
DOCUMENT NOT CONSIDERED FINAL UNLESS ALL SIGNATURES COMPLETED	

# -L- US 74 (SHELBY BYPASS)

**BRIDGE HYDRAULIC DATA**

DESIGN DISCHARGE	= 20,200 CFS
DESIGN FREQUENCY	= 50 YRS
DESIGN HW ELEVATION	= 716.2 FT
BASE DISCHARGE	= 23,400 CFS
BASE FREQUENCY	= 100 YRS
BASE HW ELEVATION	= 717.69 FT
OVERTOPPING DISCHARGE	= +31,700 CFS
OVERTOPPING FREQUENCY	= +500 YRS
OVERTOPPING ELEVATION	= 733.80 FT

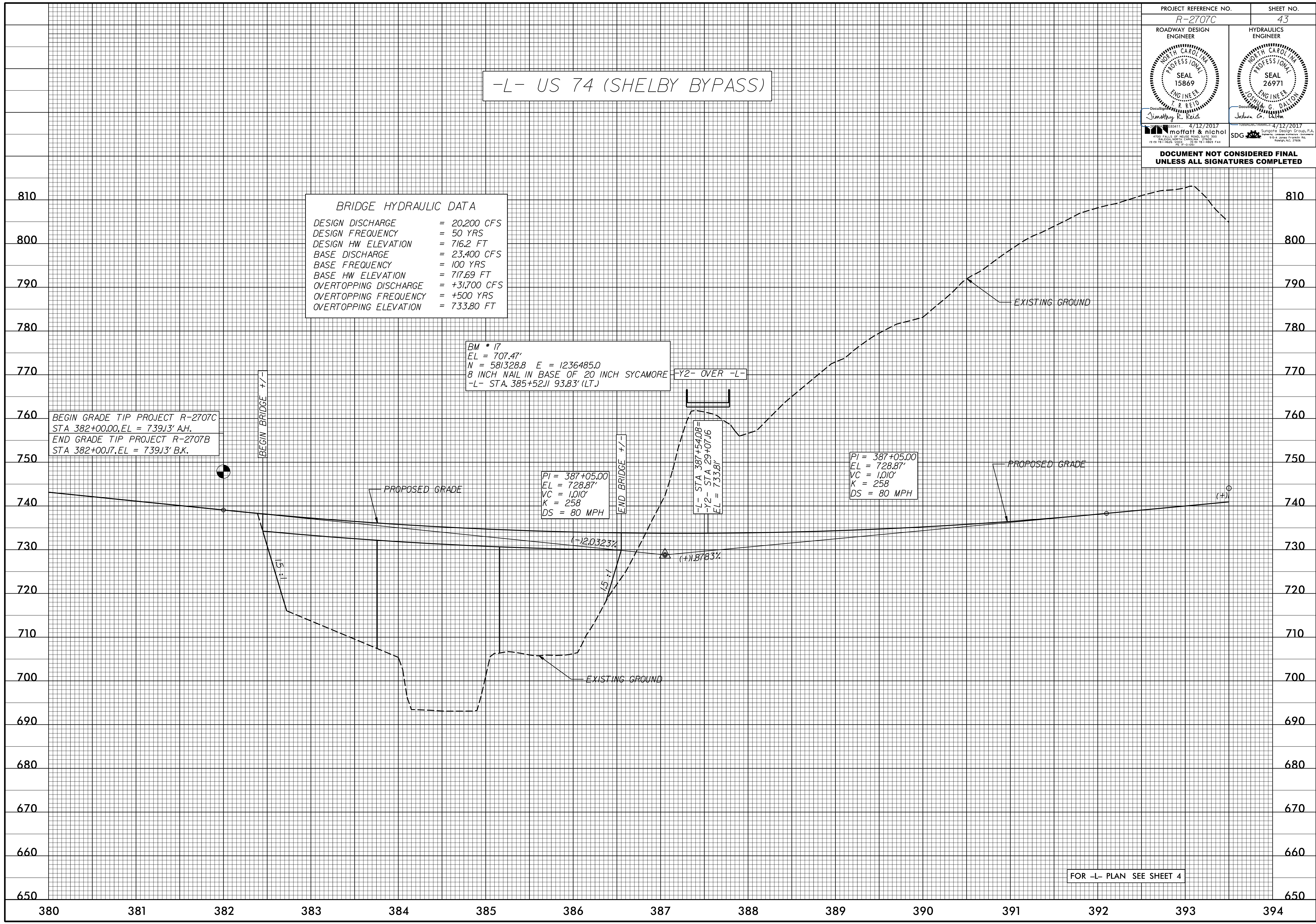
BM \* 17  
EL = 707.47'  
N = 581328.8 E = 1236485.0  
8 INCH NAIL IN BASE OF 20 INCH SYCAMORE  
-L- STA. 385+52.11 93.83' (LT.)

BEGIN GRADE TIP PROJECT R-2707C  
STA 382+00.00, EL = 739.13' A.H.  
END GRADE TIP PROJECT R-2707B  
STA 382+00.17, EL = 739.13' B.K.

PI = 387+05.00  
EL = 728.87'  
VC = 1,010'  
K = 258  
DS = 80 MPH

-L- STA 387+54.08 =  
-Y2- STA 29+07.16  
EL = 733.81'

PI = 387+05.00  
EL = 728.87'  
VC = 1,010'  
K = 258  
DS = 80 MPH



FOR -L- PLAN SEE SHEET 4