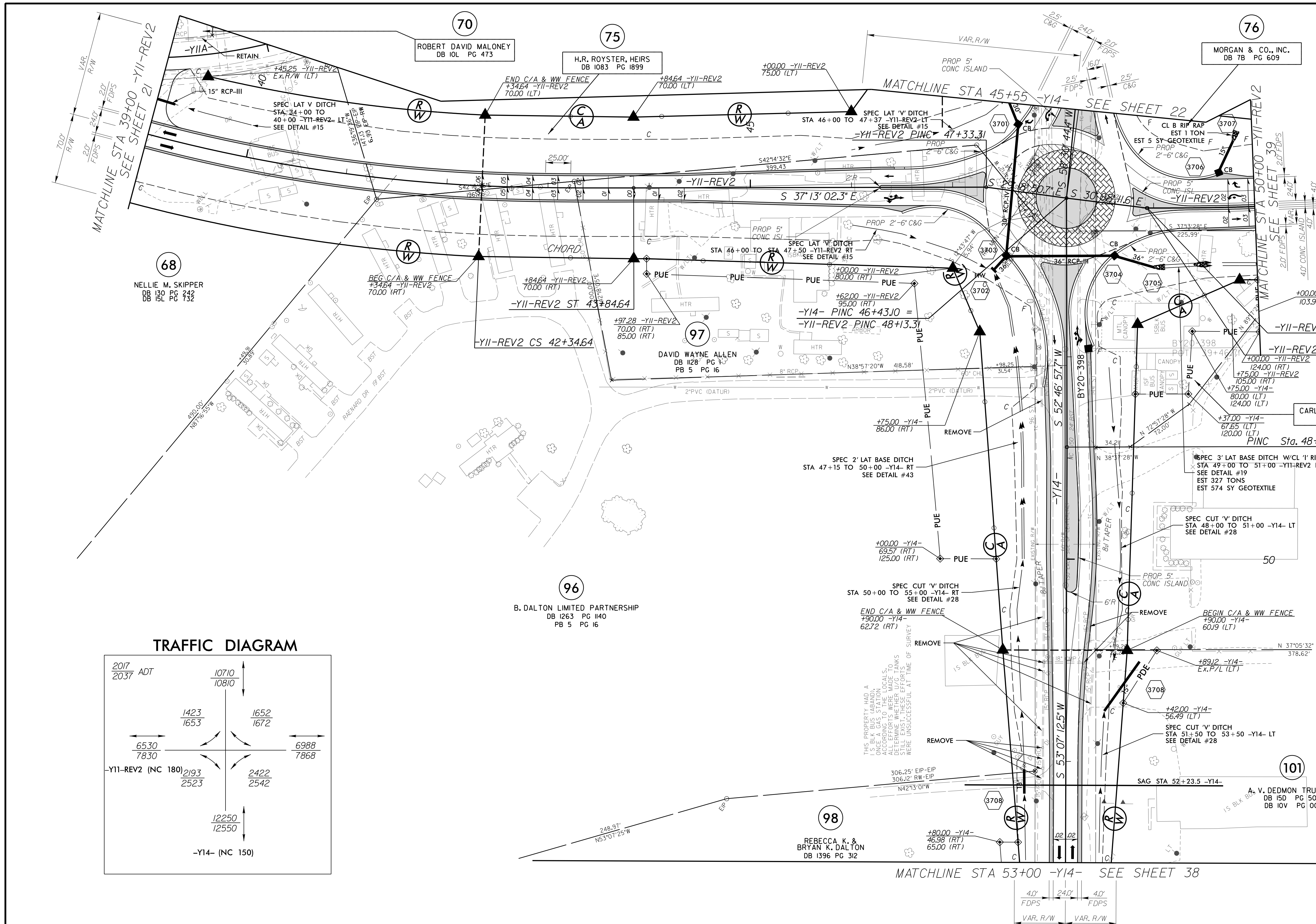
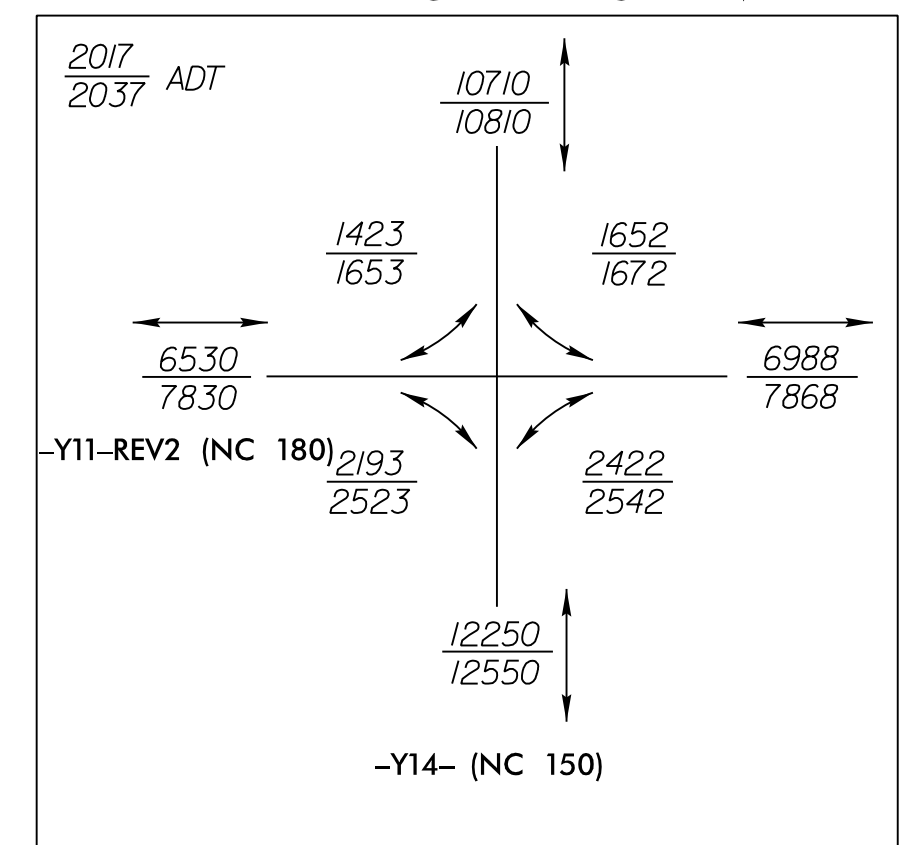


PROJECT REFERENCE NO. R-2707C		SHEET NO. 37	
RW SHEET NO.		HYDRAULICS ENGINEER	
ROADWAY DESIGN ENGINEER		HYDRAULICS ENGINEER	
DOCUMENT NOT CONSIDERED FINAL UNLESS ALL SIGNATURES COMPLETED			



TRAFFIC DIAGRAM



-Y11-REV2				-Y11A-	
PI Sta 40+02.53	PIs Sta 42+84.65	PIs Sta 50+27.39	PI Sta 51+86.72	PI Sta 38+50.38	
$\Delta = 17^{\circ}10'47.2''$ (LT)	$\Theta_s = 2^{\circ}45'16.6''$	$\Theta_s = 7^{\circ}32'20.1''$	$\Delta = 13^{\circ}55'13.1''$ (LT)	$\Delta = 36^{\circ}14'03.9''$ (LT)	
$D = 3^{\circ}40'22.1''$	$L_s = 150.00'$	$L_s = 200.00'$	$D = 7^{\circ}32'20.1''$	$D = 1^{\circ}30'00.0''$	
$L = 467.76'$	$LT = 100.01'$	$LT = 133.45'$	$L = 184.65'$	$L = 315.08'$	
$T = 235.65'$	$ST = 50.01'$	$ST = 66.78'$	$T = 92.78'$	$T = 163.01'$	
$R = 1,560.00'$			$R = 760.00'$	$R = 498.22'$	
$SE = .06$			$SE = .08$		

FOR DITCH DETAILS SEE SHEETS 2D-1 AND 2D-2
FOR ROUNDABOUT DETAIL SEE SHEET 2B-7
FOR -Y11-REV2 PROFILE SEE SHEET 66 & 67
FOR -Y14- PROFILE SEE SHEET 70