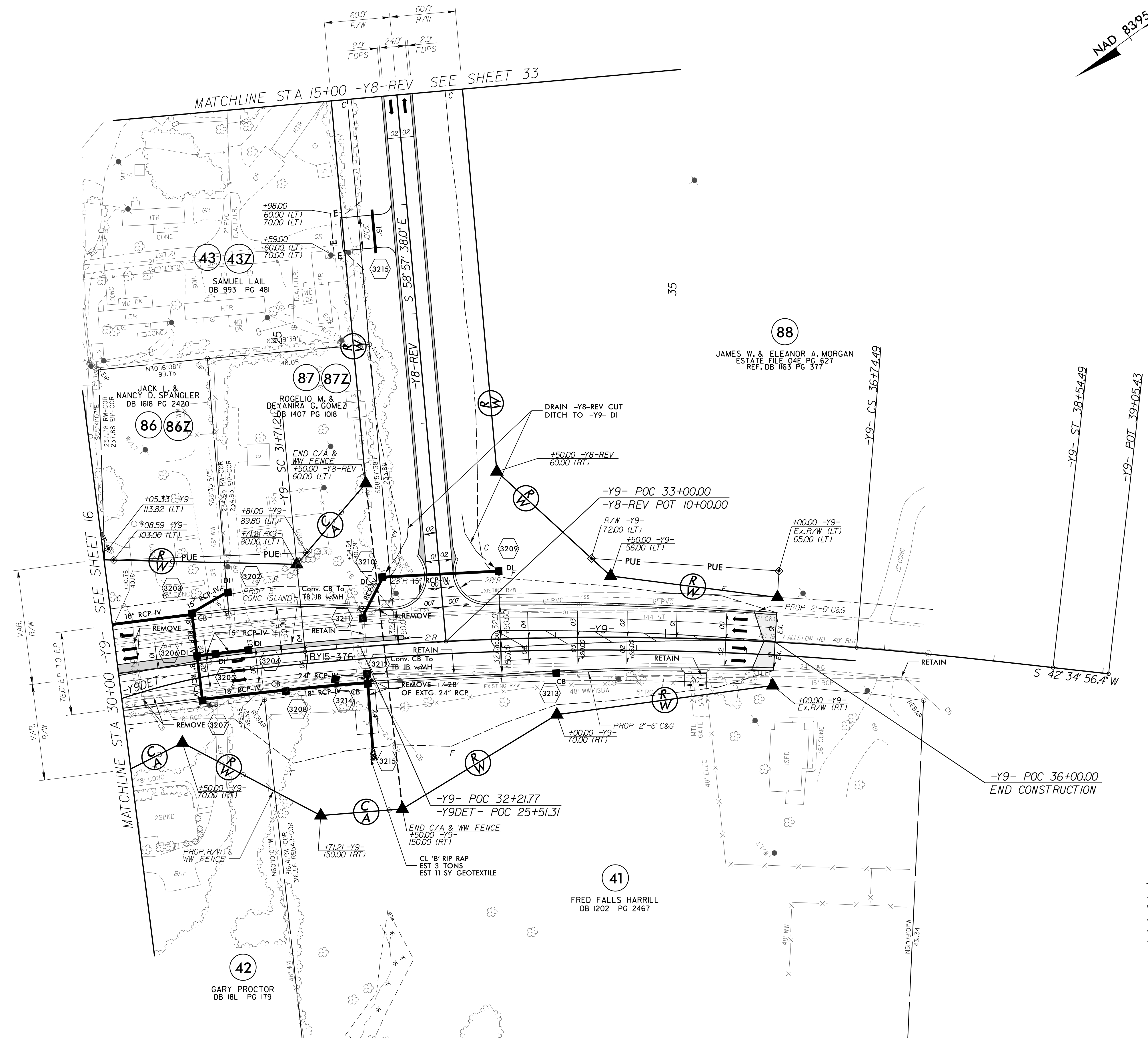
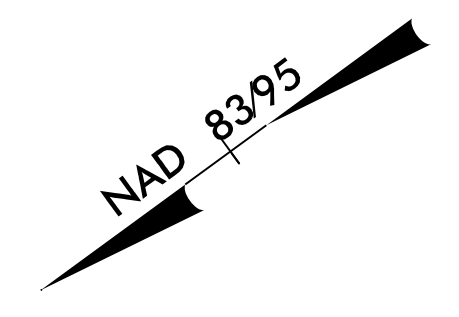


PROJECT REFERENCE NO. <i>R-2707C</i>	SHEET NO. 32
RW SHEET NO.	
ROADWAY DESIGN ENGINEER	HYDRAULICS ENGINEER
<p>DOCUMENT NOT CONSIDERED FINAL UNLESS ALL SIGNATURES COMPLETED</p>	



-Y9- DETOUR
 PI Sta 23+74.52
 $\Delta = 25^{\circ}07'00.2''$ (RT)
 D = 6' 59" 14.2"
 L = 359.46'
 T = 182.67'
 R = 820.00'

-Y9-		
PIs Sta 31+11.21	PI Sta 34+23.50	PIs Sta 37+34.50
$\Theta_s = 1^{\circ}48'00.0''$	$\Delta = 10^{\circ}03'56.4''$ (RT)	$\Theta_s = 1^{\circ}48'00.0''$
Ls = 180.00'	D = 2' 00' 00.0"	Ls = 180.00'
LT = 120.01'	L = 503.28'	LT = 120.01'
ST = 60.01'	T = 252.29'	ST = 60.01'
	R = 2,864.79'	
	SE = .04	
	RO = 180'	

FOR DITCH DETAILS SEE SHEETS 2D-1 AND 2D-2
 FOR -Y9- DETOUR DETAILS SEE SHEET 2B-2
 FOR -Y8-REV PROFILE SEE SHEET 59
 FOR -Y9- PROFILE SEE SHEET 60