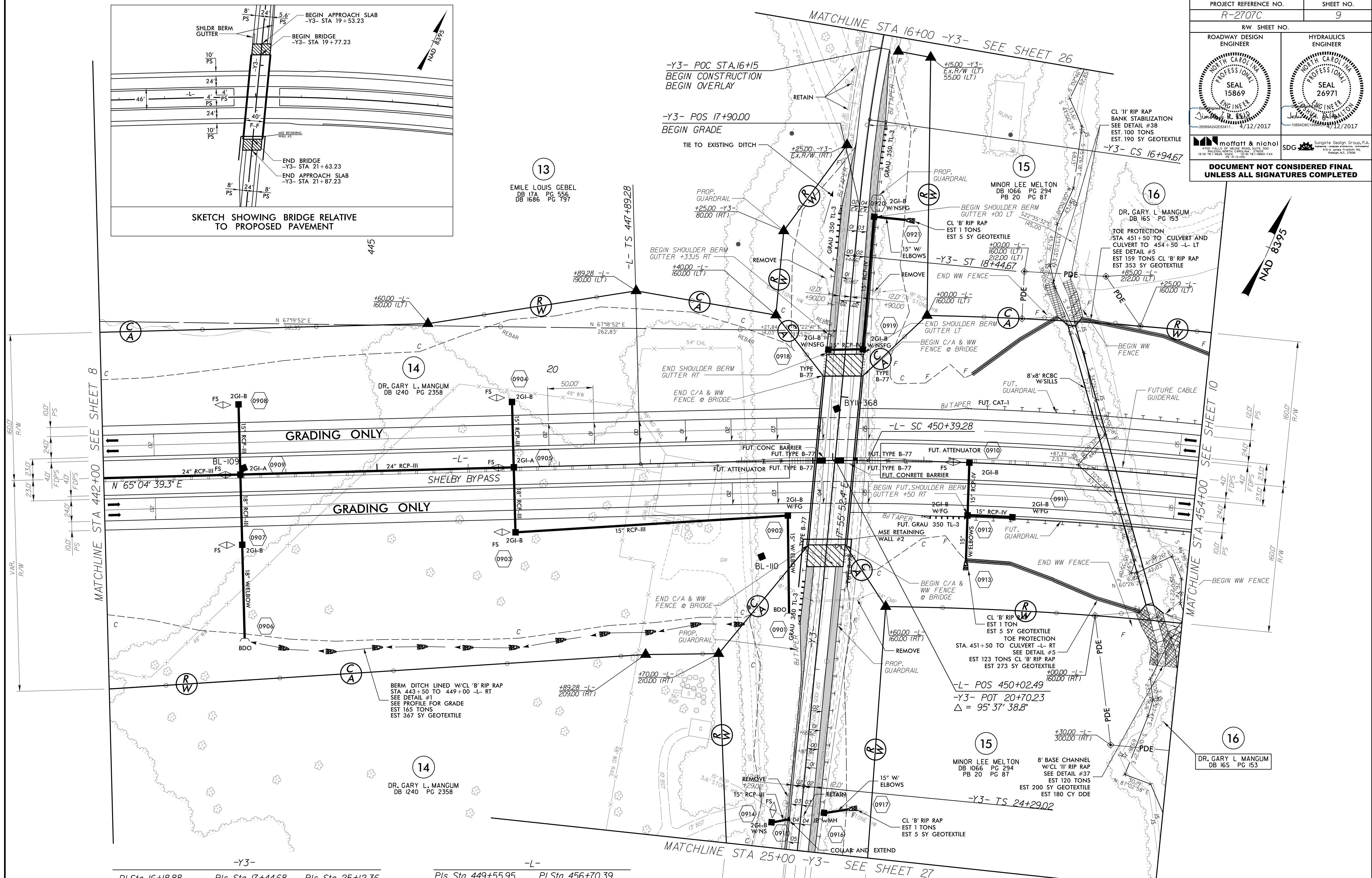
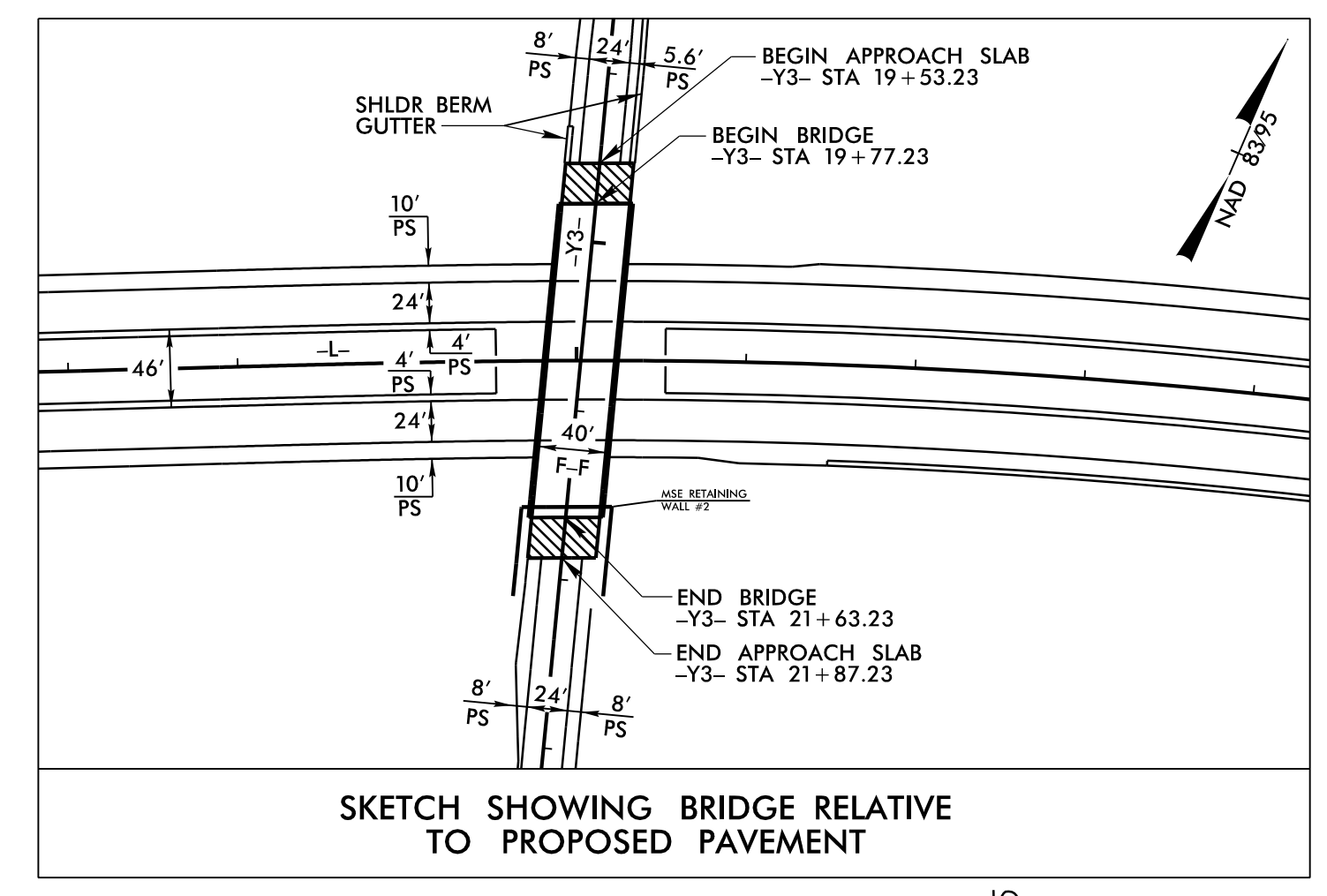


PROJECT REFERENCE NO. R-2707C		SHEET NO. 9	
RW SHEET NO.			
ROADWAY DESIGN ENGINEER		HYDRAULICS ENGINEER	
DOCUMENT NOT CONSIDERED FINAL UNLESS ALL SIGNATURES COMPLETED			



-Y3-			-L-		
PI Sta 16+18.88	PIs Sta 17+44.68	PIs Sta 25+12.36	PIs Sta 449+55.95	PI Sta 456+70.39	
$\Delta = 5^{\circ} 03' 21.5" (LT)$	$\Delta s = 2^{\circ} 30' 00.0"$	$\Delta s = 1^{\circ} 52' 30.0"$	$\Delta s = 1^{\circ} 52' 30.0"$	$\Delta = 18^{\circ} 45' 49.5" (RT)$	
$D = 3^{\circ} 20' 00.0"$	$Ls = 150.00'$	$Ls = 125.00'$	$Ls = 250.00'$	$D = 1^{\circ} 30' 00.0"$	
$L = 151.68'$	$LT = 100.01'$	$LT = 83.34'$	$LT = 166.68'$	$L = 1,250.92'$	
$T = 75.89'$	$ST = 50.01'$	$ST = 41.67'$	$ST = 83.34'$	$T = 631.11'$	
$R = 1,718.87'$				$R = 3,819.72'$	
				$SE = .05$	
				$RO = 250'$	

FOR DITCH DETAILS SEE SHEETS 2D-1 AND 2D-2
 FOR -L- PROFILE SEE SHEET 46
 FOR -Y3- PROFILE SEE SHEET 56
 FOR WALL PLANS SEE
 FOR STRUCTURE PLANS SEE