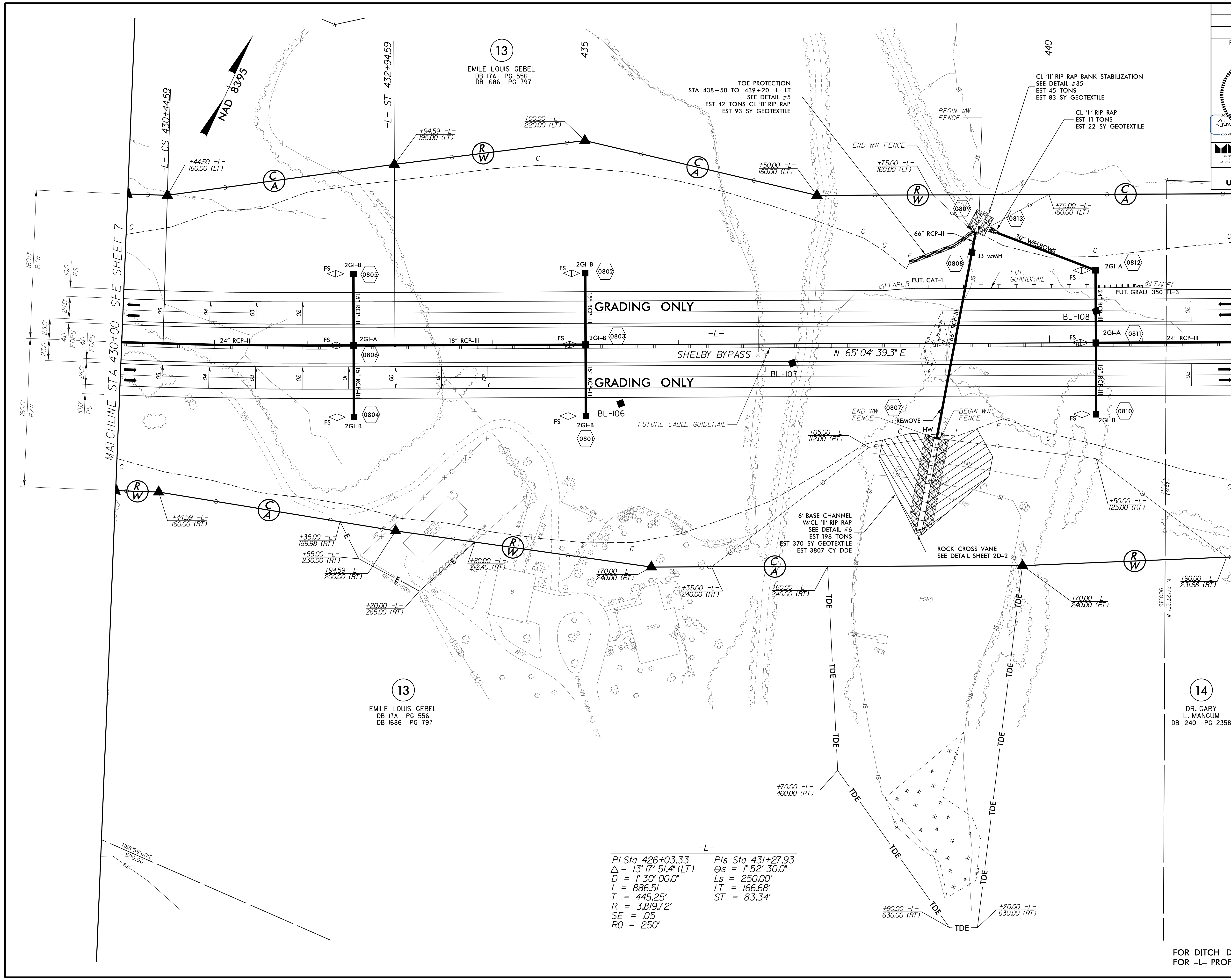


PROJECT REFERENCE NO. R-2707C		SHEET NO. 8	
RW SHEET NO.		HYDRAULICS ENGINEER	
ROADWAY DESIGN ENGINEER		SEAL 15869	
DOCUMENT NOT CONSIDERED FINAL UNLESS ALL SIGNATURES COMPLETED			



MATCHLINE STA 430+00 SEE SHEET 7

MATCHLINE STA 442+00 SEE SHEET 9

13
EMILE LOUIS GEBEL
DB 17A PG 556
DB 1686 PG 797

13
EMILE LOUIS GEBEL
DB 17A PG 556
DB 1686 PG 797

14
DR. GARY L. MANGUM
DB 1240 PG 2358

-L-
 PI Sta 426+03.33 Pls Sta 431+27.93
 $\Delta = 13^{\circ}17'51.4"$ (LT) $\Theta s = 1^{\circ}52'30.0"$
 $D = 1^{\circ}30'00.0"$ $Ls = 250.00'$
 $L = 886.51'$ $LT = 166.68'$
 $T = 445.25'$ $ST = 83.34'$
 $R = 3,819.72'$
 $SE = .05$
 $RO = 250'$

FOR DITCH DETAILS SEE SHEETS 2D-1 AND 2D-2
FOR -L- PROFILE SEE SHEET 45