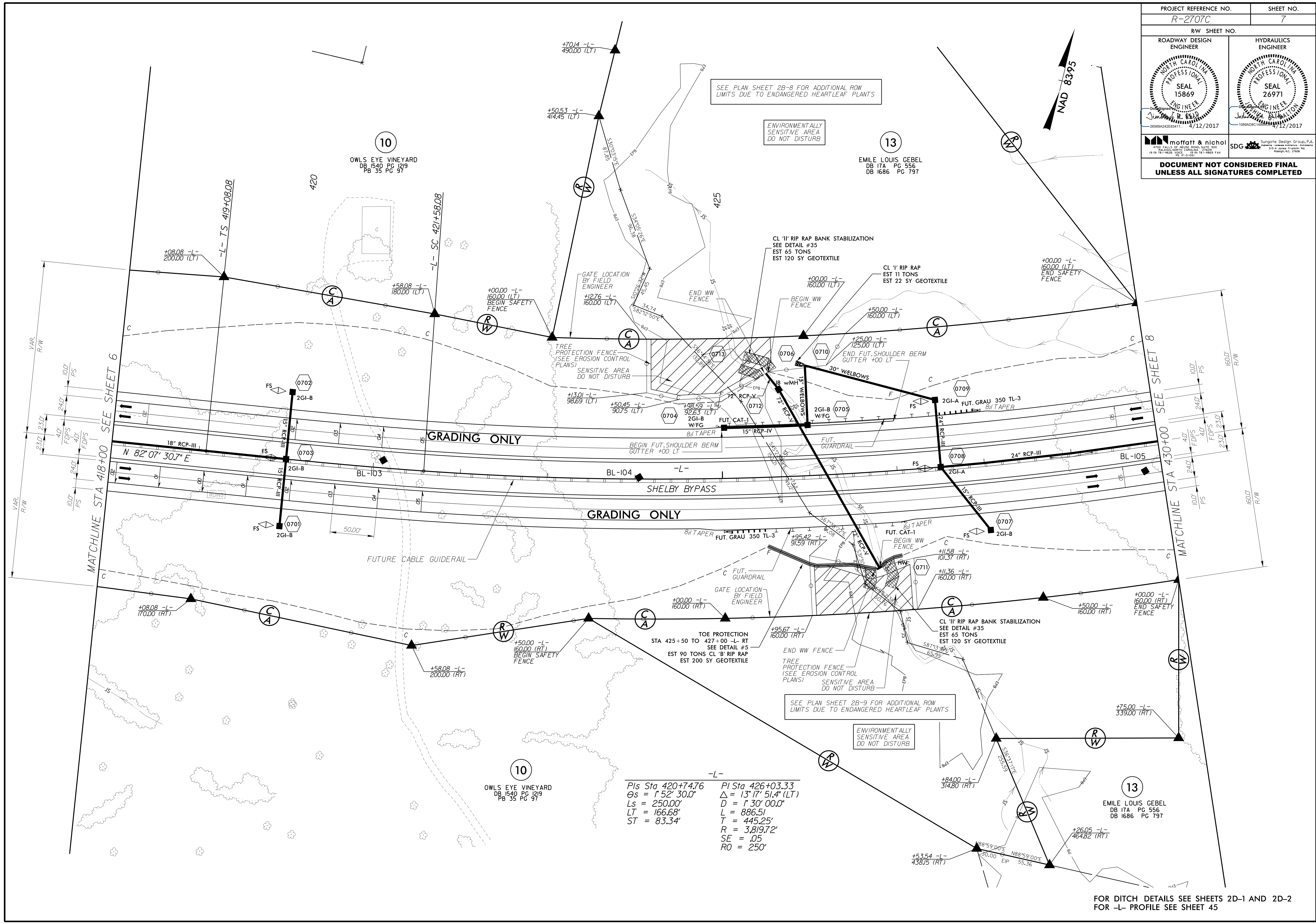


PROJECT REFERENCE NO. R-2707C		SHEET NO. 7	
RW SHEET NO.		HYDRAULICS ENGINEER	
ROADWAY DESIGN ENGINEER		HYDRAULICS ENGINEER	
DOCUMENT NOT CONSIDERED FINAL UNLESS ALL SIGNATURES COMPLETED			



SEE PLAN SHEET 2B-8 FOR ADDITIONAL ROW LIMITS DUE TO ENDANGERED HEARTLEAF PLANTS

ENVIRONMENTALLY SENSITIVE AREA DO NOT DISTURB

SEE PLAN SHEET 2B-9 FOR ADDITIONAL ROW LIMITS DUE TO ENDANGERED HEARTLEAF PLANTS

ENVIRONMENTALLY SENSITIVE AREA DO NOT DISTURB

-L-

Pls Sta 420+74.76	PI Sta 426+03.33
$\Delta s = 1^{\circ} 52' 30.0''$	$\Delta = 13^{\circ} 17' 51.4''$ (LT)
$Ls = 250.00'$	$D = 1^{\circ} 30' 00.0''$
$LT = 166.68'$	$L = 886.51'$
$ST = 83.34'$	$T = 445.25'$
	$R = 3,819.72'$
	$SE = .05$
	$RO = 250'$

FOR DITCH DETAILS SEE SHEETS 2D-1 AND 2D-2
FOR -L- PROFILE SEE SHEET 45