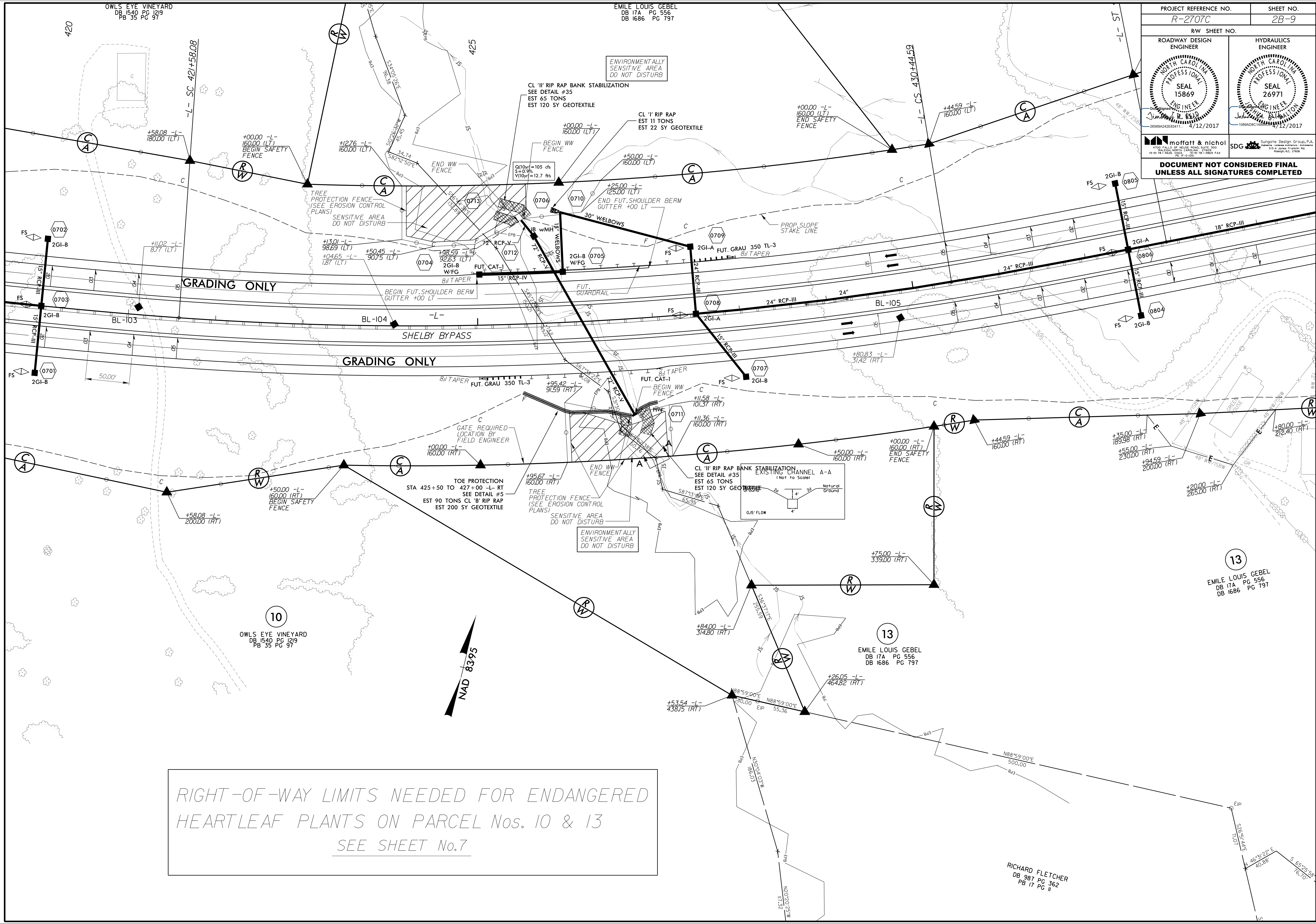
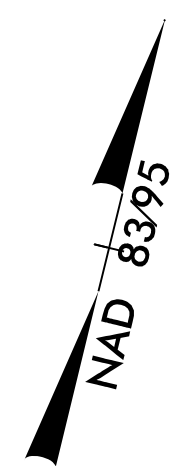


PROJECT REFERENCE NO. R-2707C	SHEET NO. 2B-9
RW SHEET NO.	
ROADWAY DESIGN ENGINEER	HYDRAULICS ENGINEER

**DOCUMENT NOT CONSIDERED FINAL
UNLESS ALL SIGNATURES COMPLETED**



RIGHT-OF-WAY LIMITS NEEDED FOR ENDANGERED
HEARTLEAF PLANTS ON PARCEL Nos. 10 & 13
SEE SHEET No.7



RICHARD FLETCHER
DB 987 PG 362
PB 17 PG II

OWLS EYE VINEYARD
DB 1540 PG 129
PB 35 PG 97

EMILE LOUIS GEBEL
DB 17A PG 556
DB 1686 PG 797

10
OWLS EYE VINEYARD
DB 1540 PG 129
PB 35 PG 97

13
EMILE LOUIS GEBEL
DB 17A PG 556
DB 1686 PG 797

13
EMILE LOUIS GEBEL
DB 17A PG 556
DB 1686 PG 797