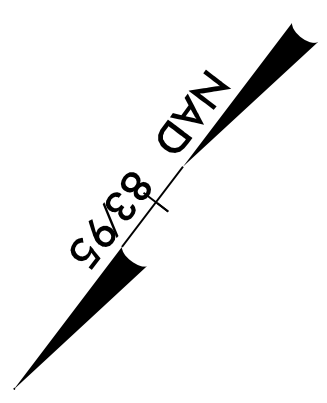
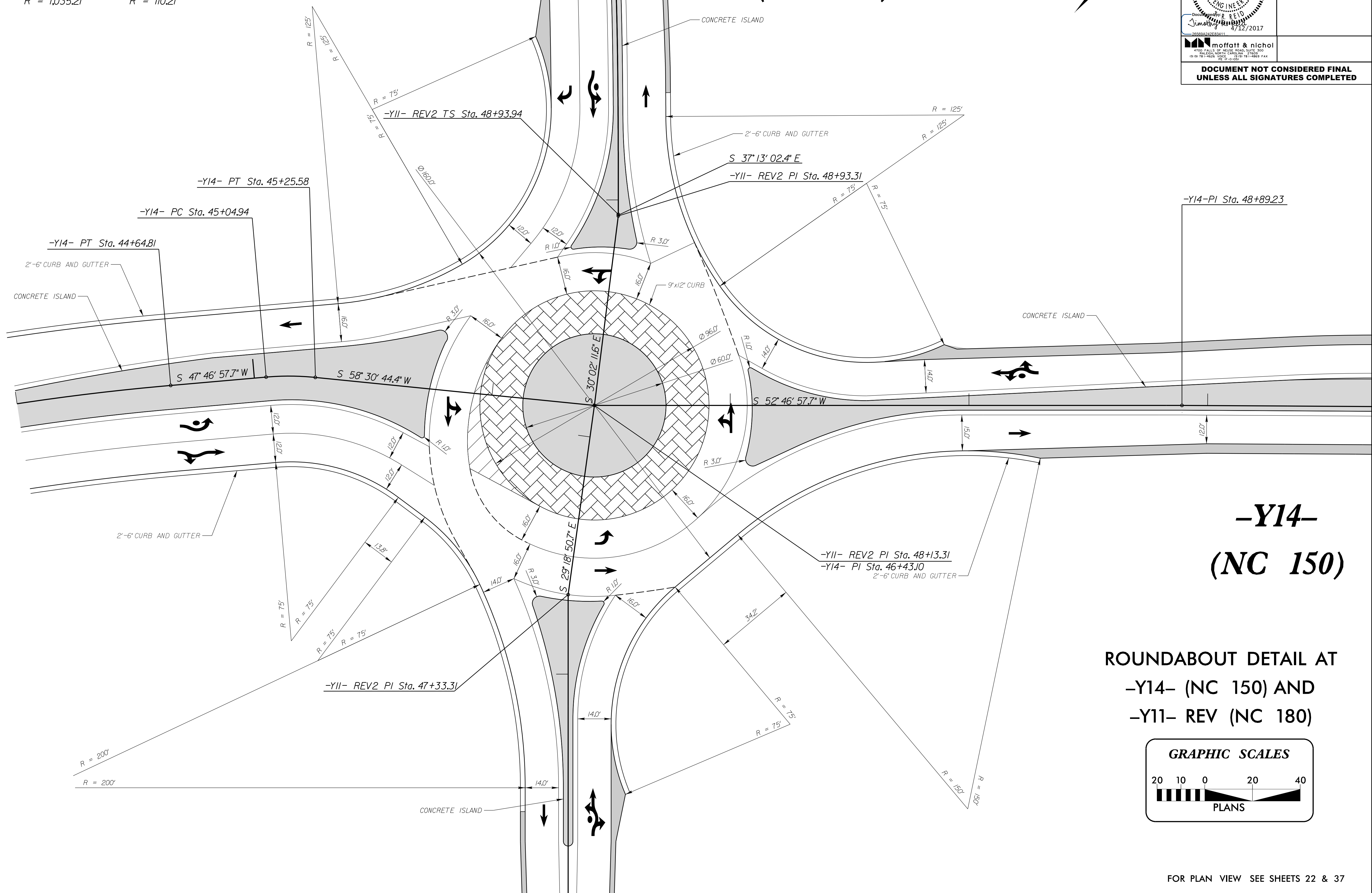


-Y14-	-Y14-	-Y11- REV2
PI Sta 43+99.16	PI Sta 45+15.29	PIs Sta 50+27.39
$\Delta = 7^{\circ} 16' 39.1''$ (RT)	$\Delta = 10^{\circ} 43' 46.7''$ (RT)	$\Theta_s = 7^{\circ} 32' 20.1''$
$D = 5^{\circ} 32' 05.0''$	$D = 5^{\circ} 59' 21.4''$	$L_s = 200.00'$
$L = 131.49'$	$L = 20.64'$	$LT = 133.45'$
$T = 65.83'$	$T = 10.35'$	$ST = 66.78'$
$R = 1,035.21'$	$R = 110.21'$	

-Y11- REV2 (NC 180)



PROJECT REFERENCE NO. <i>R-2707C</i>	SHEET NO. <i>2B-7</i>
RW SHEET NO.	
ROADWAY DESIGN ENGINEER	
DOCUMENT NOT CONSIDERED FINAL UNLESS ALL SIGNATURES COMPLETED	



-Y14- (NC 150)

ROUNDBABOUT DETAIL AT
-Y14- (NC 150) AND
-Y11- REV (NC 180)

