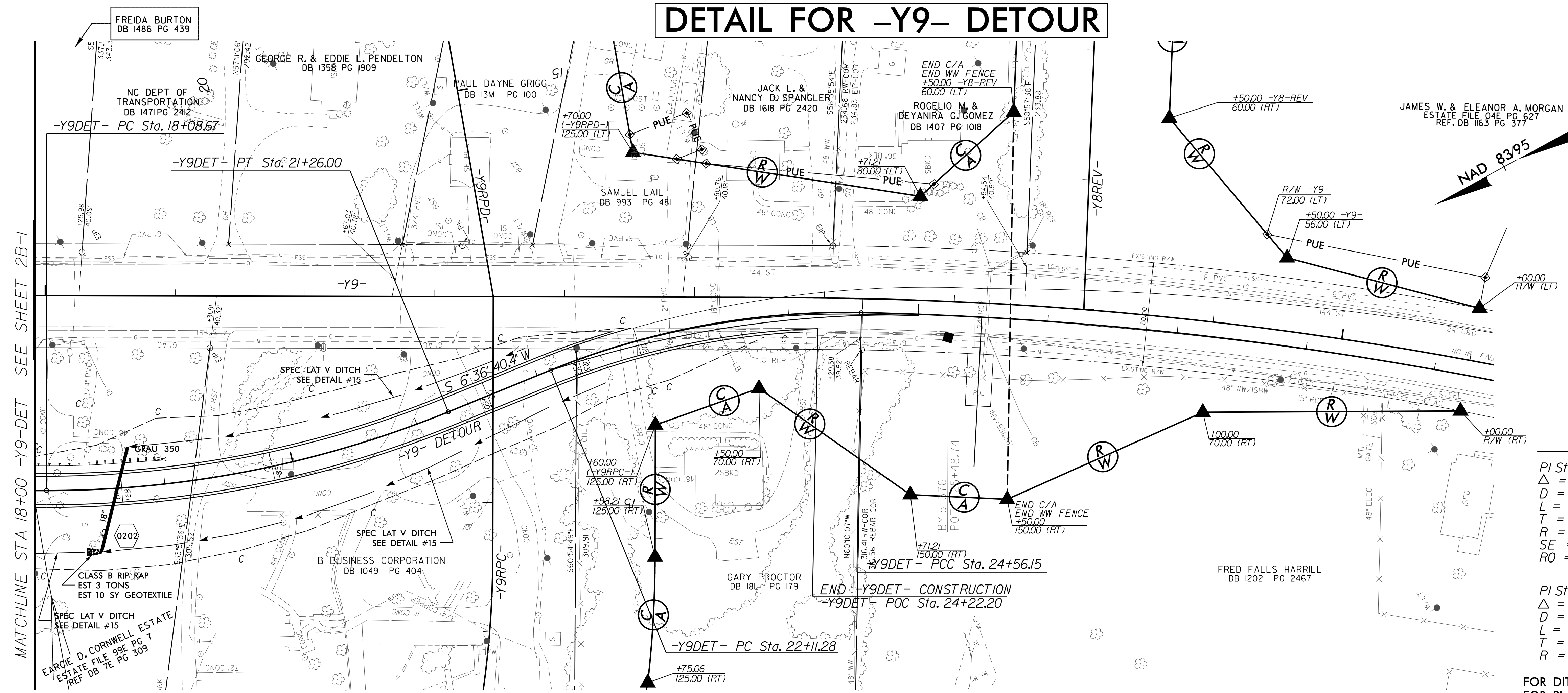


# DETAIL FOR -Y9- DETOUR

PROJECT REFERENCE NO. <i>R-2707C</i>	SHEET NO. <i>2B-2</i>
RW SHEET NO.	
ROADWAY DESIGN ENGINEER	HYDRAULICS ENGINEER
DOCUMENT NOT CONSIDERED FINAL UNLESS ALL SIGNATURES COMPLETED	



Pls Sta 31+11.21  
 $\Delta s = 1' 48'' 00.0''$   
 $Ls = 180.00'$   
 $LT = 120.01'$   
 $ST = 60.01'$

PI Sta 34+23.50  
 $\Delta = 10' 03'' 56.4'' (RT)$   
 $D = 2' 00'' 00.0''$   
 $L = 503.28'$   
 $T = 252.29'$   
 $R = 2,864.79'$   
 $SE = .04$   
 $RO = 90'$

-Y9- DETOUR

PI Sta 19+69.35  
 $\Delta = 22' 10'' 23.3'' (LT)$   
 $D = 6' 59'' 14.2''$   
 $L = 317.34'$   
 $T = 160.68'$   
 $R = 820.00'$   
 $SE = .07$   
 $RO = 50'$

PI Sta 1+75.66  
 $\Delta = 32' 38'' 08.8'' (RT)$   
 $D = 9' 32'' 57.5''$   
 $L = 341.76'$   
 $T = 175.66'$   
 $R = 600.00'$   
 $SE = .03$

PI Sta 27+25.86  
 $\Delta = 11' 01'' 23.8'' (RT)$   
 $D = 2' 00'' 29.8''$   
 $L = 548.90'$   
 $T = 275.30'$   
 $R = 2,853.00'$

FOR DITCH DETAILS SEE SHEETS 2D-1 THRU 2D-4  
 FOR PLAN VIEW SEE SHEETS 16 & 32

