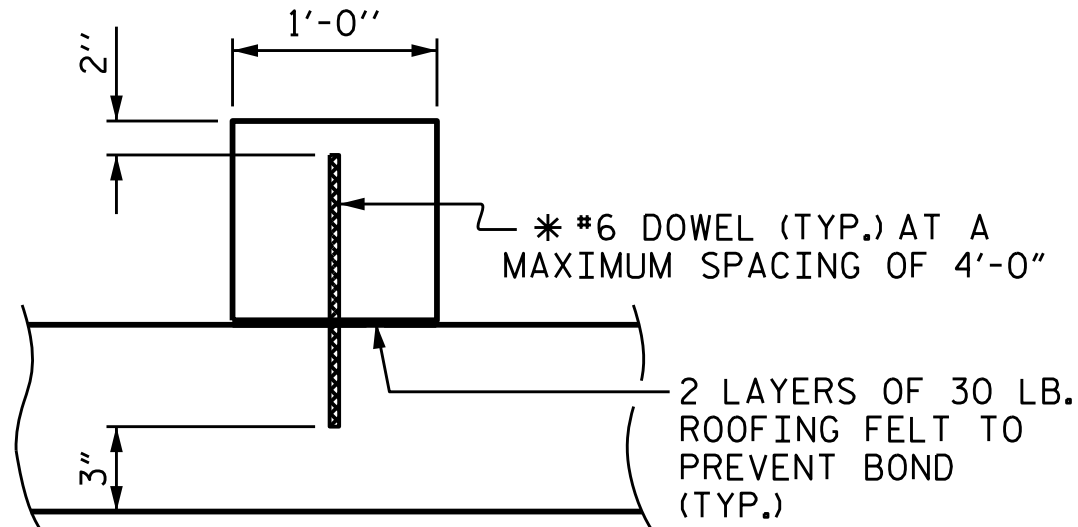


BAR SCHEDULE

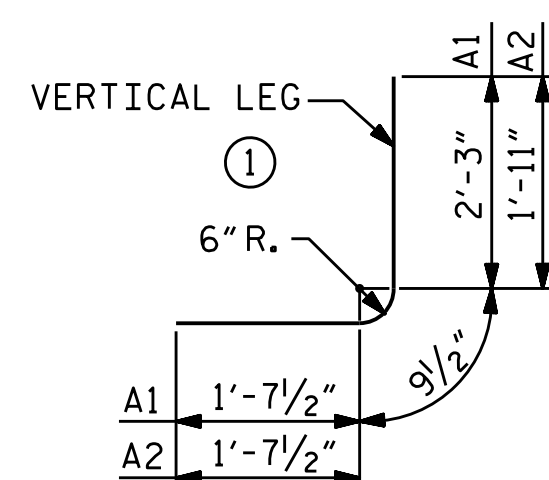
BAR NO.	SIZE	TYPE	LENGTH	WEIGHT	BAR NO.	SIZE	TYPE	LENGTH	WEIGHT	BAR NO.	SIZE	TYPE	LENGTH	WEIGHT	BAR NO.	SIZE	TYPE	LENGTH	WEIGHT				
A100	215	#5	STR	35'-3"	7905	A119	4	#5	STR	11'-6"	48	A214	6	#5	STR	10'-9"	67	A400	248	#5	STR	35'-3"	9118
A101	4	#5	STR	34'-0"	142	A120	4	#5	STR	10'-3"	43	A215	6	#5	STR	9'-0"	56	A401	6	#5	STR	33'-7"	210
A102	4	#5	STR	32'-9"	137	A121	4	#5	STR	9'-0"	38	A216	6	#5	STR	7'-3"	45	A402	6	#5	STR	32'-0"	200
A103	4	#5	STR	31'-6"	131	A122	4	#5	STR	7'-9"	32	A217	6	#5	STR	5'-6"	34	A403	6	#5	STR	30'-4"	190
A104	4	#5	STR	30'-3"	126	A123	4	#5	STR	6'-6"	27	A218	6	#5	STR	3'-9"	23	A404	6	#5	STR	28'-9"	180
A105	4	#5	STR	29'-0"	121	A124	4	#5	STR	5'-3"	22	A219	6	#5	STR	2'-0"	13	A405	6	#5	STR	27'-1"	169
A106	4	#5	STR	27'-9"	116	A125	4	#5	STR	4'-0"	17					A406	6	#5	STR	25'-6"	160		
A107	4	#5	STR	26'-6"	111	A126	4	#5	STR	2'-9"	11	A300	496	#4	STR	18'-4"	6074	A407	6	#5	STR	23'-10"	149
A108	4	#5	STR	25'-3"	105							A301	12	#4	STR	17'-9"	142	A408	6	#5	STR	22'-3"	139
A109	4	#5	STR	24'-0"	100	A200	230	#5	STR	35'-3"	8456	A302	12	#4	STR	16'-11"	135	A409	6	#5	STR	20'-7"	129
A110	4	#5	STR	22'-9"	95	A201	6	#5	STR	33'-6"	210	A303	12	#4	STR	16'-1"	129	A410	6	#5	STR	19'-0"	119
A111	4	#5	STR	21'-6"	90	A202	6	#5	STR	31'-9"	199	A304	6	#4	STR	28'-9"	115	A411	6	#5	STR	17'-4"	108
A112	4	#5	STR	20'-3"	84	A203	6	#5	STR	30'-0"	188	A305	6	#4	STR	27'-1"	109	A412	6	#5	STR	15'-9"	99
A113	4	#5	STR	19'-0"	79	A204	6	#5	STR	28'-3"	177	A306	6	#4	STR	25'-6"	102	A413	6	#5	STR	14'-1"	88
A114	4	#5	STR	17'-9"	74	A205	6	#5	STR	26'-6"	166	A307	6	#4	STR	23'-10"	96	A414	6	#5	STR	12'-6"	78
A115	4	#5	STR	16'-6"	69	A206	6	#5	STR	24'-9"	155	A308	6	#4	STR	22'-3"	89	A415	6	#5	STR	10'-10"	68
A116	4	#5	STR	15'-3"	64	A207	6	#5	STR	23'-0"	144	A309	6	#4	STR	20'-7"	82	A416	6	#5	STR	9'-3"	58
A117	4	#5	STR	14'-0"	58	A208	6	#5	STR	21'-3"	133	A310	6	#4	STR	19'-0"	76	A417	6	#5	STR	7'-7"	47
A118	4	#5	STR	12'-9"	53	A209	6	#5	STR	19'-6"	122	A311	6	#4	STR	17'-4"	69	A418	6	#5	STR	6'-0"	38
						A210	6	#5	STR	17'-9"	111	A312	6	#4	STR	15'-9"	63	A419	6	#5	STR	4'-4"	27
						A211	6	#5	STR	16'-0"	100	A313	6	#4	STR	14'-1"	56	A420	6	#5	STR	2'-9"	17
						A212	6	#5	STR	14'-3"	89	A314	6	#4	STR	12'-6"	50						
						A213	6	#5	STR	12'-6"	78	A315	6	#4	STR	10'-10"	43	A1	628	#4	1	4'-8"	1958
												A316	6	#4	STR	9'-3"	37	A2	628	#4	1	4'-4"	1818
												A317	6	#4	STR	7'-7"	30						
												A318	6	#4	STR	6'-0"	24	B1	340	#4	STR	10'-4"	2347
												A319	6	#4	STR	4'-4"	17	B2	628	#4	STR	8'-4"	3496
												A320	6	#4	STR	2'-9"	11	B3	680	#4	STR	10'-4"	4694



SECTION THROUGH SILL

* DOWELS MAY BE PUSHED INTO GREEN CONCRETE AFTER SLAB HAS BEEN FLOAT FINISHED.

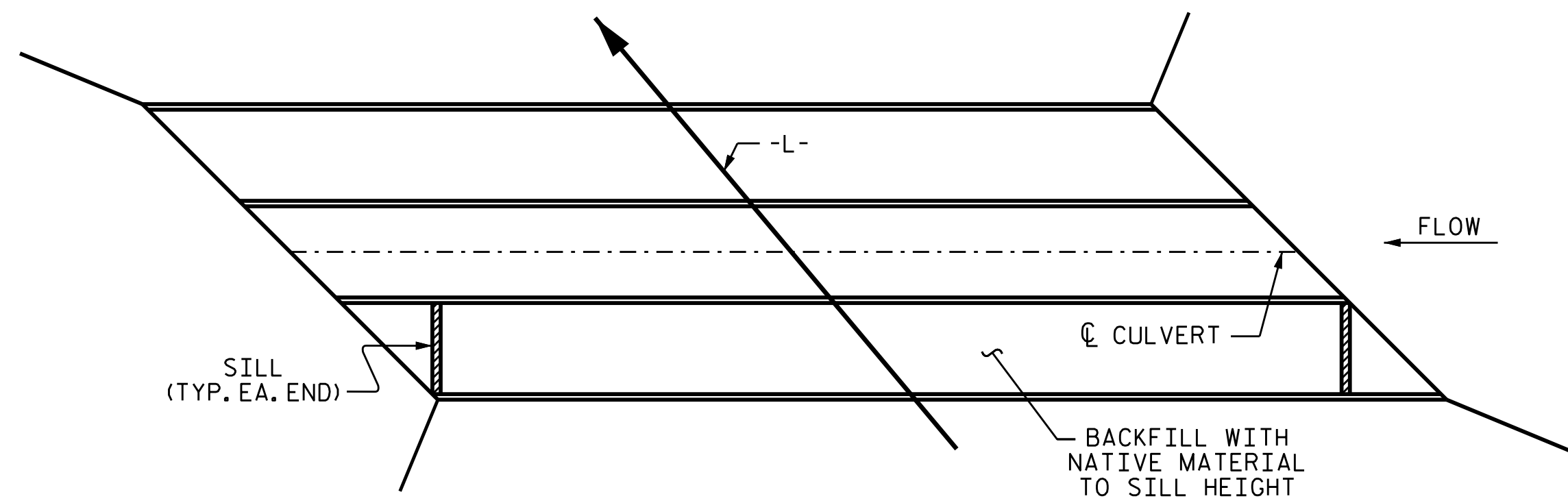
BAR TYPE



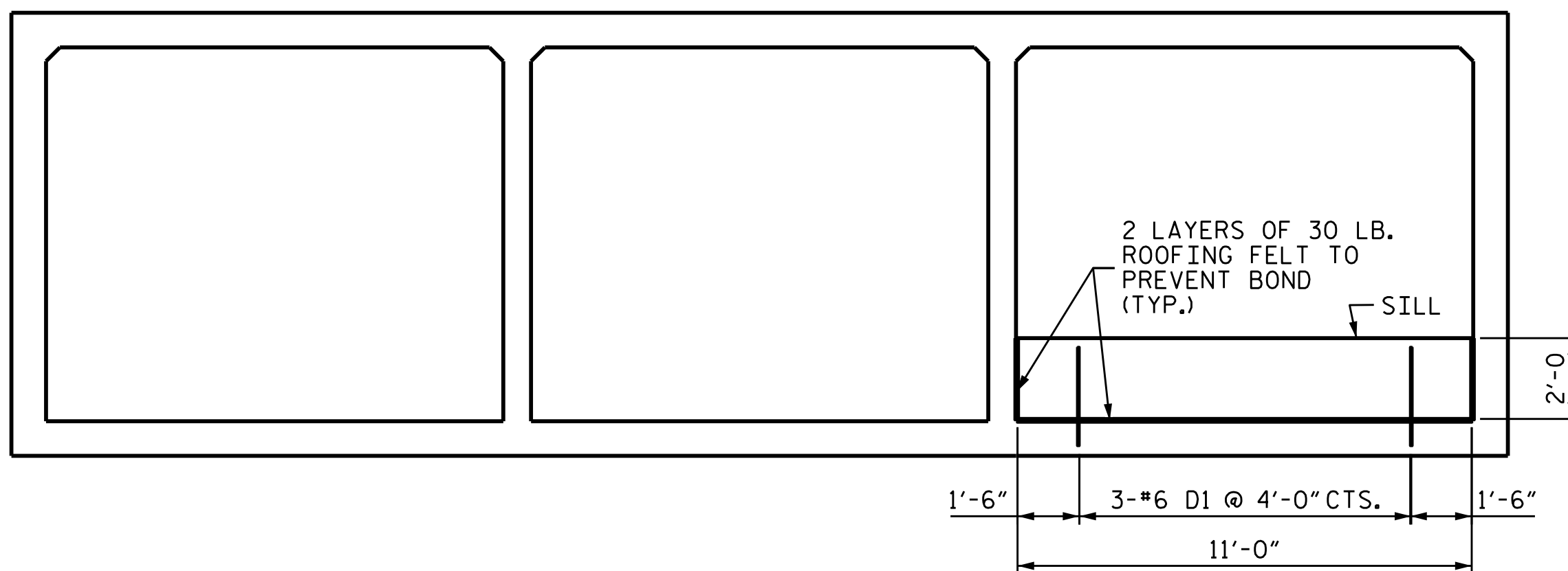
BAR DIMENSIONS ARE OUT TO OUT

SPLICE LENGTH CHART

BAR	SIZE	LENGTH
A200	#5	1'-9"
A300	#4	1'-5"
A400	#5	1'-9"
B1	#4	1'-5"
B3	#4	1'-5"
C1	#4	1'-11"



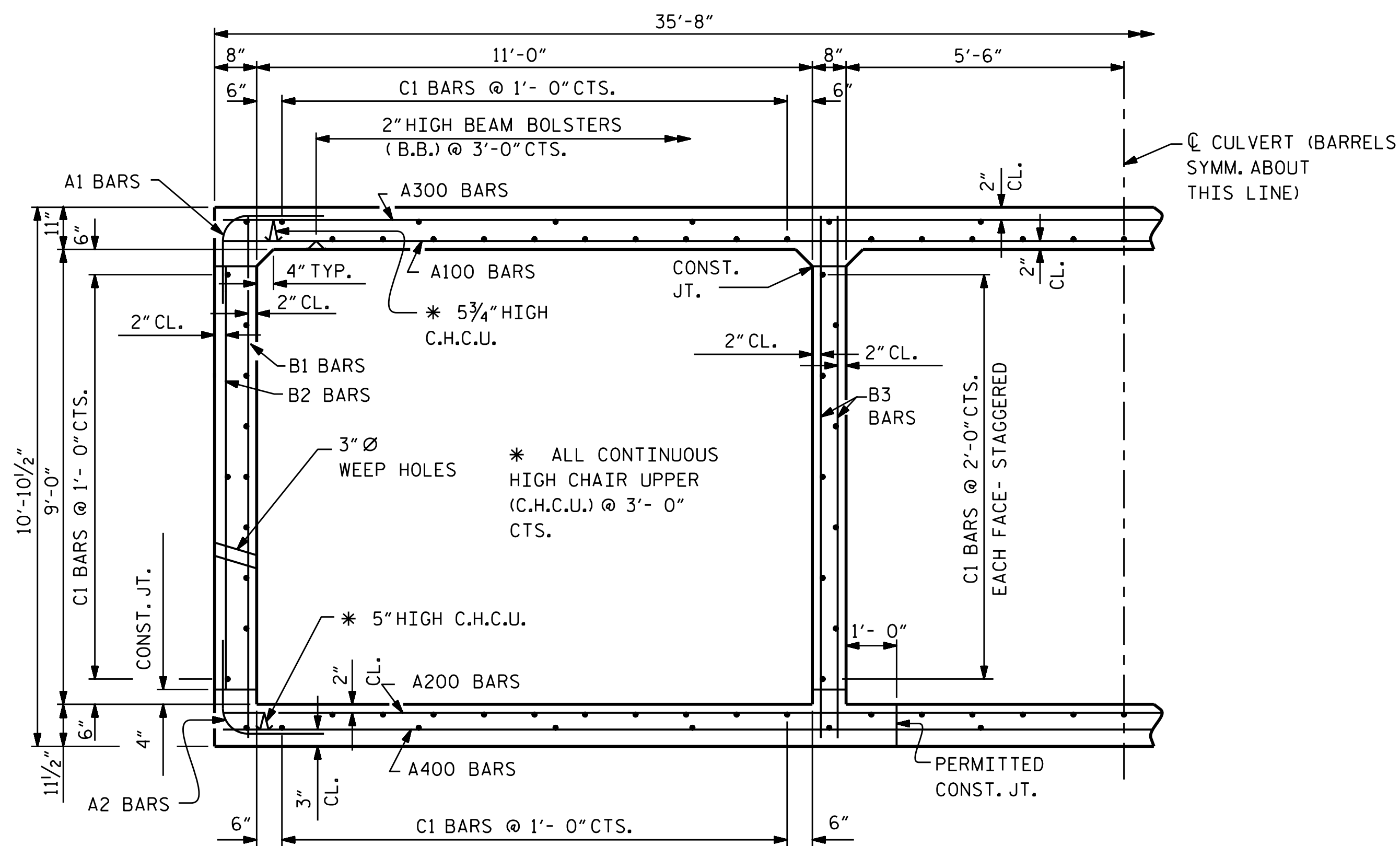
PLAN OF SILL LOCATION



ELEVATION

CULVERT SILL DETAILS

LOOKING UPSTREAM



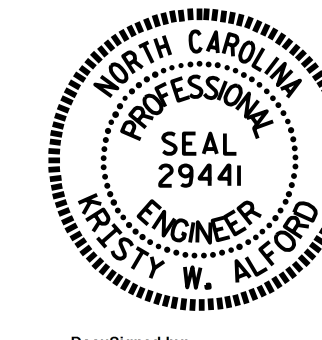
RIGHT ANGLE SECTION OF BARREL

THERE ARE 130 "C" BARS IN SECTION OF BARREL. (7 BAR RUN)

BAR NO.	SIZE	TYPE	LENGTH	WEIGHT	
C1	910	#4	STR	26'-0"	15805
D1	6	#6	STR	2'-6"	23
G1	8	#5	STR	49'-11"	417
S1	12	#8	STR	49'-11"	1599
REINFORCING STEEL =				71,561 LBS	

PROJECT NO. U-3109A
 ALAMANCE COUNTY
 STATION: 96+88.00 -L-

SHEET 3 OF 5



STATE OF NORTH CAROLINA
 DEPARTMENT OF TRANSPORTATION
 RALEIGH
 TRIPLE 11 FT. X 9 FT. CONCRETE BOX CULVERT
 130° SKEW

ASSEMBLED BY : A. SORSENGINH DATE : 4/2014
 CHECKED BY : S. B. WILLIAMS DATE : 4/2014
 DESIGN ENGINEER OF RECORD: A. SORSENGINH DATE : 4/2014

DOCUMENT NOT CONSIDERED FINAL UNLESS ALL SIGNATURES COMPLETED

REVISIONS				SHEET NO. C1-3
NO.	BY:	DATE:	DATE:	
1				TOTAL SHEETS
2				5