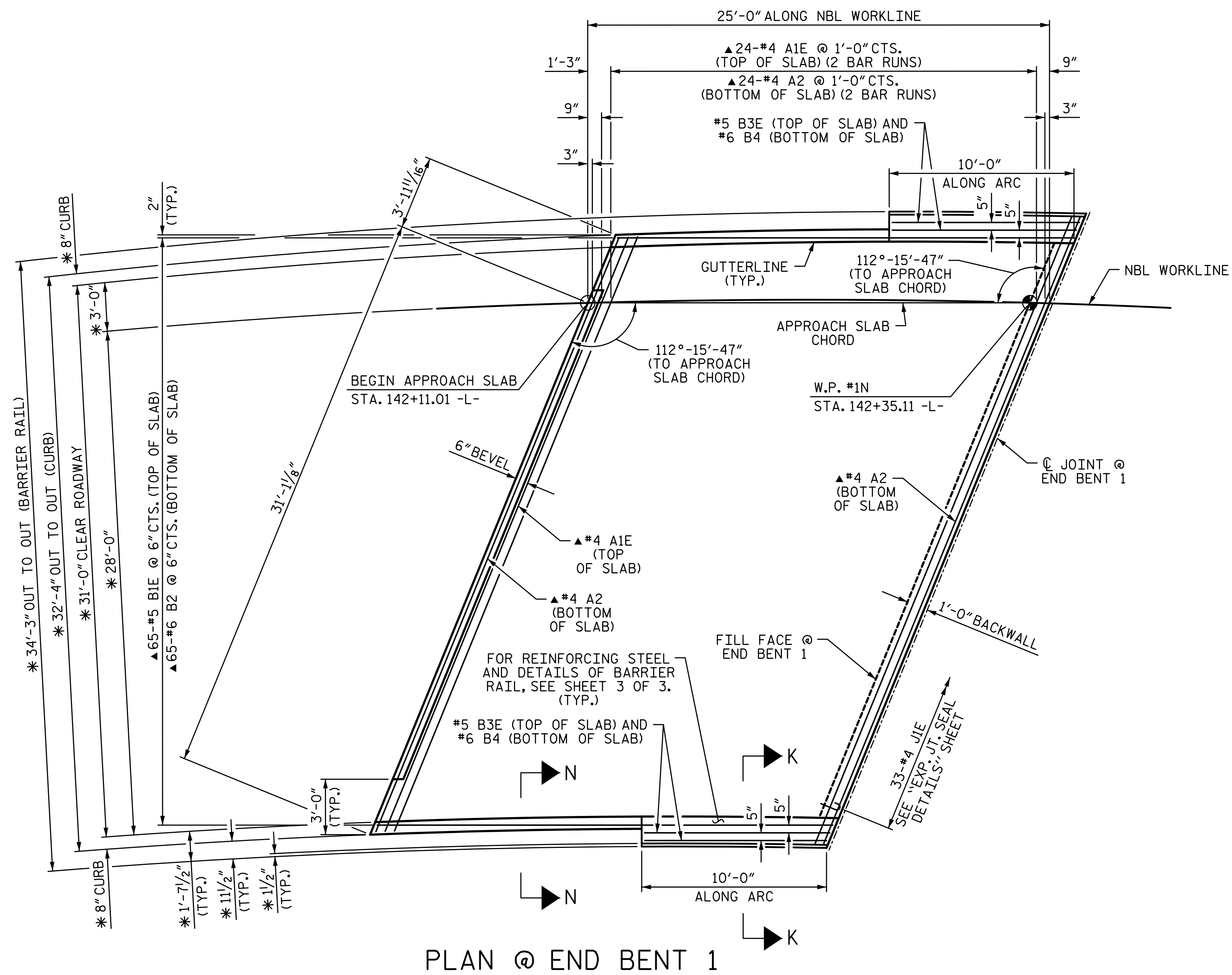
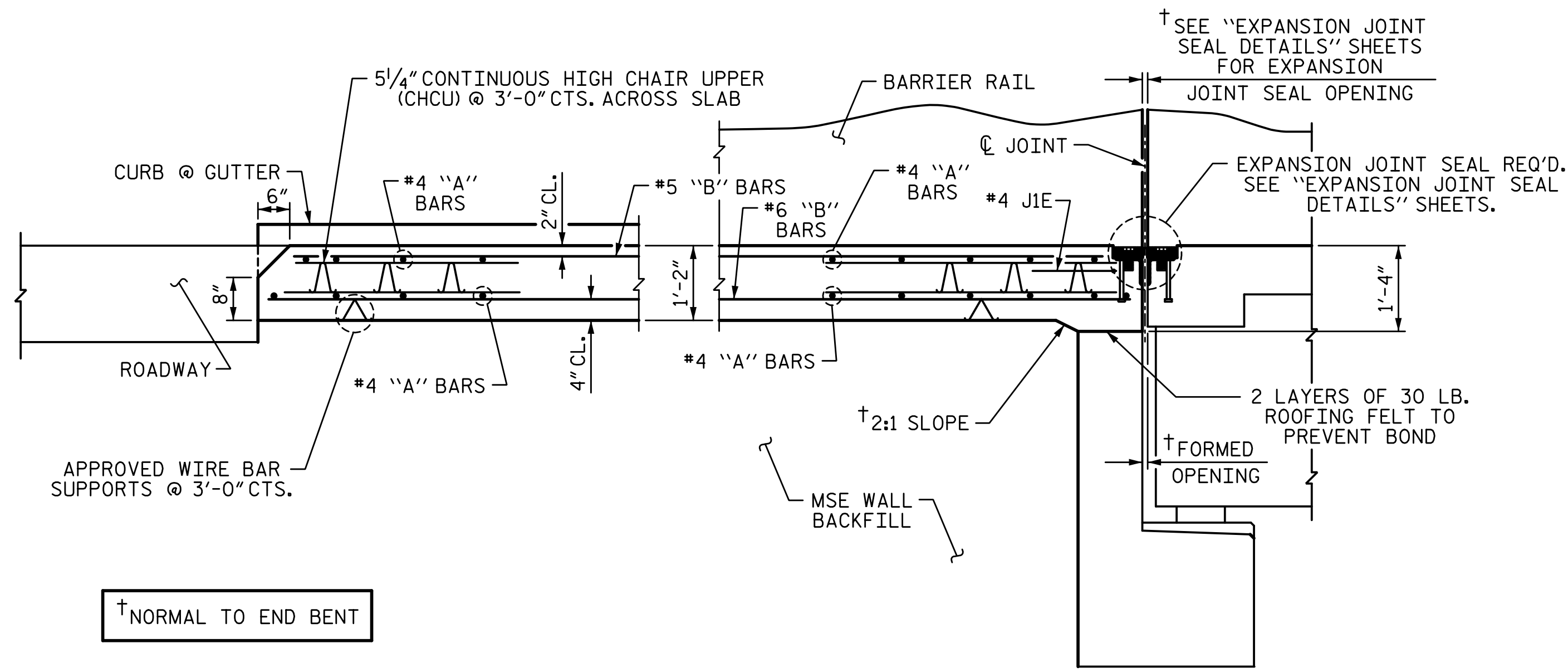


3/22/2017 8:32:14 AM G:\Projects\2014\U-3109A\Structures\Site 2\Site 2-Str 3 Bridge 435 (NBL)\Drawings\Final\403\_U3109A\_smu\_cs.dgn



PLAN @ END BENT 1



SECTION THRU SLAB

BACKWALL RESTRAINTS ON END BENT NOT SHOWN FOR CLARITY.

**NOTES:**

APPROACH SLAB SHALL NOT BE CONSTRUCTED PRIOR TO COMPLETION OF THE BRIDGE DECK.

FOR MSE WALL BACKFILL, SEE SHEET W-4.

AREA BETWEEN THE WINGWALL AND APPROACH SLAB SHALL BE GRADED TO DRAIN THE WATER AWAY FROM THE FILL FACE OF THE BRIDGE AND SHALL BE PAVED. SEE ROADWAY PLANS.

FOR EXPANSION JOINT SEALS, SEE SPECIAL PROVISIONS.

THE QUANTITY OF #4 JIE BARS ON THE BILL OF MATERIAL IS BASED ON 1'-0" CENTERS. JIE BARS SHALL BE PLACED AT EACH VERTICAL STUD ANCHOR BOLT. IN THE EVENT THAT THE NUMBER OF VERTICAL STUD ANCHORS EXCEEDS THE NUMBER OF JIE BARS SPECIFIED, ADDITIONAL JIE BARS WILL NOT BE REQUIRED.

\* RADIAL DIMENSION

▲ "A" BARS ARE TO BE PLACED PARALLEL TO FILL FACE. "B" BARS ARE TO BE PLACED PARALLEL TO THE APPROACH SLAB CHORD.

FOR SECTIONS K-K AND N-N, SEE SHEET 2 OF 3.

**BILL OF MATERIAL**

**APPROACH SLAB AT EB 1**

BAR	NO.	SIZE	TYPE	LENGTH	WEIGHT
A1E	50	4	STR	19'-3"	643
A2	52	4	STR	19'-1"	663
B1E	65	5	STR	23'-9"	1610
B2	65	6	STR	24'-7"	2400
B3E	4	5	STR	9'-6"	40
B4	4	6	STR	9'-6"	57
JIE	33	4	1	1'-5"	31

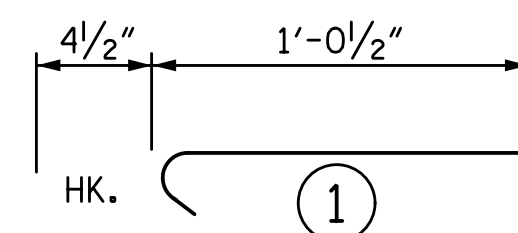
REINFORCING STEEL 3120 LB

EPOXY COATED REINFORCING STEEL 2324 LB

CLASS "AA" CONCRETE BREAKDOWN POUR 1 (SLAB & CURB)\*\* 36.0 CY

"E" INDICATES EPOXY COATED REINFORCING STEEL.

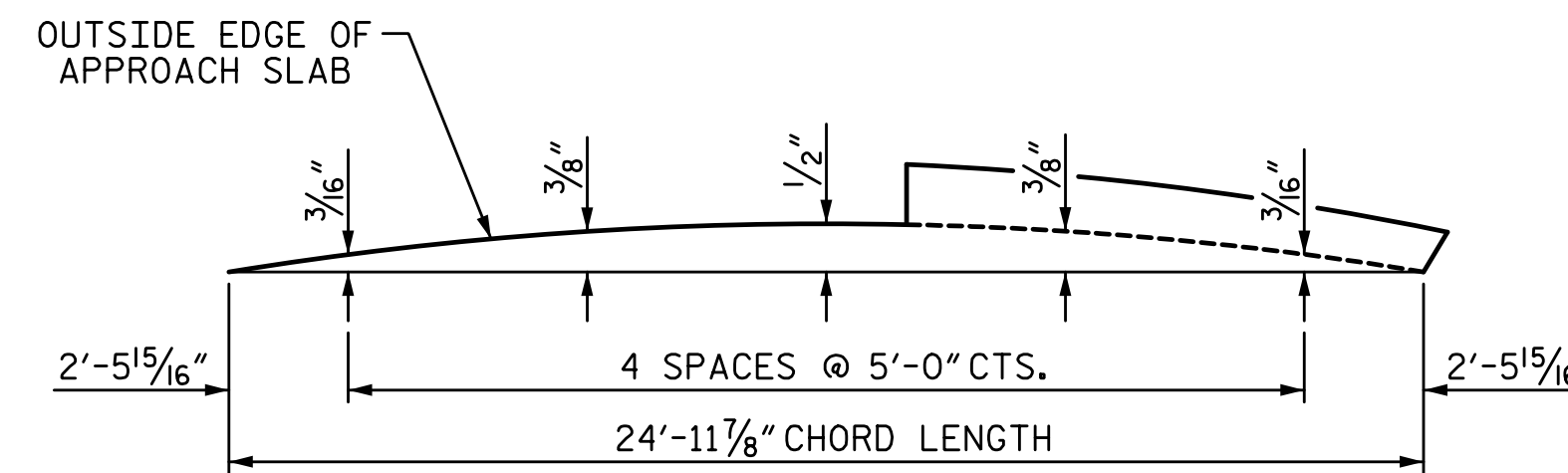
**BAR TYPES**



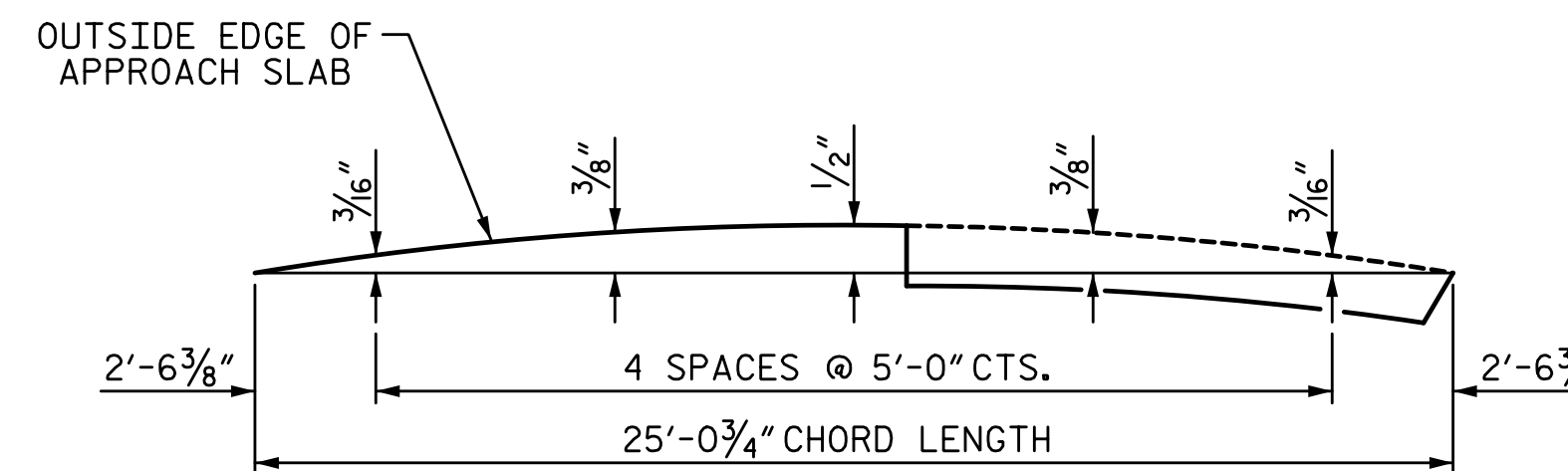
ALL BAR DIMENSIONS ARE OUT TO OUT  
\* QUANTITIES FOR BARRIER RAIL ARE NOT INCLUDED, SEE SHEET 3 OF 3.

**SPLICE LENGTHS**

BAR SIZE	EPOXY COATED	UNCOATED
#4	2'-0"	1'-9"
#5	2'-6"	2'-2"
#6	3'-10"	2'-7"



LEFT SIDE



RIGHT SIDE

**ARC OFFSETS @ END BENT 1**

PROJECT NO. U-3109A  
ALAMANCE COUNTY  
STATION: 146+61.35 -L-

SHEET 1 OF 3

STATE OF NORTH CAROLINA  
DEPARTMENT OF TRANSPORTATION  
RALEIGH

**BRIDGE APPROACH SLAB DETAILS**

(NBL)

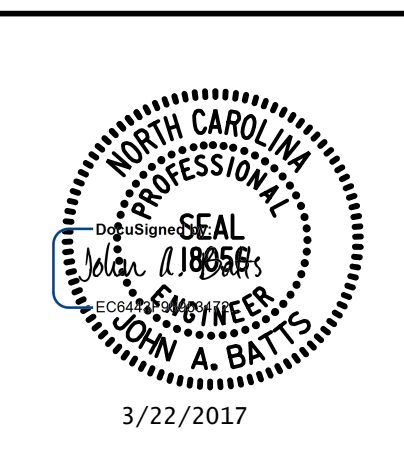
REVISIONS

NO.	BY:	DATE:	NO.	BY:	DATE:
1			3		
2			4		

SHEET NO. S03-51  
TOTAL SHEETS S03-53

PLANS PREPARED BY:

**SE & A**  
SIMPSON ENGINEERS & ASSOCIATES  
5640 Dillard Drive  
Suite 200  
Cary, NC 27518  
(919) 852-0468  
(919) 852-0598 (Fax)  
www.simpsonengr.com  
LICENSURE NO. C-2521



STR. #3