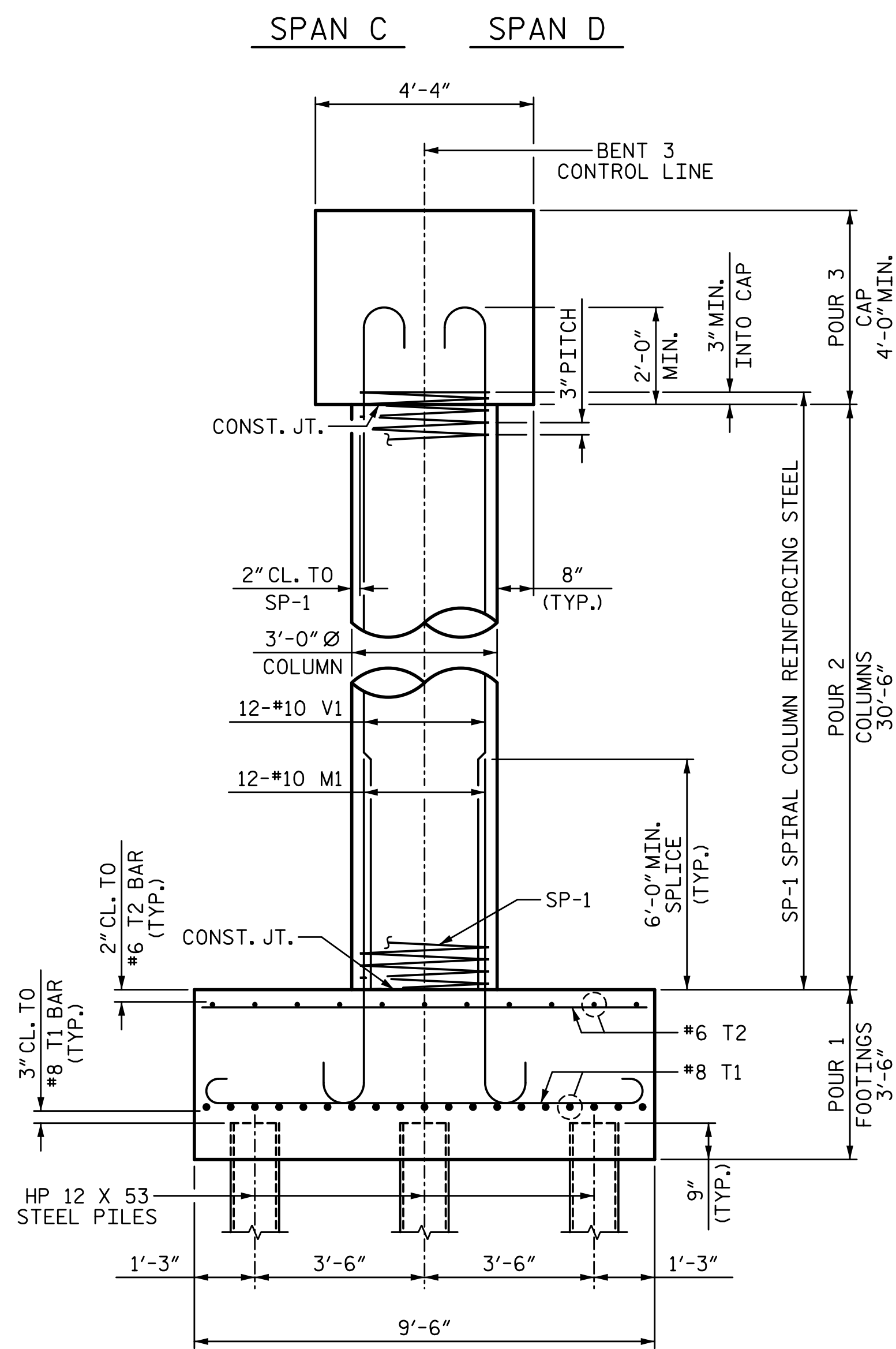
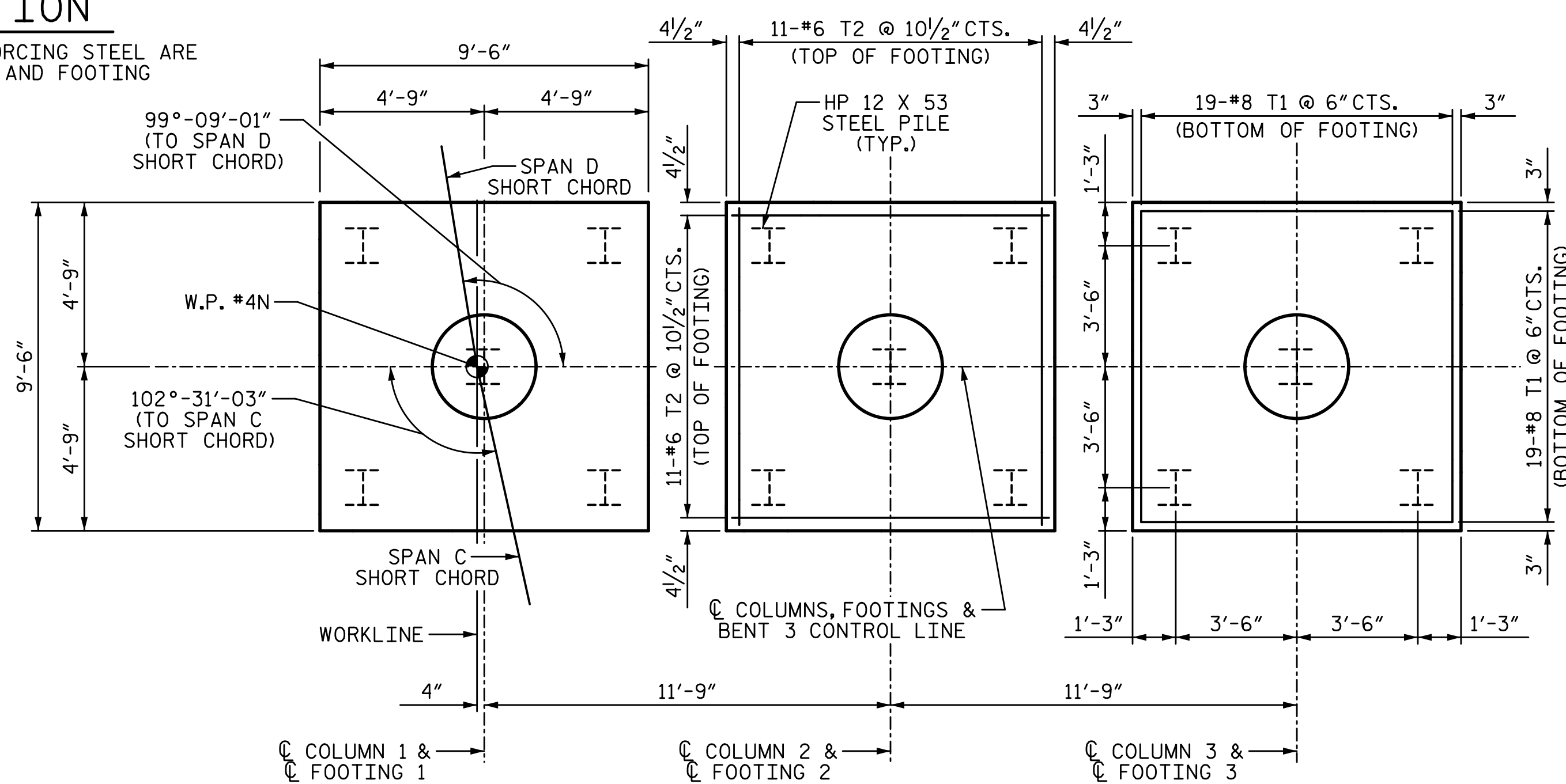


3/22/2017 8:32:05 AM G:\Projects\2014\U-3109A\Structures\Site 2\Site 2-Str 3 Bridge 435 (NBL)\Drawings\Final\403_U3109A_smu_bt3.dgn



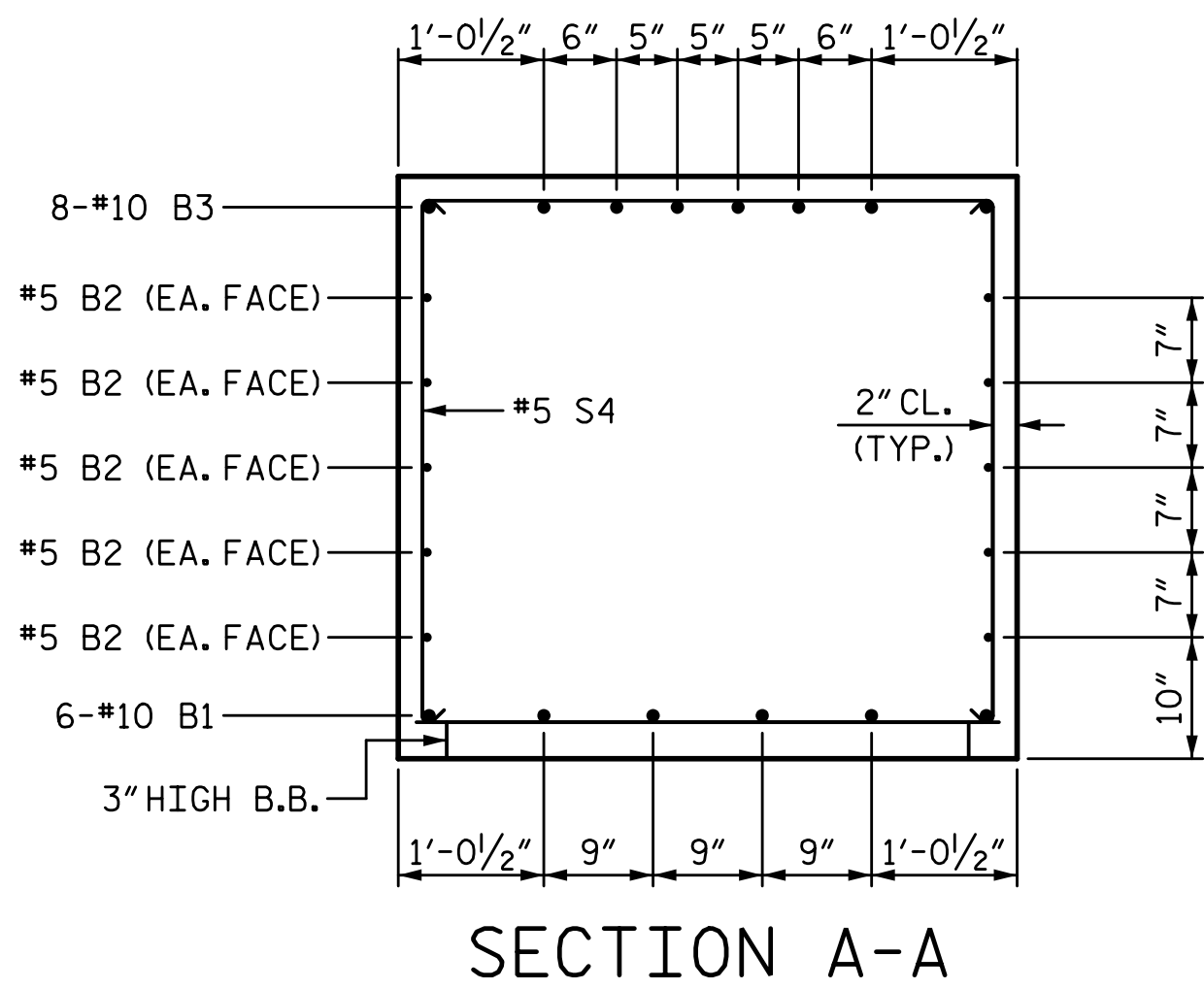
END ELEVATION

DETAILS, DIMENSIONS & REINFORCING STEEL ARE TYPICAL FOR EACH COLUMN AND FOOTING

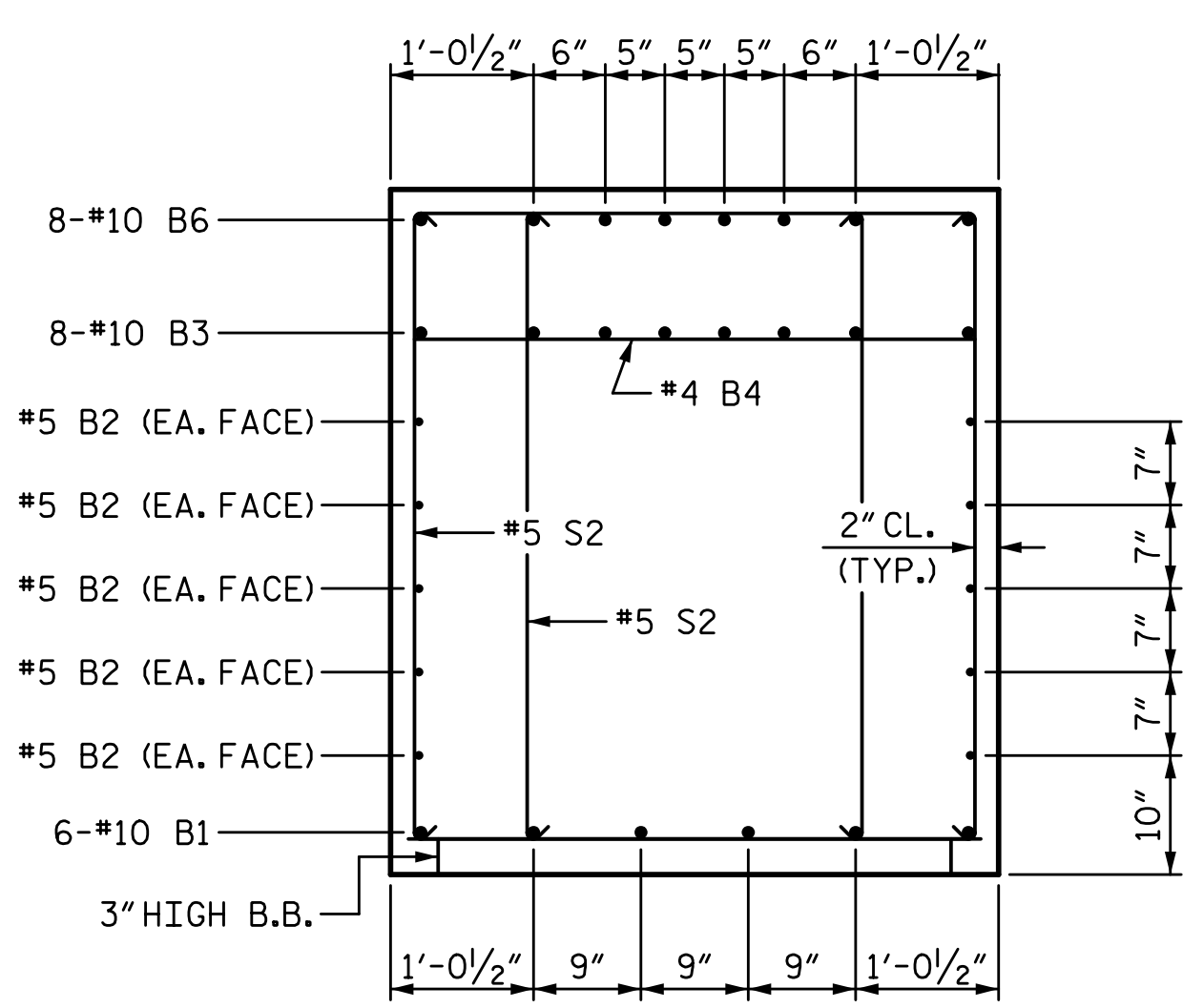


PLAN OF FOOTINGS

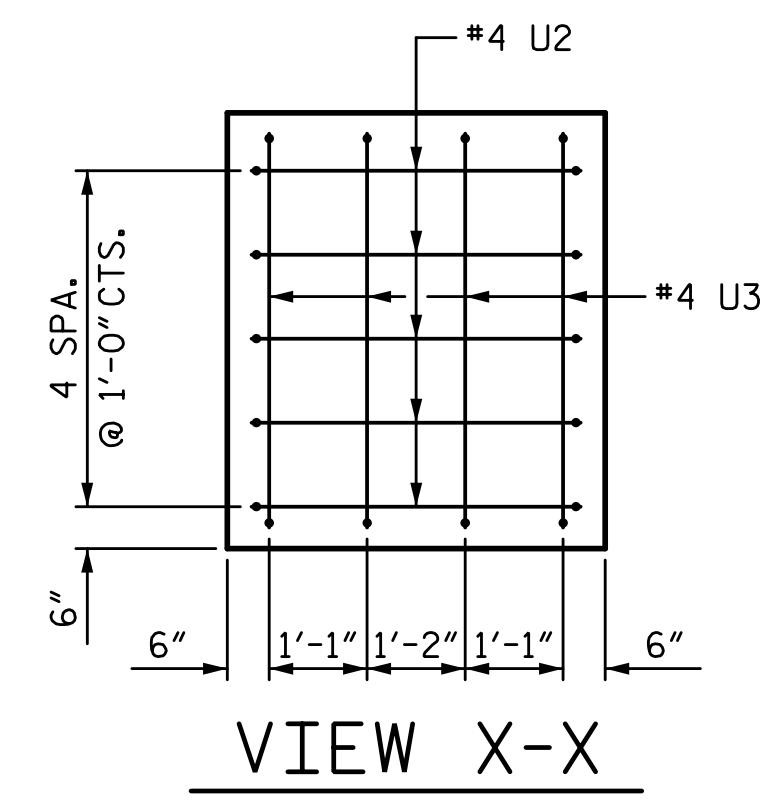
PILE PLACEMENT, DIMENSIONS AND REINFORCING STEEL ARE TYPICAL FOR EACH FOOTING



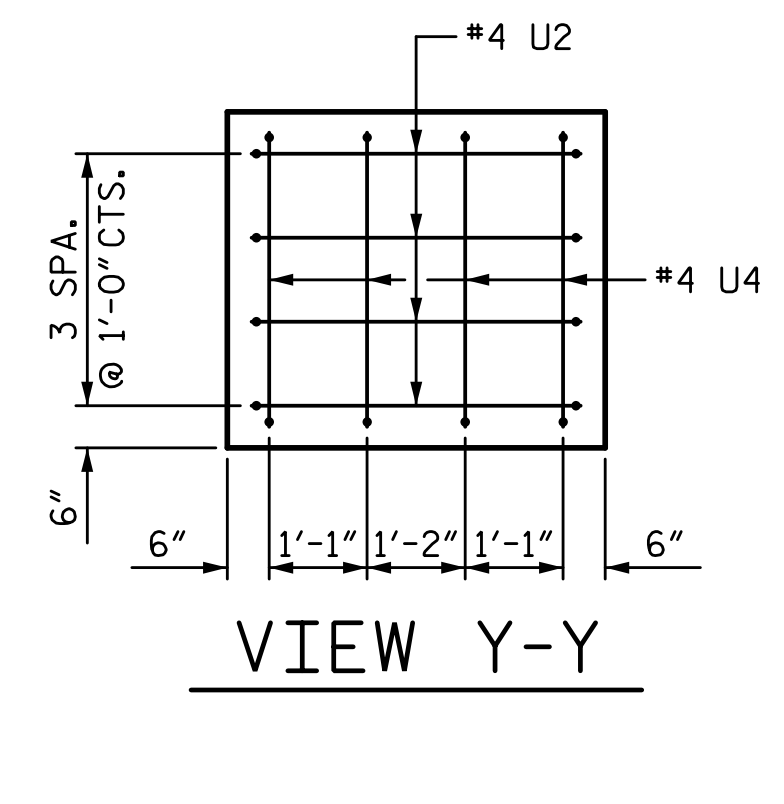
SECTION A-A



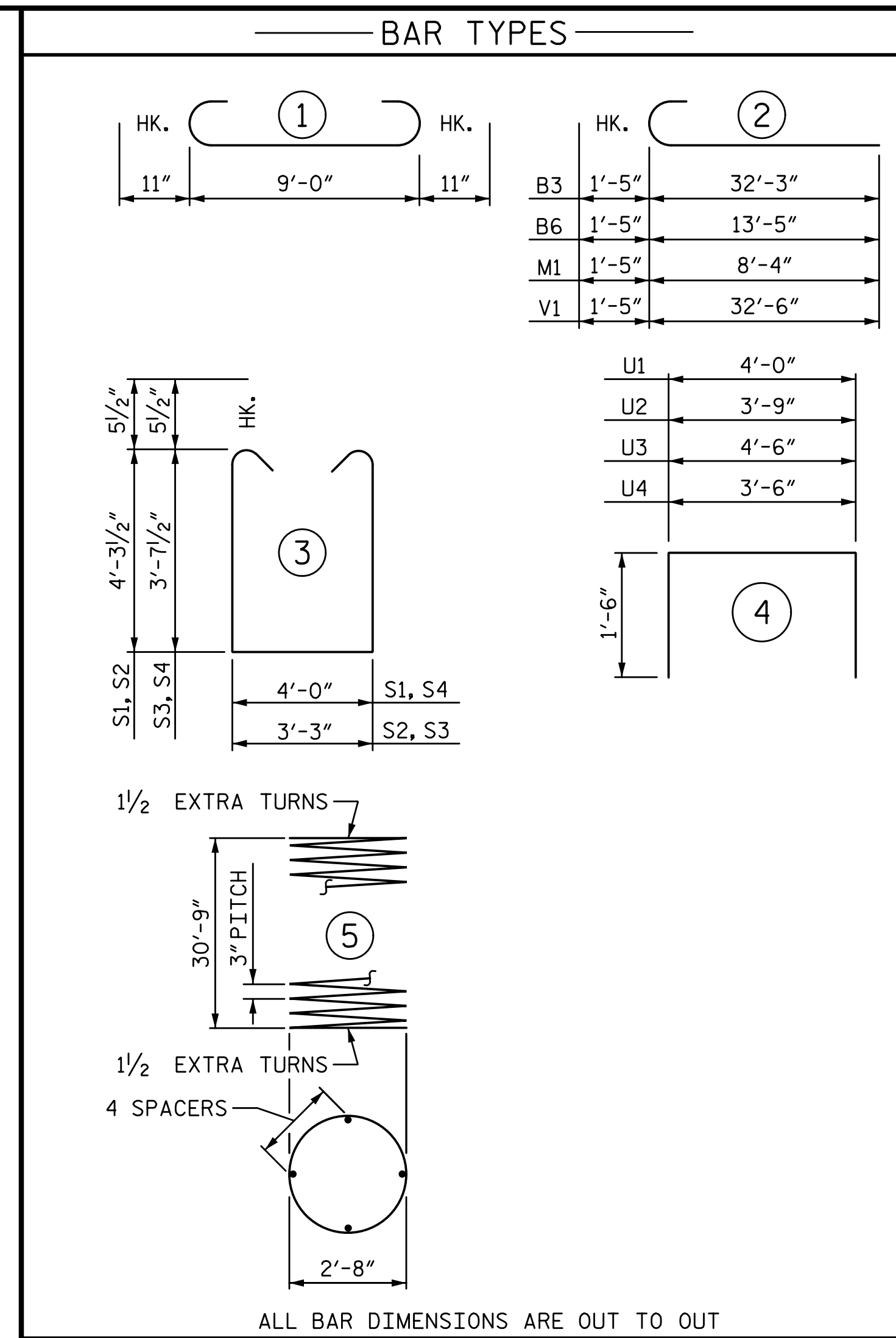
SECTION B-B



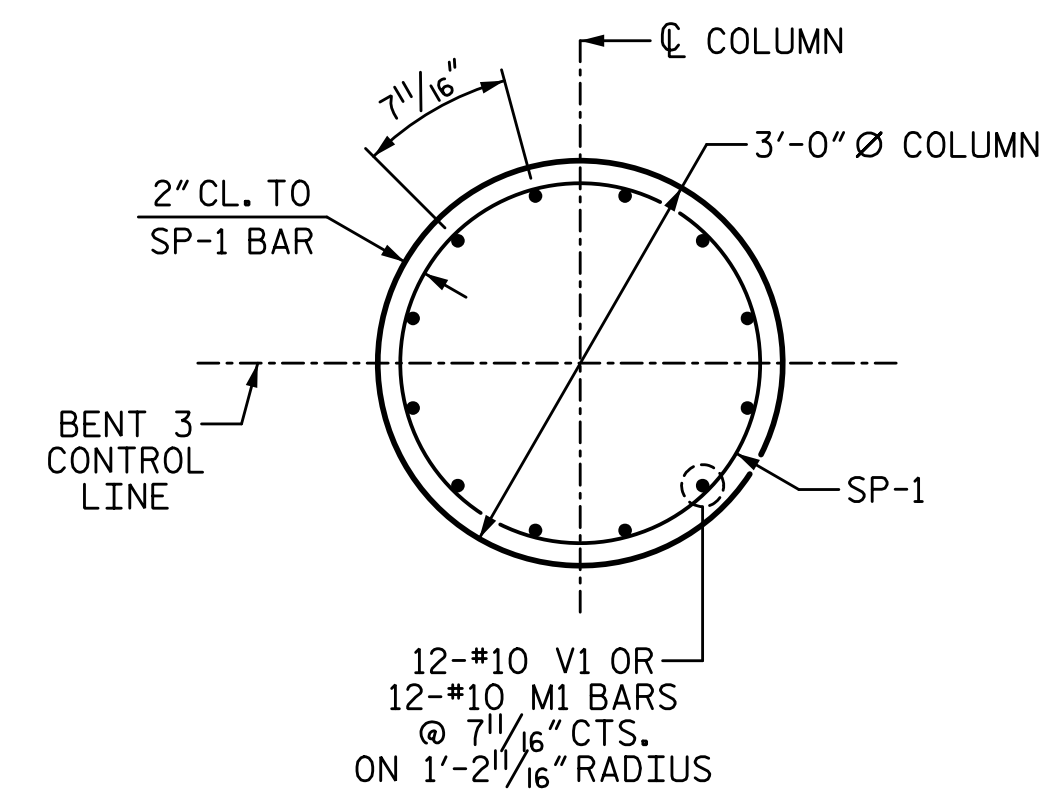
VIEW X-X



VIEW Y-Y



ALL BAR DIMENSIONS ARE OUT TO OUT



PLAN OF COLUMN

DIMENSIONS AND REINFORCING STEEL ARE TYPICAL FOR EACH COLUMN

BILL OF MATERIAL					
BENT 3					
BAR NO.	SIZE	TYPE	LENGTH	WEIGHT	
B1	6	10	STR	32'-4"	835
B2	10	5	STR	32'-4"	337
B3	8	10	2	33'-8"	1159
B4	4	4	STR	4'-0"	11
B5	8	4	STR	9'-1"	49
B6	8	10	2	14'-10"	511
B7	8	4	STR	4'-3"	23
M1	36	10	2	9'-9"	1510
S1	9	5	3	13'-6"	127
S2	24	5	3	12'-9"	319
S3	36	5	3	11'-5"	429
S4	9	5	3	12'-2"	114
T1	114	8	1	10'-10"	3297
T2	66	6	STR	9'-0"	892
U1	40	4	4	7'-0"	187
U2	9	4	4	6'-9"	41
U3	4	4	4	7'-6"	20
U4	4	4	4	6'-6"	17
V1	36	10	2	33'-11"	5254
SP-1	3	*	5	1039'-7"	2083
REINFORCING STEEL					15132 LB
SPIRAL COL. REINF. STEEL					2083 LB
CLASS "A" CONCRETE BREAKDOWN					
POUR 1 (FOOTINGS)					35.1 CY
POUR 2 (COLUMNS)					24.0 CY
POUR 3 (CAP)					23.3 CY
TOTAL					82.4 CY
HP 12 X 53 STEEL PILES					
NO. 15					825 LF
PILE DRIVING EQUIPMENT SETUP FOR HP 12 X 53 STEEL PILES					15 EA

* THE "SP-1" SPIRAL REINFORCING STEEL SHALL BE W20 OR D-20 COLD DRAWN WIRE OR #4 PLAIN OR DEFORMED BAR.

PROJECT NO. U-3109A
ALAMANCE COUNTY
 STATION: 146+61.35 -L-

SHEET 2 OF 2

STATE OF NORTH CAROLINA
 DEPARTMENT OF TRANSPORTATION
 RALEIGH
 SUBSTRUCTURE

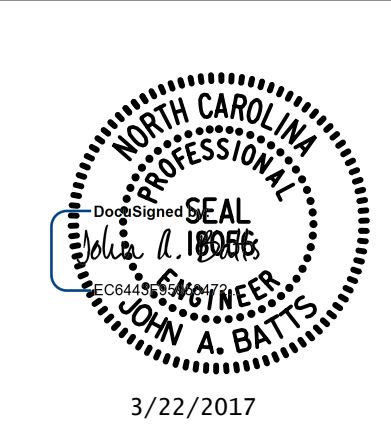
BENT 3

(NBL)

REVISIONS					
NO.	BY:	DATE:	NO.	BY:	DATE:
1			3		
2			4		

SHEET NO. S03-44
 TOTAL SHEETS S03-53

PLANS PREPARED BY:
SIMPSON ENGINEERS & ASSOCIATES
 5640 Dillard Drive
 Suite 200
 Cary, NC 27518
 (919) 852-0468
 (919) 852-0598 (Fax)
 www.simpsonengr.com
 LICENSURE NO. C-2521



DRAWN BY: T. BANKOVICH DATE: 9-15
 CHECKED BY: J.A. BATTS DATE: 9-15
 DESIGN ENGINEER OF RECORD: J.A. BATTS DATE: 9-15