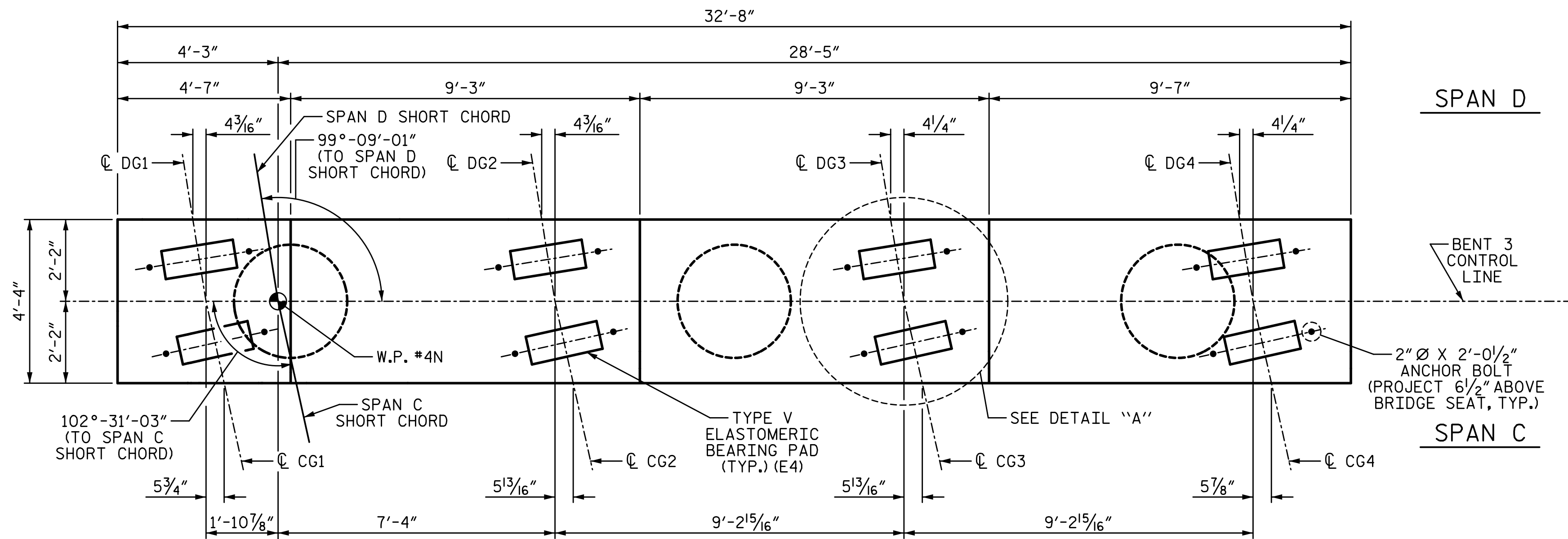


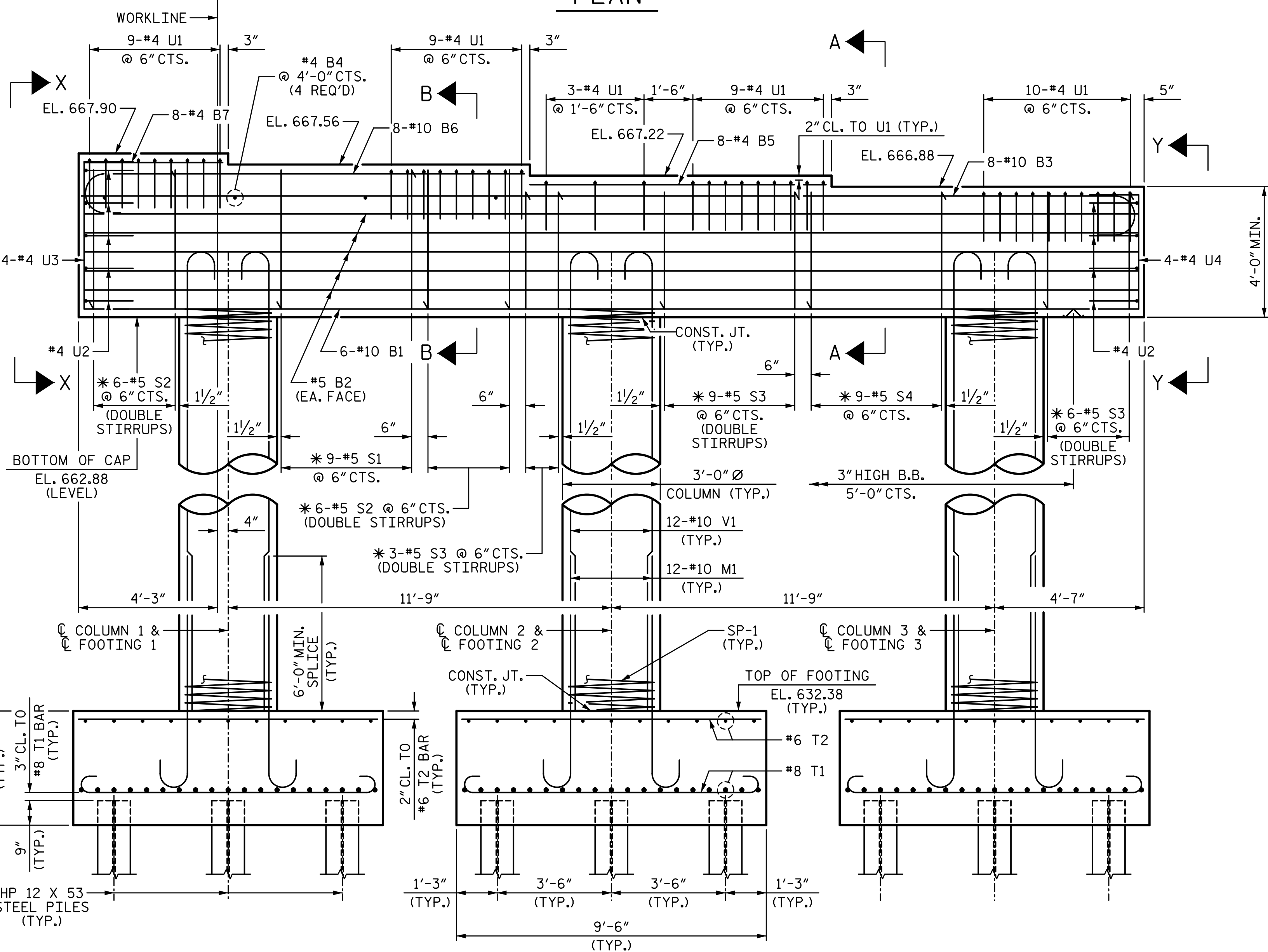
1/6/2017 8:11:15 AM G:\Projects\2014\U-3109A\Structures\Site 2\Site 2-Str 3 Bridge 435 (NBL)\Drawings\Final\403\_U3109A\_smu\_bf3.dgn



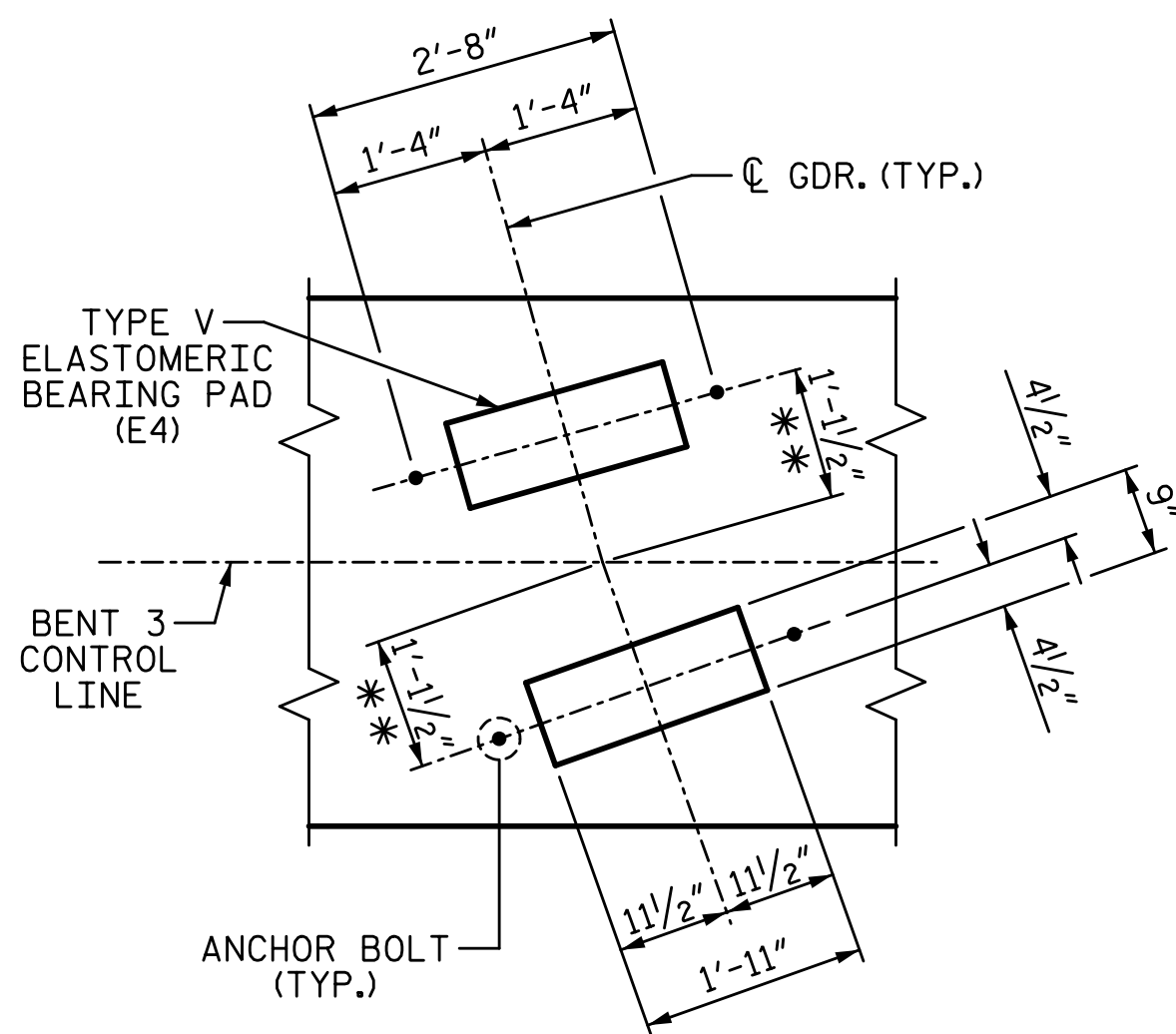
PLAN

NOTES:

- \* INVERT ALTERNATE STIRRUPS.
- STIRRUPS AND "U" BARS IN CAP MAY BE SHIFTED AS NECESSARY TO CLEAR ANCHOR BOLTS.
- HOOKS ON "M" & "V" BARS MAY BE TURNED AS NECESSARY FOR PLACING REINFORCING STEEL.
- FOR PILE SPlice DETAILS, SEE "END BENT 1" SHEET 3 OF 3.
- SEE GENERAL DRAWING "FOUNDATION LAYOUT" FOR ADDITIONAL NOTES FOR DRIVING PILES.



ELEVATION



DETAIL "A"

(TYP. EA. GIRDER) (\*\* MEASURED ALONG CL GIRDER)

PROJECT NO. U-3109A  
ALAMANCE COUNTY  
 STATION: 146+61.35 -L-

SHEET 1 OF 2

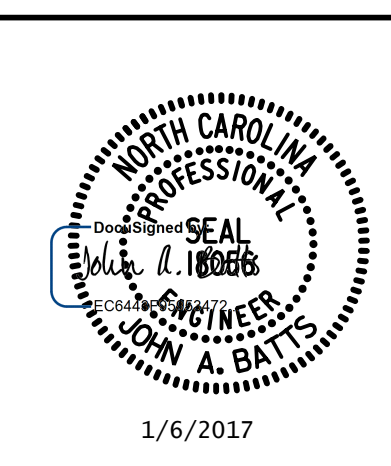
STATE OF NORTH CAROLINA  
 DEPARTMENT OF TRANSPORTATION  
 RALEIGH  
 SUBSTRUCTURE

BENT 3

(NBL)

REVISIONS					
NO.	BY:	DATE:	NO.	BY:	DATE:
1			3		
2			4		

PLANS PREPARED BY:  
**SE & A**  
 SIMPSON  
 ENGINEERS  
 & ASSOCIATES  
 5640 Dillard Drive  
 Suite 200  
 Cary, NC 27518  
 (919) 852-0468  
 (919) 852-0598 (Fax)  
 www.simpsonengr.com  
 LICENSURE NO. C-2521



DRAWN BY: T. BANKOVICH DATE: 9-15  
 CHECKED BY: J.A. BATTS DATE: 9-15  
 DESIGN ENGINEER OF RECORD: J.A. BATTS DATE: 9-15