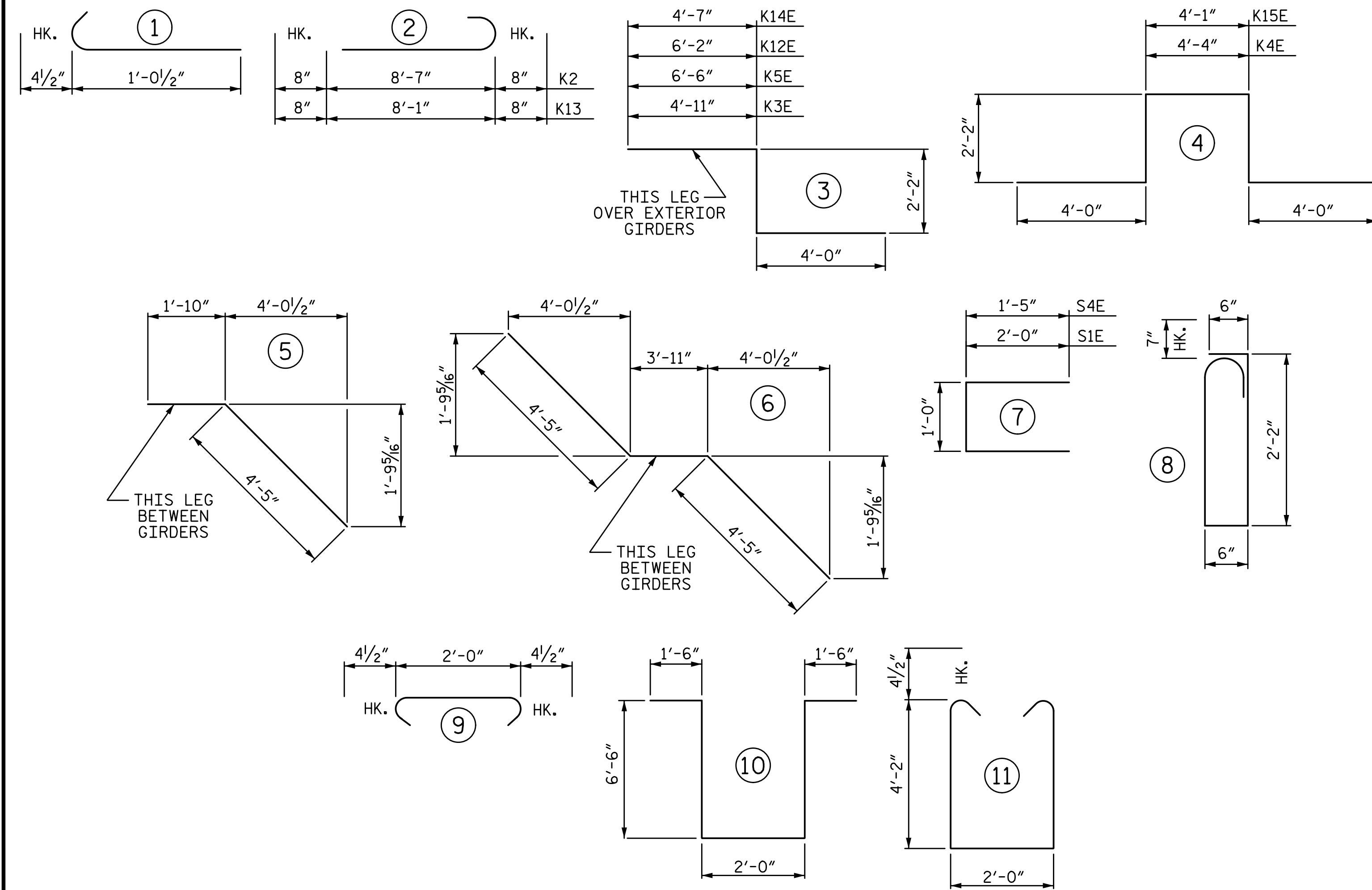


1/6/2017 8:11:12 AM G:\Projects\2014\U-3109A\Structures\Site 2\Site 2-Str 3 Bridge 435 (NBL)\Drawings\Final\403\_U3109A\_smu\_bm.dgn

BAR TYPES



ALL BAR DIMENSIONS ARE OUT TO OUT

BILL OF MATERIAL

SPANS A, B, C, & D																	
BAR	NO.	SIZE	TYPE	LENGTH	WEIGHT	BAR	NO.	SIZE	TYPE	LENGTH	WEIGHT	BAR	NO.	SIZE	TYPE	LENGTH	WEIGHT
A1E	778	5	STR	33'-11"	27522	A216	1	5	STR	9'-10"	10						
A2	778	5	STR	33'-11"	27522	A217	1	5	STR	8'-3"	9						
						A218	1	5	STR	6'-9"	7						
A101E	1	5	STR	33'-1"	35	A219	1	5	STR	5'-2"	5						
A102E	1	5	STR	31'-7"	33	A220	1	5	STR	3'-7"	4						
A103E	1	5	STR	30'-0"	31	A221	1	5	STR	2'-1"	2						
A104E	1	5	STR	28'-5"	30	A222	1	5	STR	30'-9"	32						
A105E	1	5	STR	26'-11"	28	A223	1	5	STR	26'-2"	27						
A106E	1	5	STR	25'-4"	26	A224	1	5	STR	21'-7"	23						
A107E	1	5	STR	23'-10"	25	A225	1	5	STR	17'-0"	18						
A108E	1	5	STR	22'-3"	23	A226	1	5	STR	12'-6"	13						
A109E	1	5	STR	20'-8"	22	A227	1	5	STR	7'-11"	8						
A110E	1	5	STR	19'-2"	20	A228	1	5	STR	3'-4"	3						
A111E	1	5	STR	17'-7"	18												
A112E	1	5	STR	16'-0"	17	B1	423	5	STR	57'-2"	25221						
A113E	1	5	STR	14'-6"	15	B2E	275	4	STR	23'-7"	4332						
A114E	1	5	STR	12'-11"	13	B3E	150	7	STR	33'-3"	10194						
A115E	1	5	STR	11'-5"	12	B4E	44	7	STR	39'-6"	3552						
A116E	1	5	STR	9'-10"	10	B5E	75	7	STR	31'-0"	4752						
A117E	1	5	STR	8'-3"	9	B6E	22	7	STR	35'-6"	1596						
A118E	1	5	STR	6'-9"	7												
A119E	1	5	STR	5'-2"	5	G1E	1	5	STR	36'-6"	38						
A120E	1	5	STR	3'-7"	4	G2E	1	5	STR	34'-2"	36						
A121E	1	5	STR	2'-1"	2												
A122E	1	5	STR	30'-9"	32	J1E	73	4	1	1'-5"	69						
A123E	1	5	STR	26'-2"	27												
A124E	1	5	STR	21'-7"	23	K1	9	6	STR	5'-6"	74						
A125E	1	5	STR	17'-0"	18	K2	6	6	2	9'-11"	89						
A126E	1	5	STR	12'-6"	13	K3E	2	8	3	11'-1"	59						
A127E	1	5	STR	7'-11"	8	K4E	4	8	4	16'-8"	178						
A128E	1	5	STR	3'-4"	3	K5E	2	8	3	12'-8"	68						
						K6	18	4	STR	5'-7"	67						
A201	1	5	STR	33'-1"	35	K7	90	4	STR	8'-5"	506						
A202	1	5	STR	31'-7"	33	K8	18	4	STR	5'-5"	65						
A203	1	5	STR	30'-0"	31	K9	42	4	5	6'-3"	175						
A204	1	5	STR	28'-5"	30	K10	42	4	6	12'-9"	358						
A205	1	5	STR	26'-11"	28	K11	9	6	STR	5'-2"	70						
A206	1	5	STR	25'-4"	26	K12E	2	8	3	12'-4"	66						
A207	1	5	STR	23'-10"	25	K13	6	6	2	9'-5"	85						
A208	1	5	STR	22'-3"	23	K14E	2	8	3	10'-9"	57						
A209	1	5	STR	20'-8"	22	K15E	4	8	4	16'-5"	175						
A210	1	5	STR	19'-2"	20												
A211	1	5	STR	17'-7"	18	S1E	18	4	7	5'-0"	60						
A212	1	5	STR	16'-0"	17	S2E	36	5	8	5'-11"	222						
A213	1	5	STR	14'-6"	15	S3	378	4	9	2'-9"	694						
A214	1	5	STR	12'-11"	13	S4E	18	4	7	3'-10"	46						
A215	1	5	STR	11'-5"	12												
						U1	18	4	11	11'-1"	133						
						U2E	54	4	10	18'-0"	649						

SUPERSTRUCTURE BILL OF MATERIAL

	CLASS "AA" CONCRETE	REINFORCING STEEL	EPOXY COATED REINFORCING STEEL
	CY	LB	LB
POUR 1	134.9	--	--
POUR 2	162.2	--	--
POUR 3	162.3	--	--
POUR 4	137.2	--	--
POUR 5	9.5	--	--
TOTAL	606.1	55568	54180

\*\* QUANTITIES FOR BARRIER RAIL ARE NOT INCLUDED. SEE "POUR SEQUENCE" SHEET FOR LOCATION OF POURS.

SUPERSTRUCTURE REINFORCING STEEL LENGTHS ARE BASED ON THE FOLLOWING MINIMUM SPLICE LENGTHS

BAR SIZE	SUPERSTRUCTURE EXCEPT APPROACH SLABS, PARAPET, AND BARRIER RAIL		APPROACH SLABS		PARAPET AND BARRIER RAIL
	EPOXY COATED	UNCOATED	EPOXY COATED	UNCOATED	
#4	2'-0"	1'-9"	2'-0"	1'-9"	2'-9"
#5	2'-6"	2'-2"	2'-6"	2'-2"	3'-5"
#6	3'-0"	2'-7"	3'-10"	2'-7"	4'-4"
#7	5'-3"	3'-6"			
#8	6'-10"	4'-7"			

GROOVING BRIDGE FLOORS

APPROACH SLABS	1,333	SQ. FT.
BRIDGE DECK	13,762	SQ. FT.
TOTAL	15,095	SQ. FT.

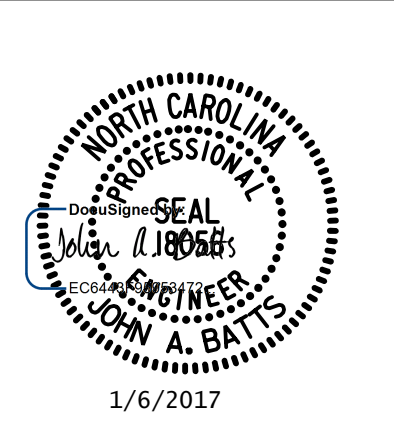
REINFORCING STEEL	55568 LB
EPOXY COATED REINFORCING STEEL	54180 LB

"E" INDICATES EPOXY COATED REINFORCING STEEL

PROJECT NO. U-3109A  
ALAMANCE COUNTY  
 STATION: 146+61.35 -L-

PLANS PREPARED BY:

**SIMPSON ENGINEERS & ASSOCIATES**  
 5640 Dillard Drive  
 Suite 200  
 Cary, NC 27518  
 (919) 852-0468  
 (919) 852-0598 (Fax)  
 www.simpsonengr.com  
 LICENSURE NO. C-2521



STATE OF NORTH CAROLINA  
 DEPARTMENT OF TRANSPORTATION  
 RALEIGH  
 SUPERSTRUCTURE

BILL OF MATERIAL

(NBL)

REVISIONS						SHEET NO.
NO.	BY:	DATE:	NO.	BY:	DATE:	
1			3			TOTAL SHEETS
2			4			S03-53

DRAWN BY: T. BANKOVICH DATE: 9-15  
 CHECKED BY: J.A. BATTS DATE: 9-15  
 DESIGN ENGINEER OF RECORD: J.A. BATTS DATE: 9-15

STR. #3