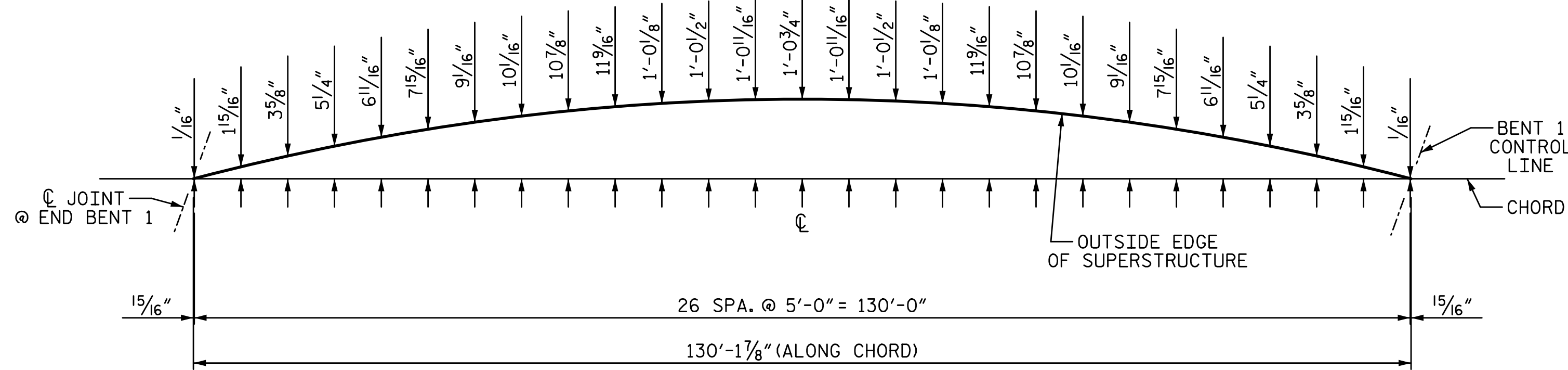
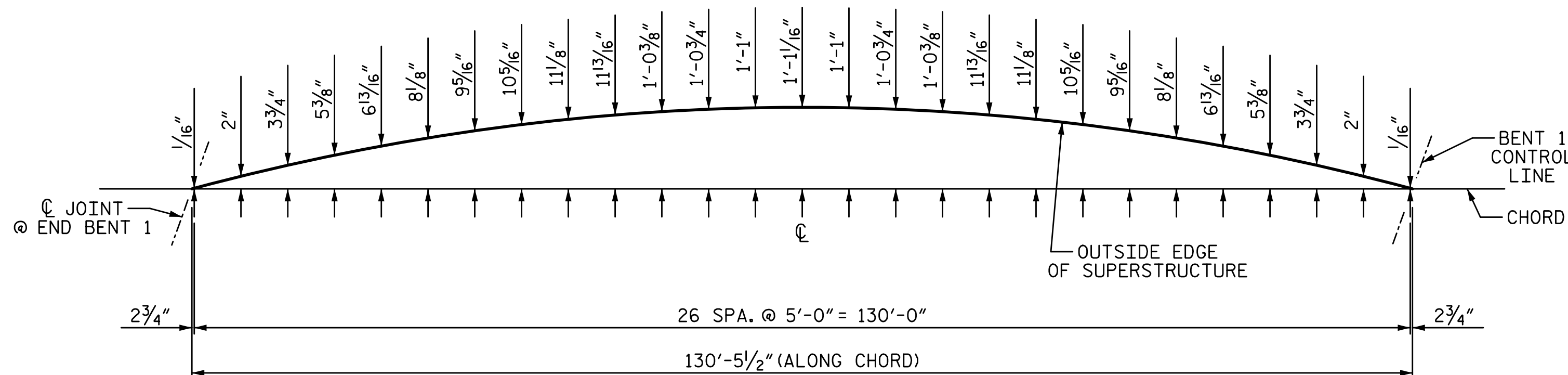


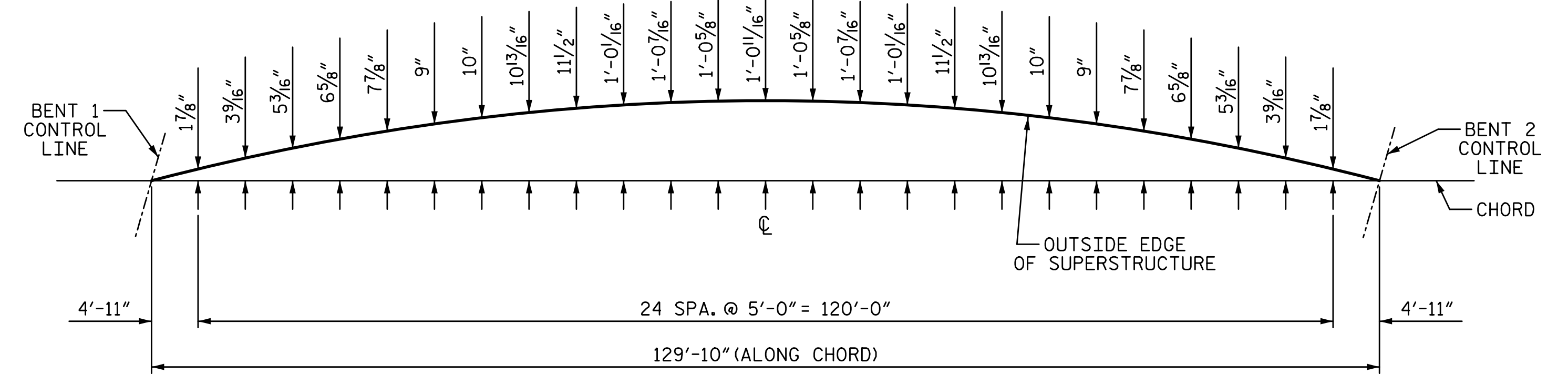
1/6/2017 8:11:08 AM G:\Projects\2014\U-3109A\Structures\Site 2\Site 2-Str 3 Bridge 435 (NBL)\Drawings\Final\403\_U3109A\_smu\_arc.dgn



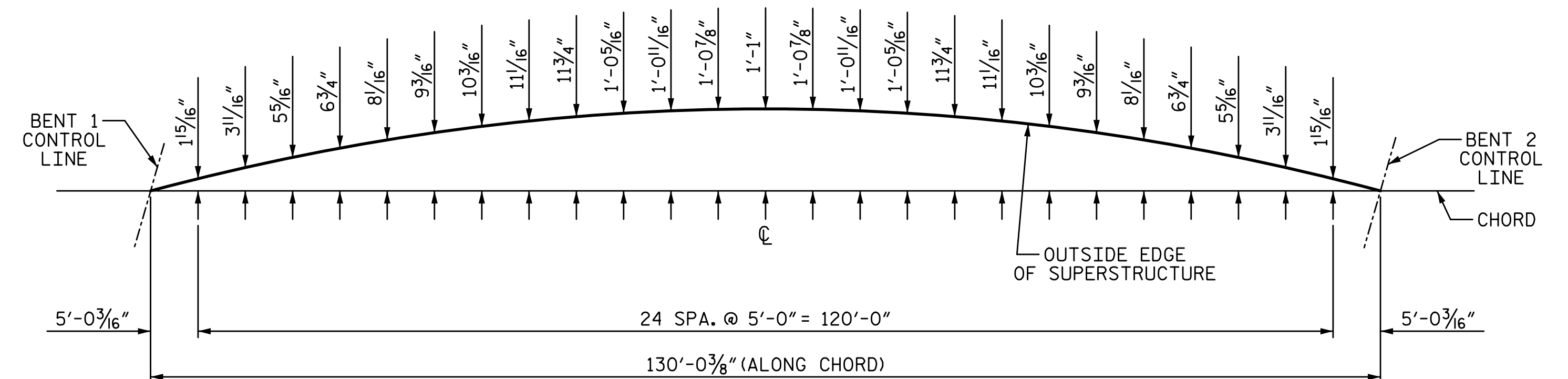
**SPAN A ARC OFFSETS (LT SIDE)**



**SPAN A ARC OFFSETS (RT SIDE)**



**SPAN B ARC OFFSETS (LT SIDE)**

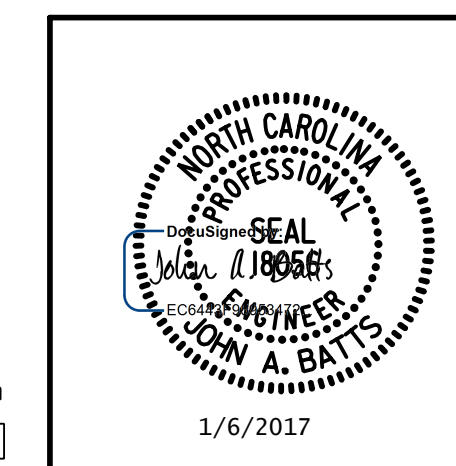


**SPAN B ARC OFFSETS (RT SIDE)**

DRAWN BY:	T. BANKOVICH	DATE:	9-15
CHECKED BY:	J.A. BATTS	DATE:	9-15
DESIGN ENGINEER OF RECORD:	J.A. BATTS	DATE:	9-15

PLANS PREPARED BY:

**SIMPSON ENGINEERS & ASSOCIATES**  
 5640 Dillard Drive  
 Suite 200  
 Cary, NC 27518  
 (919) 852-0468  
 (919) 852-0598 (Fax)  
 www.simpsonengr.com  
 LICENSURE NO. C-2521



PROJECT NO. U-3109A  
ALAMANCE COUNTY  
 STATION: 146+61.35 -L-

SHEET 1 OF 2

STATE OF NORTH CAROLINA DEPARTMENT OF TRANSPORTATION RALEIGH SUPERSTRUCTURE					
ARC OFFSETS (NBL)					
REVISIONS					
NO.	BY:	DATE:	NO.	BY:	DATE:
1			3		
2			4		
					SHEET NO. S03-16
					TOTAL SHEETS S03-53

STR. #3