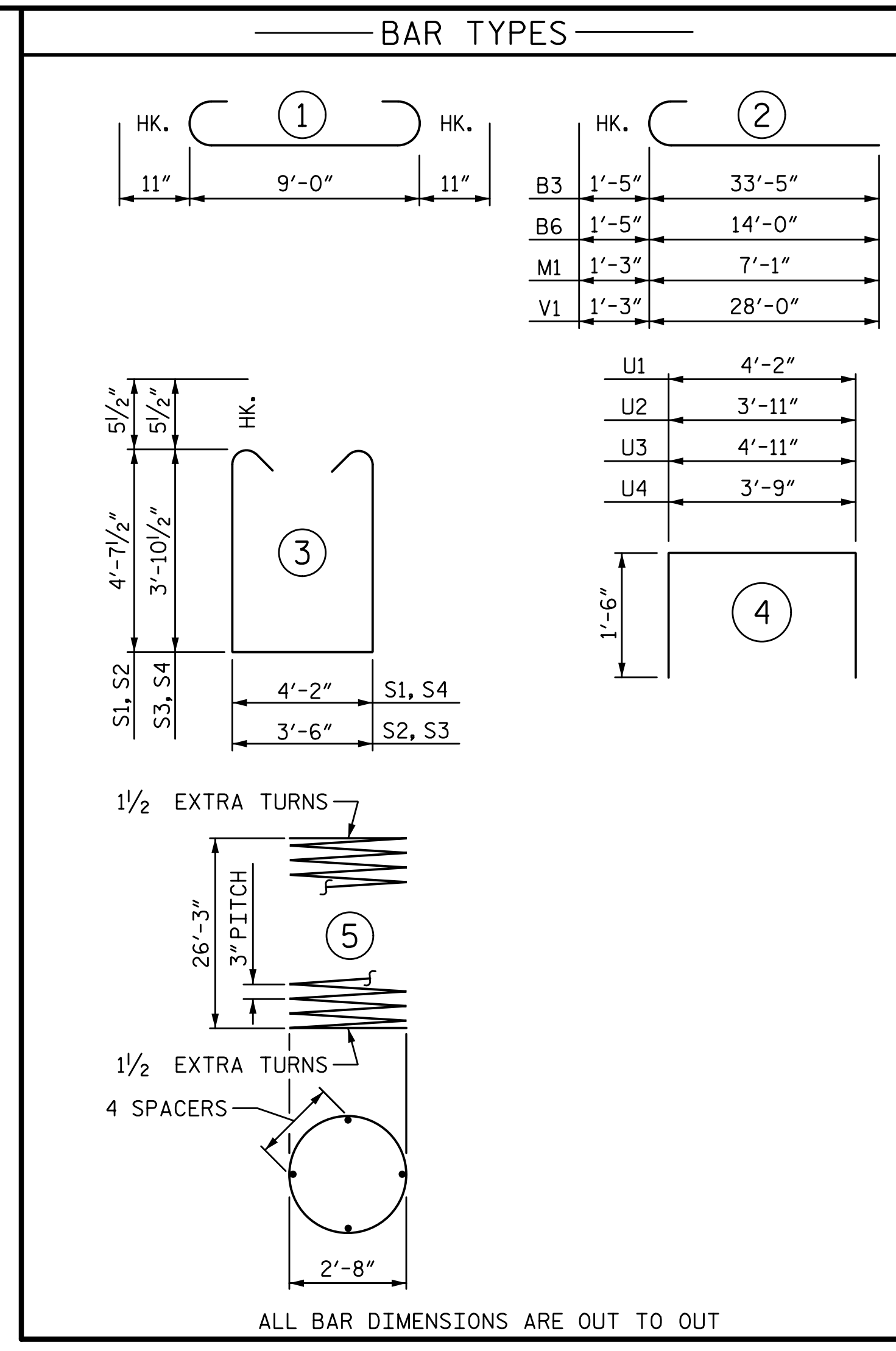
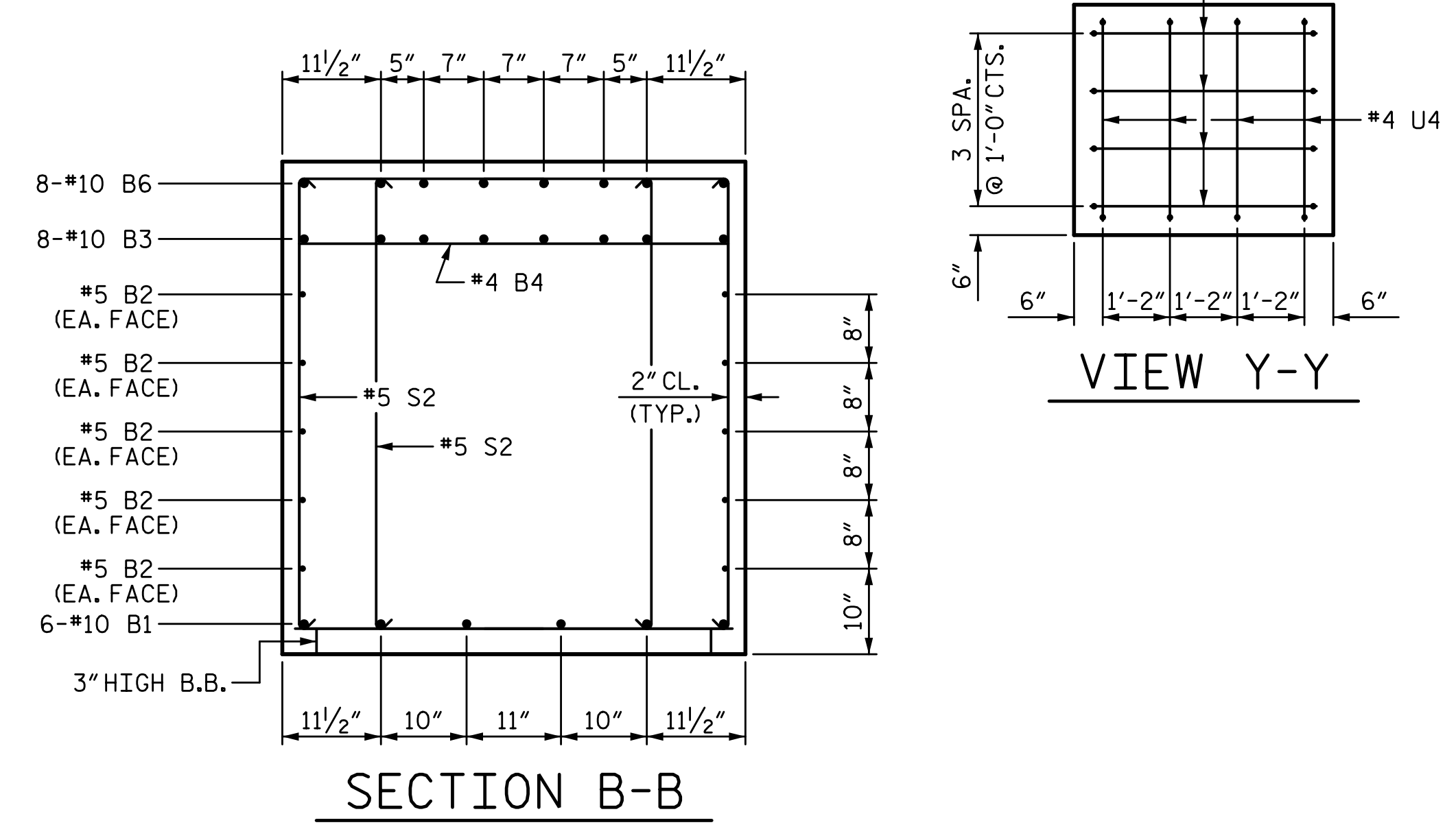
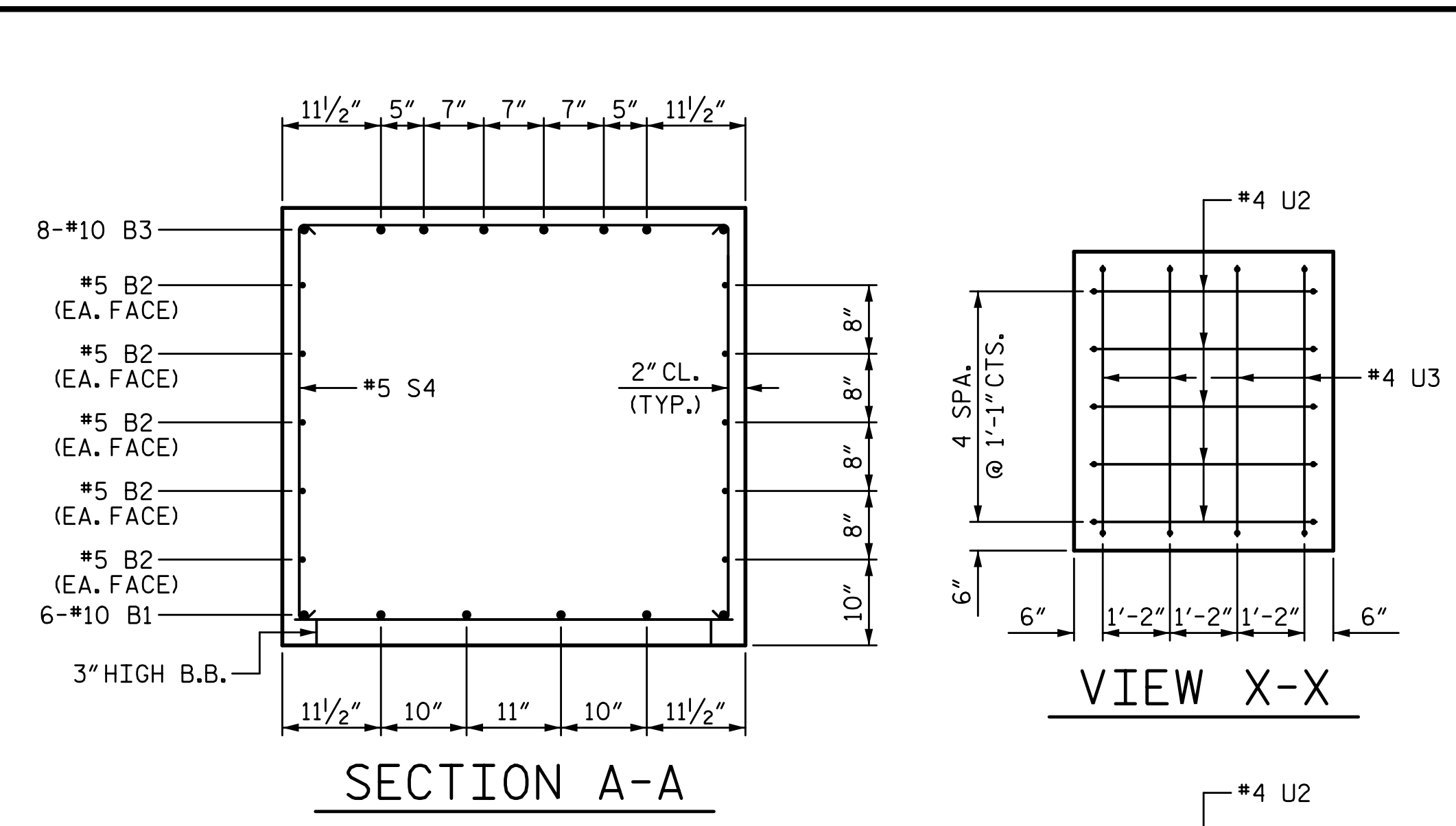
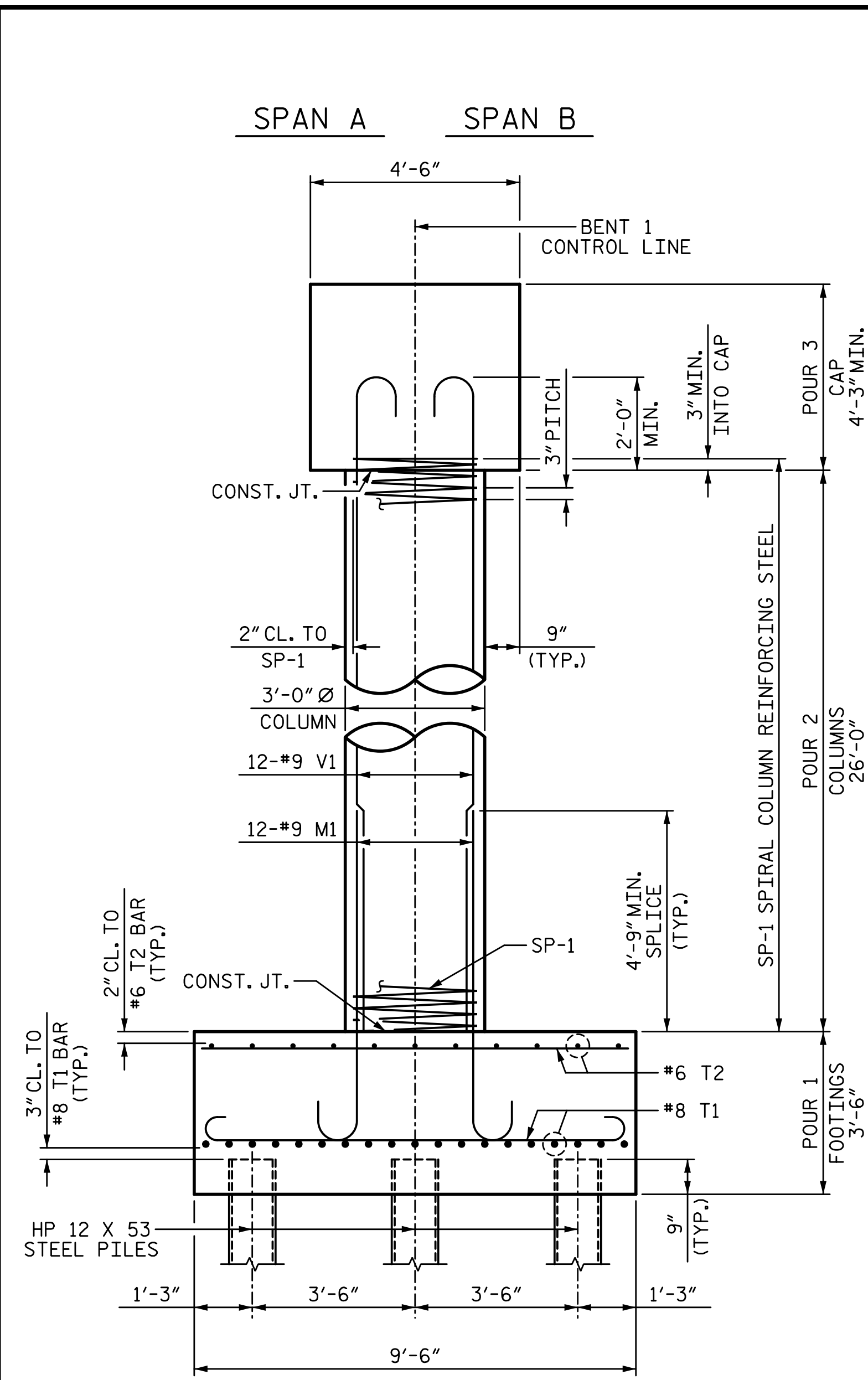
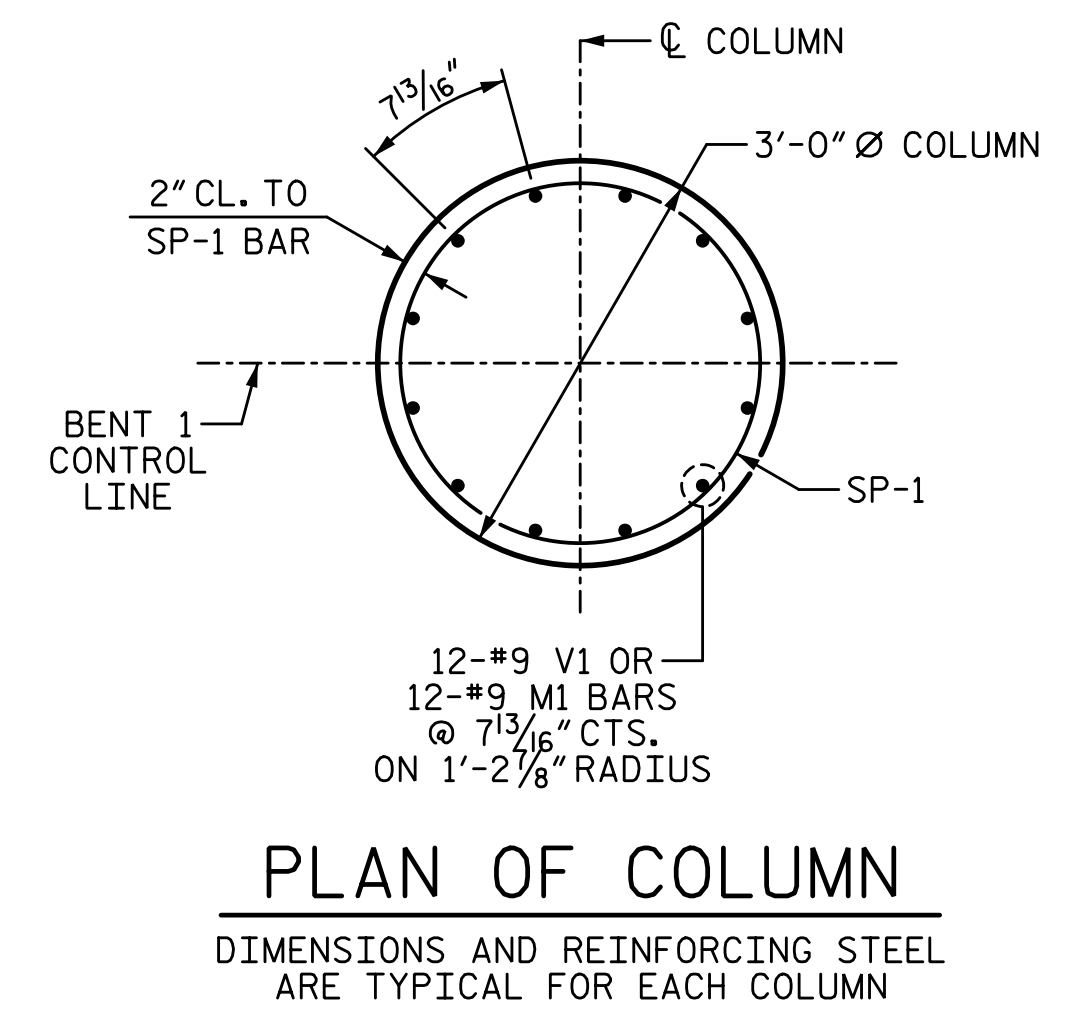
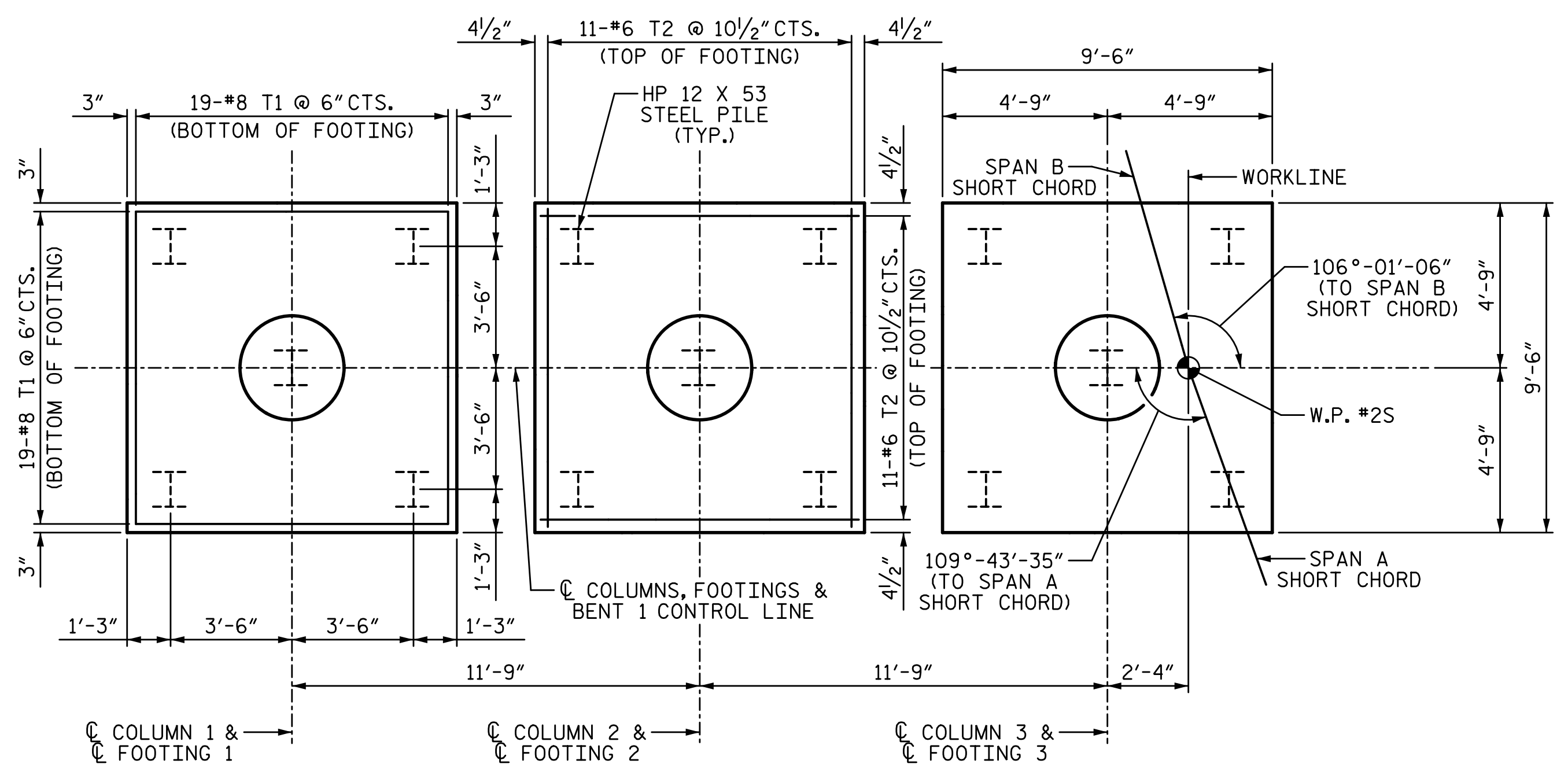


3/22/2017 8:30:08 AM G:\Projects\2014\U-3109A\Structures\Site 2\Site 2-Str 2 Bridge 436 (SBL)\Drawings\Final\402_U3109A_smu_bf1.dgn



BILL OF MATERIAL					
BENT 1					
BAR NO.	SIZE	TYPE	LENGTH	WEIGHT	
B1	6	10	STR	33'-6"	865
B2	10	5	STR	33'-6"	349
B3	8	10	2	34'-10"	1199
B4	4	4	STR	4'-2"	11
B5	8	4	STR	9'-5"	50
B6	8	10	2	15'-5"	531
B7	8	4	STR	4'-6"	24
M1	36	9	2	8'-4"	1020
S1	9	5	3	14'-4"	135
S2	26	5	3	13'-8"	371
S3	38	5	3	12'-2"	482
S4	9	5	3	12'-10"	120
T1	114	8	1	10'-10"	3297
T2	66	6	STR	9'-0"	892
U1	40	4	4	7'-2"	191
U2	9	4	4	6'-11"	42
U3	4	4	4	7'-11"	21
U4	4	4	4	6'-9"	18
V1	36	9	2	29'-3"	3580
SP-1	3	*	5	891'-1"	1786
REINFORCING STEEL				13198	LB
SPIRAL COL. REINF. STEEL				1786	LB
CLASS "A" CONCRETE BREAKDOWN					
POUR 1 (FOOTINGS)				35.1	CY
POUR 2 (COLUMNS)				20.5	CY
POUR 3 (CAP)				26.9	CY
TOTAL				82.5	CY
HP 12 X 53 STEEL PILES					
NO. 15				865	LF
PILE DRIVING EQUIPMENT SETUP FOR HP 12 X 53 STEEL PILES					
				15	EA



PROJECT NO. U-3109A
ALAMANCE COUNTY
 STATION: 146+61.35 -L-

SHEET 2 OF 2

STATE OF NORTH CAROLINA DEPARTMENT OF TRANSPORTATION RALEIGH					
SUBSTRUCTURE					
BENT 1					
(SBL)					
REVISIONS					
NO.	BY:	DATE:	NO.	BY:	DATE:
1			3		
2			4		

SHEET NO. S02-40
 TOTAL SHEETS S02-51

DRAWN BY: T. BANKOVICH DATE: 9-15
 CHECKED BY: J.A. BATTS DATE: 9-15
 DESIGN ENGINEER OF RECORD: J.A. BATTS DATE: 9-15

PLANS PREPARED BY:
SIMPSON & ASSOCIATES
 5640 Dillard Drive
 Suite 200
 Cary, NC 27518
 (919) 852-0468
 (919) 852-0598 (Fax)
 www.simpsonengr.com
 LICENSURE NO. C-2521



STR. #2