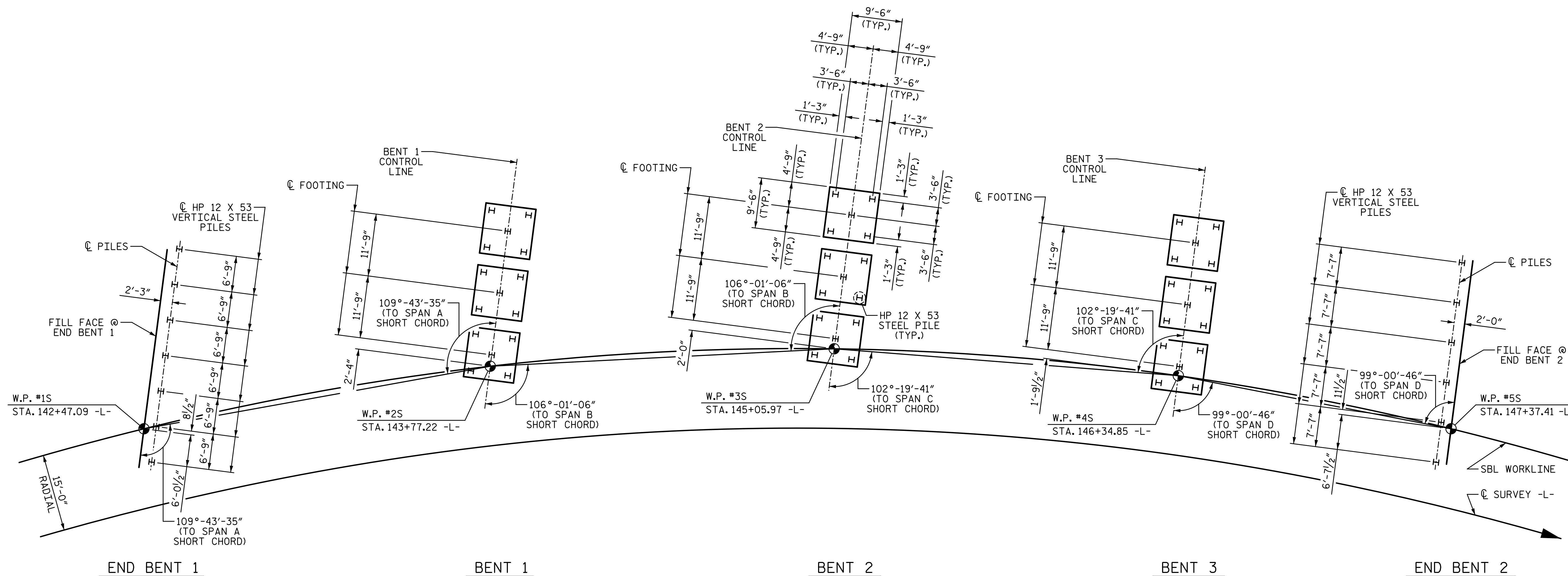


9/11/2015 10:16:39 AM G:\Projects\2014\U-3109A\Structures\Site 2\Site 2-Str 2 Bridge 436 (SBL)\Drawings\Final\402\_U3109A-smu-gd.dgn



### FOUNDATION LAYOUT

(DIMENSIONS LOCATING PILES ARE TO THE PILE CENTERLINE AT THE BOTTOM OF THE CAP OR FOOTING)  
 (DIMENSIONS AND PILE LOCATIONS ARE TYPICAL FOR EACH FOOTING)

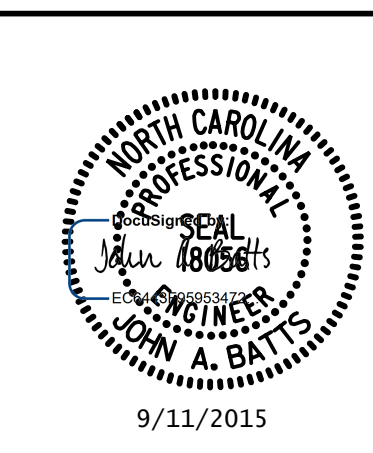
#### FOUNDATION NOTES:

- FOR PILES, SEE SECTION 450 OF THE STANDARD SPECIFICATIONS.
- PILES AT END BENT 1 AND END BENT 2 ARE DESIGNED FOR A FACTORED RESISTANCE OF 120 TONS PER PILE.
- PILES AT BENT 1, BENT 2, AND BENT 3 ARE DESIGNED FOR A FACTORED RESISTANCE OF 140 TONS PER PILE.
- DRIVE PILES AT END BENT 1 AND END BENT 2 TO A REQUIRED DRIVING RESISTANCE OF 200 TONS PER PILE.
- DRIVE PILES AT BENT 1, BENT 2, AND BENT 3 TO A REQUIRED DRIVING RESISTANCE OF 235 TONS PER PILE.
- IT HAS BEEN ESTIMATED THAT A HAMMER WITH AN EQUIVALENT RATED ENERGY IN THE RANGE OF 55,745 FT-LBS PER BLOW WILL BE REQUIRED TO DRIVE PILES AT END BENT 1, BENT 1, BENT 2, BENT 3, AND END BENT 2. THIS ESTIMATED ENERGY RANGE DOES NOT RELEASE THE CONTRACTOR FROM PROVIDING DRIVING EQUIPMENT IN ACCORDANCE WITH SUBARTICLE 450-3(D)(2) OF THE STANDARD SPECIFICATIONS.

IF PILES ARE INSTALLED AFTER MSE WALL CONSTRUCTION, USE A FORM TO BLOCK OUT PILE LOCATIONS DURING WALL CONSTRUCTION. DRIVE PILES INSIDE FORM AND FILL FORM WITH NON-EXCAVATABLE FLOWABLE FILL PER ARTICLE 340-2 OF THE STANDARD SPECIFICATIONS.

PLANS PREPARED BY:

**SIMPSON ENGINEERS & ASSOCIATES**  
 5640 Dillard Drive  
 Suite 200  
 Cary, NC 27518  
 (919) 852-0468  
 (919) 852-0598 (Fax)  
 www.simpsonengr.com  
 LICENSURE NO. C-2521



PROJECT NO. U-3109A  
ALAMANCE COUNTY  
 STATION: 146+61.35 -L-  
22+02.76 -Y16-

SHEET 5 OF 6

STATE OF NORTH CAROLINA DEPARTMENT OF TRANSPORTATION RALEIGH					
<b>GENERAL DRAWING</b>					
FOR SBL BRIDGE ON NC 119 OVER HOLT ST., NORFOLK SOUTHERN RAILROAD (NSRR) AND US 70 BETWEEN SR 1972 AND SR 1921 (SBL)					
REVISIONS				SHEET NO.	
NO.	BY:	DATE:	NO.	BY:	DATE:
1			3		
2			4		
					TOTAL SHEETS S02-51

DRAWN BY: <u>T. BANKOVICH</u>	DATE: <u>9-15</u>
CHECKED BY: <u>J.A. BATTS</u>	DATE: <u>9-15</u>
DESIGN ENGINEER OF RECORD: <u>J.A. BATTS</u>	DATE: <u>9-15</u>

STR. #2