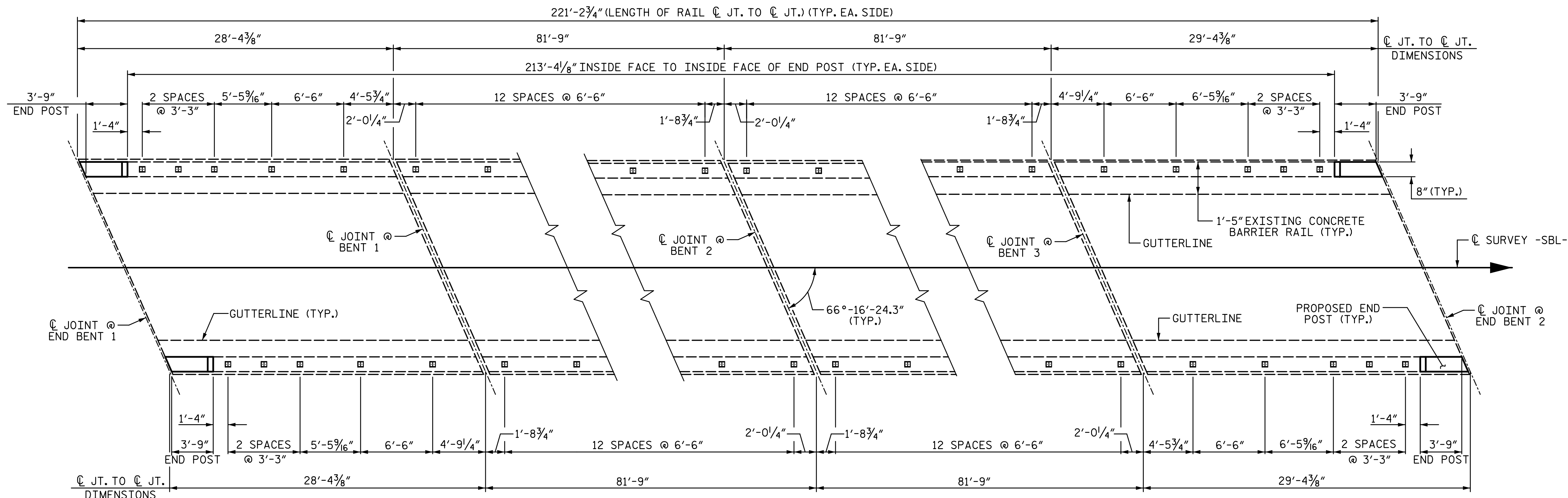
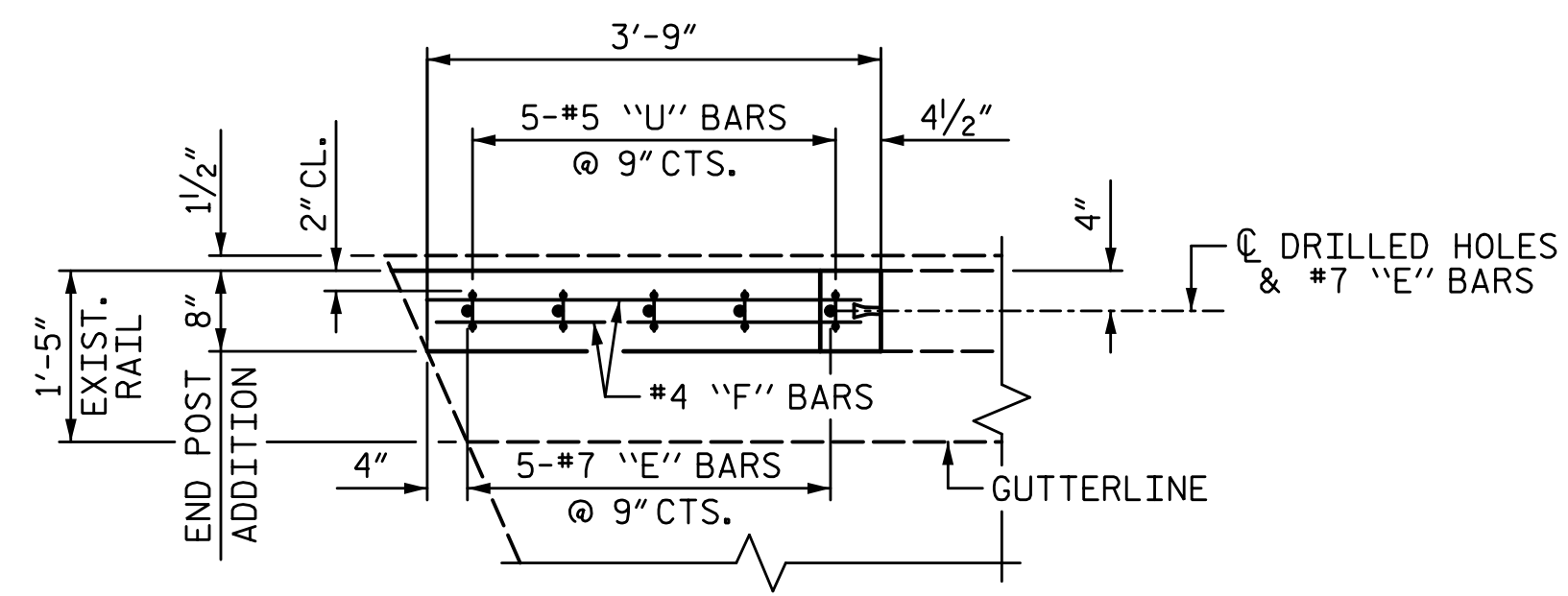


2/10/2017 9:12:15 AM G:\Projects\2014\U-3109A\Structures\Site 1-Bridge 16 (SBL)\Drawings\401_U3109A_SMU_2BMP.dgn

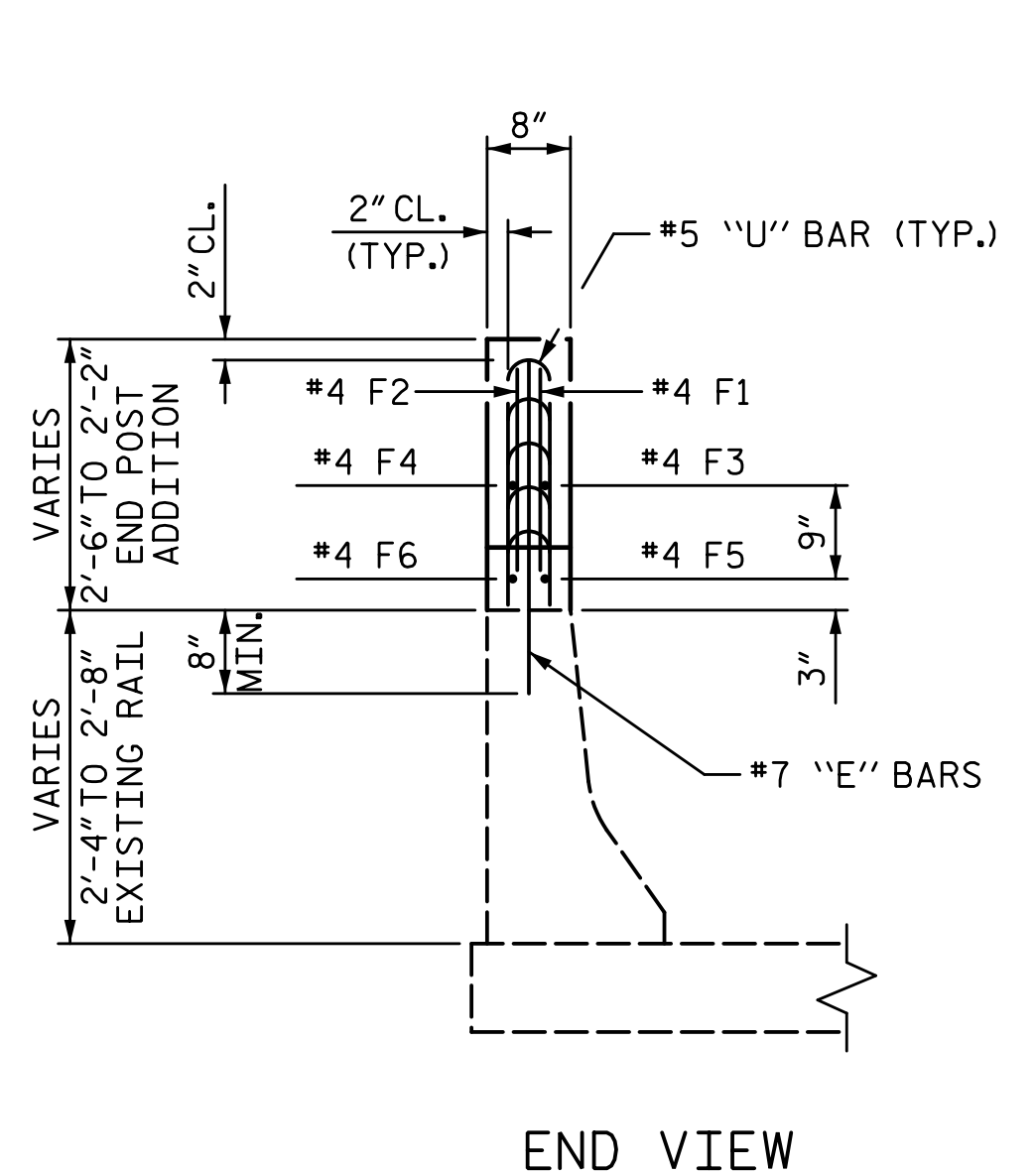


PLAN OF RAIL POST SPACINGS

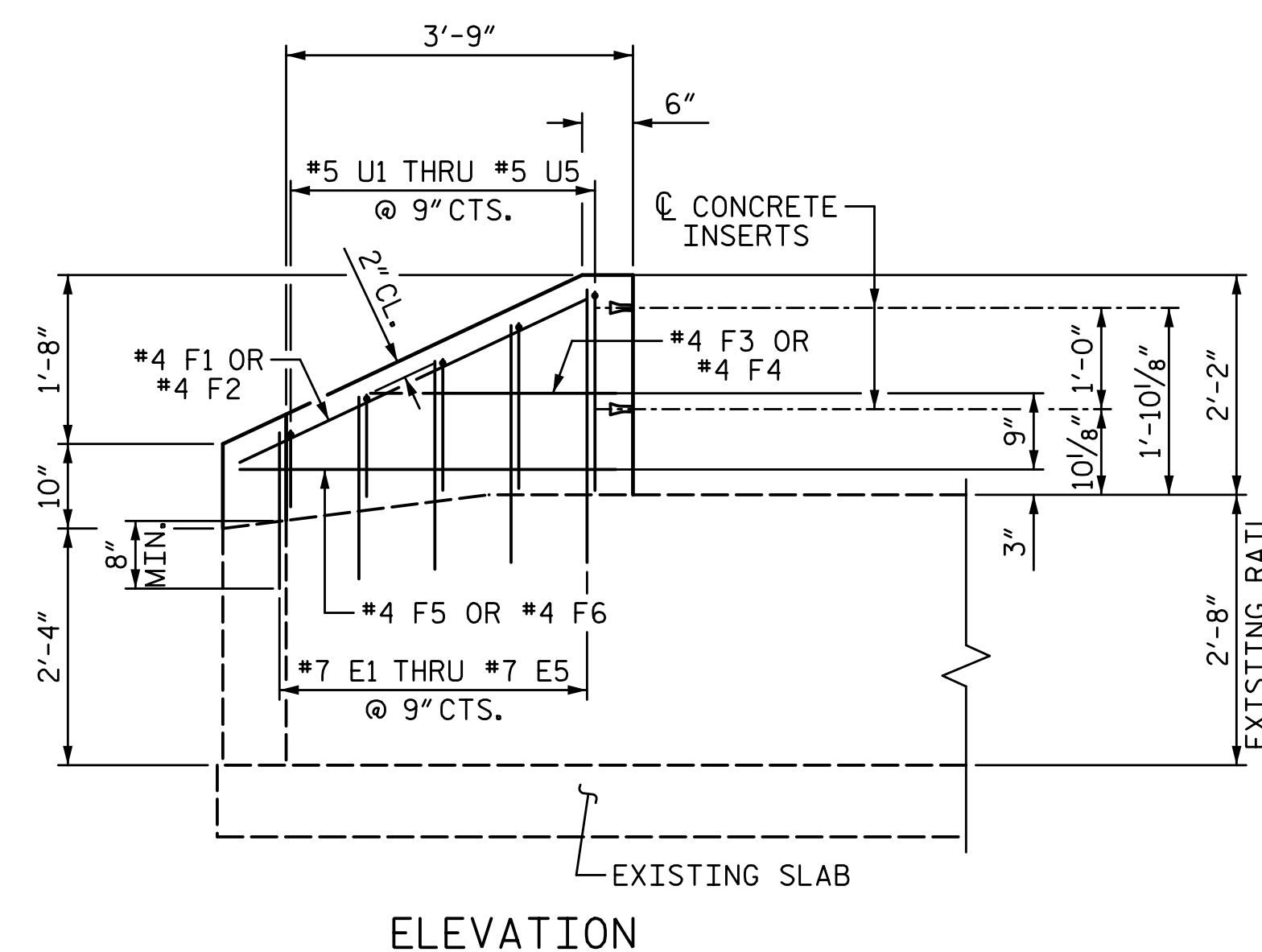
DIMENSIONS MEASURED ALONG BACK FACE OF BARRIER RAIL



PLAN OF END POST



END VIEW



ELEVATION

END POST DETAILS

BILL OF MATERIAL					
FOR 4 END POSTS					
BAR	NO.	SIZE	TYPE	LENGTH	WEIGHT
*E1	4	#7	STR	1'-6"	12
*E2	4	#7	STR	1'-8"	14
*E3	4	#7	STR	1'-11"	16
*E4	4	#7	STR	2'-4"	19
*E5	4	#7	STR	2'-8"	22
*F1	4	#4	STR	3'-7"	10
*F2	4	#4	STR	3'-7"	10
*F3	4	#4	STR	2'-4"	6
*F4	4	#4	STR	2'-8"	7
*F5	4	#4	STR	3'-5"	9
*F6	4	#4	STR	3'-8"	10
*U1	4	#5	1	1'-8"	7
*U2	4	#5	1	2'-2"	9
*U3	4	#5	1	2'-9"	11
*U4	4	#5	1	3'-5"	14
*U5	4	#5	1	4'-1"	17
* EPOXY COATED REINFORCING STEEL					193 LB
CLASS AA CONCRETE					0.6 CY
BAR TYPES					
ALL BAR DIMENSIONS ARE OUT TO OUT					

NOTES:
 FOR CONCRETE INSERTS SEE "END OF RAIL DETAILS", SHEET 5 OF 5.
 THE TOTAL COST FOR THE END POSTS IN PLACE SHALL BE INCLUDED IN THE PRICE BID FOR LINEAR FEET OF 2 BAR METAL RAIL RETROFIT.
 ALL REINFORCING STEEL IN END POST SHALL BE EPOXY COATED.

PROJECT NO. U-3109A
ALAMANCE COUNTY
 STATION: 26+90.77 -SBL-

SHEET 2 OF 5

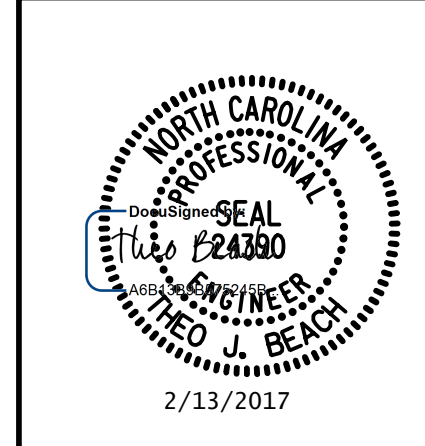
STATE OF NORTH CAROLINA
 DEPARTMENT OF TRANSPORTATION
 RALEIGH

RAIL POST SPACING AND END POST DETAILS FOR 2 BAR METAL RAIL RETROFIT

REVISIONS					
NO.	BY:	DATE:	NO.	BY:	DATE:
1			3		
2			4		

SHEET NO. S01-46
 TOTAL SHEETS S01-49

PLANS PREPARED BY:
SIMPSON & ASSOCIATES
 5640 Dillard Drive
 Suite 200
 Cary, NC 27518
 (919) 852-0468
 (919) 852-0598 (Fax)
 www.simpsonengr.com
 LICENSURE NO. C-2521



DRAWN BY: T. BANKOVICH DATE: 2-17
 CHECKED BY: B.S. COX DATE: 2-17
 DESIGN ENGINEER OF RECORD: T.J. BEACH DATE: 2-17