

**NOTES:**

FOR OTHER DESIGN DATA AND GENERAL NOTES, SEE SHEET SN.

THE PROPOSED END POSTS SHALL BE ATTACHED TO BOTH EXISTING BARRIER RAILS USING ADHESIVELY ANCHORED REINFORCING STEEL AS SHOWN, LEVEL ONE FIELD TESTING IS REQUIRED AND THE YIELD LOAD OF THE REINFORCING STEEL IS 3 KIPS. FOR ADHESIVELY ANCHORED REINFORCING, SEE THE STANDARD SPECIFICATIONS.

FOR SUBMITTAL OF WORKING DRAWINGS, SEE SPECIAL PROVISIONS.

FOR FALSEWORK AND FORMWORK, SEE SPECIAL PROVISIONS.

FOR CRANE SAFETY, SEE SPECIAL PROVISIONS.

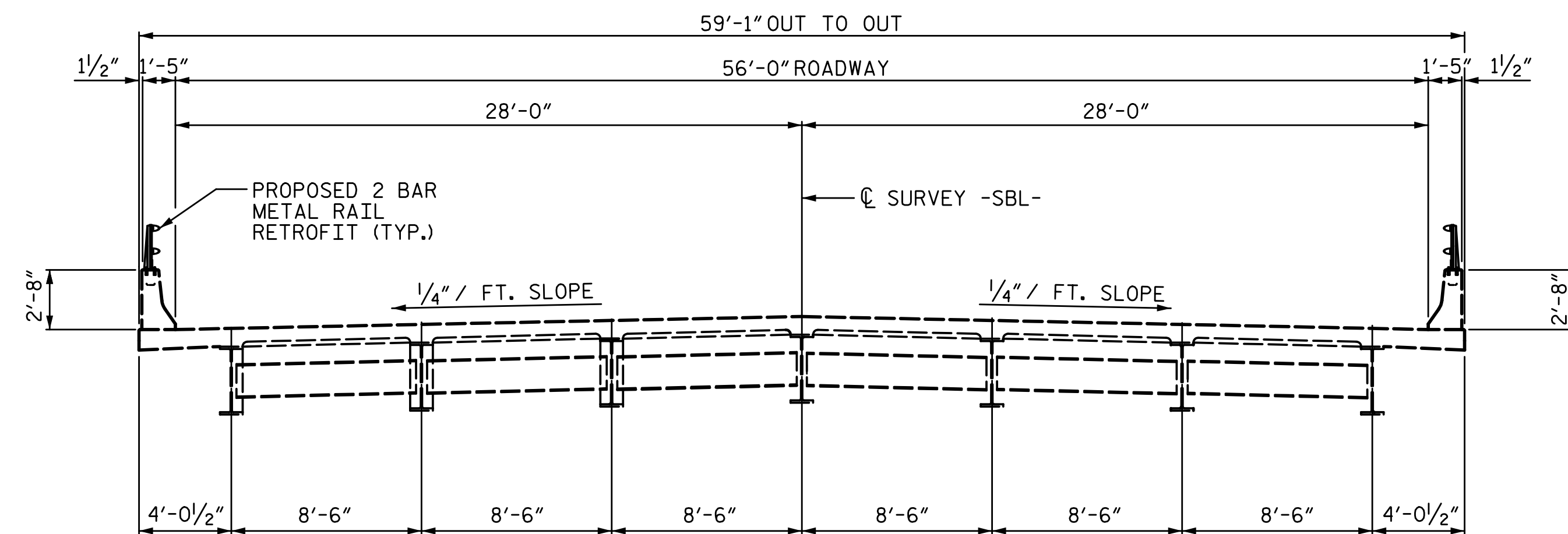
THE CONTRACTOR SHALL PROVIDE INDEPENDENT ASSURANCE SAMPLES OF REINFORCING STEEL AS FOLLOWS: FOR PROJECTS REQUIRING UP TO 400 TONS OF REINFORCING STEEL, ONE 30 INCH SAMPLE OF EACH SIZE BAR USED, AND FOR PROJECTS REQUIRING OVER 400 TONS OF REINFORCING STEEL, TWO 30 INCH SAMPLES OF EACH SIZE BAR USED. THE BARS FROM WHICH THE SAMPLES ARE TAKEN MUST THEN BE SPLICED WITH REPLACEMENT BARS OF THE SIZE AND LENGTH OF THE SAMPLE, PLUS A MINIMUM LAP SPLICE OF THIRTY BAR DIAMETERS. PAYMENT FOR THE SAMPLES OF REINFORCING STEEL SHALL BE CONSIDERED INCIDENTAL TO VARIOUS PAY ITEMS.

FOR MAINTENANCE AND PROTECTION OF TRAFFIC BENEATH PROPOSED STRUCTURE, SEE SPECIAL PROVISIONS.

FOR GROUT FOR STRUCTURES, SEE SPECIAL PROVISIONS.

THE BARRIER RAIL DIMENSIONS OF THE EXISTING BRIDGE INDICATED ON THE PLANS ARE FROM THE BEST INFORMATION AVAILABLE, SINCE THE INFORMATION IS SHOWN FOR THE CONVENIENCE OF THE CONTRACTOR, THE CONTRACTOR SHALL HAVE NO CLAIM WHATSOEVER AGAINST THE DEPARTMENT OF TRANSPORTATION FOR ANY DELAYS OF ADDITIONAL COST INCURRED BASED ON DIFFERENCE BETWEEN THE EXISTING BRIDGE SHOWN ON THE PLANS AND THE ACTUAL CONDITIONS AT THE PROJECT SITE.

2 BAR METAL RAIL RETROFIT = 426.69 LF



PROJECT NO. U-3109A  
ALAMANCE COUNTY  
 STATION: 26+90.77 -SBL-

SHEET 1 OF 5 BRIDGE #16

STATE OF NORTH CAROLINA  
 DEPARTMENT OF TRANSPORTATION  
 RALEIGH

**EXISTING BRIDGE #16**

SBL BRIDGE ON NC 119  
 OVER I40-85 WB AND I40-85 EB  
 BETWEEN SR 1981 AND SR 1980

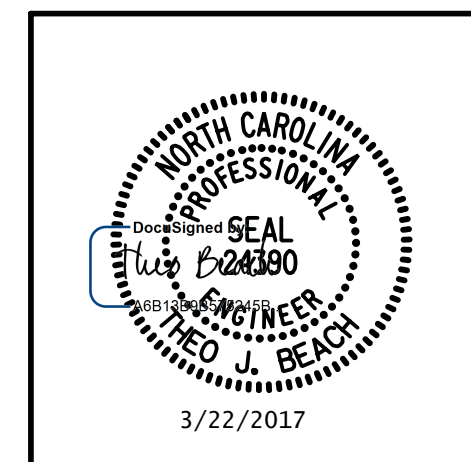
REVISIONS

NO.	BY:	DATE:	NO.	BY:	DATE:
1			3		
2			4		

SHEET NO.  
 S01-45  
 TOTAL SHEETS  
 S01-49

PLANS PREPARED BY:

**SIMPSON ENGINEERS & ASSOCIATES**  
 5640 Dillard Drive  
 Suite 200  
 Cary, NC 27518  
 (919) 852-0468  
 (919) 852-0598 (Fax)  
 www.simpsonengr.com  
 LICENSURE NO. C-2521



3/22/2017 11:16:44 AM G:\Projects\2014\U-3109A\Structures\Site 1-Bridge 16 (SBL)\Drawings\401\_U3109A\_SMU\_GD.dgn

DRAWN BY: T. BANKOVICH DATE: 2-17  
 CHECKED BY: B.S. COX DATE: 2-17  
 DESIGN ENGINEER OF RECORD: T.J. BEACH DATE: 2-17