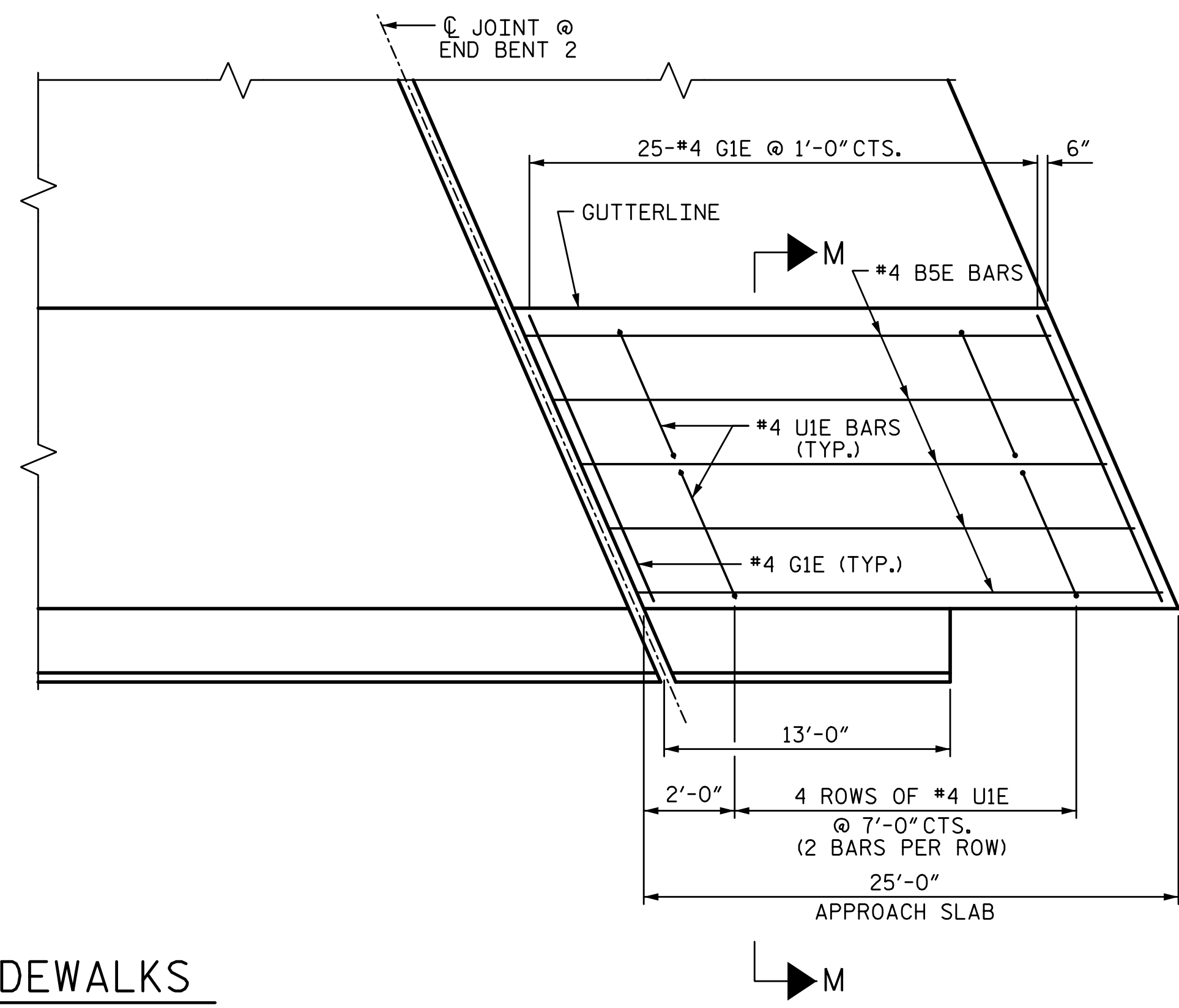
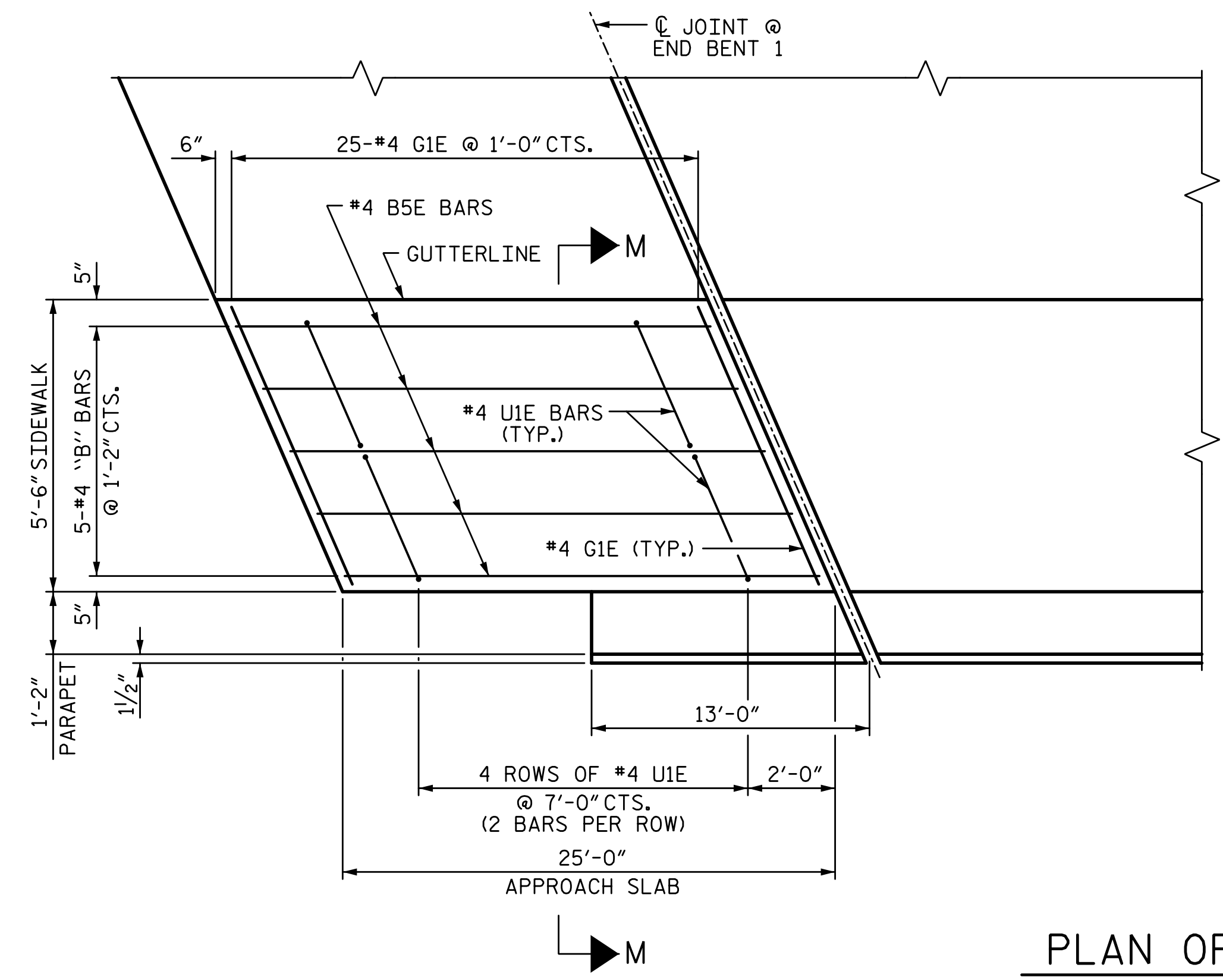
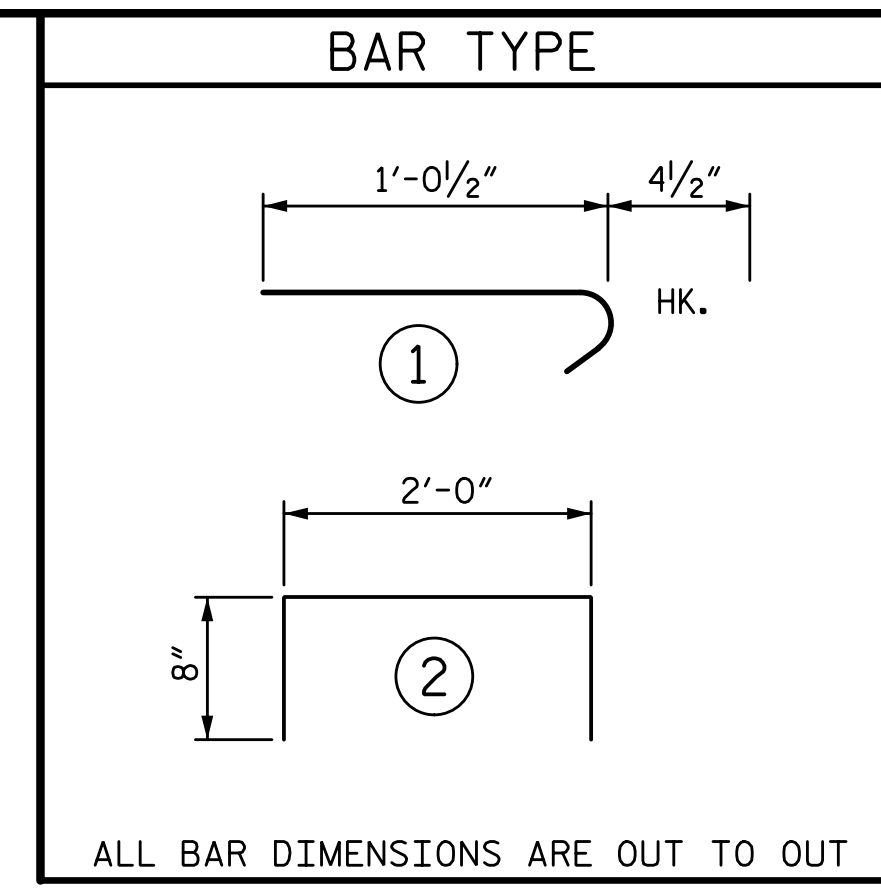


2/10/2017 9:09:10 AM G:\Projects\2014\U-3109A\Structures\Site 1-Bridge 434 (NBL)\Drawings\Final\401_U3109A_SMU_AS.dgn



PLAN OF SIDEWALKS

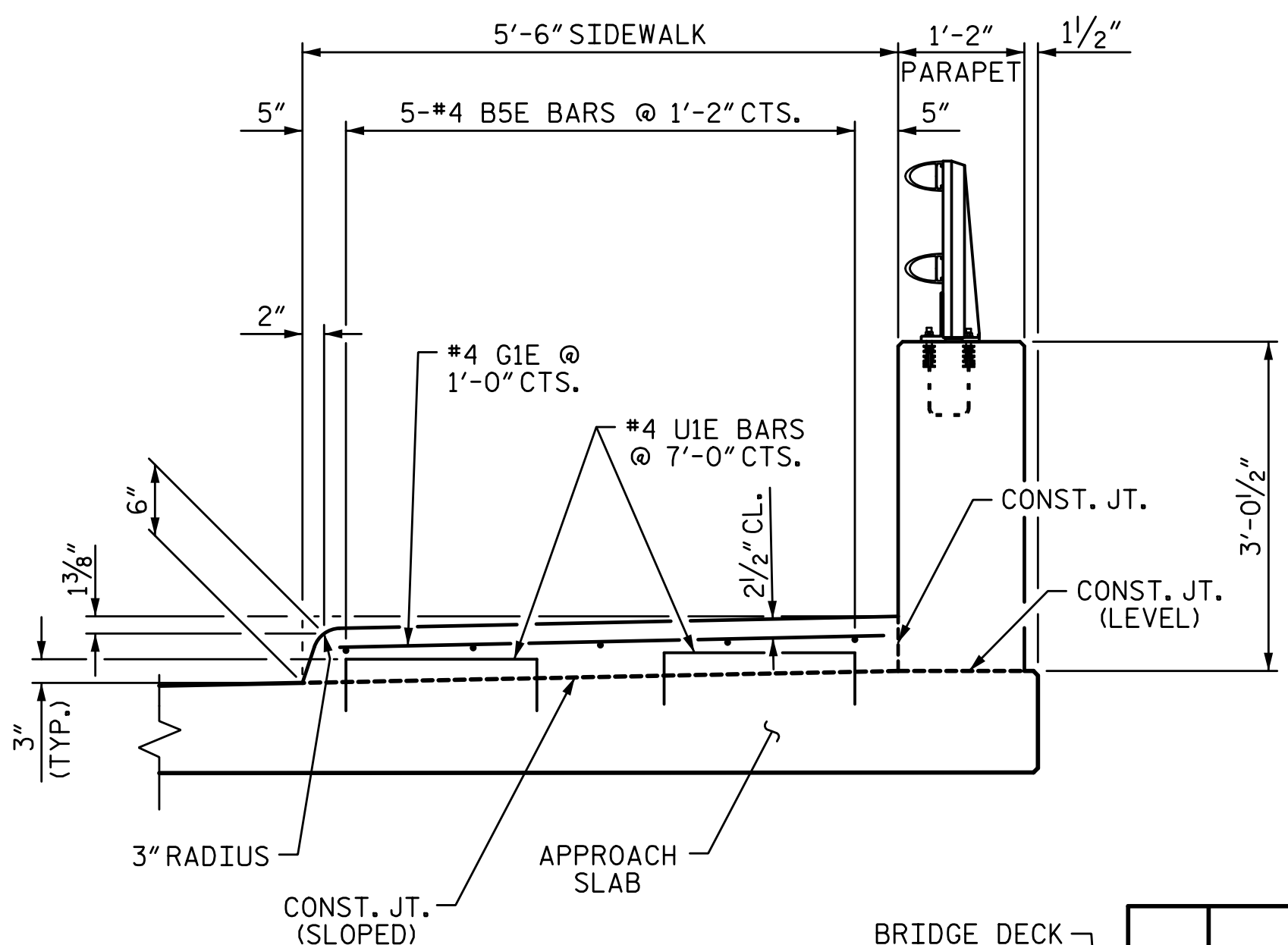


ALL BAR DIMENSIONS ARE OUT TO OUT

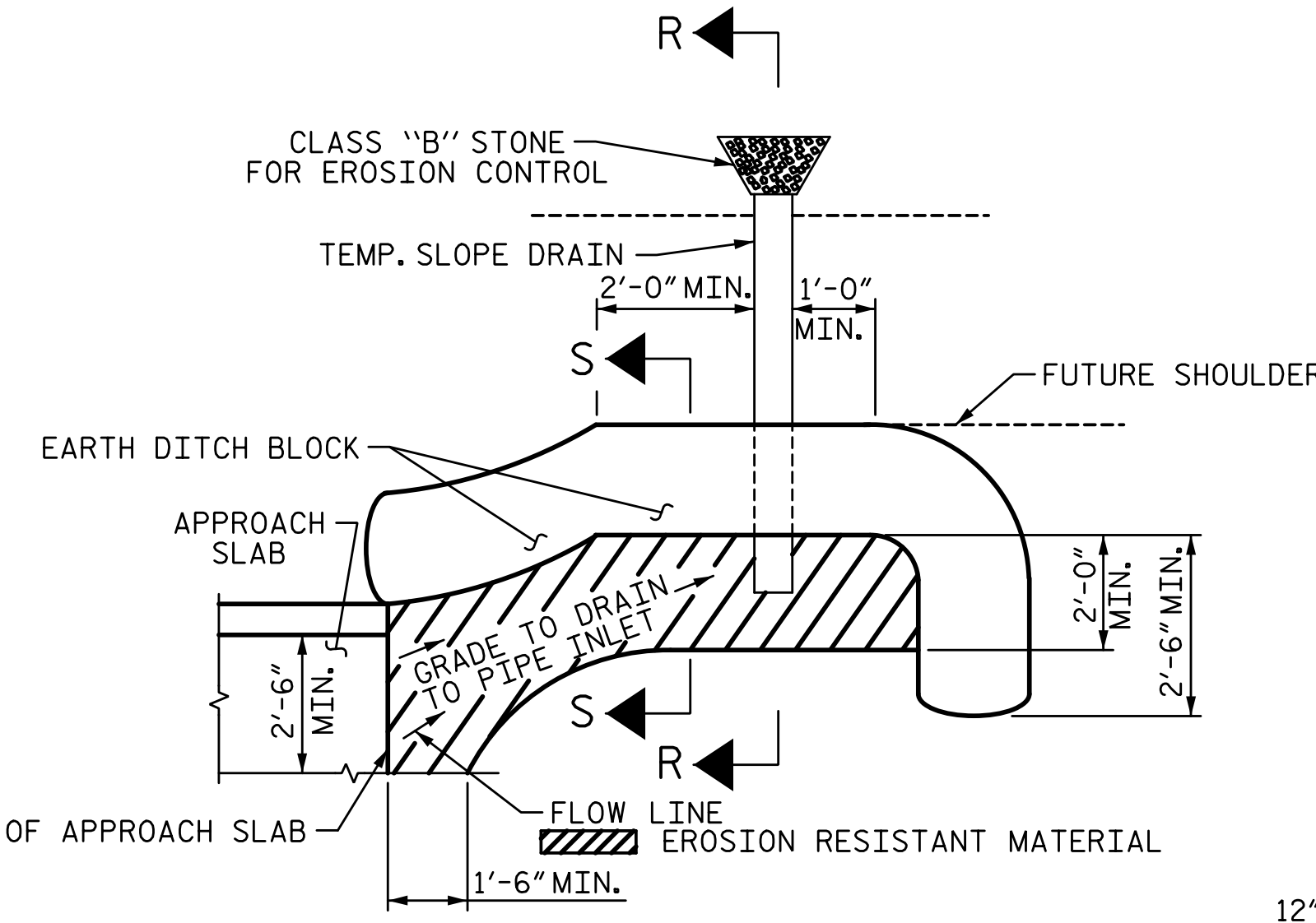
THE QUANTITY OF #4 JIE BARS ON THE BILL OF MATERIAL IS BASED ON 1'-0" CENTERS. JIE BARS SHALL BE PLACED AT EACH VERTICAL STUD ANCHOR BOLT. IN THE EVENT THAT THE NUMBER OF VERTICAL STUD ANCHORS EXCEEDS THE NUMBER OF JIE BARS SPECIFIED, ADDITIONAL JIE BARS WILL NOT BE REQUIRED.

BILL OF MATERIAL					
APPROACH SLAB AT EB 1					
BAR NO.	SIZE	TYPE	LENGTH	WEIGHT	
A1E	75	4	STR	22'-4"	1119
A2	78	4	STR	22'-2"	1155
B1E	112	5	STR	23'-11"	2794
B2	112	6	STR	24'-7"	4136
B3E	3	5	STR	12'-0"	38
B4	3	6	STR	12'-0"	54
B5E	5	4	STR	24'-6"	82
G1E	25	4	STR	5'-7"	93
J1E	55	4	1	1'-5"	52
U1E	8	4	2	3'-4"	18
REINFORCING STEEL					5345 LB
EPOXY COATED REINFORCING STEEL					4196 LB
CLASS "AA" CONCRETE BREAKDOWN					
POUR 1 (SLAB & CURB) **					62.0 CY
POUR 2 (SIDEWALK) **					2.5 CY
TOTAL					64.5 CY

BILL OF MATERIAL					
APPROACH SLAB AT EB 2					
BAR NO.	SIZE	TYPE	LENGTH	WEIGHT	
A1E	75	4	STR	22'-4"	1119
A2	78	4	STR	22'-2"	1155
B1E	112	5	STR	23'-11"	2794
B2	112	6	STR	24'-7"	4136
B3E	3	5	STR	12'-0"	38
B4	3	6	STR	12'-0"	54
B5E	5	4	STR	24'-6"	82
G1E	25	4	STR	5'-7"	93
J1E	55	4	1	1'-5"	52
U1E	8	4	2	3'-4"	18
REINFORCING STEEL					5345 LB
EPOXY COATED REINFORCING STEEL					4196 LB
CLASS "AA" CONCRETE BREAKDOWN					
POUR 1 (SLAB & CURB) **					62.0 CY
POUR 2 (SIDEWALK) **					2.5 CY
TOTAL					64.5 CY

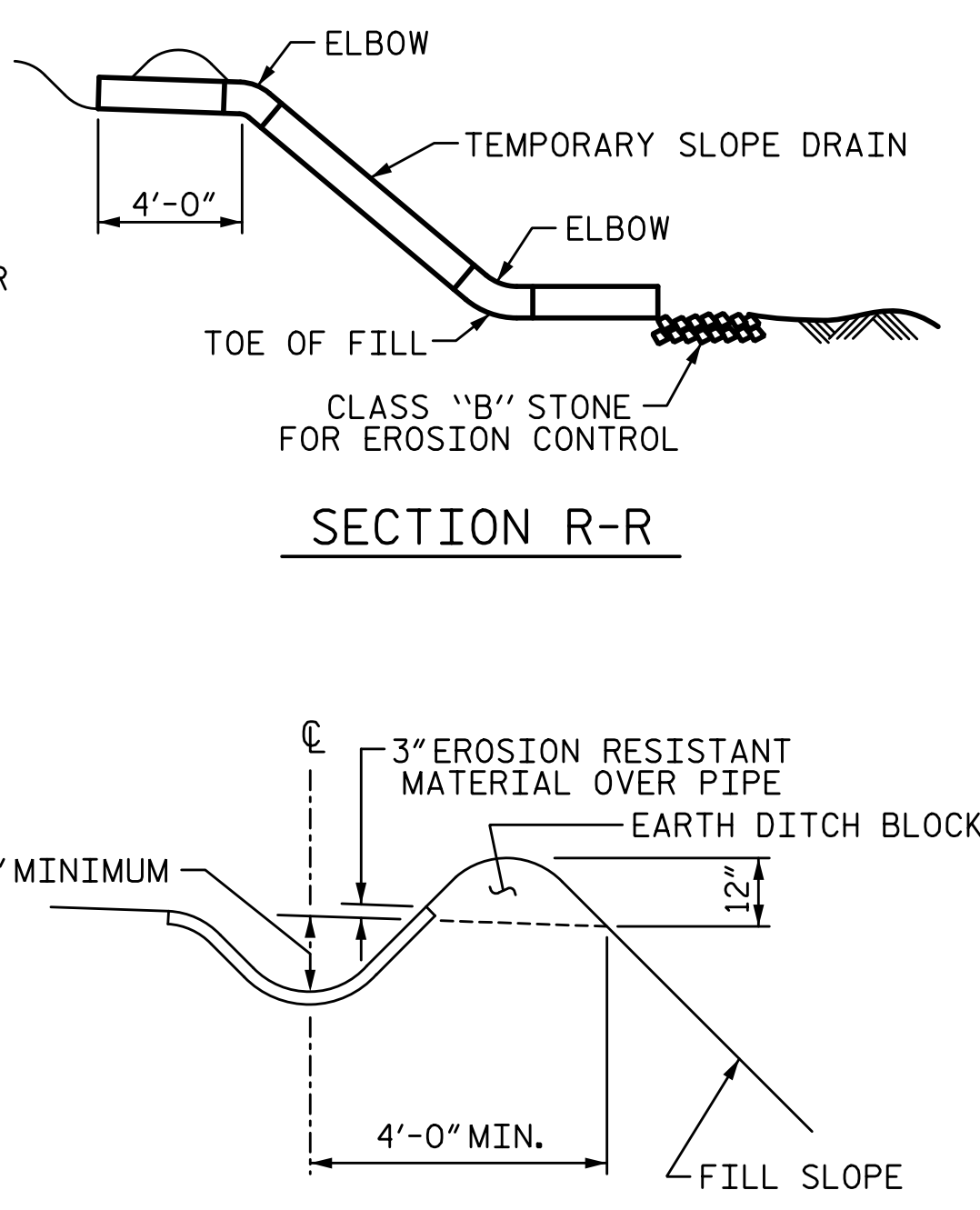


SECTION M-M
SIDEWALK DETAILS

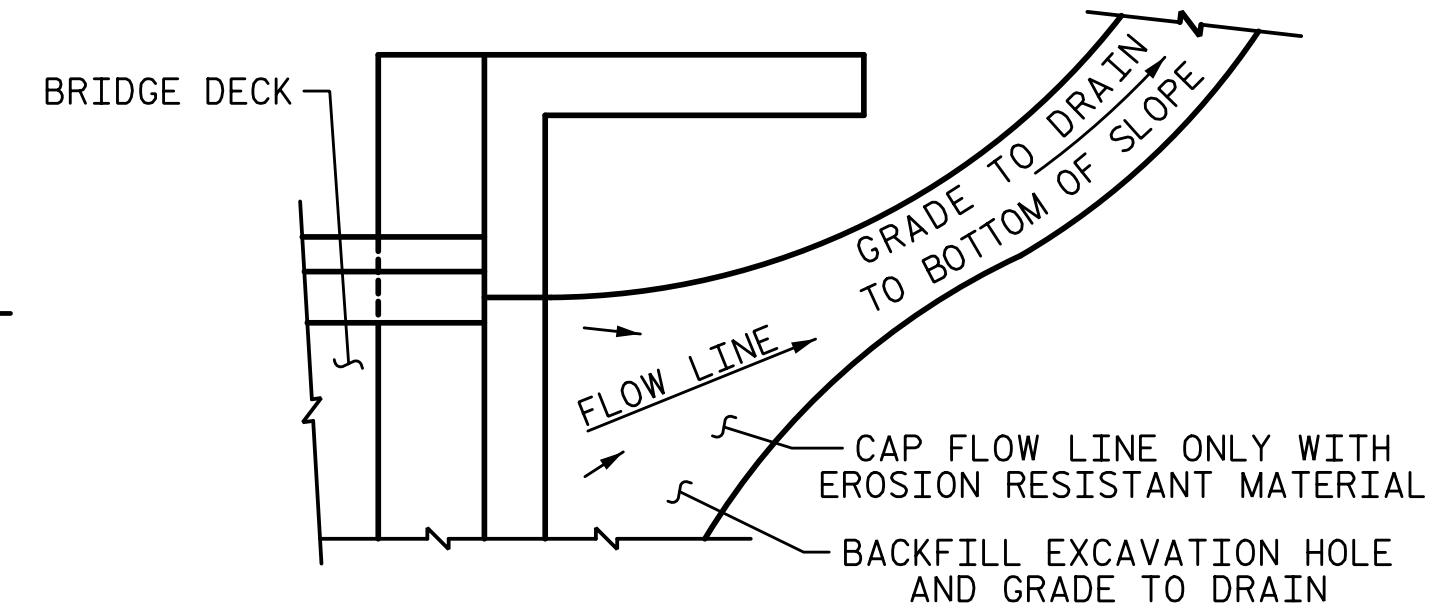


NOTE: IMMEDIATELY AFTER THE CONSTRUCTION OF THE APPROACH SLAB, THE CONTRACTOR SHALL PROVIDE TEMPORARY BERM AND SLOPE DRAIN. CONTRACTOR SHALL GRADE TO PIPE INLET AND PROVIDE EROSION RESISTANT MATERIAL AS SHOWN. THE EROSION RESISTANT MATERIAL SHALL BE EITHER 1) ASPHALT PLANT MIX, TYPE 1 OR TYPE 2, MIN. 2" DEPTH, 2) EROSION CONTROL MAT, OR 3) CONCRETE, AS DIRECTED BY THE ENGINEER. THE SLOPE DRAIN SHALL CONSIST OF A NON-PERFORATED TEMPORARY DRAINAGE PIPE, 12 INCHES IN DIAMETER.

PLAN VIEW



SECTION S-S



NOTE: IF THE APPROACH SLAB IS NOT CONSTRUCTED IMMEDIATELY AFTER THE BACKFILLING OF THE END BENT EXCAVATION, GRADE TO DRAIN TO THE BOTTOM OF THE SLOPE AND PROVIDE EROSION RESISTANT MATERIAL, SUCH AS FIBERGLASS ROVING OR AS DIRECTED BY THE ENGINEER TO PREVENT SOIL EROSION AND TO PROTECT THE AREA ADJACENT TO THE STRUCTURE. THE CONTRACTOR WILL BE REQUIRED TO REMOVE THESE MATERIALS PRIOR TO CONSTRUCTION OF THE APPROACH SLAB.

TEMPORARY DRAINAGE DETAIL

TEMPORARY BERM AND SLOPE DRAIN DETAILS
(TO BE USED WHEN SHOULDER BERM GUTTER IS REQUIRED)

PLANS PREPARED BY:
SIMPSON & ASSOCIATES
5640 Dillard Drive
Suite 200
Cary, NC 27518
(919) 852-0468
(919) 852-0598 (Fax)
www.simpsonengr.com
LICENSURE NO. C-2521



PROJECT NO. U-3109A
ALAMANCE COUNTY
STATION: 26+54.73 -NBL-

SHEET 2 OF 2

STATE OF NORTH CAROLINA DEPARTMENT OF TRANSPORTATION RALEIGH					
BRIDGE APPROACH SLAB DETAILS					
REVISIONS					
NO.	BY:	DATE:	NO.	BY:	DATE:
1			3		
2			4		

SHEET NO. S01-44	
TOTAL SHEETS S01-49	

DRAWN BY: <u>S. D. COOPER</u>	DATE: <u>5-15</u>
CHECKED BY: <u>B.S. COX</u>	DATE: <u>5-15</u>
DESIGN ENGINEER OF RECORD: <u>T.J. BEACH</u>	DATE: <u>5-15</u>