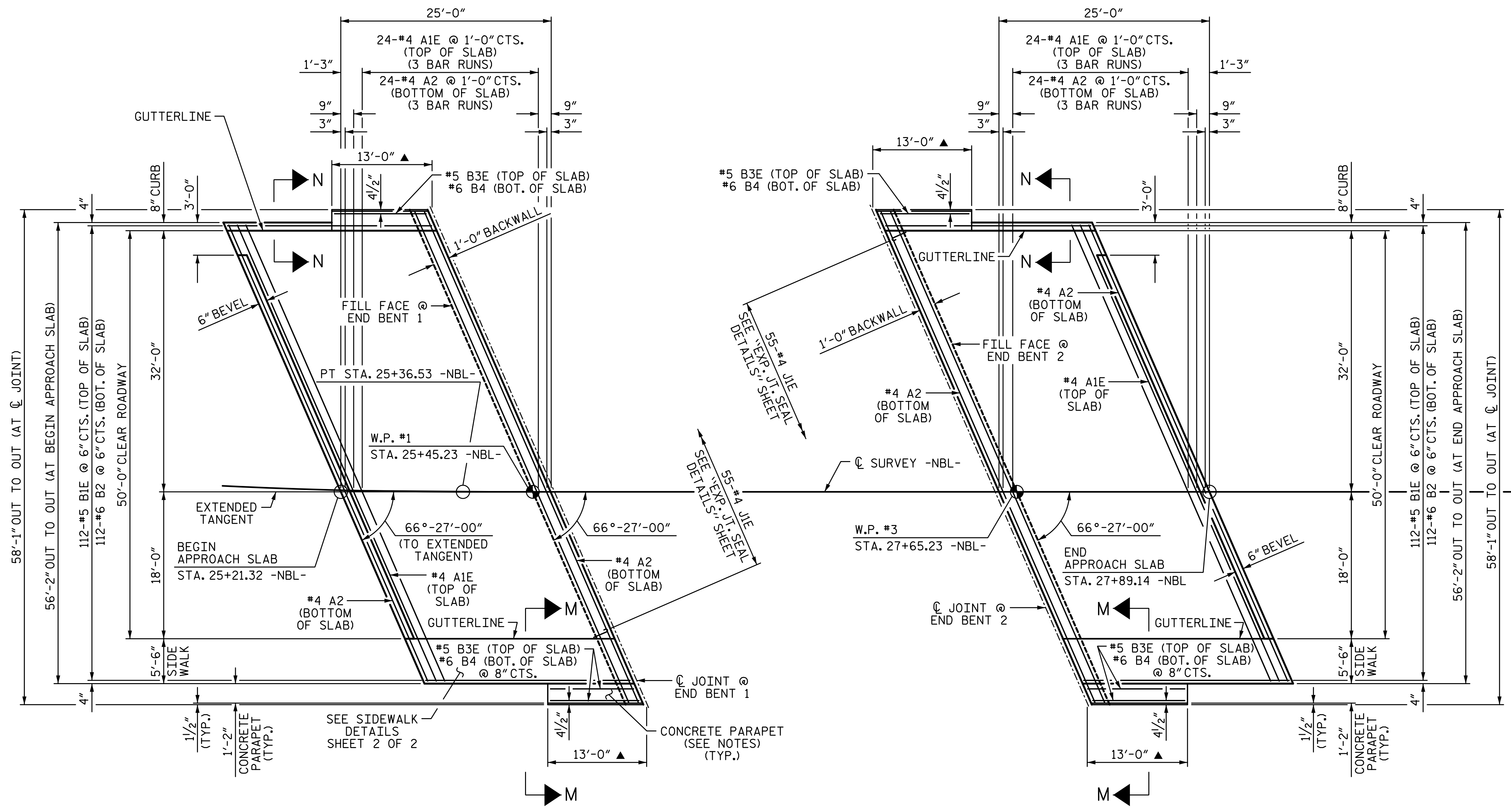


2/10/2017 9:09:10 AM G:\Projects\2014\U-3109A\Structures\Site 1-Bridge 434 (NBL)\Drawings\Final\401\_U3109A\_SML\_AS.dgn

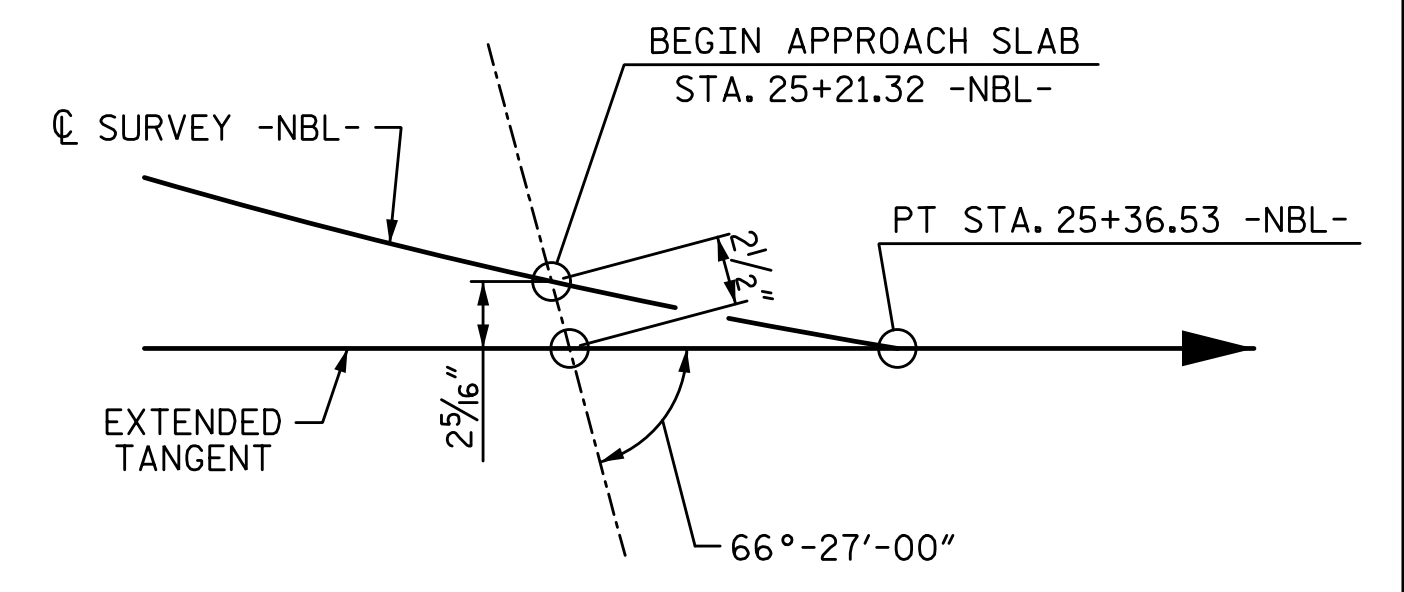


PLAN @ END BENT 1

PLAN @ END BENT 2

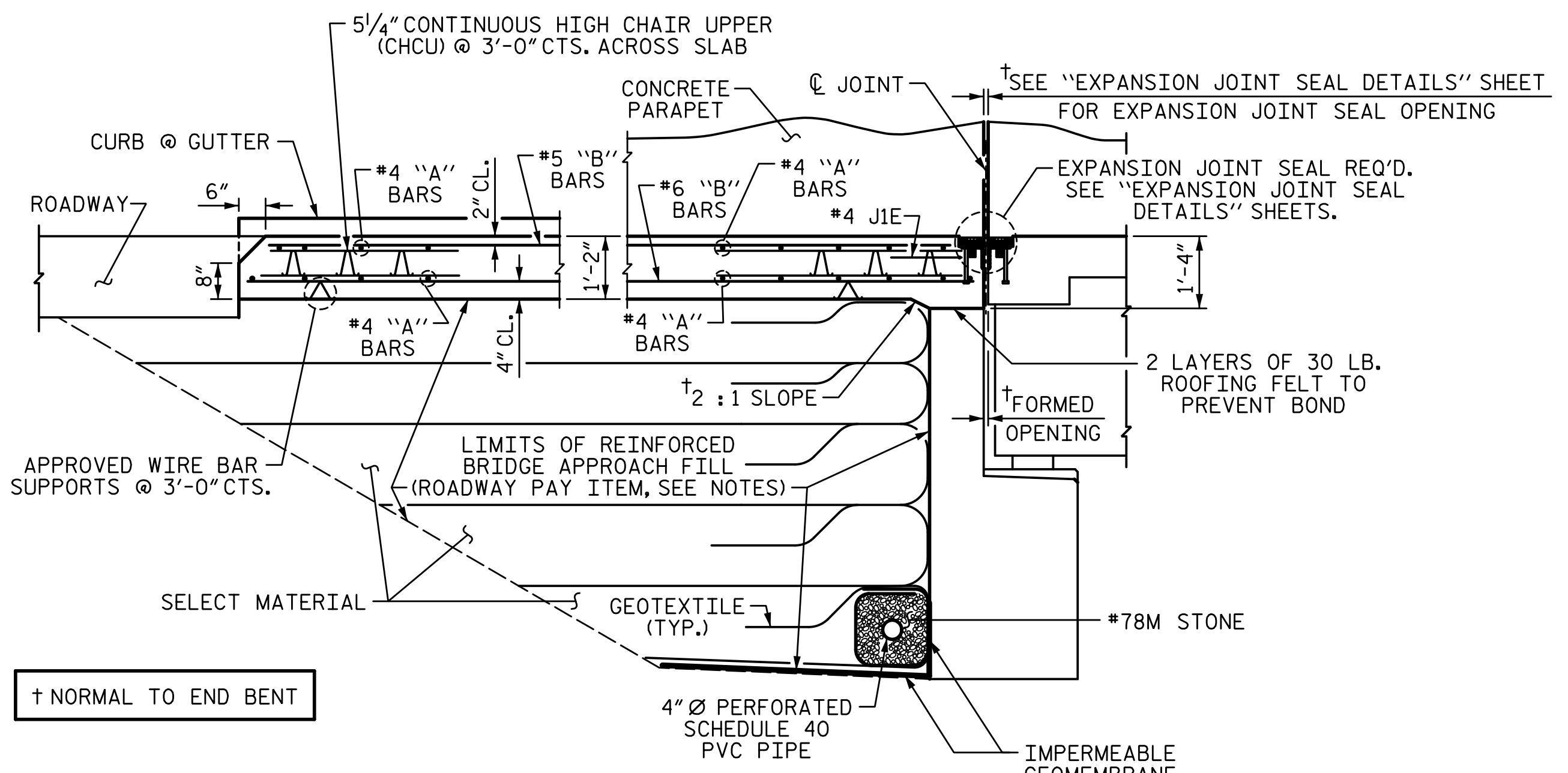
**NOTES:**

- APPROACH SLAB SHALL NOT BE CONSTRUCTED PRIOR TO COMPLETION OF THE BRIDGE DECK.
- FOR REINFORCED BRIDGE APPROACH FILL INCLUDING GEOTEXTILE, IMPERMEABLE GEOMEMBRANE, 4" Ø DRAINAGE PIPE, #78M STONE, AND SELECT MATERIAL, SEE ROADWAY PLANS.
- AREA BETWEEN THE WINGWALL AND APPROACH SLAB SHALL BE GRADED TO DRAIN THE WATER AWAY FROM THE FILL FACE OF THE BRIDGE AND SHALL BE PAVED. SEE ROADWAY PLANS.
- "A" BARS IN APPROACH SLAB @ END BENT 1 SHALL BE SPACED ALONG EXTENDED TANGENT AND PLACED PARALLEL TO FILL FACE.
- BOTH OUTSIDE EDGES OF APPROACH SLAB AT END BENT 1 ARE PARALLEL TO EXTENDED TANGENT.
- FOR CONCRETE PARAPET DETAILS, DIMENSIONS AND PAY ITEM, SEE "CONCRETE PARAPET DETAILS" SHEETS.
- FOR EXPANSION JOINT SEALS, SEE SPECIAL PROVISIONS.
- ▲ MEASURED FROM C/J JOINT ALONG OUTSIDE FACE OF CONCRETE PARAPET.

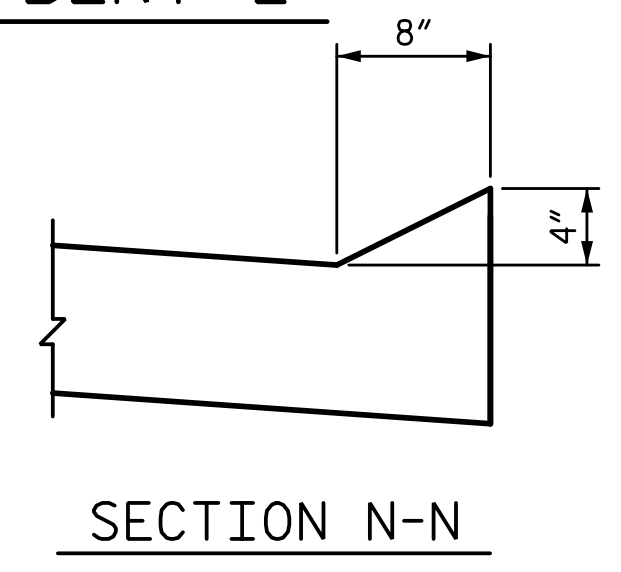


EXTENDED TANGENT LAYOUT

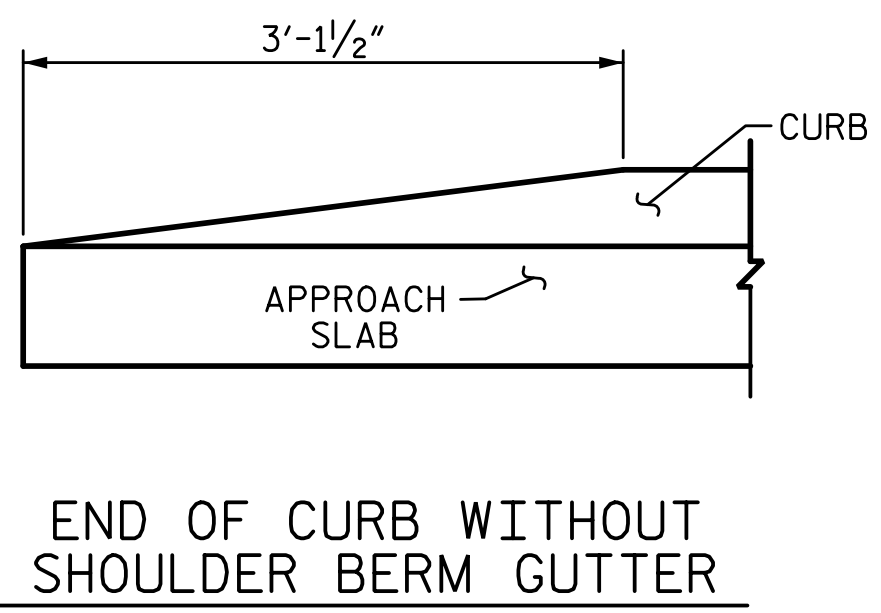
SPLICE CHART		
BAR SIZE	EPOXY COATED	UNCOATED
#4	2'-0"	1'-9"
#5	2'-6"	2'-2"
#6	3'-10"	2'-7"



SECTION THRU SLAB



SECTION N-N



CURB DETAILS

PROJECT NO. U-3109A  
ALAMANCE COUNTY  
 STATION: 26+54.73 -NBL-

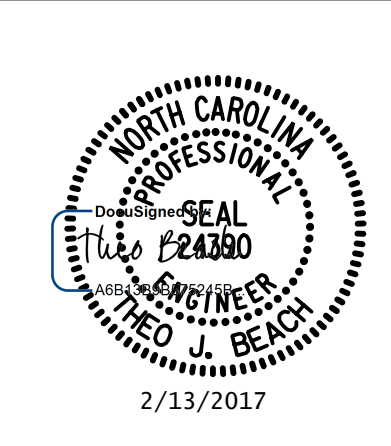
SHEET 1 OF 2

STATE OF NORTH CAROLINA  
 DEPARTMENT OF TRANSPORTATION  
 RALEIGH

BRIDGE APPROACH SLAB

REVISIONS						SHEET NO. S01-43
NO.	BY:	DATE:	NO.	BY:	DATE:	
1			3			TOTAL SHEETS S01-49
2			4			

PLANS PREPARED BY:  
**SIMPSON ENGINEERS & ASSOCIATES**  
 5640 Dillard Drive  
 Suite 200  
 Cary, NC 27518  
 (919) 852-0468  
 (919) 852-0598 (Fax)  
 www.simpsonengr.com  
 LICENSURE NO. C-2521



DRAWN BY: S. D. COOPER DATE: 5-15  
 CHECKED BY: B.S. COX DATE: 5-15  
 DESIGN ENGINEER OF RECORD: T.J. BEACH DATE: 5-15