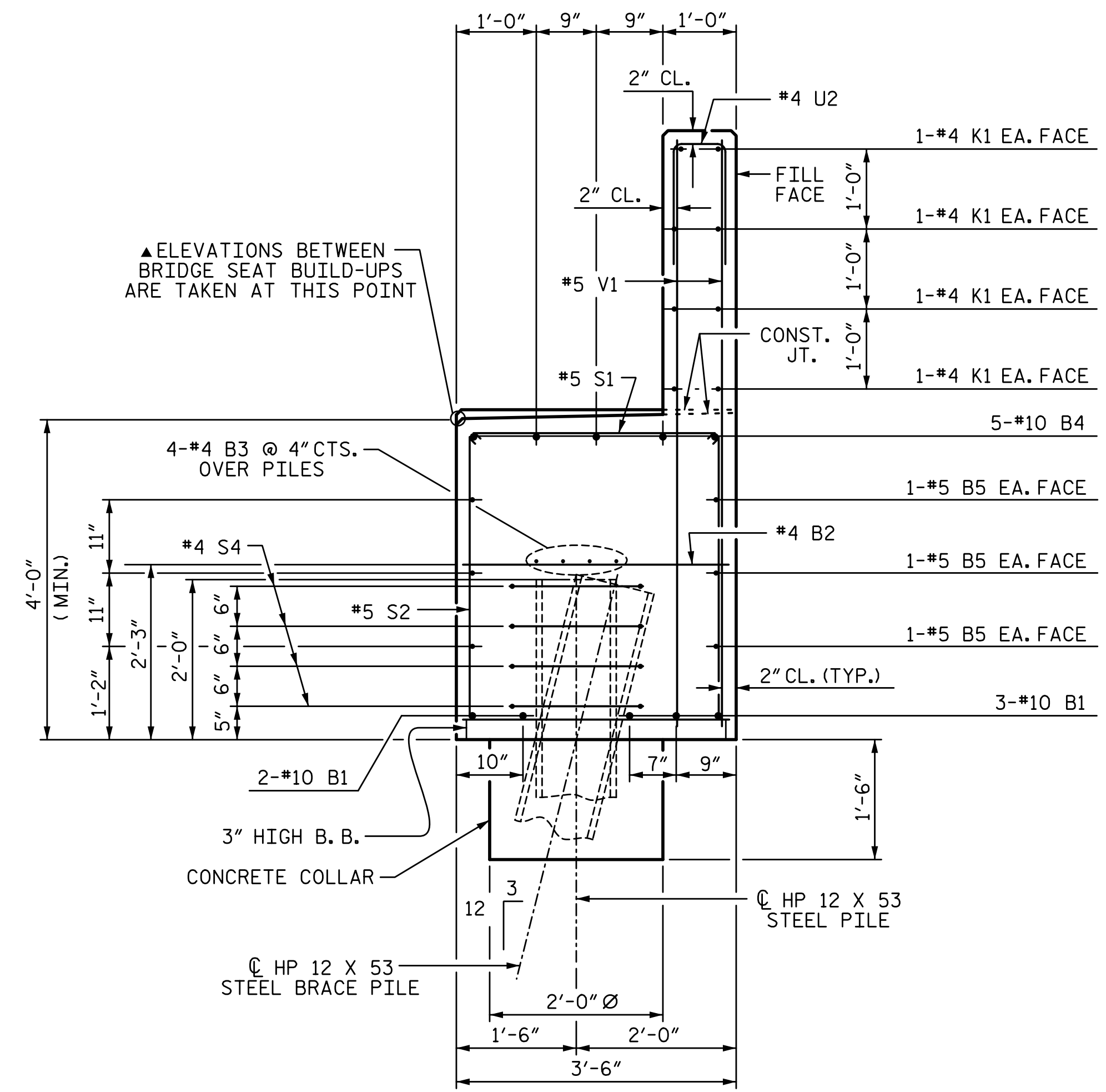
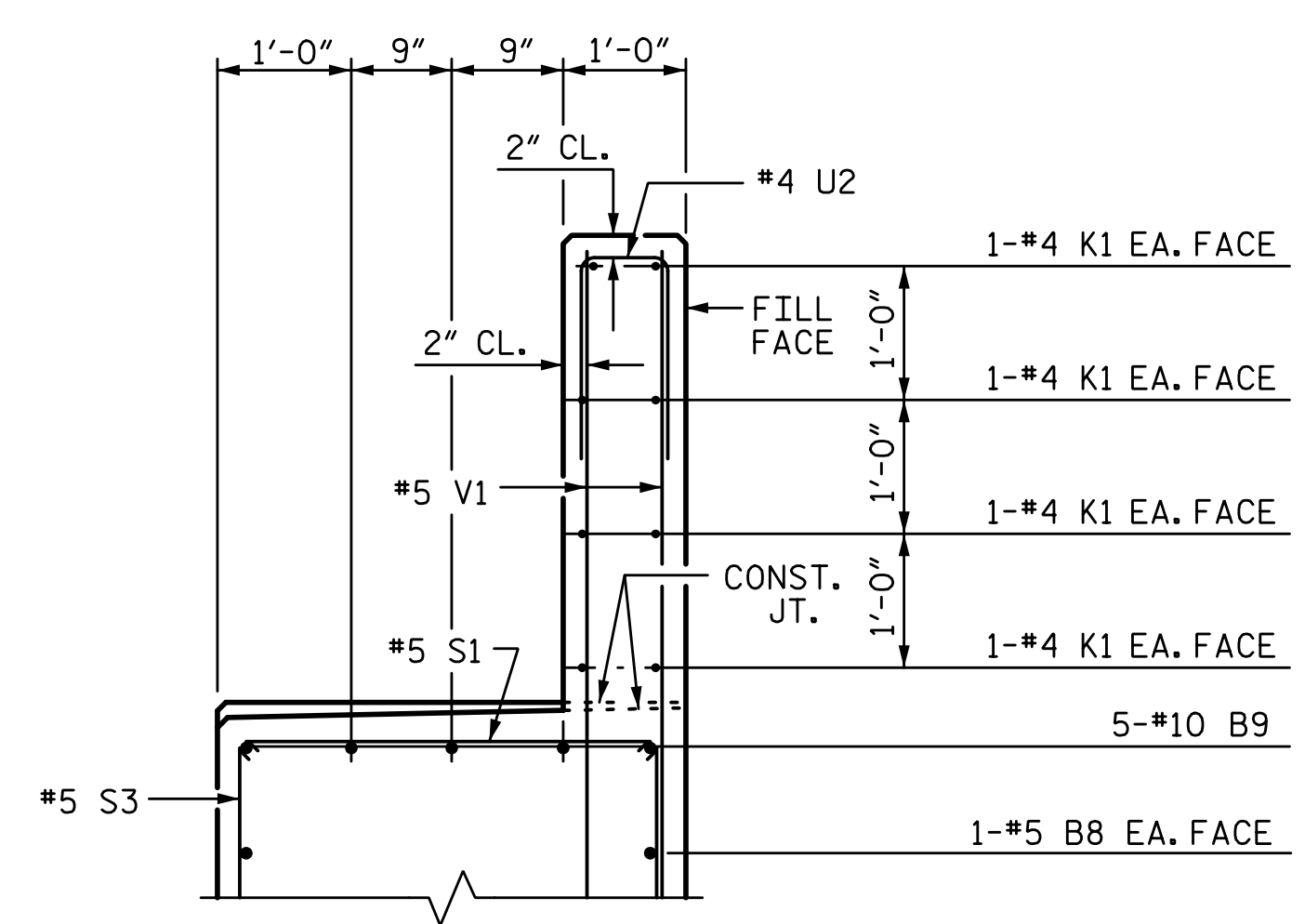


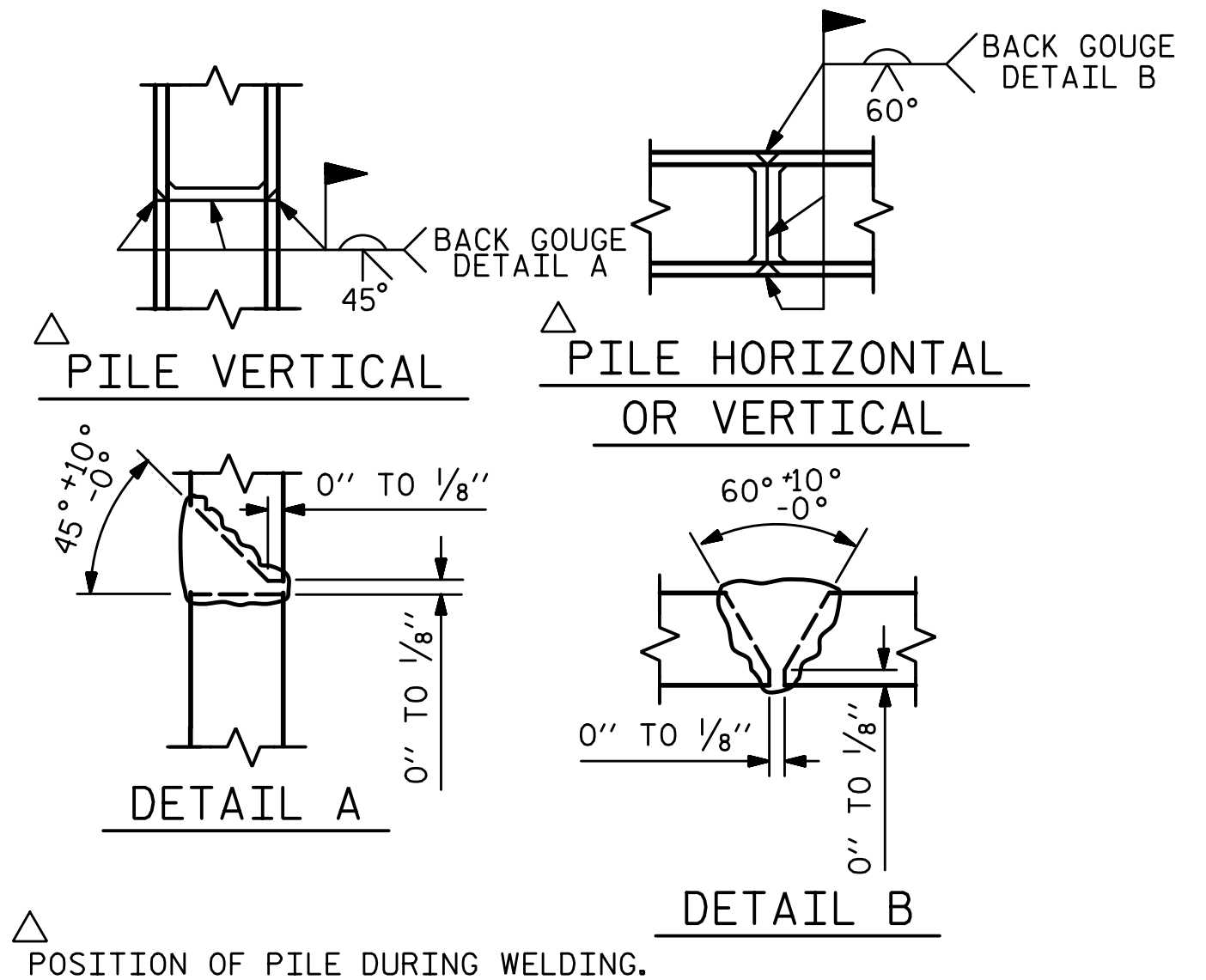
2/10/2017 9:09:09 AM G:\Projects\2014\U-3109A\Structures\Site 1-Bridge 434 (NBL)\Drawings\Final\401_U3109A_SMU_EB2.dgn



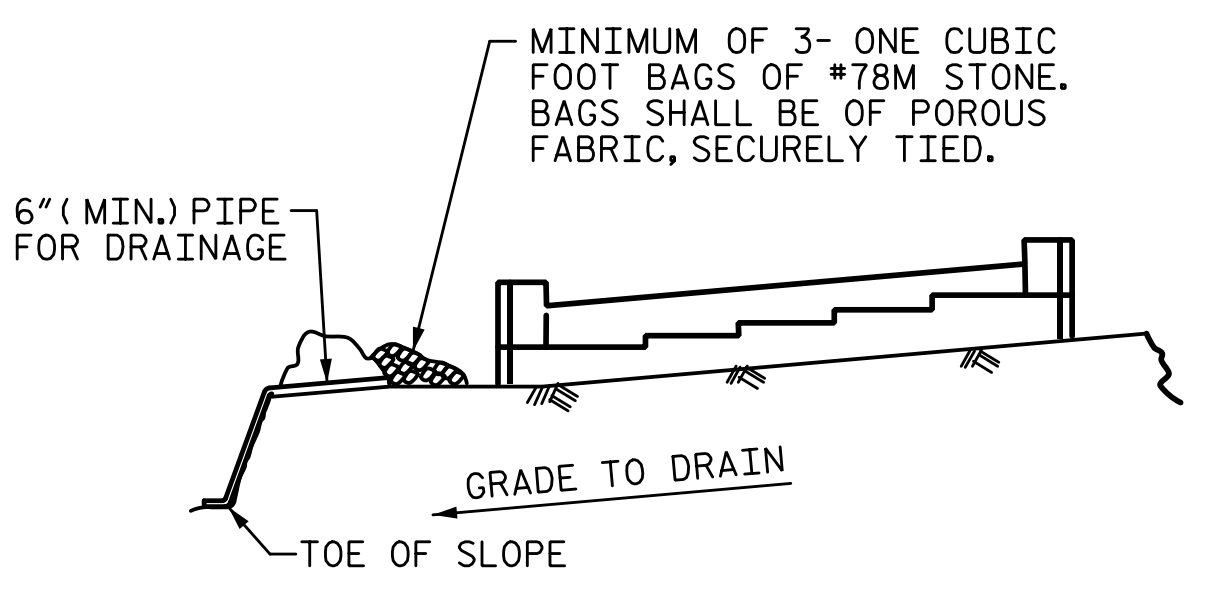
SECTION A-A



SECTION B-B



PILE SPLICE DETAILS

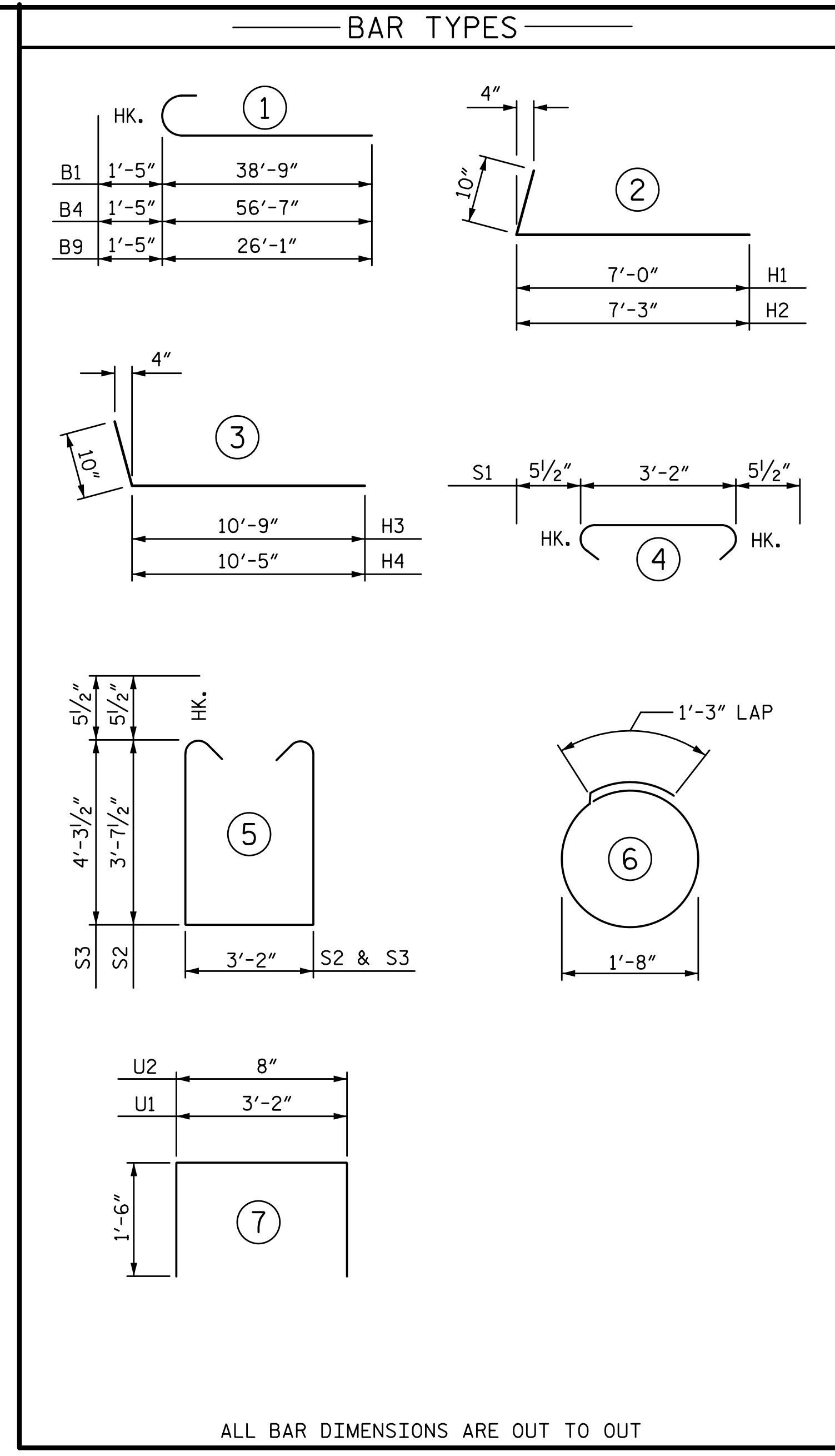


BAGGED STONE AND PIPE SHALL BE PLACED IMMEDIATELY AFTER COMPLETION OF END BENT EXCAVATION. PIPE MAY BE EITHER CONCRETE, CORRUGATED STEEL, CORRUGATED ALUMINUM ALLOY, OR CORRUGATED PLASTIC. PERFORATED PIPE WILL NOT BE ALLOWED.

BAGGED STONE SHALL REMAIN IN PLACE UNTIL THE ENGINEER DIRECTS THAT IT BE REMOVED. THE CONTRACTOR SHALL REMOVE AND DISPOSE OF SILT ACCUMULATIONS AT BAGGED STONE WHEN SO DIRECTED BY THE ENGINEER. BAGS SHALL BE REMOVED AND REPLACED WHENEVER THE ENGINEER DETERMINES THAT THEY HAVE DETERIORATED AND LOST THEIR EFFECTIVENESS.

NO SEPARATE PAYMENT WILL BE MADE FOR THIS WORK AND THE ENTIRE COST OF THIS WORK SHALL BE INCLUDED IN THE UNIT CONTRACT PRICE BID FOR THE SEVERAL PAY ITEMS.

TEMPORARY DRAINAGE AT END BENT



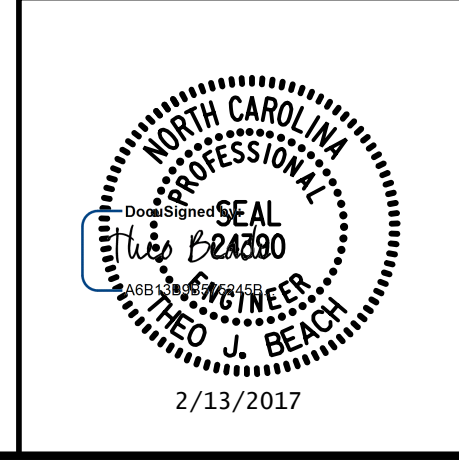
ALL BAR DIMENSIONS ARE OUT TO OUT

BILL OF MATERIAL					
END BENT 2					
BAR	NO.	SIZE	TYPE	LENGTH	WEIGHT
B1	10	10		40'-2"	1728
B2	12	4	STR	24'-10"	199
B3	21	4	STR	3'-2"	44
B4	5	10	1	58'-0"	1248
B5	12	5	STR	36'-4"	455
B6	15	4	STR	2'-4"	23
B7	10	4	STR	9'-0"	60
B8	2	5	STR	16'-1"	34
B9	5	10	1	27'-6"	592
H1	13	5	2	7'-10"	106
H2	13	5	2	8'-1"	110
H3	14	5	3	11'-7"	169
H4	14	5	3	11'-3"	164
K1	24	4	STR	24'-10"	398
K2	8	4	STR	2'-10"	15
S1	65	5	4	4'-1"	277
S2	40	5	5	11'-4"	473
S3	25	5	5	12'-8"	330
S4	32	4	6	6'-6"	139
U1	21	4	7	6'-2"	87
U2	64	4	7	3'-8"	157
V1	128	5	STR	7'-2"	957
V2	24	4	STR	8'-7"	138
V3	30	4	STR	9'-8"	194

TOTAL REINFORCING STEEL		8097 LB
CLASS "A" CONCRETE BREAKDOWN		
POUR 1		
(CAP, COLLARS, & LOWER WINGS)	44.6 CY	
POUR 2		
(BACKWALL AND UPPER WINGS)	12.9 CY	
TOTAL CLASS "A" CONCRETE		57.5 CY
HP 12 X 53 STEEL PILES		
NO. 8	480 LF	

DRAWN BY: S. D. COOPER DATE: 5-15
 CHECKED BY: B.S. COX DATE: 5-15
 DESIGN ENGINEER OF RECORD: T.J. BEACH DATE: 5-15

PLANS PREPARED BY:
SIMPSON ENGINEERS & ASSOCIATES
 5640 Dillard Drive
 Suite 200
 Cary, NC 27518
 (919) 852-0468
 (919) 852-0598 (Fax)
 www.simpsonengr.com
 LICENSURE NO. C-2521



PROJECT NO. U-3109A
ALAMANCE COUNTY
 STATION: 26+54.73 -NBL-

SHEET 3 OF 3

STATE OF NORTH CAROLINA DEPARTMENT OF TRANSPORTATION RALEIGH SUBSTRUCTURE					
END BENT 2					
REVISIONS					
NO.	BY:	DATE:	NO.	BY:	DATE:
1			3		
2			4		

SHEET NO. S01-41
 TOTAL SHEETS S01-49