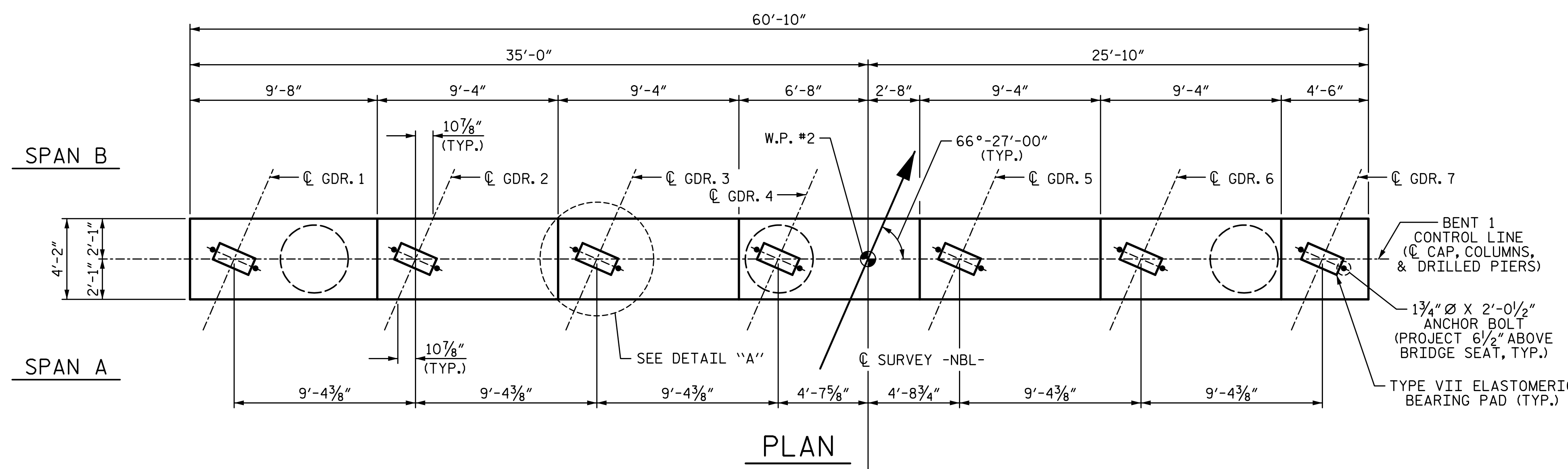


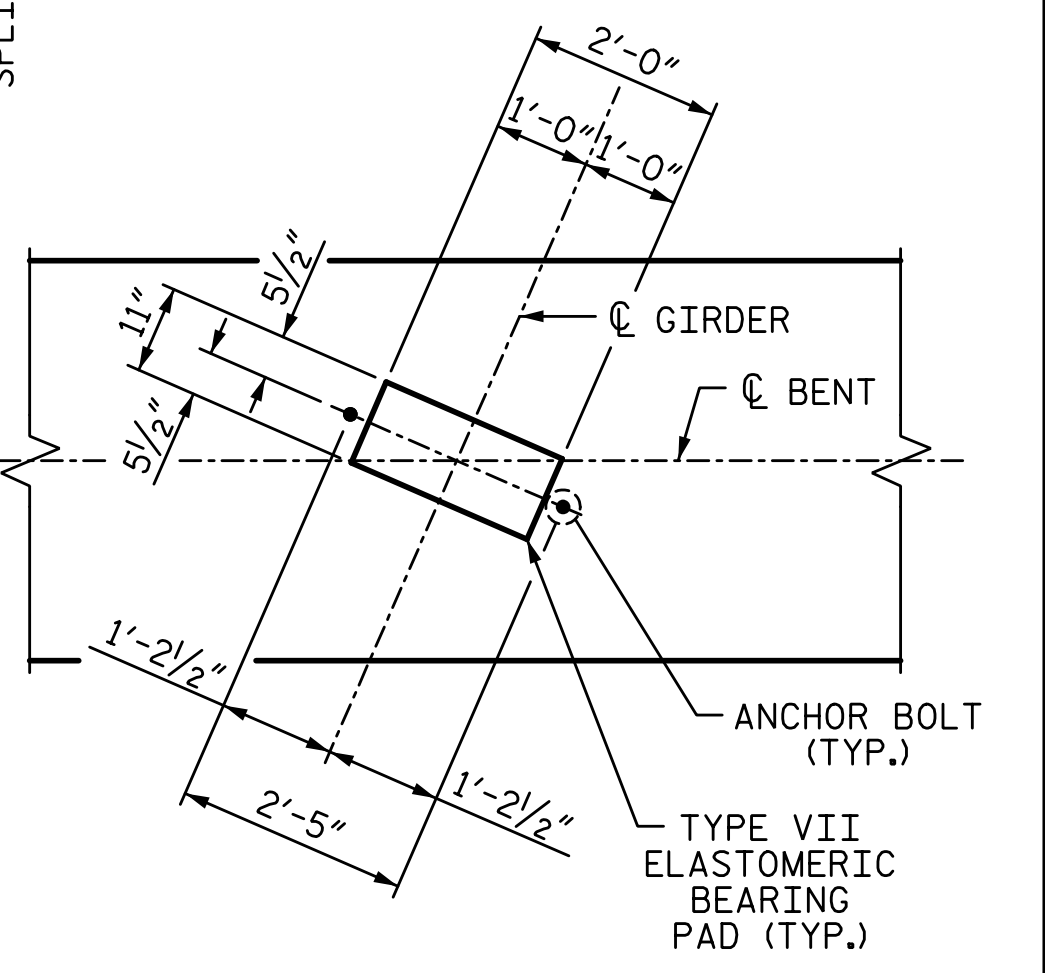
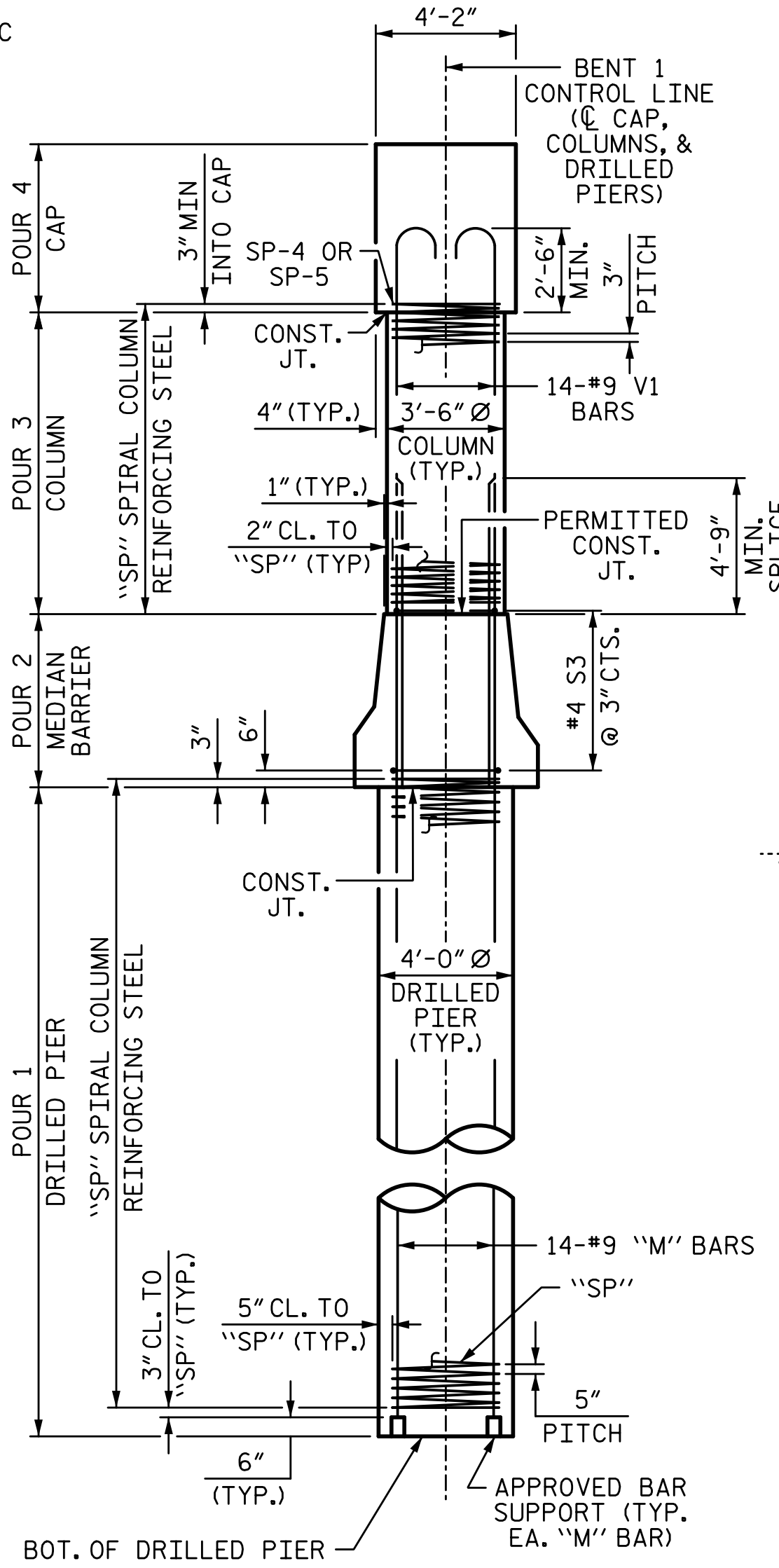
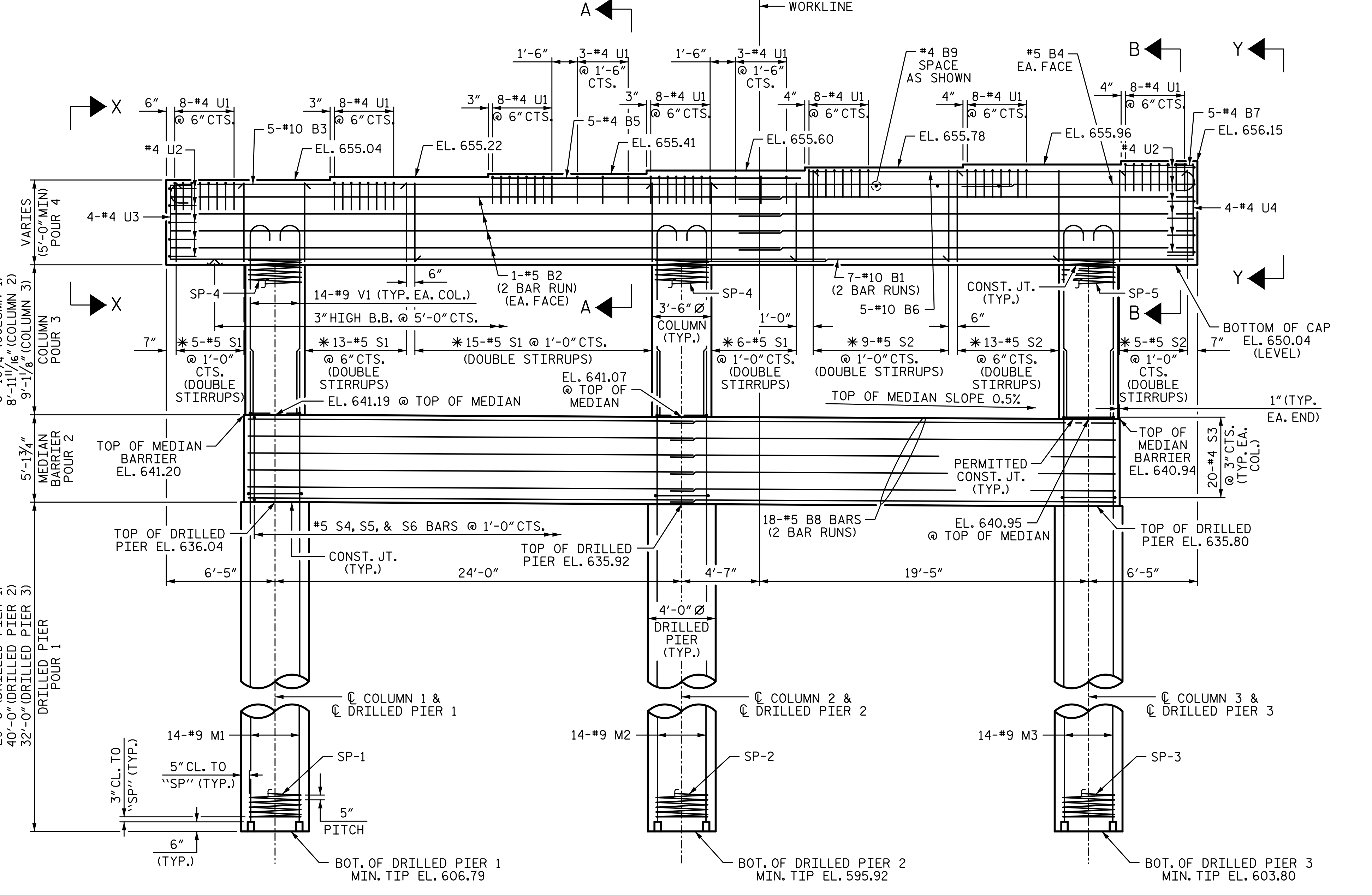
2/10/2017 9:09:08 AM G:\Projects\2014\U-3109A\Structures\Site 1-Bridge 434 (NBL)\Drawings\Final\401\_U3109A\_SMU\_BT1.dgn



SPLICE CHART	
#10 B1 SPLICE LENGTH =	7'-11"
#5 B2 SPLICE LENGTH =	3'-0"
#10 B3 SPLICE LENGTH =	13'-0"
#5 B4 SPLICE LENGTH =	3'-0"
#5 B8 SPLICE LENGTH =	3'-0"

**NOTES:**

- \* INVERT ALTERNATE STIRRUPS.
- STIRRUPS AND "U" BARS IN CAP MAY BE SHIFTED AS NECESSARY TO CLEAR ANCHOR BOLTS.
- HOOKS ON "V" BARS MAY BE TURNED AS NECESSARY FOR PLACING REINFORCING STEEL.
- ALL STEEL IN THE DRILLED PIERS IS INCLUDED IN THE PAY ITEMS FOR "REINFORCING STEEL" AND "SPIRAL COLUMN REINFORCING STEEL".
- THE LOCATION OF THE CONSTRUCTION JOINT IN THE DRILLED PIERS IS BASED ON THE APPROXIMATE PAVED SHOULDER ELEVATION. THE TOP OF DRILLED PIER SHALL BE ADJUSTED AS REQUIRED TO MAINTAIN THE TOP OF THE DRILLED PIER 1 FOOT BELOW THE PAVED SHOULDER ELEVATION.
- THE CONTRACTOR'S ATTENTION IS CALLED TO THE FACT THAT THE LONGITUDINAL REINFORCEMENT FOR THE DRILLED PIERS IS DETAILED WITH 3 FEET OF EXTRA LENGTH.



**DETAIL "A"**  
TYP. EA. GIRDER

PROJECT NO. U-3109A  
ALAMANCE COUNTY  
 STATION: 26+54.73 -NBL-

SHEET 1 OF 2

STATE OF NORTH CAROLINA DEPARTMENT OF TRANSPORTATION RALEIGH SUBSTRUCTURE					
<b>BENT 1</b>					
SHEET NO. S01-37					
TOTAL SHEETS S01-49					
REVISIONS					
NO.	BY:	DATE:	NO.	BY:	DATE:
1			3		
2			4		

DRAWN BY: S. D. COOPER DATE: 5-15  
 CHECKED BY: B.S. COX DATE: 5-15  
 DESIGN ENGINEER OF RECORD: T.J. BEACH DATE: 5-15

PLANS PREPARED BY:  
**SIMPSON & ASSOCIATES**  
 5640 Dillard Drive  
 Suite 200  
 Cary, NC 27518  
 (919) 852-0468  
 (919) 852-0598 (Fax)  
 www.simpsonengr.com  
 LICENSURE NO. C-2521



**ELEVATION**

**END ELEVATION**