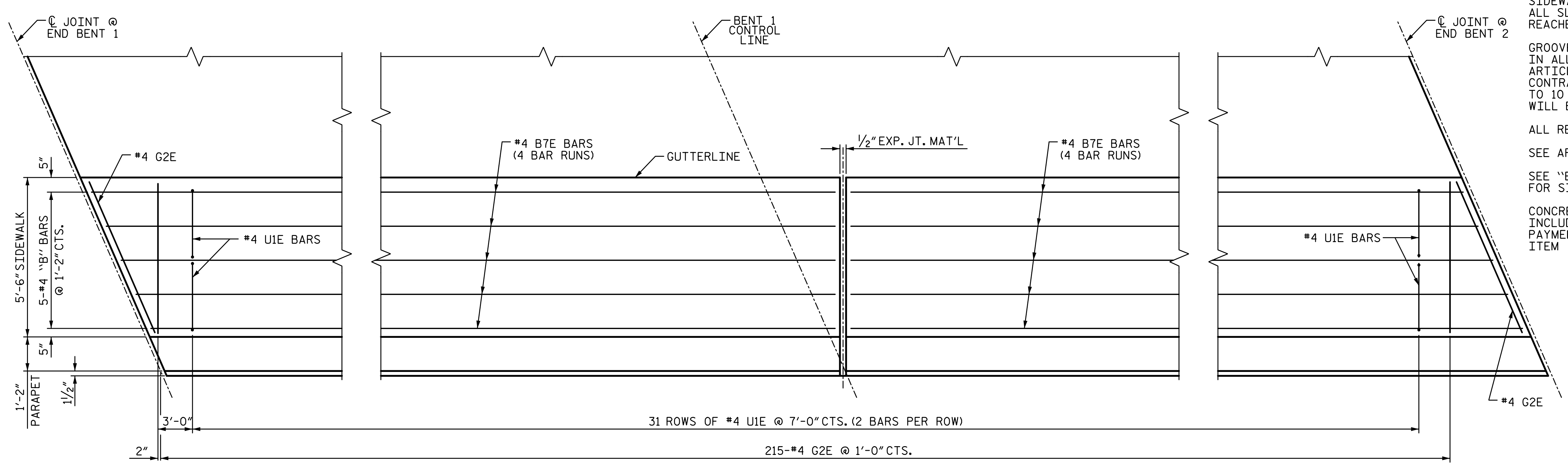


2/10/2017 9:09:04 AM G:\Projects\2014\U-3109A\Structures\Site 1-Bridge 434 (NBL)\Drawings\Final\401_U3109A_SMU_SW.dgn

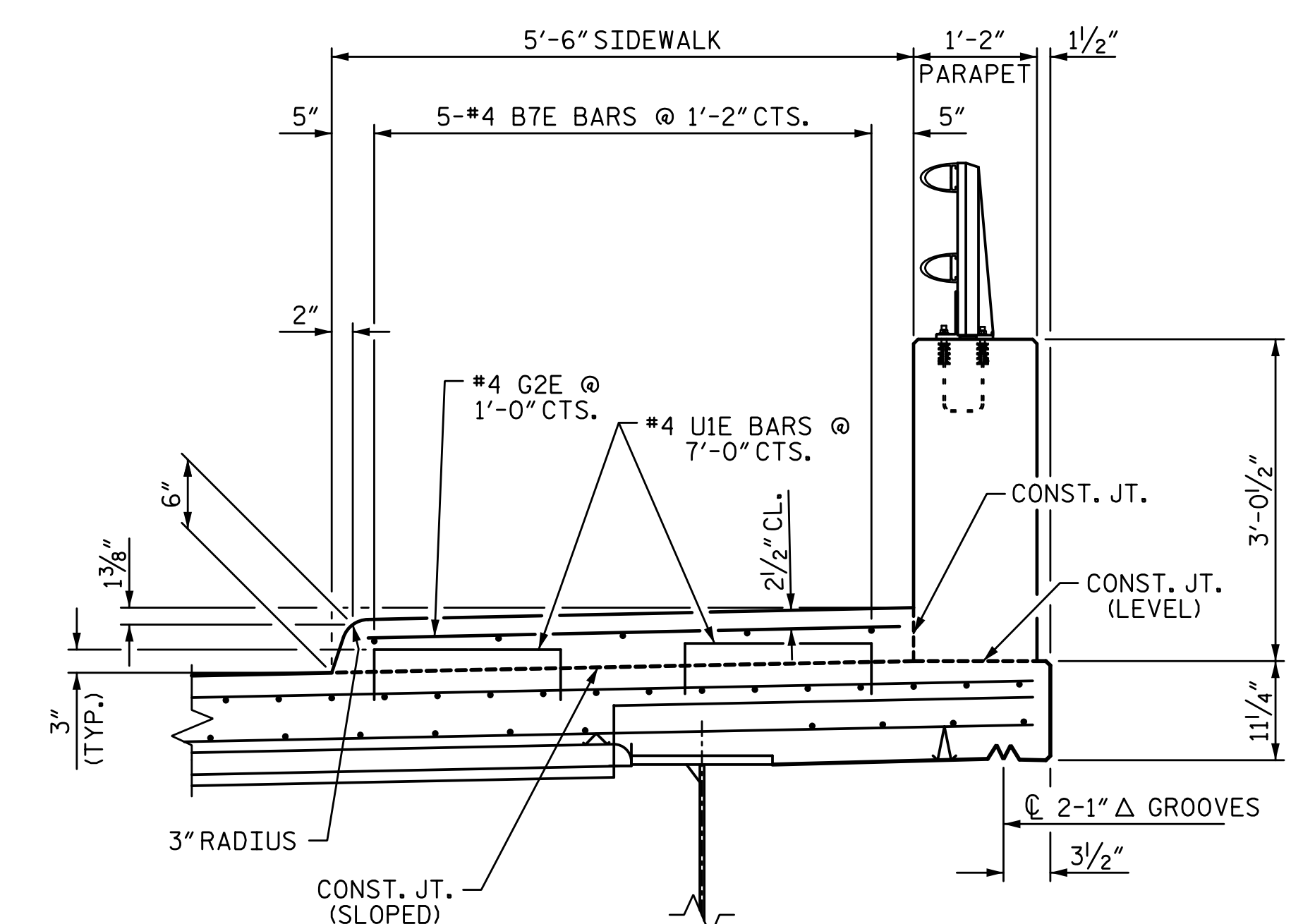


SPAN A

SPAN B

PLAN OF SIDEWALK

DIMENSIONS ARE MEASURED ALONG
OUTSIDE FACE OF CONCRETE PARAPET



SECTION THRU SIDEWALK

NOTES:

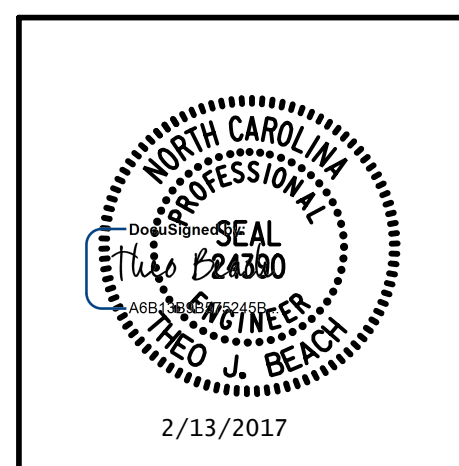
- THE #4U1E BARS MAY BE PUSHED INTO GREEN CONCRETE AFTER SPAN HAS BEEN SCREEDED OFF.
- SIDEWALK IN A CONTINUOUS UNIT SHALL NOT BE CAST UNTIL ALL SLAB CONCRETE IN THE UNIT HAS BEEN CAST AND HAS REACHED A MINIMUM COMPRESSIVE STRENGTH OF 3000 PSI.
- GROOVED CONTRACTION JOINTS, 1/2" IN DEPTH, SHALL BE TOOLED IN ALL EXPOSED FACES OF THE SIDEWALK IN ACCORDANCE WITH ARTICLE 825-10(B) OF THE STANDARD SPECIFICATIONS. THE CONTRACTION JOINTS SHALL BE LOCATED AT A SPACING OF 8 FT. TO 10 FT. BETWEEN EXPANSION JOINTS. NO CONTRACTION JOINT WILL BE REQUIRED FOR SEGMENTS LESS THAN 10 FT. IN LENGTH.
- ALL REINFORCING STEEL IN SIDEWALK SHALL BE EPOXY COATED.
- SEE APPROACH SLAB SHEETS FOR SIDEWALK ON APPROACH SLABS.
- SEE "EXPANSION JOINT SEAL DETAILS FOR SIDEWALK" SHEETS FOR SIDEWALK COVER PLATES AT END BENTS.
- CONCRETE AND REINFORCING STEEL FOR THE SIDEWALK IS INCLUDED IN THE SUPERSTRUCTURE BILL OF MATERIAL. PAYMENT FOR THE SIDEWALK SHALL BE INCLUDED IN THE PAY ITEM "REINFORCED CONCRETE DECK SLAB".

PROJECT NO. U-3109A
ALAMANCE COUNTY
STATION: 26+54.73 -NBL-

STATE OF NORTH CAROLINA
DEPARTMENT OF TRANSPORTATION
RALEIGH
SUPERSTRUCTURE
SIDEWALK DETAILS

DRAWN BY: S. D. COOPER DATE: 5-15
CHECKED BY: B.S. COX DATE: 5-15
DESIGN ENGINEER OF RECORD: T.J. BEACH DATE: 5-15

PLANS PREPARED BY:
SIMPSON ENGINEERS & ASSOCIATES
5640 Dillard Drive
Suite 200
Cary, NC 27518
(919) 852-0468
(919) 852-0598 (Fax)
www.simpsonengr.com
LICENSURE NO. C-2521



REVISIONS						SHEET NO.
NO.	BY:	DATE:	NO.	BY:	DATE:	TOTAL SHEETS
1			3			S01-21
2			4			S01-49