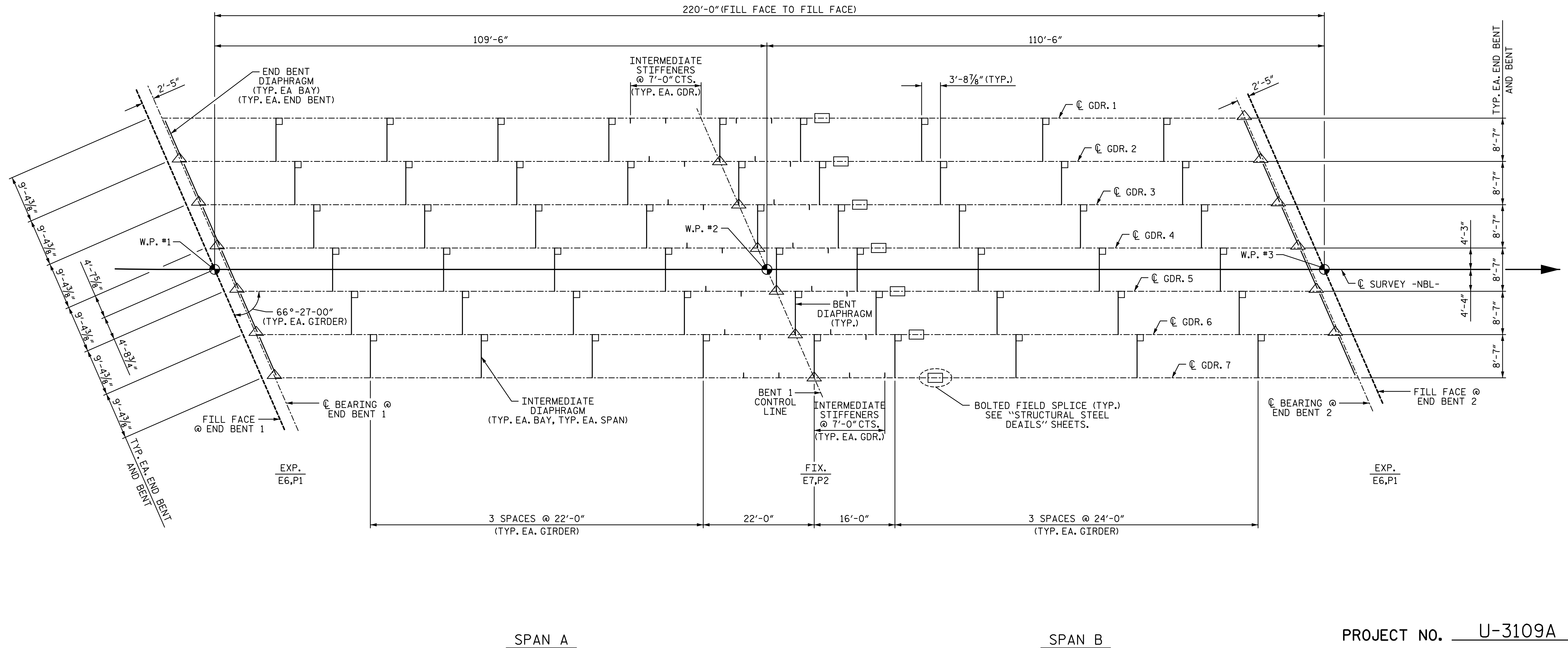


NOTES:

FOR DIAPHRAGM DETAILS, SEE "STRUCTURAL STEEL DETAILS" SHEETS.

FOR ELASTOMERIC BEARINGS, SEE "ELASTOMERIC BEARING DETAILS" SHEET.

△ THE BEARING STIFFENERS AT THESE LOCATIONS SHALL BE UTILIZED AS A CONNECTOR PLATE FOR THE DIAPHRAGM.



FRAMING PLAN

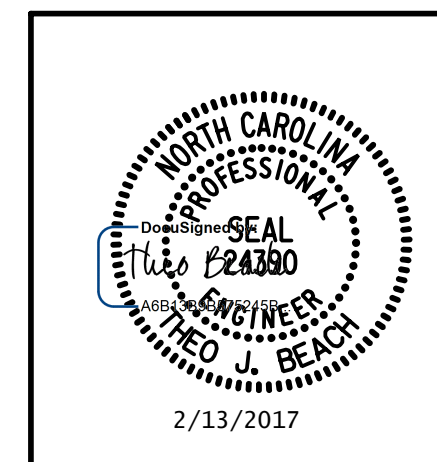
PROJECT NO. U-3109A  
ALAMANCE COUNTY  
 STATION: 26+54.73 -NBL-

2/10/2017 9:09:01 AM G:\Projects\2014\U-3109A\Structures\Site 1-Bridge 434 (NBL)\Drawings\Final\401\_U3109A\_SMU\_CL.dgn

DRAWN BY: S. D. COOPER DATE: 5-15  
 CHECKED BY: B.S. COX DATE: 5-15  
 DESIGN ENGINEER OF RECORD: T.J. BEACH DATE: 5-15

PLANS PREPARED BY:

**SIMPSON**  
**ENGINEERS**  
**& ASSOCIATES**  
 5640 Dillard Drive  
 Suite 200  
 Cary, NC 27518  
 (919) 852-0468  
 (919) 852-0598 (Fax)  
 www.simpsonengr.com  
 LICENSURE NO. C-2521



STATE OF NORTH CAROLINA  
 DEPARTMENT OF TRANSPORTATION  
 RALEIGH  
 SUPERSTRUCTURE

FRAMING PLAN

REVISIONS					
NO.	BY:	DATE:	NO.	BY:	DATE:
1			3		
2			4		

SHEET NO. S01-11  
 TOTAL SHEETS S01-49