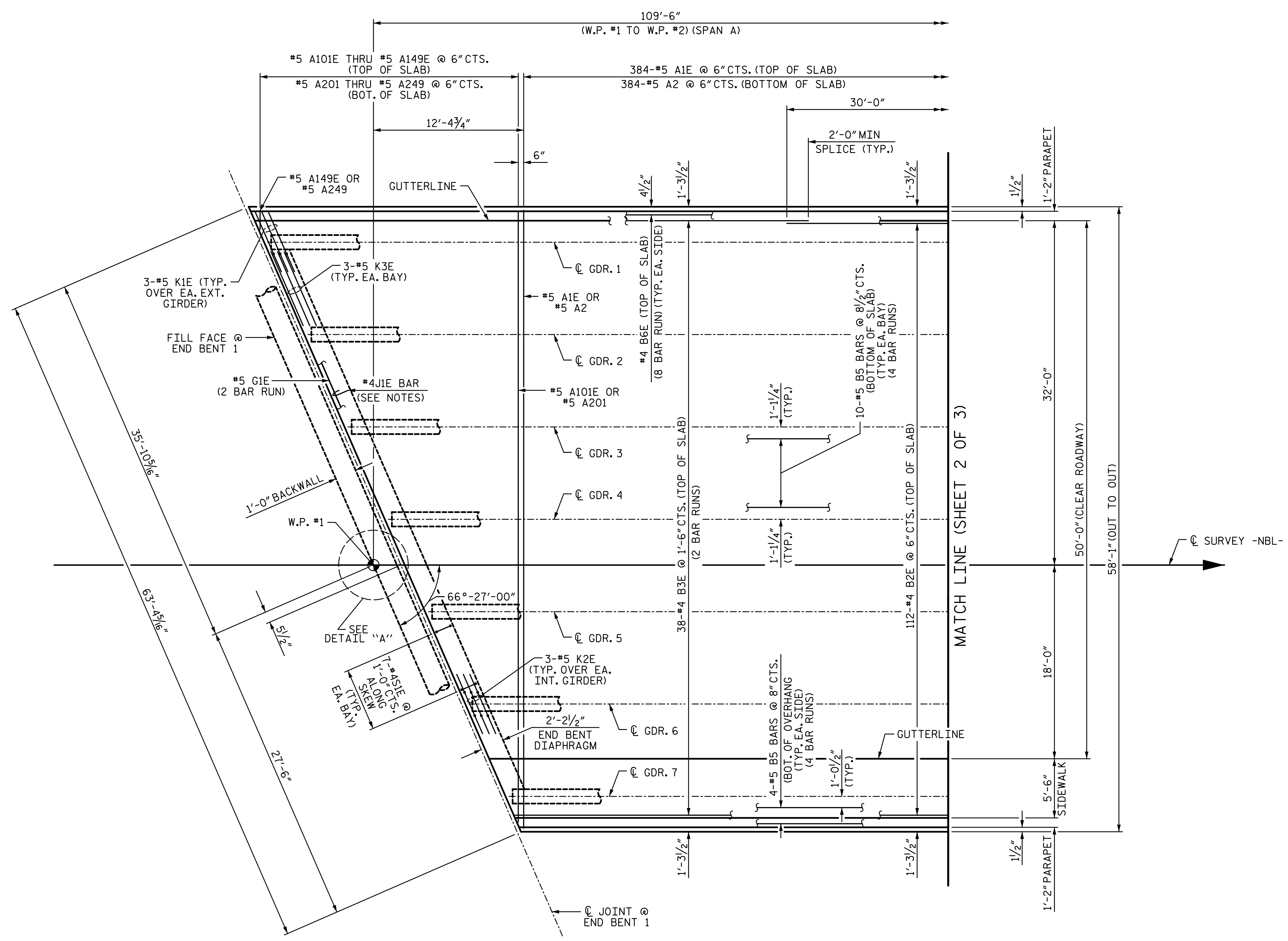


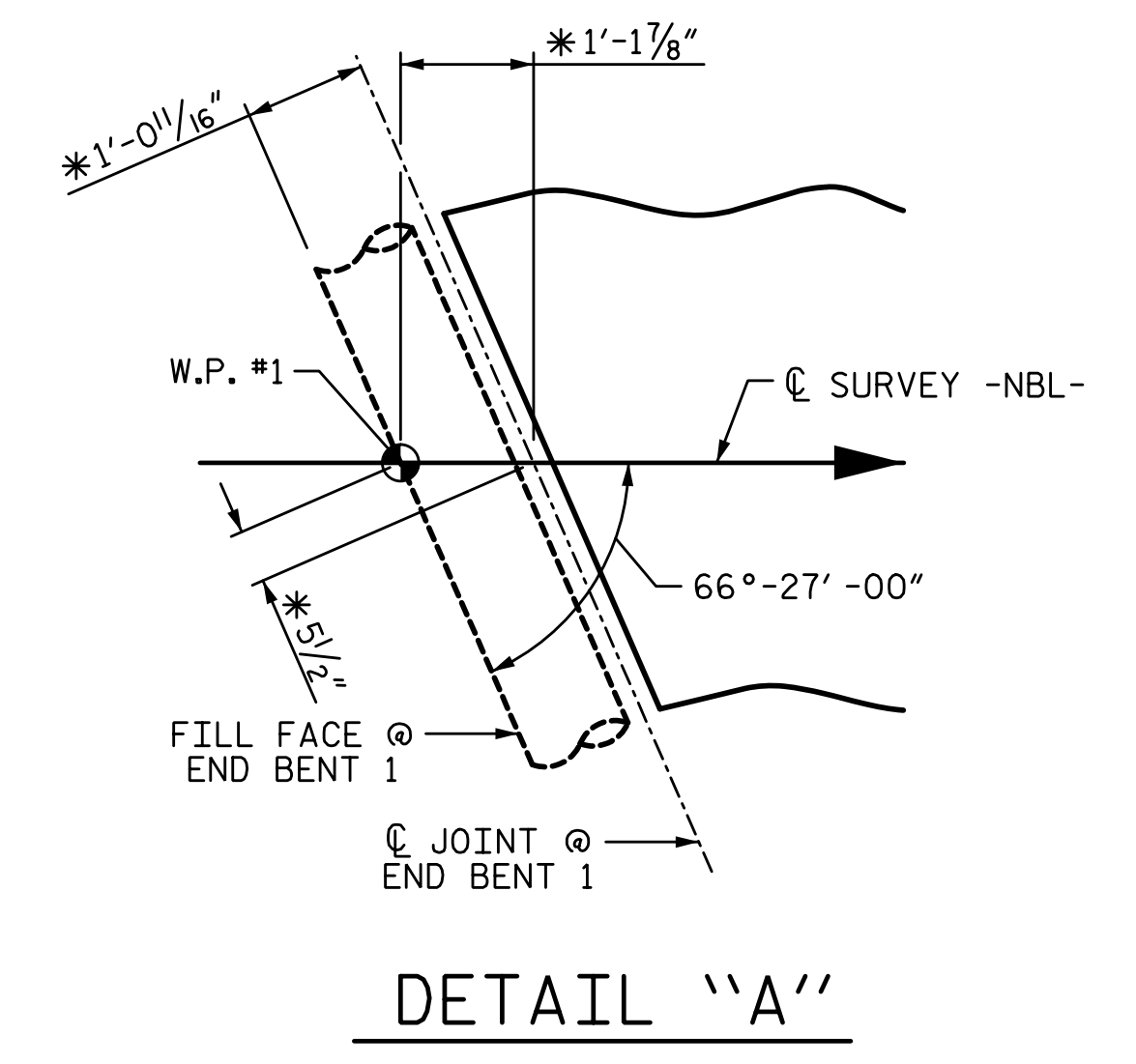
2/10/2017 9:09:00 AM G:\Projects\2014\U-3109A\Structures\Site 1-Bridge 434 (NBL)\Drawings\Final\401_U3109A_SMU_PS.dgn



PARTIAL PLAN - SPAN A

NOTES:

- FOR PARAPET REINFORCING STEEL, SEE "CONCRETE PARAPET DETAILS" SHEETS.
- FOR SIDEWALK REINFORCING STEEL, SEE "SIDEWALK DETAILS" SHEET.
- FOR PLACEMENT OF #4J1E BARS, SEE "EXPANSION JOINT SEAL DETAILS" SHEET.
- * JOINT OPENING AND OFFSETS BASED ON 60° JOINT OPENING.



PROJECT NO. U-3109A
ALAMANCE COUNTY
 STATION: 26+54.73 -NBL-

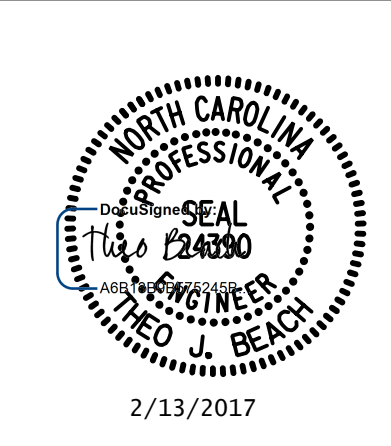
SHEET 1 OF 3

STATE OF NORTH CAROLINA
 DEPARTMENT OF TRANSPORTATION
 RALEIGH
 SUPERSTRUCTURE

PLAN OF SPANS
 (2 SPAN CONTINUOUS UNIT)
 (SPAN A)

DRAWN BY: <u>S. D. COOPER</u>	DATE: <u>5-15</u>
CHECKED BY: <u>B.S. COX</u>	DATE: <u>5-15</u>
DESIGN ENGINEER OF RECORD: <u>T.J. BEACH</u>	DATE: <u>5-15</u>

PLANS PREPARED BY:
SIMPSON ENGINEERS & ASSOCIATES
 5640 Dillard Drive
 Suite 200
 Cary, NC 27518
 (919) 852-0468
 (919) 852-0598 (Fax)
 www.simpsonengr.com
 LICENSURE NO. C-2521



REVISIONS						SHEET NO. S01-8
NO.	BY:	DATE:	NO.	BY:	DATE:	
1			3			TOTAL SHEETS S01-49
2			4			