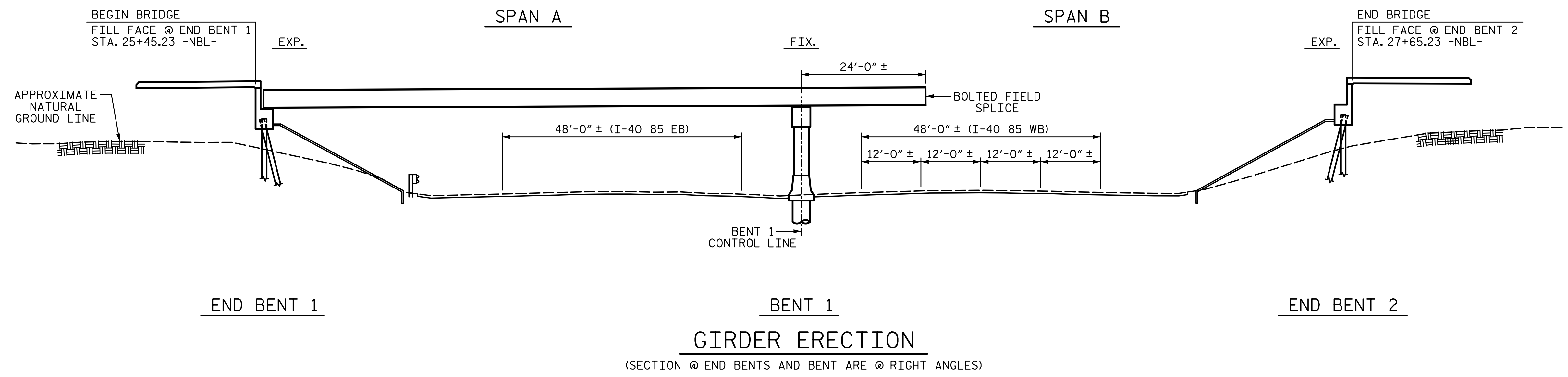


2/10/2017 9:08:59 AM G:\Projects\2014\U-3109A\Structures\Site 1-Bridge 434 (NBL)\Drawings\Final\401_U3109A_SMU_ERECT.dgn



GIRDER ERECTION
(SECTION @ END BENTS AND BENT ARE @ RIGHT ANGLES)

ERECTION NOTES:

ERECT A MINIMUM OF TWO GIRDERS WITH ALL DIAPHRAGMS BETWEEN THE GIRDERS IN PLACE AND THE BOLTS TIGHTENED PRIOR TO RELEASING THE GIRDERS.

ERECT EACH SUBSEQUENT GIRDER WITH DIAPHRAGM CONNECTING TO THE ADJACENT PREVIOUSLY ERECTED GIRDER AND TIGHTEN ALL BOLTS BEFORE RELEASING THE GIRDER.

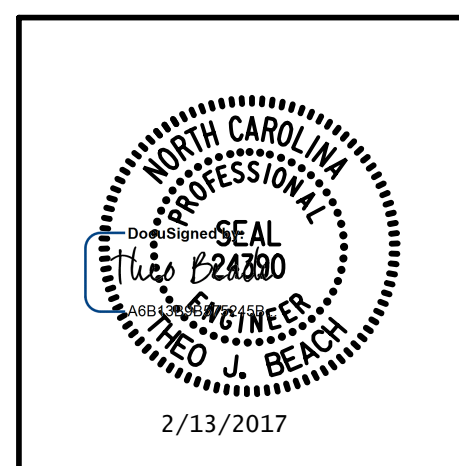
DURING THE GIRDER ERECTION PROCEDURE, THE CONTRACTOR IS RESPONSIBLE FOR PROVIDING TEMPORARY LATERAL BRACING AND OTHER MEANS OF SUPPORT AS REQUIRED TO ENSURE STABILITY OF THE GIRDERS AND TO ENSURE PLUMBNESS OF THE GIRDERS IN THE FINAL CONDITION.

THE CONTRACTOR MAY SUBMIT AN ALTERNATE ERECTION METHOD TO THE ENGINEER FOR REVIEW AND APPROVAL.

PROJECT NO. U-3109A
ALAMANCE COUNTY
 STATION: 26+54.73 -NBL-

DRAWN BY: <u>S. D. COOPER</u>	DATE: <u>5-15</u>
CHECKED BY: <u>B.S. COX</u>	DATE: <u>5-15</u>
DESIGN ENGINEER OF RECORD: <u>T.J. BEACH</u>	DATE: <u>5-15</u>

PLANS PREPARED BY:
SIMPSON ENGINEERS & ASSOCIATES
 5640 Dillard Drive
 Suite 200
 Cary, NC 27518
 (919) 852-0468
 (919) 852-0598 (Fax)
 www.simpsonengr.com
 LICENSURE NO. C-2521



STATE OF NORTH CAROLINA
 DEPARTMENT OF TRANSPORTATION
 RALEIGH
 SUPERSTRUCTURE

**GIRDER ERECTION
 DETAILS**

REVISIONS						SHEET NO.
NO.	BY:	DATE:	NO.	BY:	DATE:	S01-5
1			3			TOTAL SHEETS
2			4			S01-49