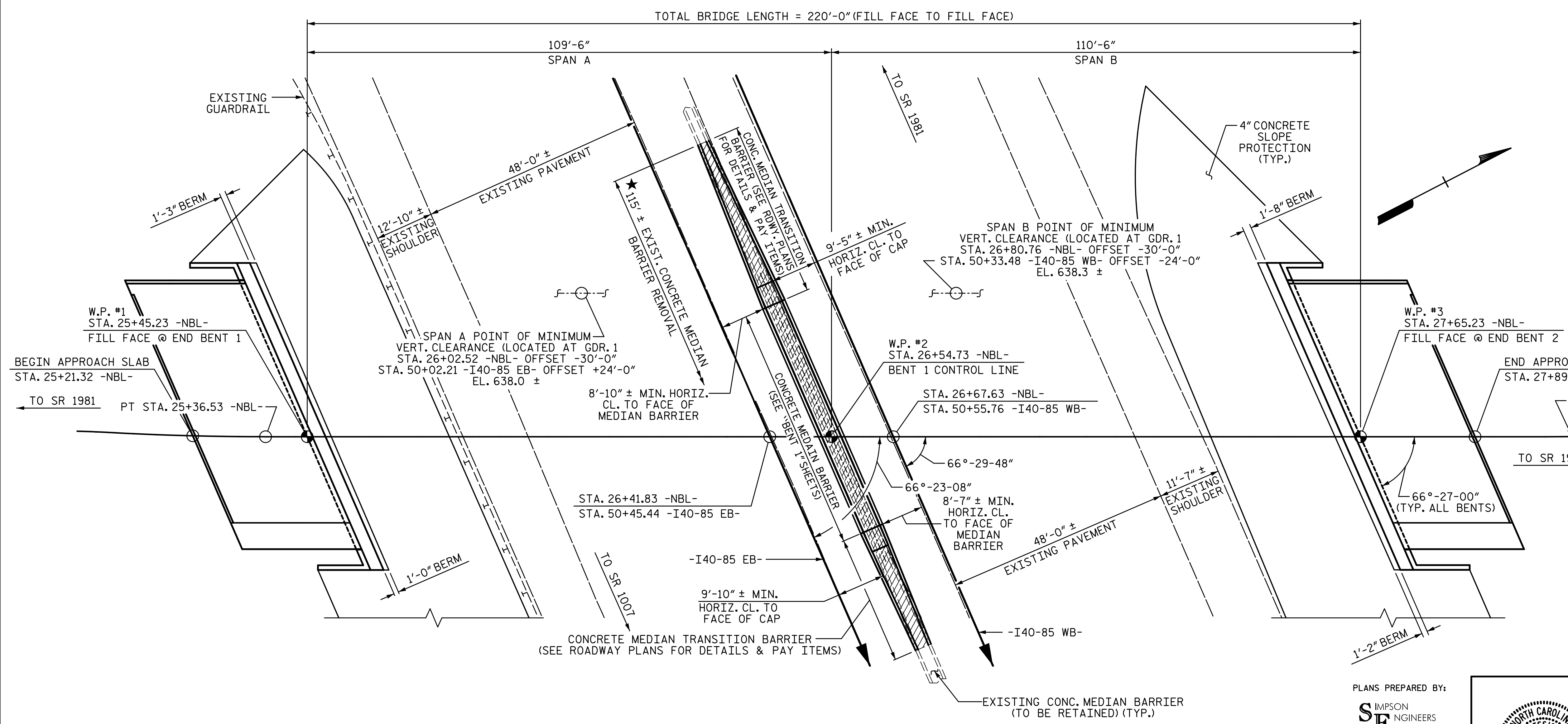


GRADE DATA -NBL-

(+)1.9200% (-)2.5090%

PVI STA. 27+75.00
EL. = 665.29
VC = 850'

★ EXISTING CONCRETE MEDIAN BARRIER TO BE REMOVED (ROADWAY PAY ITEM)



HORIZONTAL CURVE DATA

PI STA. 25+20.15 -NBL-
Δ = 3°-07'-48.6" (L.T.)
D = 9°-32'-57.5"
L = 32.78'
T = 16.39'
R = 600.00'

PROJECT NO. U-3109A
ALAMANCE COUNTY
STATION: 26+54.73 -NBL-

SHEET 1 OF 3 BRIDGE #434

STATE OF NORTH CAROLINA
DEPARTMENT OF TRANSPORTATION
RALEIGH

GENERAL DRAWING

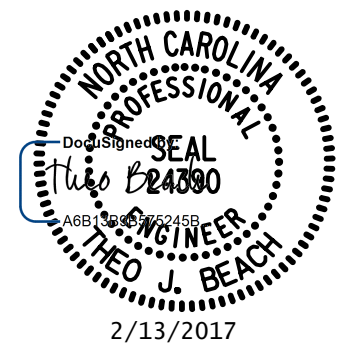
FOR NBL BRIDGE ON NC 119
OVER I40-85 WB AND I40-85 EB
BETWEEN SR 1981 AND SR 1980

REVISIONS					
NO.	BY:	DATE:	NO.	BY:	DATE:
1			3		
2			4		

SHEET NO. S01-1
TOTAL SHEETS S01-49

DRAWN BY: S. D. COOPER DATE: 5-15
CHECKED BY: B.S. COX DATE: 5-15
DESIGN ENGINEER OF RECORD: T.J. BEACH DATE: 5-15

PLANS PREPARED BY:
SIMPSON ENGINEERS & ASSOCIATES
5640 Dillard Drive
Suite 200
Cary, NC 27518
(919) 852-0468
(919) 852-0598 (Fax)
www.simpsonengr.com
LICENSURE NO. C-2521



2/10/2017 9:14:40 AM G:\Projects\2014\U-3109A\Structures\Site 1-Bridge 434 (NBL)\Drawings\Final\401_U3109A_SMU_CD.dgn