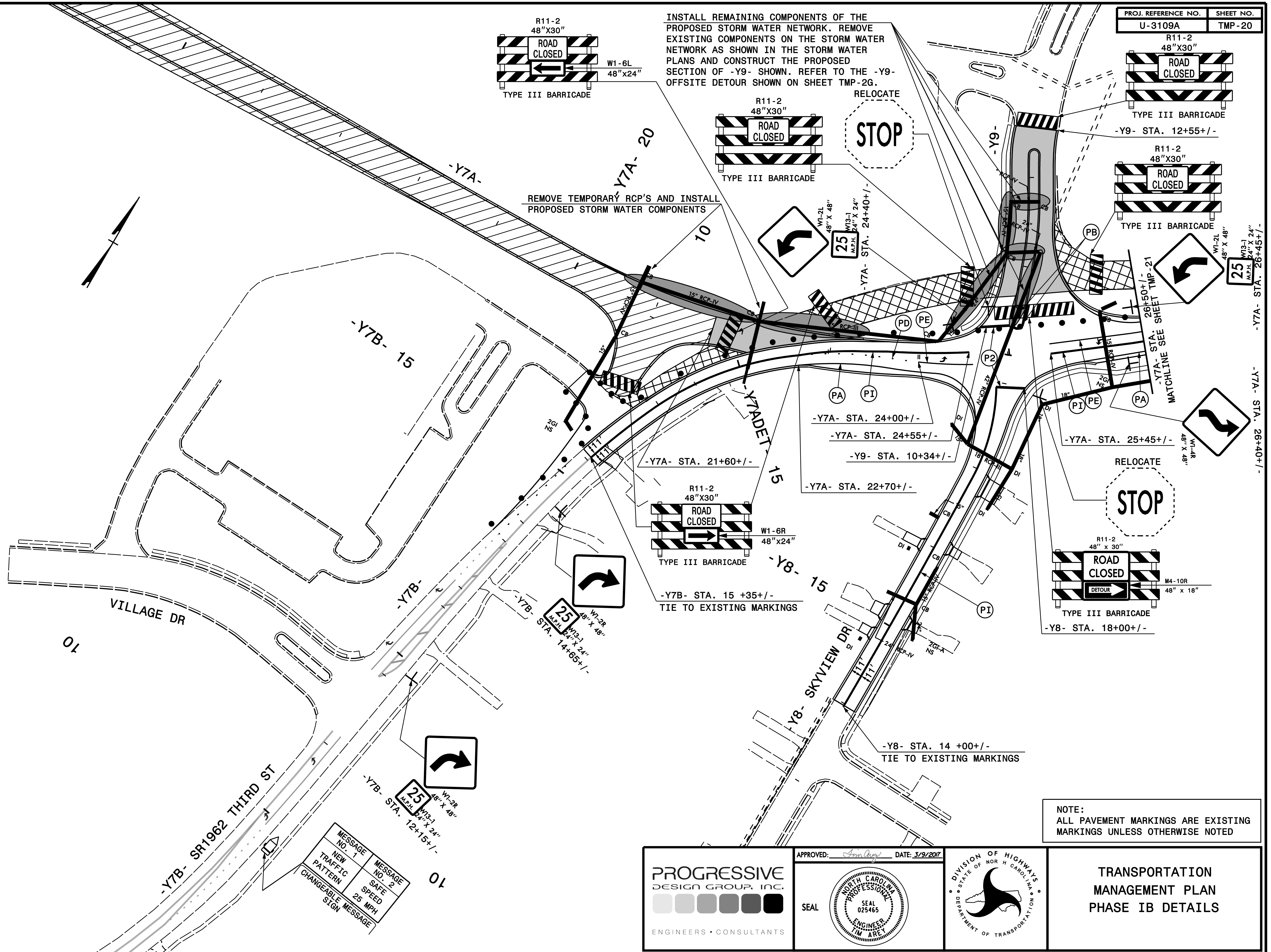
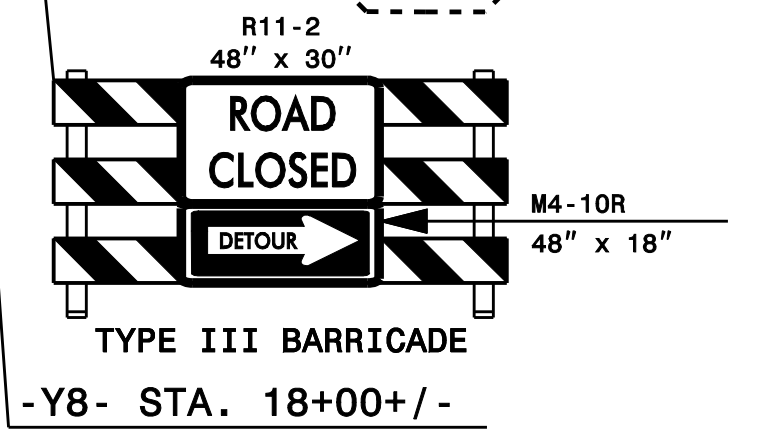
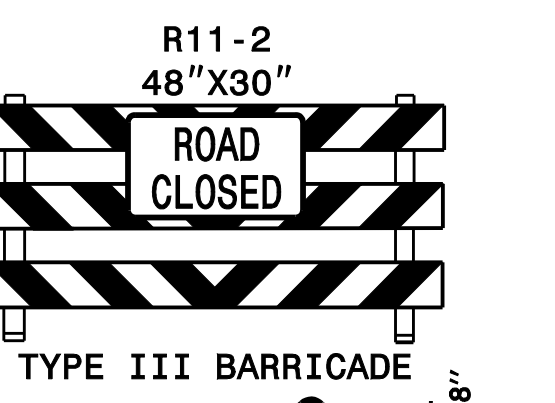
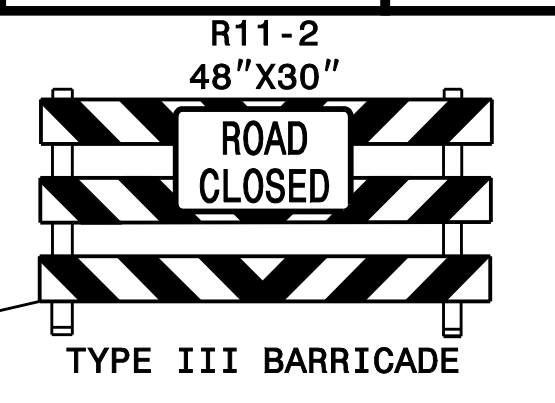
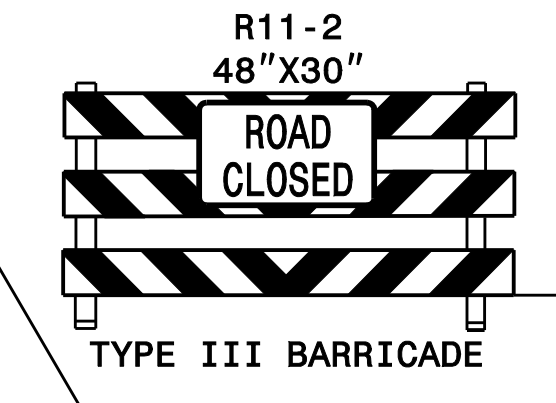
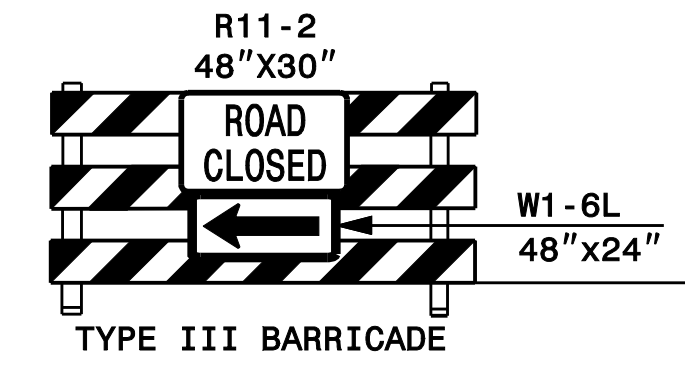


INSTALL REMAINING COMPONENTS OF THE PROPOSED STORM WATER NETWORK. REMOVE EXISTING COMPONENTS ON THE STORM WATER NETWORK AS SHOWN IN THE STORM WATER PLANS AND CONSTRUCT THE PROPOSED SECTION OF -Y9- SHOWN. REFER TO THE -Y9-OFFSITE DETOUR SHOWN ON SHEET TMP-2G.



REMOVE TEMPORARY RCP'S AND INSTALL PROPOSED STORM WATER COMPONENTS

-Y7A- STA. 24+00+/-
 -Y7A- STA. 24+55+/-
 -Y7A- STA. 22+70+/-
 -Y9- STA. 10+34+/-

-Y7A- STA. 21+60+/-
 -Y7B- STA. 15+35+/-
 TIE TO EXISTING MARKINGS

-Y7A- STA. 25+45+/-
 -Y8- STA. 18+00+/-
 -Y8- STA. 14+00+/-
 TIE TO EXISTING MARKINGS

MESSAGE NO. 1
 NEW TRAFFIC PATTERN
 CHANGEABLE MESSAGE SIGN

MESSAGE NO. 2
 SAFE SPEED
 25 MPH

NOTE:
 ALL PAVEMENT MARKINGS ARE EXISTING MARKINGS UNLESS OTHERWISE NOTED

PROGRESSIVE
 DESIGN GROUP, INC.
 ENGINEERS • CONSULTANTS

APPROVED: *[Signature]* DATE: 3/9/2017
 SEAL
 NORTH CAROLINA PROFESSIONAL ENGINEER
 SEAL 025465



TRANSPORTATION
 MANAGEMENT PLAN
 PHASE IB DETAILS